

LOCATION PLAN 1:2000

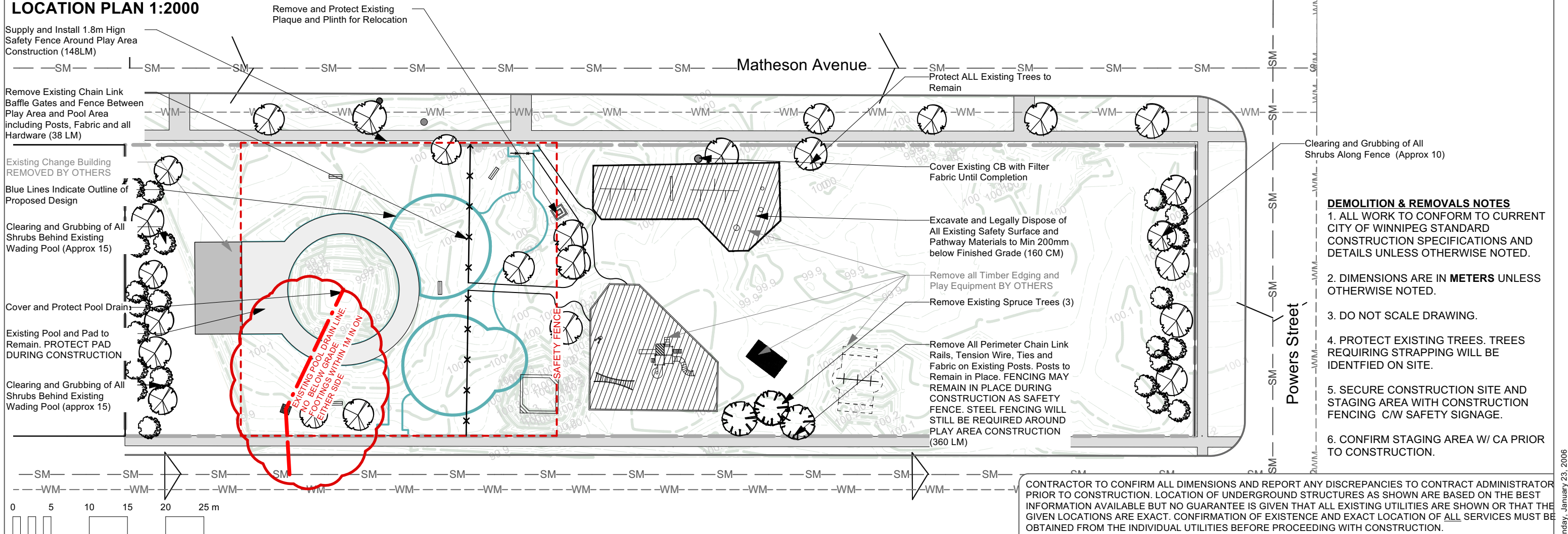


Proposed Tree (BY OTHERS)

**FAITH ACADEMY
ELEMENTARY**



EXISTING MONUMENT TO BE MOVED



- DEMOLITION & REMOVALS NOTES**
1. ALL WORK TO CONFORM TO CURRENT CITY OF WINNIPEG STANDARD CONSTRUCTION SPECIFICATIONS AND DETAILS UNLESS OTHERWISE NOTED.
 2. DIMENSIONS ARE IN METERS UNLESS OTHERWISE NOTED.
 3. DO NOT SCALE DRAWING.
 4. PROTECT EXISTING TREES. TREES REQUIRING STRAPPING WILL BE IDENTIFIED ON SITE.
 5. SECURE CONSTRUCTION SITE AND STAGING AREA WITH CONSTRUCTION FENCING C/W SAFETY SIGNAGE.
 6. CONFIRM STAGING AREA W/ CA PRIOR TO CONSTRUCTION.

CONTRACTOR TO CONFIRM ALL DIMENSIONS AND REPORT ANY DISCREPANCIES TO CONTRACT ADMINISTRATOR PRIOR TO CONSTRUCTION. LOCATION OF UNDERGROUND STRUCTURES AS SHOWN ARE BASED ON THE BEST INFORMATION AVAILABLE BUT NO GUARANTEE IS GIVEN THAT ALL EXISTING UTILITIES ARE SHOWN OR THAT THE GIVEN LOCATIONS ARE EXACT. CONFIRMATION OF EXISTENCE AND EXACT LOCATION OF ALL SERVICES MUST BE OBTAINED FROM THE INDIVIDUAL UTILITIES BEFORE PROCEEDING WITH CONSTRUCTION.

<p>THE CITY OF WINNIPEG Planning, Property and Development Department Planning and Land Use Division Unit 15 - 30 Fort Street, Winnipeg, MB, (R3C 4X5)</p>	DESIGNED BY	CHECKED BY	MANAGER, PARK AND OPEN SPACES	DATE	DRAWING TITLE Clara Hughes Park Playground Redevelopment Existing Conditions and Removals	DRAWING NO. C.21- 1 R1	
	DRAWN BY IM	APPROVED BY					MANAGER, PLANNING AND LAND USE DIVISION
	HORIZ. SCALE 1:500		SITE ADDRESS 400 Matheson Avenue				
	VERT. SCALE			BID OPPORTUNITY NO. 310-2021			
DATE May 2021							