

CLIENT



CONTRACTOR

**FOR TENDER ONLY**  
 NOT TO BE USED FOR CONSTRUCTION

CONSULTANT



#	DATE	REVISION/ISSUANCE
10	01/28/22	ISSUED FOR TENDER 1
03/31/22		ISSUED FOR ADDENDUM #5

DATE ISSUED  
 MAR. 31, 2022

SEALS

f-BLOK architecture inc.

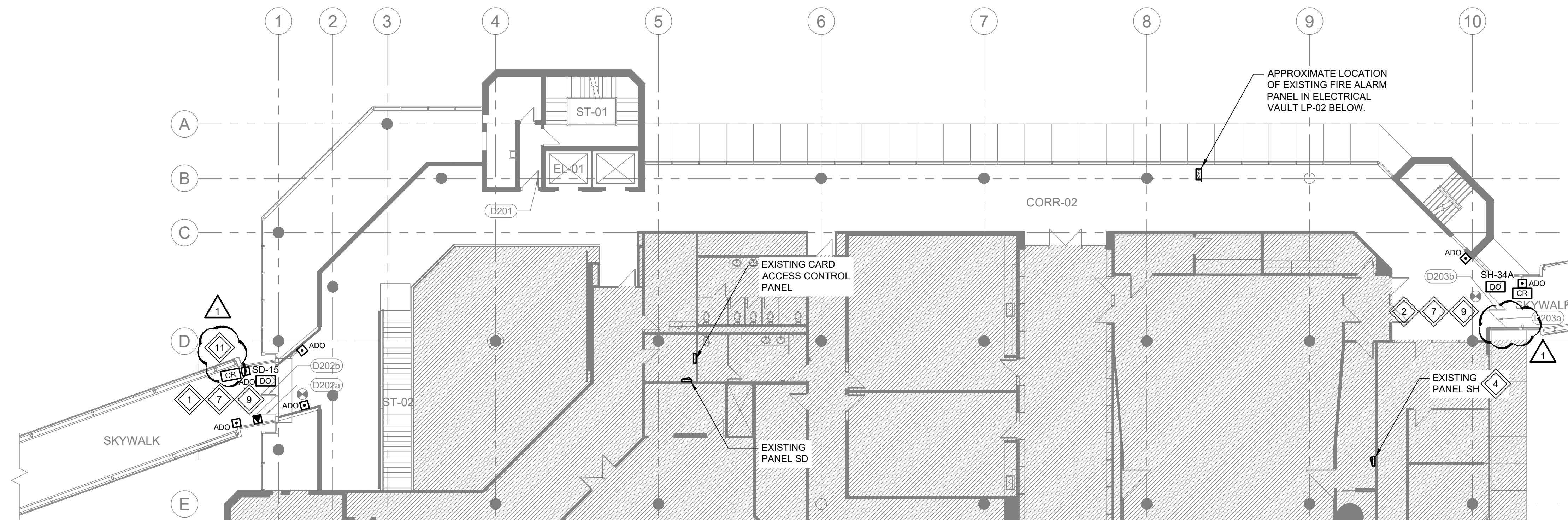
SHEET TITLE  
**ELECTRICAL FLOOR PLANS**

SHEET NUMBER

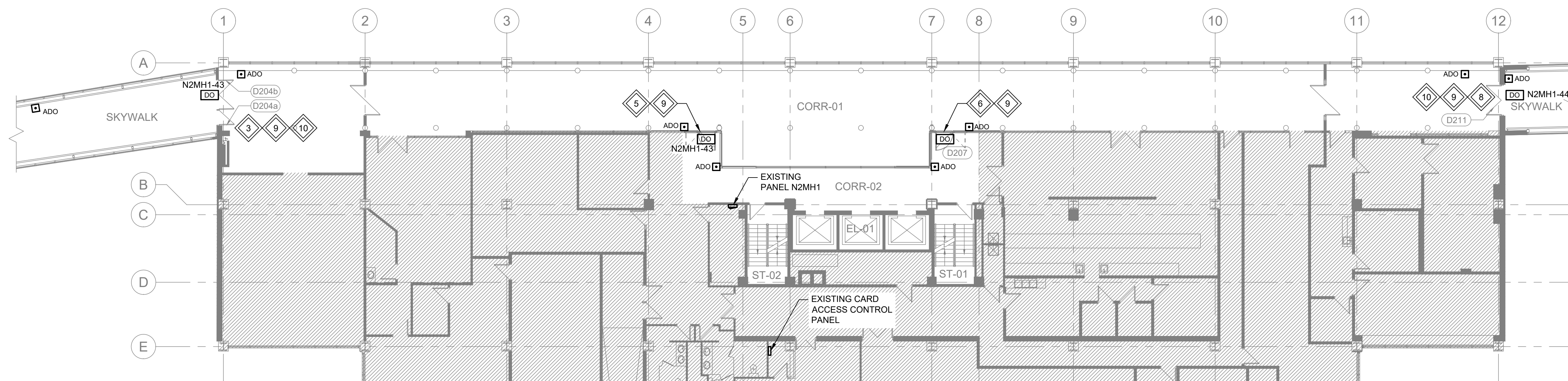
# E2.0

PROJECT #  
 21-3413-006

PROJECT NAME  
**WEATHER PROTECTED WALKWAY SYSTEM, ACCESSIBILITY UPGRADES GRAHAM AVE, WINNIPEG, MB**



**1 PARTIAL SECOND FLOOR PLAN (251 DONALD ST)**  
 SCALE: 1:150mm (24"x36")



**2 PARTIAL SECOND FLOOR PLAN (266 GRAHAM AVE)**  
 SCALE: 1:150mm (24"x36")

**GENERAL NOTES:**

- REFER TO ARCHITECTURAL DRAWINGS FOR ADDITIONAL DETAILS ON NEW DOOR DEVICES. PROVIDE CONDUIT AND WIRING TO ALL NEW ELECTRIFIED DEVICES. SOME ADO PUSHBUTTONS ARE WIRELESS.

**KEYNOTES:**

- DISCONNECT AND REMOVE EXISTING DOOR HOLD OPENS. REUSE ONE FOR DOOR D202a. CONNECT NEW ADO AND ALL RELATED PUSHBUTTONS AND DEVICES. PROVIDE A NEW 15A CIRCUIT FROM THE NEAREST POWER PANEL.
- DISCONNECT AND REMOVE ALL DOOR HOLD OPENS. RELOCATE THE EXISTING CARD READER TO THE NORTH COLUMN. CONNECT NEW ADO AND ALL RELATED PUSHBUTTONS AND DEVICES. PROVIDE A NEW 15A CIRCUIT FROM THE NEAREST POWER PANEL.
- DISCONNECT AND REMOVE ALL DOOR HOLD OPENS ON DOOR D204b. CONNECT NEW ADO AND ALL RELATED PUSHBUTTONS AND DEVICES. PROVIDE A NEW 15A CIRCUIT FROM THE NEAREST POWER PANEL.
- PROVIDE A NEW TANDEM BREAKER IN PANEL SH. PANEL IS A CUTLER HAMMER PL1A PANEL.
- CONNECT NEW ADO TO NEW POWER CIRCUIT. CONNECT ALL RELATED PUSHBUTTONS AND DEVICES. PROVIDE A NEW 15A CIRCUIT FROM THE NEAREST POWER PANEL.
- DISCONNECT AND REINSTALL EXISTING ADO COMPLETE WITH ALL RELATED PUSHBUTTONS AND DEVICES.
- PROVIDE TWO (2) NEW HONEYWELL PROFUSION 31955099 CMP PLENUM ACCESS CONTROL CABLE FROM THE DOOR TO THE NEAREST CARD ACCESS CONTROL PANEL. ENSURE THERE IS SUFFICIENT SLACK TO CONNECT FUTURE DEVICES. RUN NEW WIRING TO FUTURE CARD READER LOCATION.
- DISCONNECT AND REMOVE ALL DOOR HOLD OPENS. CONNECT NEW ADO AND ALL RELATED PUSHBUTTONS AND DEVICES. PROVIDE A NEW 15A CIRCUIT FROM THE NEAREST POWER PANEL.
- CONNECT EXISTING FIRE ALARM DOOR HOLD OPEN SIGNAL TO THE NEW ADO FIRE ALARM RELEASE INPUT.
- PROVIDE A NEW HONEYWELL PROFUSION 31955099 CMP PLENUM ACCESS CONTROL CABLE FROM THE DOOR TO THE NEAREST CARD ACCESS CONTROL PANEL. ENSURE THERE IS SUFFICIENT SLACK TO CONNECT FUTURE DEVICES. RUN NEW WIRING TO FUTURE CARD READER LOCATION.

11 PROVIDE A NEW CARD READER. CARD READER TO MATCH EXISTING CARD READER BY DOOR 203. HID MULTICLASS SE RP40. INSTALLATION TO BE BY THE CONTRACTOR. FINAL PROGRAMMING TO BE BY THE CITY OF WINNIPEG SECURITY GROUP.