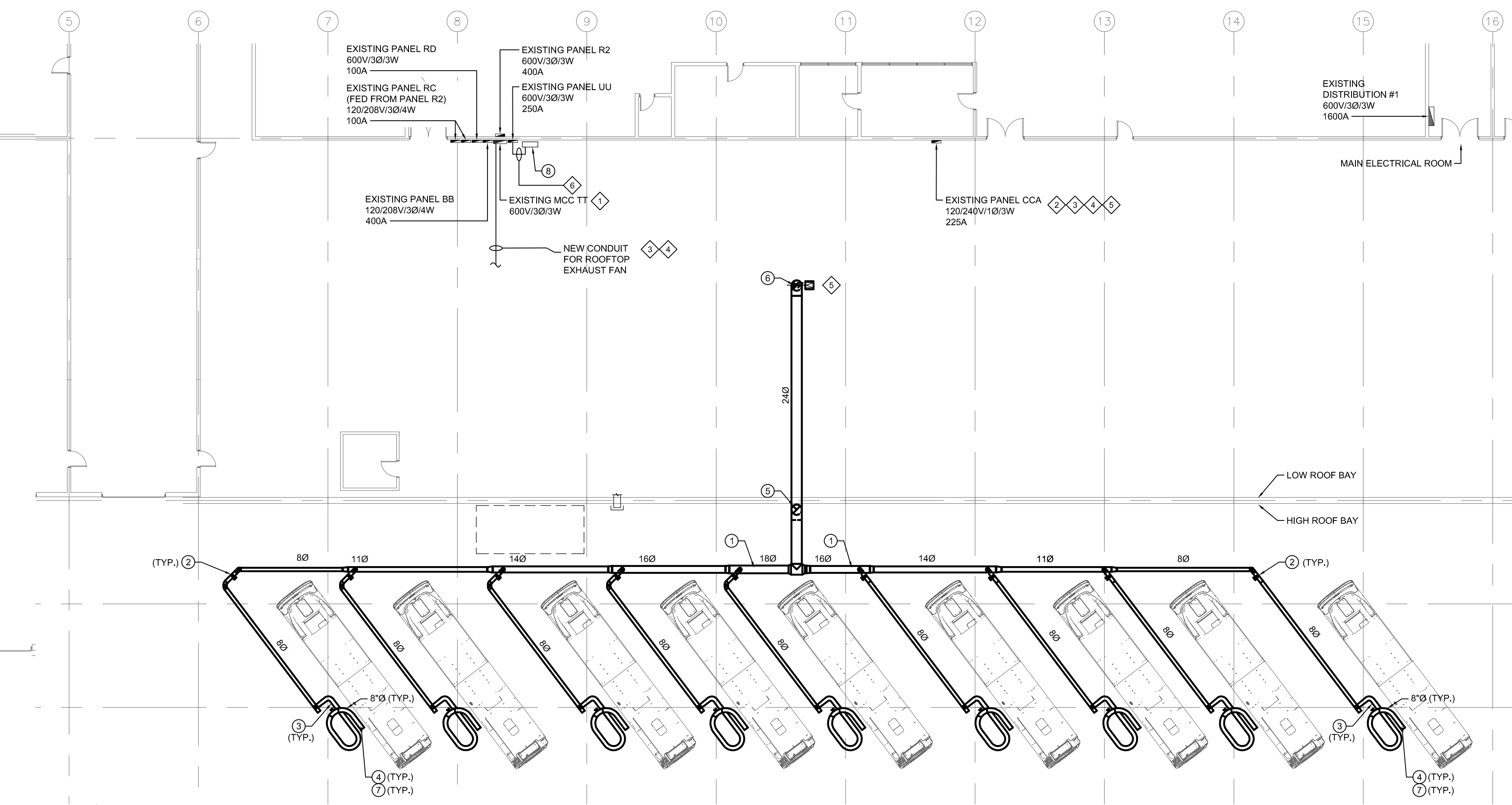


1 PARTIAL REPAIR GARAGE MAIN FLOOR PLAN - MECHANICAL AND ELECTRICAL - DEMOLITION
SCALE: 1/16"=1'-0"



2 PARTIAL REPAIR GARAGE MAIN FLOOR PLAN - MECHANICAL AND ELECTRICAL - NEW CONSTRUCTION
SCALE: 1/16"=1'-0"

GENERAL NOTES - MECHANICAL

- A. ALL ABANDONED EQUIPMENT AND SERVICES WITHIN AREA OF WORK SHALL BE REMOVED.
- B. THIS BUILDING MAY CONTAIN ASBESTOS. REFER TO FRONT END SPECIFICATIONS FOR FURTHER INFORMATION.
- C. PRIOR TO DEMOLISHING AND REMOVAL OF THE EXISTING EQUIPMENT, COORDINATE WITH THE CITY. RETURN EQUIPMENT TO THE CITY AS REQUESTED.

GENERAL NOTES - ELECTRICAL

- A. ALL EQUIPMENT, DEVICES, FIXTURES REMOVED UNDER DEMOLITION SCOPE WILL BE FIRST OFFERED TO THE CITY FOR REFUSAL, FOLLOWED BY CONTRACTOR AND FINALLY TO BE LEGALLY DISPOSED OF.
- B. FOR ALL EXISTING ELECTRICAL DEVICES, EQUIPMENT, ETC. THAT ARE REMOVED, REMOVE EXISTING CONDUIT, WIRING, ETC. BACK TO SOURCE.
- C. CONTRACTOR SHALL BE RESPONSIBLE FOR COORDINATING EXACT LAYOUT, ROUTING, ETC. VERIFY EXISTING SERVICES ON SITE.
- D. VERIFY ALL EXISTING EQUIPMENT BEING RE-USED IS WORKING PRIOR TO INSTALLATION. SUPPLY NEW EQUIPMENT AS NECESSARY.
- E. CONTRACTOR TO DETERMINE EXACT CABLE ROUTES ON SITE. WHERE POSSIBLE FOLLOW EXISTING CABLE ROUTES THROUGH BUILDING. RE-USE EXISTING OPENINGS AND PENETRATIONS TO ROUTE CABLES. PROVIDE NEW PENETRATIONS WHERE EXISTING CANNOT BE RE-USED. SEAL ALL PENETRATIONS.
- F. SEAL ALL PENETRATIONS THROUGH FIRE RATED WALLS WITH FIRE STOP MATERIAL AS REQUIRED TO MAINTAIN ASSEMBLY RATING.
- G. COORDINATE FULLY WITH MECHANICAL FOR THE SEQUENCE OF DEMOLITION AND CONSTRUCTION.
- H. COORDINATE WITH THE CITY PRIOR TO SHUT DOWN OF EQUIPMENT.
- I. DRAWINGS SHOW ONLY A GENERAL SCHEMATIC OF NEW AND SOME EXISTING SYSTEMS, ROUTING CONDUITS AND/OR CABLES AND LOCATIONS SHALL SUITE SITE CONDITIONS AND MAY HAVE TO BE CHANGED TO AVOID CONFLICT WITH EXISTING STRUCTURE AND SERVICES. WHEN A CONFLICT CANNOT BE AVOIDED, THE EXISTING SERVICES SHALL BE MODIFIED AS REQUIRED.
- J. PROVIDE LIQUID TIGHT CONNECTORS FOR ALL CONDUITS INSTALLED INSIDE GARAGE AND ON ROOF.

DEMOLITION KEY NOTES - #

- 1. EXISTING MAKE UP AIR UNIT IS SHOWN FOR REFERENCE.
- 2. EXISTING JOHNSON CONTROLS METASYS PANEL TO REMAIN.
- 3. EXISTING DUCT TO BE COMPLETELY REMOVED UP TO SIDEWALL PENETRATION THROUGH WALL BETWEEN LOW AND HIGH BAY ROOF. ABANDON DUCT THROUGH WALL AND CAP OFF AND INSULATE TO PROVIDE INSULATED AND SEALED PENETRATION.
- 4. REFER TO ME2.1 FOR CONTINUATION.

DEMOLITION KEY NOTES - @

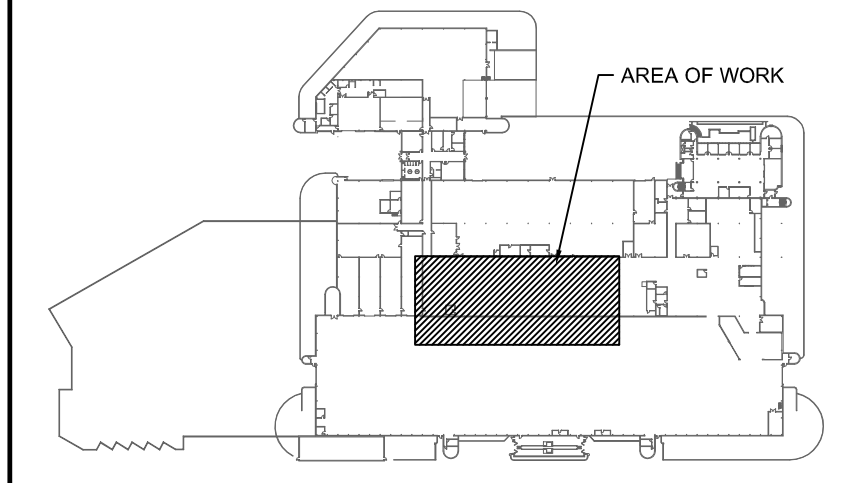
- 1. DISCONNECT AND REMOVE EXISTING BREAKER, STARTER, WIRE, CONDUIT, ETC. FROM MCC-TT NO LONGER REQUIRED FOR EXHAUST FAN EF-25.

KEY NOTES - MECHANICAL @

- 1. PROVIDE NEW DUCTWORK, COORDINATE DUCTWORK LOCATION ON SITE WITH FACILITY MANAGEMENT AND SITE CONDITIONS.
- 2. PROVIDE NEW BLAST GATE IN DUCTWORK, BLAST GATE SHALL BE FULL COLLAR, CAST ALUMINUM WITH GALVANIZED SIDES.
- 3. PROVIDE NEW FLEXIBLE HIGH TEMP HOSE AND CONNECT TO DUCTWORK.
- 4. LEAVE EXTRACTION HOSE OPEN ENDED, CUSTOM NOZZLE/CANOPY FABRICATED AND INSTALLED BY CITY. THE NOZZLE/CANOPY WEIGHT IS APPROXIMATELY 6 LBS.
- 5. EXHAUST DUCTWORK DOWN TO LOW ROOF BAY.
- 6. EXHAUST DUCTWORK UP TO ROOF. REFER TO DETAILS.
- 7. BALANCE EXHAUST TO BE 700 CFM AT EACH INLET.
- 8. NEW EXHAUST FANS TO BE SCHEDULED WITH JOHNSON CONTROLS METASYS SYSTEM.

KEY NOTES - ELECTRICAL @

- 1. PROVIDE ONE NEW 20A-3P 600V BREAKER/STARTER FOR NEW EXHAUST FAN IN MCC-TT. MODIFY COMPARTMENT TO ACCOMMODATE BREAKER. UTILIZE SPARE COMPARTMENT AS REQUIRED. BREAKER TO MATCH EXISTING IN ALL RESPECTS. CONNECT TO NEW EXHAUST FAN FEEDERS. ARRANGE AND PAY FOR CSA RECERTIFICATION ONCE INSTALLATION IS COMPLETE.
- 2. PROVIDE NEW BREAKER FOR MOTORIZED DAMPER AND ROOFTOP RECEPTACLE CIRCUIT. BREAKERS TO MATCH EXISTING IN ALL RESPECTS.
- 3. NEW FEEDERS/CONDUIT FOR ROOF TOP EQUIPMENT TO PENETRATE ROOF THROUGH NEW PITCH BOX. CONFIRM EXACT ROUTING ON SITE. SEAL ALL PENETRATIONS AND MAKE WEATHER-TIGHT. REFER TO DETAIL 5 ON DRAWING ME.1 FOR FURTHER INFORMATION.
- 4. CONTRACTOR TO CONFIRM EXACT ROUTING TO ROOF ON SITE.
- 5. WIRE AND CONNECT NEW MOTORIZED DAMPER PROVIDED BY MECHANICAL. CONNECT NEW DAMPER TO A NEW DEDICATED 15A 120V CIRCUIT FROM PANEL CCA. COORDINATE INSTALLATION WITH MECHANICAL CONTRACTOR.
- 6. PROVIDE 2#12 IN CONDUIT BETWEEN NEW FAN STARTER AND EXISTING JOHNSON CONTROLS METASYS PANEL. TERMINATIONS/NEW RELAYS IN CONTROL PANEL BY MECHANICAL CONTRACTOR.



KEY PLAN
SCALE: N.T.S.

1	ISSUED FOR ADDENDUM 1	JH	22/07/21
0	ISSUED FOR CONSTRUCTION	JH/AS	09/07/21
NO.	Description	BY	DDMMYY

ORIGINAL CONTRACT SIGNED AND SEALED BY J.T. HORROCKS, P. ENG JULY 09, 2021

ORIGINAL CONTRACT SIGNED AND SEALED BY A.J. SCHINKEL, P. ENG JULY 09, 2021

770 Bradford Street
Winnipeg, Canada
T 204 775 0291
SMSeng.com

Project Title
TRANSIT HOIST 10-18 VEHICLE EXHAUST

WINNIPEG MANITOBA

Drawing Title
PARTIAL REPAIR GARAGE MAIN FLOOR PLAN - MECHANICAL AND ELECTRICAL - DEMOLITION AND NEW CONSTRUCTION

Drawn By LP/WPD	Checked By XZ/CRM	Approved By JH/AS
Scale AS NOTED	Date JULY 2021	Project No. 21-083-01
Revision Number 1	Drawing Number ME1.1	Sheet Order 1 OF 5

**Engineers
Geoscientists
MANITOBA**
Certificate of Authorization
SMS Engineering Ltd.
No. 166

FILE NAME AND PATH: G:\PROJECTS\2021\087 Transit Hoist 10-18 Vehicle Exhausts\03_Cad\Rev03.1\Mech\18001_ME1.1_Plan.dwg
LAST SAVED BY: JH
DATE PLOTTED: 2021-07-21 10:53:19 AM