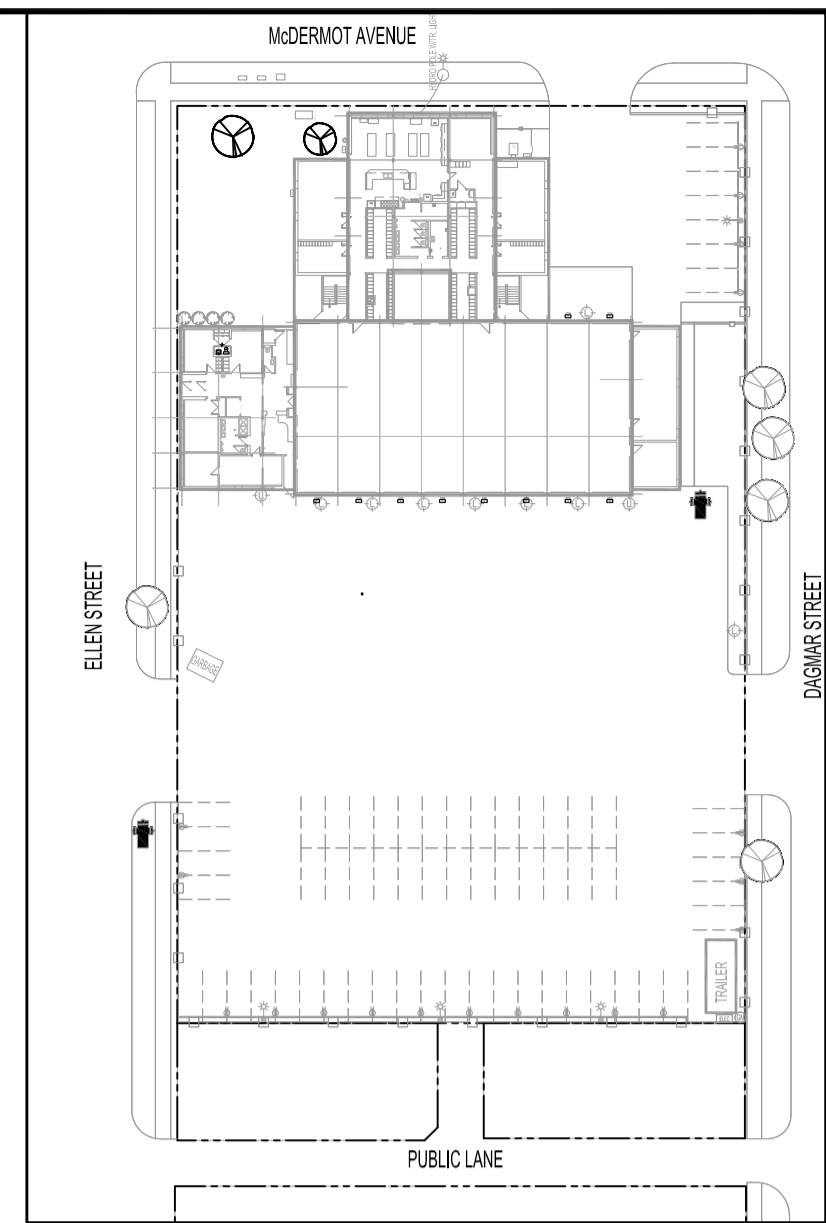


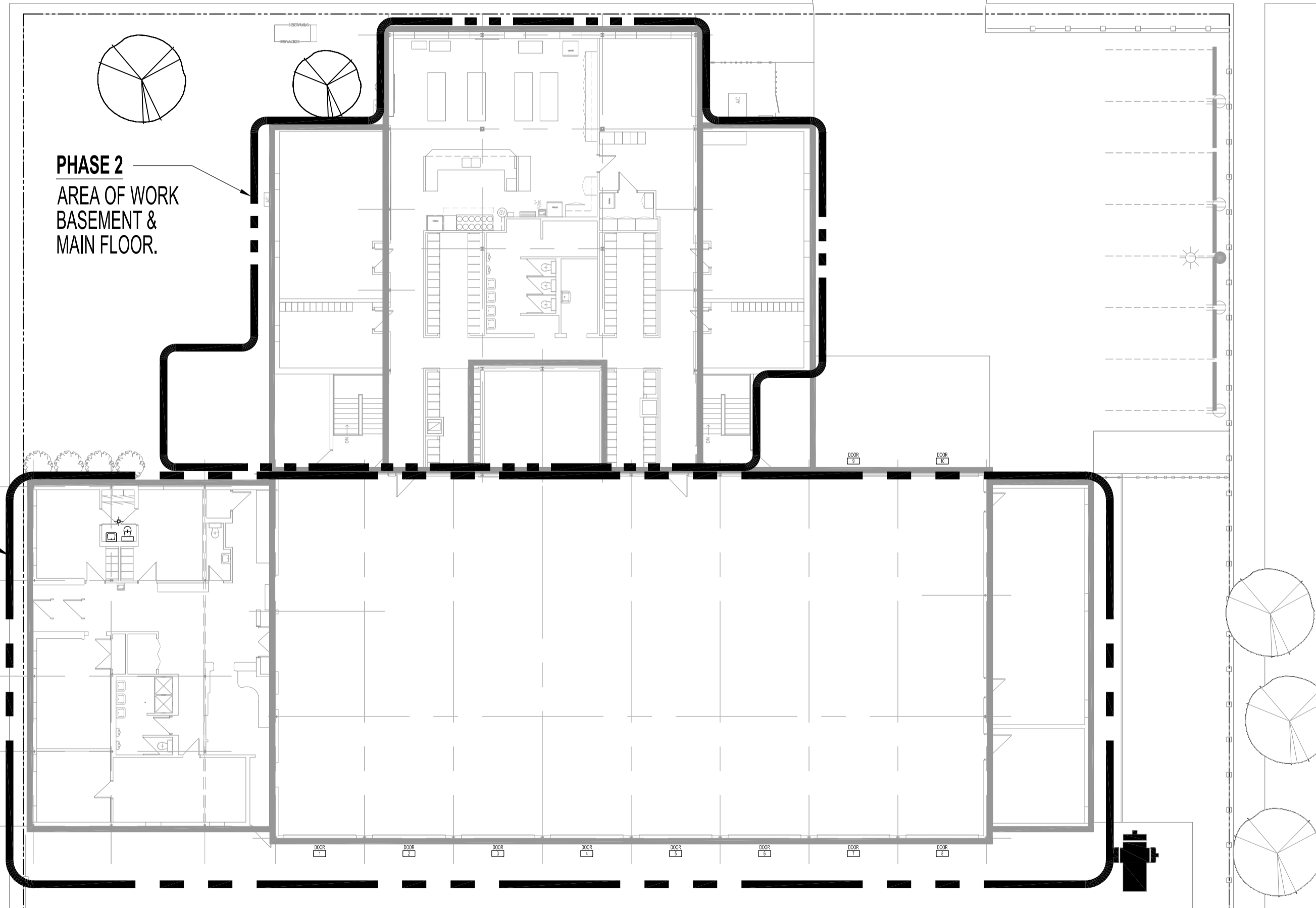
ABBREVIATIONS	DESCRIPTION
A	AMPERE, AMPACITY
AC	ABOVE COUNTER
ACT	ACOUSTIC CEILING TILE
AFF	ABOVE FINISH FLOOR
BC	BENEATH/UNDERSIDE COUNTERTOP
BFC	BELOW FINISH CEILING
CCT	CIRCUIT, CCT: C= PANEL "A"; CT= CIRCUIT "1" (A-1)
CLNG	CEILING
D	DEMOLITION, REMOVE BACK TO SOURCE
DA	DOOR ACTUATOR
DCB	DURESS CALL BUTTON
DED	DEDICATED CIRCUIT
DSW	DISCONNECT SWITCH
DWG	DRAWING
DW	DISHWASHER
E	EXISTING OR "NO DESIGNATION"
EF	EXHAUST FAN
ES	ELECTRIC STRIKE
GFCI	GROUND FAULT CIRCUIT INTERRUPTER
HTR	HEATER
HVAC	HEATING, VENTILATING AND AIR CONDITIONING
HZ	HERTZ
JB	JUNCTION BOX
M	METER
MD	MOTION DETECTOR
MW	MICROWAVE
N	NEW
N.I.C.	NOT IN CONTRACT
NTS	NOT TO SCALE
OC	ON COUNTER
OIC	ON CENTER
OS	OCCUPANCY SENSOR
PNL	PANEL
R	RELOCATE
RC	RE-CIRCUIT
RECPT.	RECEPTACLE
SLD	SINGLE LINE DIAGRAM
SW	SWITCH
TBD	TO BE DETERMINED
TCB	TRAFFIC CONTROL BUTTON
TYP.	TYPICAL
UG	UNDERGROUND
V	VOLT
W	WATT

ELECTRICAL LEGEND	DESCRIPTION
⊕	DUPLEX RECEPTACLE
⊕ <sub>12</sub>	HEIGHT IN INCHES ABOVE FINISH FLOOR TO CENTERLINE OF DEVICE
⊕ <sub>2</sub>	2-GANG DUPLEX RECEPTACLE
⊕ <sub>200</sub>	DUPLEX RECEPTACLE WITH (2) 2A USB 2.2 & 3.0 CAPABLE
⊕ <sub>GF</sub>	GROUND FAULT CIRCUIT INTERRUPTER DUPLEX RECEPTACLE
⊕ <sub>UPS</sub>	(UPS, INPUT) CONNECTOR TO SUIT UPS IN SQUARE BOX 4-11/16", 2-1/8" DEEP, RED FACEPLATE.
⊕ <sub>UPSRT</sub>	(UPS, QUAD RECEPTACLE) 20A/125V (2) UPS BLUE ISOLATED GROUND DUPLEX RECEPTACLES (LEVITON 5362-BIG) IN SQUARE BOX 4-11/16", 2-1/8" DEEP, RED FACEPLATE.
⊕	LIGHT SWITCH, SINGLE POLE
⊕ <sub>DB</sub>	DOOR CHIME BUTTON
INTVDO	7" TOUCHSCREEN VIDEO INTERCOM SET, AIPHONE JPS-44EDV, EACH SET CONTAINS: (1) DOOR STATION, JP-DV; (1) VIDEO MASTER STATION, JP-4MED; (1) POWER SUPPLY, PS-2420UL.
⊕ <sub>DA</sub>	36" DOOR ACTUATOR FOR AUTOMATIC DOOR OPERATOR
⊕ <sub>DSW</sub>	DISCONNECT SWITCH
⊕ <sub>DO-1</sub>	AUTOMATIC DOOR OPERATOR
⊕ <sub>JB</sub>	JUNCTION BOX
⊕ <sub>HT</sub>	HEAT DETECTOR, FIXED TEMP (135°F), CEILING FLUSH/SURFACE MOUNT
⊕ <sub>HT</sub>	HEAT DETECTOR, CEILING SURFACE MOUNT
⊕ <sub>PAS</sub>	PUBLIC ADDRESS SYSTEM CABINET
⊕	PUBLIC ADDRESS MICROPHONE INPUT JACK
⊕ <sub>PA</sub>	PUBLIC ADDRESS SPEAKER
⊕ <sub>PA</sub>	SPEAKER (NEW TO BE 8" SQUARE CEILING SPEAKER, SPECO SPE88TS OR APPROVED EQUIV.) TBD
⊕ <sub>PA</sub>	SPEAKER
⊕ <sub>PA</sub>	SPEAKER
⊕ <sub>PA</sub>	SPEAKER VOLUME CONTROLLER
⊕ <sub>DP</sub>	DATA PORT
⊕ <sub>DP</sub>	FLOOR PEDESTAL DATA PORT
⊕ <sub>VP</sub>	VOICE (PHONE) PORT: CENTRE LAND LINE
⊕ <sub>KP</sub>	KEY PAD/DISPLAY - SECURITY
⊕ <sub>CR</sub>	CARD READER TO KEYPAD - SECURITY
⊕ <sub>EX</sub>	HORN - SECURITY
⊕ <sub>MD</sub>	MOTION DETECTOR - SECURITY
⊕ <sub>PNL</sub>	ELECTRICAL PANEL
⊕ <sub>NA</sub>	NETWORK ACCESS POINT
⊕ <sub>T</sub>	THERMOSTAT
⊕ <sub>CC</sub>	COAXIAL CABLE (TV)
⊕ <sub>TCB</sub>	TRAFFIC CONTROL BUTTON
⊕ <sub>SD</sub>	SMOKE DETECTOR, PHOTOELECTRIC, 120V, INTERCONNECT WITH ALL SMOKE & COMBINATION SMOKE/CO DETECTORS.
⊕ <sub>FCO</sub>	COMBINATION SMOKE/CARBON MONOXIDE DETECTOR, PHOTOELECTRIC, 120V, INTERCONNECT WITH ALL SMOKE & COMBINATION SMOKE/CO DETECTORS.
⊕ <sub>STNA</sub>	STATION ALERTING SYSTEM (LOCUTION PANEL), EXISTING TO BE RELOCATED
⊕ <sub>NR-1</sub>	EIA COMPLIANT 48U NETWORK RACK, 2-POST OPEN FRAME RACK, TOOLLESS BUTTON HOLE MOUNTING FOR VERTICAL PDU & CABLE MANAGERS, BLACK, 800 LBS CAPACITY. PATCH PANEL (2 REOD); 2RU 48-PORT FLAT PANEL (CAT 6) W/FRONT & REAR CABLE MANAGEMENT, LEVITON OR EQUIVALENT
⊕ <sub>STNA</sub>	STATION ALERTING SYSTEM CABINET (TO BE RELOCATED)
⊕ <sub>SA</sub>	STATION ALERTING SYSTEM, STROBE (EXISTING)

ELECTRICAL DRAWING LIST	SHEET No:	SHEET TITLE
E1		ELECTRICAL: ABBREVIATIONS, LEGENDS, SCHEDULES
E2		MAIN FLOOR PLAN: DEMOLITION; POWER AND SYSTEMS
E3		MAIN FLOOR REFLECTED CEILING PLAN: ELECTRICAL - DEMOLITION - LIGHTING
E4,0		MAIN FLOOR PLAN: RENOVATION; POWER AND SYSTEMS
E5		MAIN FLOOR REFLECTED CEILING PLAN: ELECTRICAL - RENOVATION - LIGHTING, FIRE PREVENTION AND LIFE SAFETY
E6		ELECTRICAL - PANEL SCHEDULES
E7		ELECTRICAL - PANEL SCHEDULES
E8,0		ELECTRICAL - SINGLE LINE DIAGRAM
E9		ELECTRICAL SPECIFICATIONS



**KEY PLAN**  
SCALE: N.T.S.



**PARTIAL SITE PLAN**  
SCALE: 1/16" = 1'-0"

- GENERAL NOTES:**
- THESE DRAWINGS SHALL NOT BE SCALED. CONSULT WITH CLIENT AND DESIGNER ON ANY CONCERNS.
    - ITEMS RELATING TO PROJECT 2019-150, ELECTRICAL SERVICE UPGRADE AND NEW EMERGENCY GENERATOR HAVE BEEN REMOVED.
    - EXISTING RECEPTACLES/COMPONENTS WITH CIRCUITS TO PANELS "NP-A", "EP-A" & "EP-B" ARE IN SCOPE OF THIS TENDER.
    - EQUIPMENT/COMPONENTS ID WITH "N" ARE IN SCOPE OF THIS TENDER.
  - THE WORDING "PROVIDE" IS DEFINED AS SUPPLY, INSTALL & CONFIGURE TO FULLY FUNCTION.
  - ALSO REFER TO ARCHITECTURAL, MECHANICAL & ELECTRICAL DRAWINGS & SPECIFICATIONS.
  - SUBMISSION OF SITE MARK-UPS, AS-BUILTS, OPERATING & MAINTENANCE MANUALS AND OTHER SUPPORTING DOCUMENTS TO CLIENT ARE MANDATORY AT THE COMPLETION OF THIS PROJECT.
  - PRIOR TO CONSTRUCTION, THE CONTRACTOR SHALL VISIT THE SITE AND ENSURE ALL DIMENSIONS, DATUM, AND DETAILED INFORMATION SHOWN ARE CORRECT.
  - THE CONTRACTOR IS TO REVIEW AND COORDINATE ALL ARCHITECTURAL, MECHANICAL AND ELECTRICAL DRAWINGS FOR ADDITIONAL OPENINGS THROUGH FLOORS, WALLS, AND CEILINGS FOR DUCTS, PIPES & ELECTRICAL RISERS AND ALL OPENINGS NOT SHOWN ON DRAWINGS.
  - ALL OPENINGS THROUGH FIRE ASSEMBLIES INCLUDING WALLS, FLOORS AND CEILINGS ARE TO BE FIRE STOPPED AND SEALED WITH ULC APPROVED FIRE STOPPING TO MAINTAIN THE INTEGRITY OF THE FIRE SEPARATION, AND PROVIDE A SMOKE-TIGHT BARRIER AS PER CODE.
  - ALL PRODUCTS AND MATERIALS TO BE USED AND INSTALLED SHALL CONFORM WITH MANUFACTURER'S SPECIFICATIONS, APPLICABLE CODES AND AUTHORITY HAVING JURISDICTION.
  - THE CONTRACTOR SHALL BE RESPONSIBLE TO PATCH AND MAKE GOOD ALL EXISTING CONSTRUCTION AFFECTED BY THE REMOVAL OF ALL ITEMS FORMING PART OF THE RENOVATION WORK.
  - PROVIDE DYNA LABELS ON ALL EXISTING SWITCHES, PORTS & RECEPTACLES. PANEL SCHEDULE SHALL BE RETYPED TO REFLECT AS-BUILT CONDITIONS & INSERTED TO INSIDE OF ASSOCIATED PANEL DOOR SLEEVE PROTECTOR. REFER TO ELECTRICAL SPECIFICATIONS FOR NEW EQUIPMENT IDENTIFICATION.
  - ALL ABANDONED (KNOWN & UNKNOWN) ELECTRICAL FIXTURES, COMPONENTS, RECEPTACLES & DATA CABLING SHALL BE REMOVED BACK TO SOURCE & TERMINATED AS PER APPLICABLE CODES.
  - RECONNECT & TEST ALL FIRE PREVENTION EQUIPMENT.
  - SCAN CONCRETE WALLS & FLOORS FOR CONDUITS, WIRING & CABLING PRIOR TO WORK. SUBMIT FINDINGS TO CONTRACT ADMINISTRATOR PRIOR TO CORING &/OR SAW CUTTING.

**WARNING:**  
ASBESTOS MAYBE PRESENT BEHIND WALLS, CEILING SPACE & FLOORS. IF ASBESTOS & ANY HAZARDOUS MATERIAL IS FOUND, STOP WORK IMMEDIATELY & CONTACT CITY OF WINNIPEG, CENTRAL CONTROLS, PH: 204-986-2351.

No.	REVISION/DESCRIPTION	BY	DATE
1	ISSUED FOR ADDENDUM 3	DTA	2021-12-03
0	ISSUED FOR CONSTRUCTION	DTA	2021-10-26
000	ISSUED FOR CLASS 3 ESTIMATE	DTA	2021-06-02

SEAL

DATE	USER	APPROVAL
2021.06.31		

THE CITY OF WINNIPEG  
PLANNING, PROPERTY AND  
DEVELOPMENT DEPARTMENT  
MUNICIPAL ACCOMMODATIONS DIVISION  
3-65 GARRY STREET, R3C 4K4

PROJECT  
WINNIPEG FIRE PARAMEDIC SERVICES  
FIRE STATION #1  
INTERIOR RENOVATIONS  
65 ELLEN STREET BID OPP: 535-2021

**ELECTRICAL**  
ABBREVIATIONS, LEGENDS, SCHEDULES

SCALE	PROJECT No:	SHEET No:
AS SHOWN	2019-075	E1-R1