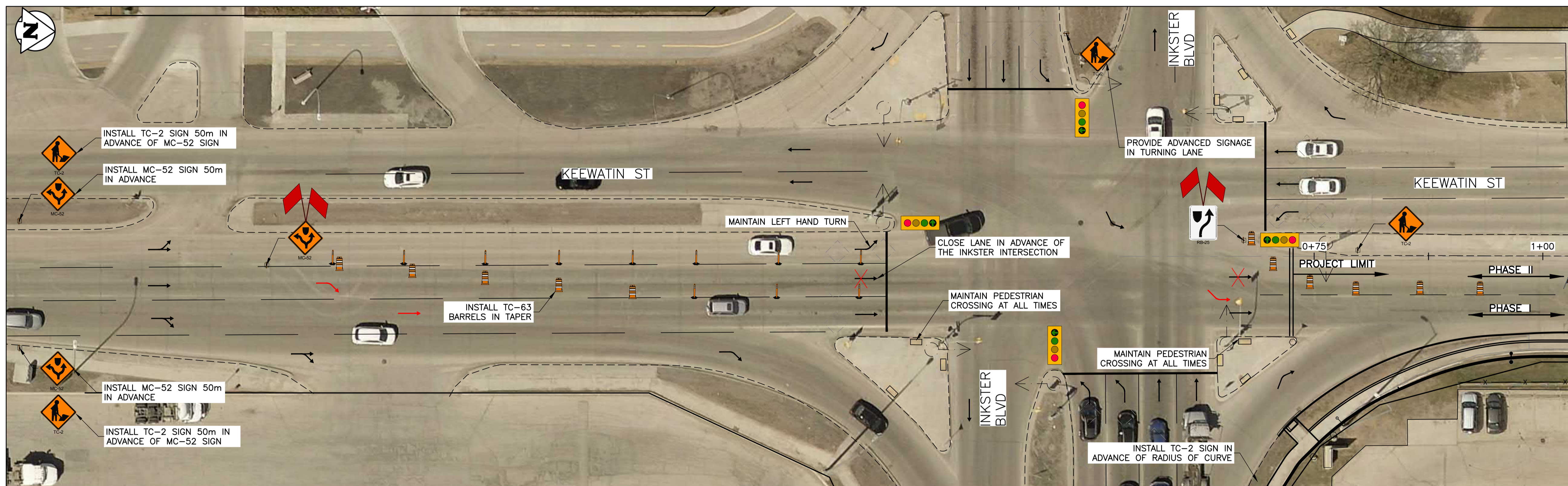


**SIGNAGE PLAN: PHASE I
ADVANCED LANE CLOSURE**
SCALE: 1:250



**SIGNAGE PLAN: PHASE II
ADVANCED LANE CLOSURE**
SCALE: 1:250

- GENERAL NOTES:**
1. ALL TEMPORARY TRAFFIC CONTROL TO BE IN ACCORDANCE WITH THE LATEST MANUAL OF TEMPORARY TRAFFIC CONTROL ON CITY STREETS (MTTC).
 2. PERFORM WORK IN STAGES TO MINIMIZE IMPACT TO TRAFFIC FLOW AND ACCESS TO BUSINESSES.
 3. NOT ALL REQUIRED SIGNAGE IS SHOWN FOR EACH PHASE & SUB-PHASE.
 4. ALL MAJOR ASPHALT OR CONCRETE PAVING SHALL BE DONE AT OFF-PEAK HOURS TO MINIMIZE IMPACT TO TRAFFIC.
 5. PERMANENT POSTED SPEED LIMIT OF 60km/h SHALL BE USED FOR ALL TAPER LENGTHS AND OTHER CRITERIA IN THE MTTC.
 6. SUBMIT ACCESSIBILITY PLAN IN ACCORDANCE WITH E20.
 7. CONTRACTOR SHALL BE RESPONSIBLE FOR THE SUPPLY, PLACEMENT, AND MAINTENANCE OF ALL TEMPORARY TRAFFIC CONTROL SIGNAGE IN ACCORDANCE WITH E5.
 8. CONTRACTOR SHALL BE RESPONSIBLE FOR ALL PERMITS AND LANE CLOSURE REQUESTS. ALL LANE CLOSURES REQUIRE APPROVAL OF THE TRAFFIC MANAGEMENT BRANCH.
 9. CONTRACTOR TO PROVIDE FLAGPERSONS IN ACCORDANCE WITH THE MTTC WHEN MOVING MATERIALS OR EQUIPMENT INTO OR OUT OF TRAFFIC.
 10. CONTRACTOR SHALL PROVIDE FLAGPERSONS DURING ALL ASPHALT PLACEMENT TO MINIMIZE IMPACT TO TRAFFIC.
 11. WHEN FLAGPERSONS ARE PRESENT SIGNAGE MUST BE PLACED IN ACCORDANCE WITH THE MTTC.
 12. WHEN FLAGPERSONS ARE NOT PRESENT THE SIGNAGE MUST BE REMOVED OR HIDDEN.
 13. PROVIDE TEMPORARY RAMPS & CROSSINGS WHERE DIRECTED BY CONTRACT ADMINISTRATOR AND IN ACCORDANCE WITH THE ACCESSIBILITY PLAN FOR PEDESTRIAN CROSSINGS WHILE PERFORMING WORK IN THE INTERSECTIONS AND APPROACHES.
 14. PROVIDE TEMPORARY WOODEN LANDINGS WITH ANTI-SLIP COATINGS FOR ALL TEMPORARY TRANSIT STOPS.
 15. RELOCATE TEMPORARY TRANSIT LANDINGS IN CONSULTATION WITH WINNIPEG TRANSIT AS REQUIRED TO PERFORM THE WORKS. MAINTAIN ACCESSIBLE PATHWAYS TO EACH RELOCATED TEMPORARY TRANSIT LANDING.
 16. INSTALL WARNING FLAGS IN ACCORDANCE WITH MTTC 3.07.04 ON THE FIRST WARNING SIGN IN EACH LANE DROP TAPER.

**ENGINEERS
GEOSCIENTISTS
MANITOBA**
Certificate of Authorization
KGS Group
No. 245

PROPERTY LIMITS DELINEATION
DELINEATION OF PROPERTY LIMITS AS SHOWN ON THIS DWG DOES NOT REPRESENT A "LEGAL SURVEY". KGS GROUP MAKES NO REPRESENTATION OR WARRANTY AS TO THE ACCURACY OF PROPERTY LIMITS DELINEATED ON THIS DWG, NOR ON THE DIMENSIONAL ACCURACY OF DWG FEATURES RELATIVE TO THOSE PROPERTY LIMITS.

WARNING
NOTIFY THE GAS COMPANY OF THE PROPOSED LOCATION OF EXCAVATION.
TAKE PRECAUTION TO AVOID DAMAGE TO GAS COMPANY INSTALLATIONS.
SEE PROVINCIAL REGULATION 210/72 FOR DETAILS.

METRIC
WHOLE NUMBERS INDICATE MILLIMETRES
DECIMALIZED NUMBERS INDICATE METRES

NOTE: MC-52 & MC-60 SIGNAGE IS SHOWN IN THE HIGHWAY TRAFFIC ACT & IS SIMILAR TO THE MTTC WD-A17R & WD-A17L.

300_LDS	LAND DRAINAGE SEWER	300_LDS	TEST HOLE	TEMP. TRAFFIC FLOW	TEMP. TRAFFIC SIGN
250_WWS	WASTE WATER SEWER	250_WWS	GUY WIRE	TEMP. TRAFFIC SIGN	TRAFFIC SIGNAL
---	GAS	---	DETECTABLE TILE	---	---
---	HYDRANT	---	BACK OF CURB	---	---
---	M.T.S.	---	ASPHALT MILL & FILL	---	---
150_WM	WATERMAIN	150_WM	ASPHALT OVERLAY	---	---
+	HYDRANT	+	CONCRETE	---	---
o	VALVE	o	PVMT. REPAIR FABRIC	---	---
o	MANHOLE	o	LANDSCAPING	---	---
o	CATCH BASIN	o	PROPERTY LINE	---	---
▽	CURB INLET	▽	GEODETIC BENCHMARK	---	---
•	POLES	•	ELEVATION	---	---
EXISTING	LEGEND-PLAN	PROPOSED	EXISTING	LEGEND-PLAN	PROPOSED

LOCATION APPROVED UNDERGROUND STRUCTURES
SUPV. U/G STRUCTURES COMMITTEE DATE
NOTE: LOCATION OF UNDERGROUND STRUCTURES AS SHOWN ARE BASED ON THE BEST INFORMATION AVAILABLE BUT NO GUARANTEE IS GIVEN THAT ALL EXISTING UTILITIES ARE SHOWN OR THAT THE GIVEN LOCATIONS ARE EXACT. CONFIRMATION OF EXISTENCE AND EXACT LOCATION OF ALL SERVICES MUST BE OBTAINED FROM THE INDIVIDUAL UTILITIES BEFORE PROCEEDING WITH CONSTRUCTION.

B.M. KGS_BASE	COORDINATE SYSTEM: CGVD28
ELEV. 249.213	
NO.	REVISIONS
DATE	BY

KGS GROUP		ENGINEER'S SEAL
DESIGNED BY: GES	CHECKED BY: GEL	PROJECT TITLE KEEWATIN STREET NORTHBOUND REHABILITATION INKSTER BOULEVARD TO ADSUM DRIVE SIGNAGE PLAN PHASE I & II: INKSTER INTERSECTION
DRAWN BY: GES	APPROVED BY: CR	
HOR. SCALE: 1:250	RELEASED FOR CONSTRUCTION:	CONSULTANT DRAWING NO. C500
VERTICAL:	DATE: 2021-05-01	

ISSUED FOR TENDER
NOT TO BE USED FOR CONSTRUCTION

THE CITY OF WINNIPEG PUBLIC WORKS DEPARTMENT ENGINEERING DIVISION	SHEET OF 16 OF 22 COMPUTER FILE NAME 21-0107-006 CITY DRAWING NUMBER P-3551-15
---	---

P:\PROJECTS\2021\21-0107-006\DWG\MUN\21-0107-006_C-SIGNAGE\DWG01-11.PLOT 1:1 (A-1)