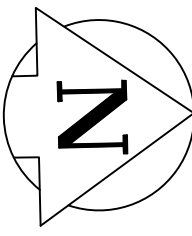
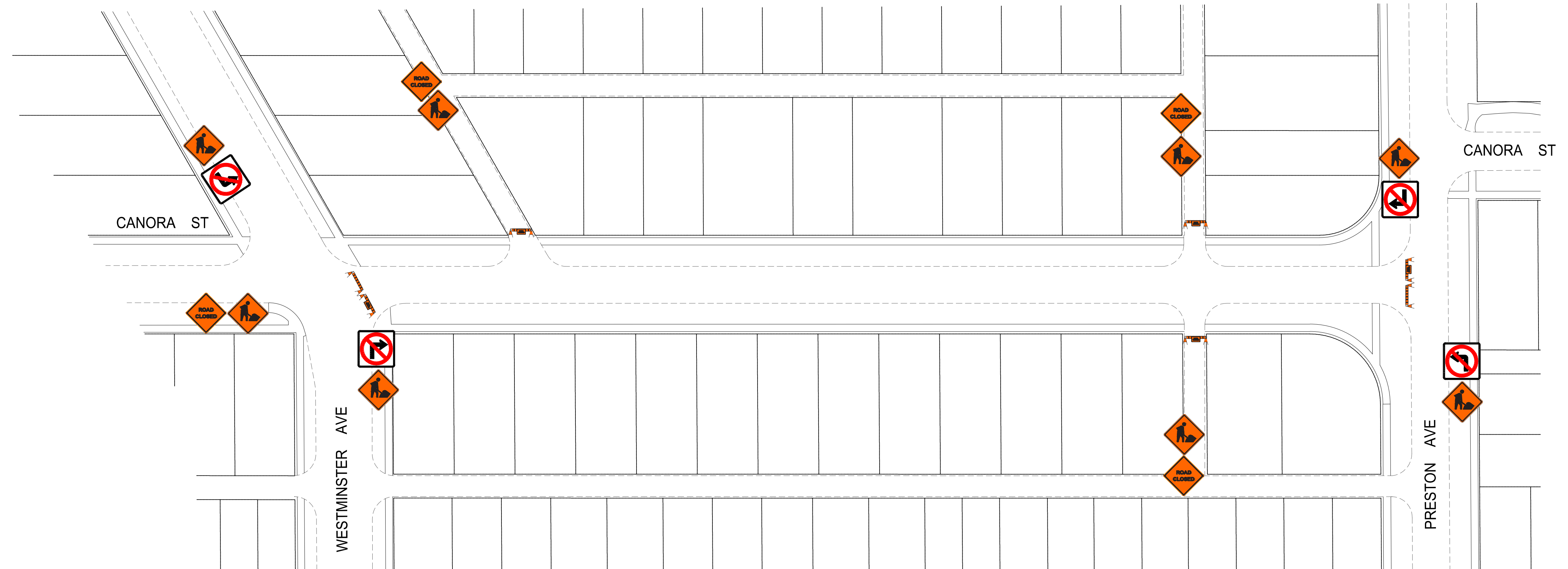


APPENDIX 'H'

**TEMPORARY TRAFFIC SIGNAGE
DRAWINGS**



CANORA STREET



TRAFFIC SIGNAGE

TC-2 ROADWORK

ROAD CLOSED

NO EXIT

RB-11 (L/R) TURN PROHIBITED

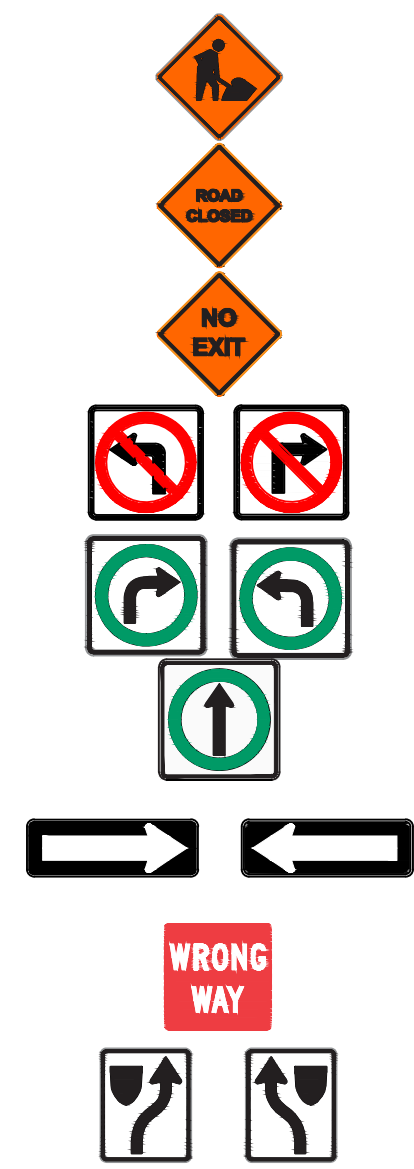
RB-14R TURN RIGHT / RB-14L TURN LEFT

RB-15 TURNS PROHIBITED

RB-21 (L/R) ONE-WAY SIGN

RB-22 WRONG WAY SIGN

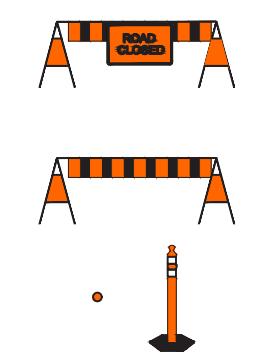
RB-25R KEEP RIGHT / RB-25L KEEP LEFT



ROAD CLOSED BARRICADE

BARRICADE

POLY POST



NOTES:

1. ALL TRAFFIC SIGNAGE AND TEMPORARY TRAFFIC CONTROL TO CONFORM WITH THE LATEST REVISION OF THE CITY OF WINNIPEG MANUAL OF TEMPORARY TRAFFIC CONTROL ON CITY STREETS
2. CONTRACTOR SHALL MAINTAIN SAFE PEDESTRIAN ACCESS AND CROSSINGS, WHERE SIDEWALKS ARE LOCATED ON BOTH SIDES OF THE STREET, CONTRACTOR MUST MAINTAIN PEDESTRIAN ACCESS ON ONE SIDE AT ALL TIME.
3. ROAD IS TO BE CLOSED FOR THE DURATION OF CONSTRUCTION.

METRIC

WHOLE NUMBERS INDICATE MILLIMETRES
DECIMALIZED NUMBERS INDICATE METRES

**ENGINEERS
GEOSCIENTISTS
MANITOBA**
Certificate of Authorization
WSP Canada Inc.
No. 5750

FOR INFORMATION ONLY

THE CITY OF WINNIPEG
PUBLIC WORKS DEPARTMENT
ENGINEERING SERVICES DIVISION

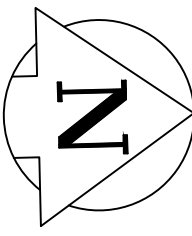
2022 LOCAL STREET RENEWALS

CANORA STREET
TEMPORARY TRAFFIC SIGNAGE

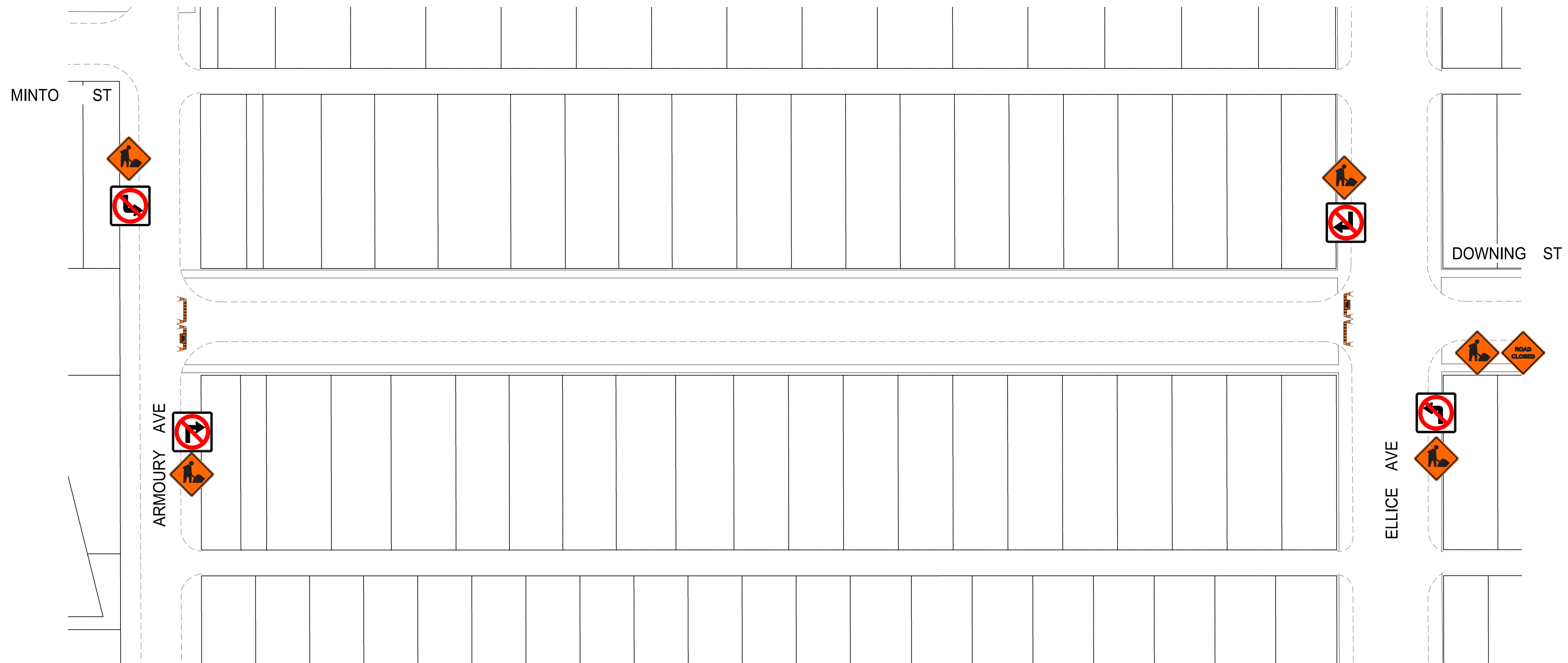


WSP Canada Inc.
1600 Buffalo Place
Winnipeg, MB R3T 6B8
t. 204.477.6650
f. 204.474.2864
www.wsp.com

Apr 04, 2022 - 9:44am
F:\2021\211-12623-00 - 2022 Street Program Package 22-R-05\4.0 Tech + Prof Services\4.11 Highways_Bridges\4.11.06 Drawings\03 Working Dwg\Canora ST_Signage.dwg - tab:CANORA ST



DOWNING STREET



TRAFFIC SIGNAGE

TC-2 ROADWORK

ROAD CLOSED

NO EXIT

RB-11 (L/R) TURN PROHIBITED

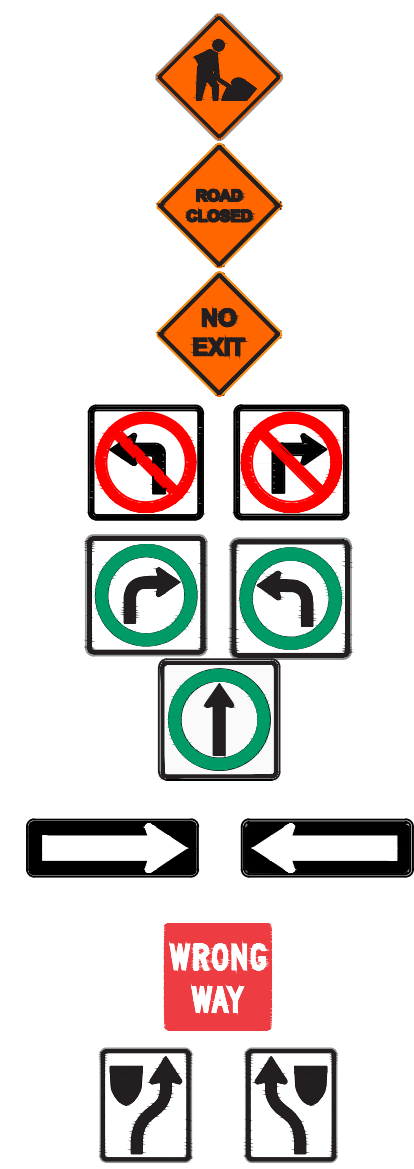
RB-14R TURN RIGHT / RB-14L TURN LEFT

RB-15 TURNS PROHIBITED

RB-21 (L/R) ONE-WAY SIGN

RB-22 WRONG WAY SIGN

RB-25R KEEP RIGHT / RB-25L KEEP LEFT



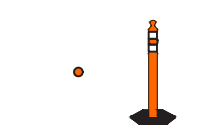
ROAD CLOSED BARRICADE



BARRICADE



POLY POST



NOTES:

1. ALL TRAFFIC SIGNAGE AND TEMPORARY TRAFFIC CONTROL TO CONFORM WITH THE LATEST REVISION OF THE CITY OF WINNIPEG MANUAL OF TEMPORARY TRAFFIC CONTROL ON CITY STREETS
2. CONTRACTOR SHALL MAINTAIN SAFE PEDESTRIAN ACCESS AND CROSSINGS. WHERE SIDEWALKS ARE LOCATED ON BOTH SIDES OF THE STREET, CONTRACTOR MUST MAINTAIN PEDESTRIAN ACCESS ON ONE SIDE AT ALL TIME.
3. ROAD IS TO BE CLOSED FOR THE DURATION OF THE PROJECT.

METRIC

WHOLE NUMBERS INDICATE MILLIMETRES
DECIMALIZED NUMBERS INDICATE METRES



FOR INFORMATION ONLY

THE CITY OF WINNIPEG
PUBLIC WORKS DEPARTMENT
ENGINEERING SERVICES DIVISION

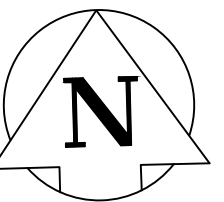
2022 LOCAL STREET RENEWALS

DOWNING STREET

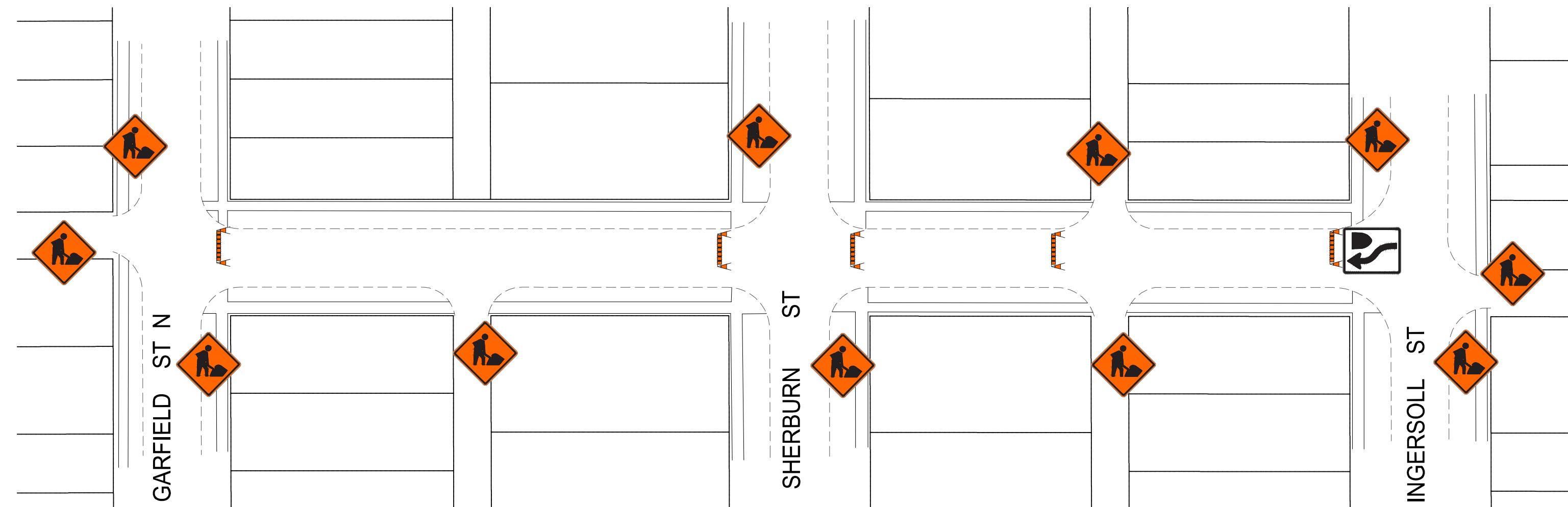
TEMPORARY TRAFFIC SIGNAGE



WSP Canada Inc.
1600 Buffalo Place
Winnipeg, MB R3T 6B8
t. 204.477.6650
f. 204.474.2864
www.wsp.com



GRUNDY AVENUE



TRAFFIC SIGNAGE

TC-2 ROADWORK

ROAD CLOSED

NO EXIT

RB-11 (L/R) TURN PROHIBITED

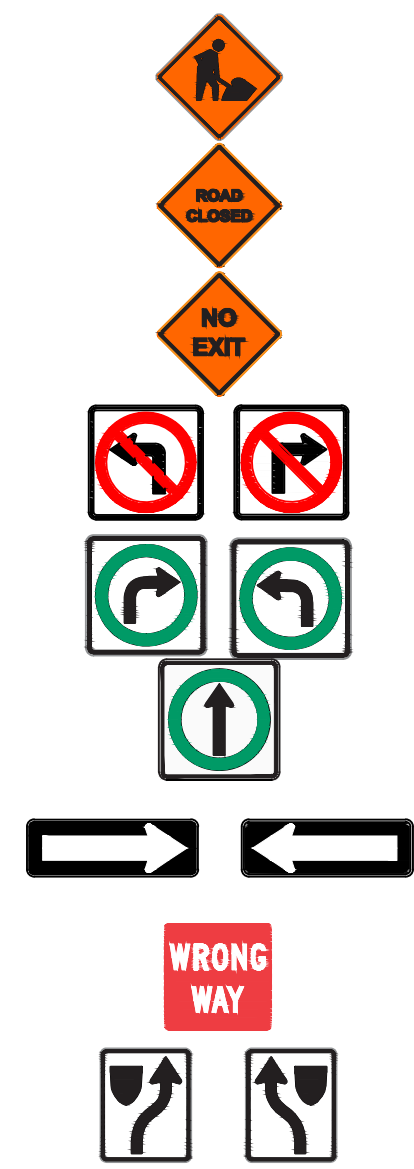
RB-14R TURN RIGHT / RB-14L TURN LEFT

RB-15 TURNS PROHIBITED

RB-21 (L/R) ONE-WAY SIGN

RB-22 WRONG WAY SIGN

RB-25R KEEP RIGHT / RB-25L KEEP LEFT



ROAD CLOSED BARRICADE



BARRICADE



POLY POST



NOTES:

1. ALL TRAFFIC SIGNAGE AND TEMPORARY TRAFFIC CONTROL TO CONFORM WITH THE LATEST REVISION OF THE CITY OF WINNIPEG MANUAL OF TEMPORARY TRAFFIC CONTROL ON CITY STREETS
2. CONTRACTOR SHALL MAINTAIN SAFE PEDESTRIAN ACCESS AND CROSSINGS. WHERE SIDEWALKS ARE LOCATED ON BOTH SIDES OF THE STREET, CONTRACTOR MUST MAINTAIN PEDESTRIAN ACCESS ON ONE SIDE AT ALL TIME.
3. CONSTRUCTION IS TO BE COMPLETED LANE AT A TIME WITH TRAFFIC TO BE MAINTAINED BOTH DIRECTIONS. WHEN CONSTRUCTION IS COMPLETED IN FIRST LANE, TRAFFIC WILL BE MOVED TO THE COMPLETED LANE AND TRAFFIC CONTROL MIRRORED.
4. PARKING TO BE REMOVED AT THE TIME OF CONSTRUCTION

METRIC

WHOLE NUMBERS INDICATE MILLIMETRES
DECIMALIZED NUMBERS INDICATE METRES



FOR INFORMATION ONLY

 **THE CITY OF WINNIPEG**
PUBLIC WORKS DEPARTMENT
ENGINEERING SERVICES DIVISION

2022 LOCAL STREET RENEWALS

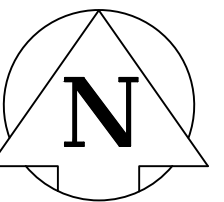
GRUNDY AVENUE
TEMPORARY TRAFFIC SIGNAGE



WSP Canada Inc.
1600 Buffalo Place
Winnipeg, MB R3T 6B8
t. 204.477.6650
f. 204.474.2864
www.wsp.com

Apr 04, 2022 - 10:03am
F:\2021\21-12623-00 - 2022 Street Program Package 22-R-05\4.0 Tech + Prof Services\4.11 Highways_Bridges\4.11.06 Drawings\03 Working Dwg\Grundy Ave_Signage.dwg -tab:GRUNDY AVE

Apr 04, 2022 - 10:06am
 F:\2021\211-12623-00 - 2022 Street Program Package 22-R-05\4.0 Tech + Prof Services\4.11 Highways_Bridges\4.11.06 Drawings\03 Working Dwg\Hume St_Kairistine Ln_Signage.dwg - tab:HUME ST_KAIRISTINE ALLEY



TRAFFIC SIGNAGE

TC-2 ROADWORK

ROAD CLOSED

NO EXIT

RB-11 (L/R) TURN PROHIBITED

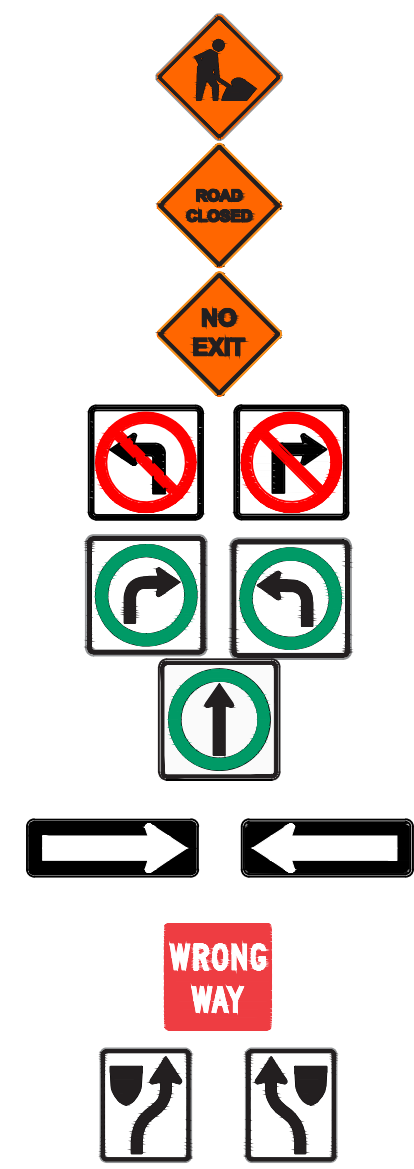
RB-14R TURN RIGHT / RB-14L TURN LEFT

RB-15 TURNS PROHIBITED

RB-21 (L/R) ONE-WAY SIGN

RB-22 WRONG WAY SIGN

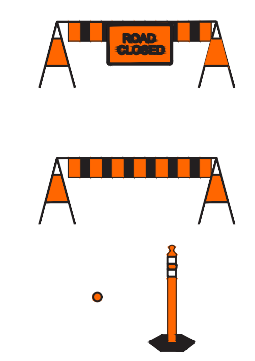
RB-25R KEEP RIGHT / RB-25L KEEP LEFT



ROAD CLOSED BARRICADE

BARRICADE

POLY POST



NOTES:

1. ALL TRAFFIC SIGNAGE AND TEMPORARY TRAFFIC CONTROL TO CONFORM WITH THE LATEST REVISION OF THE CITY OF WINNIPEG MANUAL OF TEMPORARY TRAFFIC CONTROL ON CITY STREETS
2. CONTRACTOR SHALL MAINTAIN SAFE PEDESTRIAN ACCESS AND CROSSINGS. WHERE SIDEWALKS ARE LOCATED ON BOTH SIDES OF THE STREET, CONTRACTOR MUST MAINTAIN PEDESTRIAN ACCESS ON ONE SIDE AT ALL TIME.
3. CONSTRUCTION IS TO BE DONE IN PHASES WITH THE DIRECTION OF THE CONTRACT ADMINISTRATOR. ONCE A PHASE IS COMPLETE, THE CONTRACTOR WILL OPEN UP THE COMPLETED PHASE AND CLOSE THE NEXT PHASE.

METRIC

WHOLE NUMBERS INDICATE MILLIMETRES
 DECIMALIZED NUMBERS INDICATE METRES



FOR INFORMATION ONLY

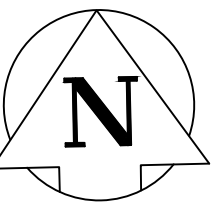
THE CITY OF WINNIPEG
 PUBLIC WORKS DEPARTMENT
 ENGINEERING SERVICES DIVISION

2022 LOCAL STREET RENEWALS
 HUME STREET / KAIRISTINE LANE ALLEY

TEMPORARY TRAFFIC SIGNAGE

wsp

WSP Canada Inc.
 1600 Buffalo Place
 Winnipeg, MB R3T 6B8
 t. 204.477.6650
 f. 204.474.2864
 www.wsp.com



TRAFFIC SIGNAGE

TC-2 ROADWORK

ROAD CLOSED

NO EXIT

RB-11 (L/R) TURN PROHIBITED

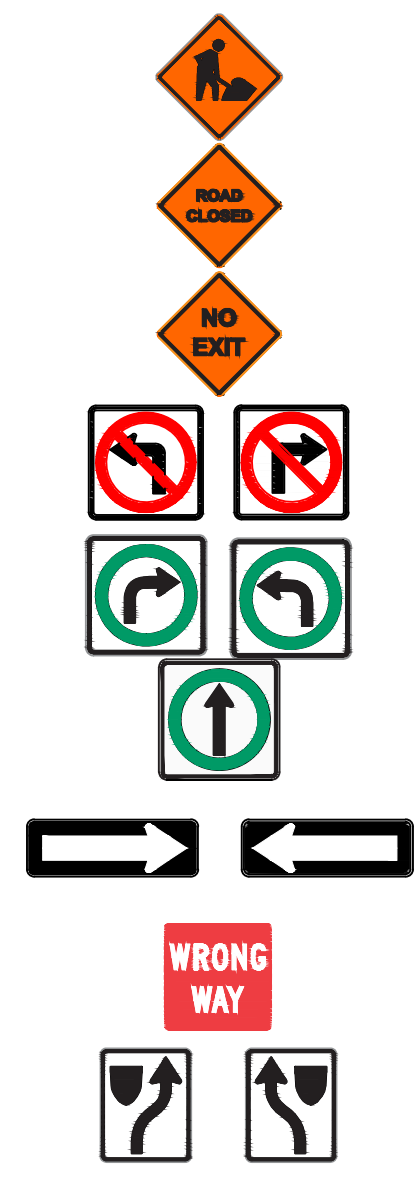
RB-14R TURN RIGHT / RB-14L TURN LEFT

RB-15 TURNS PROHIBITED

RB-21 (L/R) ONE-WAY SIGN

RB-22 WRONG WAY SIGN

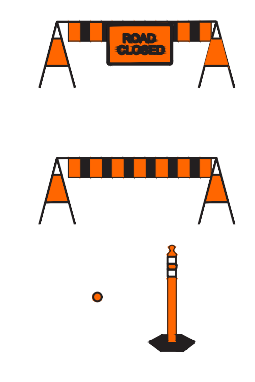
RB-25R KEEP RIGHT / RB-25L KEEP LEFT



ROAD CLOSED BARRICADE

BARRICADE

POLY POST



NOTES:

1. ALL TRAFFIC SIGNAGE AND TEMPORARY TRAFFIC CONTROL TO CONFORM WITH THE LATEST REVISION OF THE CITY OF WINNIPEG MANUAL OF TEMPORARY TRAFFIC CONTROL ON CITY STREETS
2. CONTRACTOR SHALL MAINTAIN SAFE PEDESTRIAN ACCESS AND CROSSINGS. WHERE SIDEWALKS ARE LOCATED ON BOTH SIDES OF THE STREET, CONTRACTOR MUST MAINTAIN PEDESTRIAN ACCESS ON ONE SIDE AT ALL TIME.
3. PALMERSTON AVENUE IS TO BE COMPLETED IN PHASES WITH THE DIRECTION OF THE CONTRACT ADMINISTRATOR. ONCE A PHASE IS COMPLETED, CONTRACTOR WILL OPEN COMPLETED PHASE AND CLOSE NEXT PHASE.

METRIC

WHOLE NUMBERS INDICATE MILLIMETRES
DECIMALIZED NUMBERS INDICATE METRES



FOR INFORMATION ONLY

THE CITY OF WINNIPEG
PUBLIC WORKS DEPARTMENT
ENGINEERING SERVICES DIVISION

2022 LOCAL STREET RENEWALS

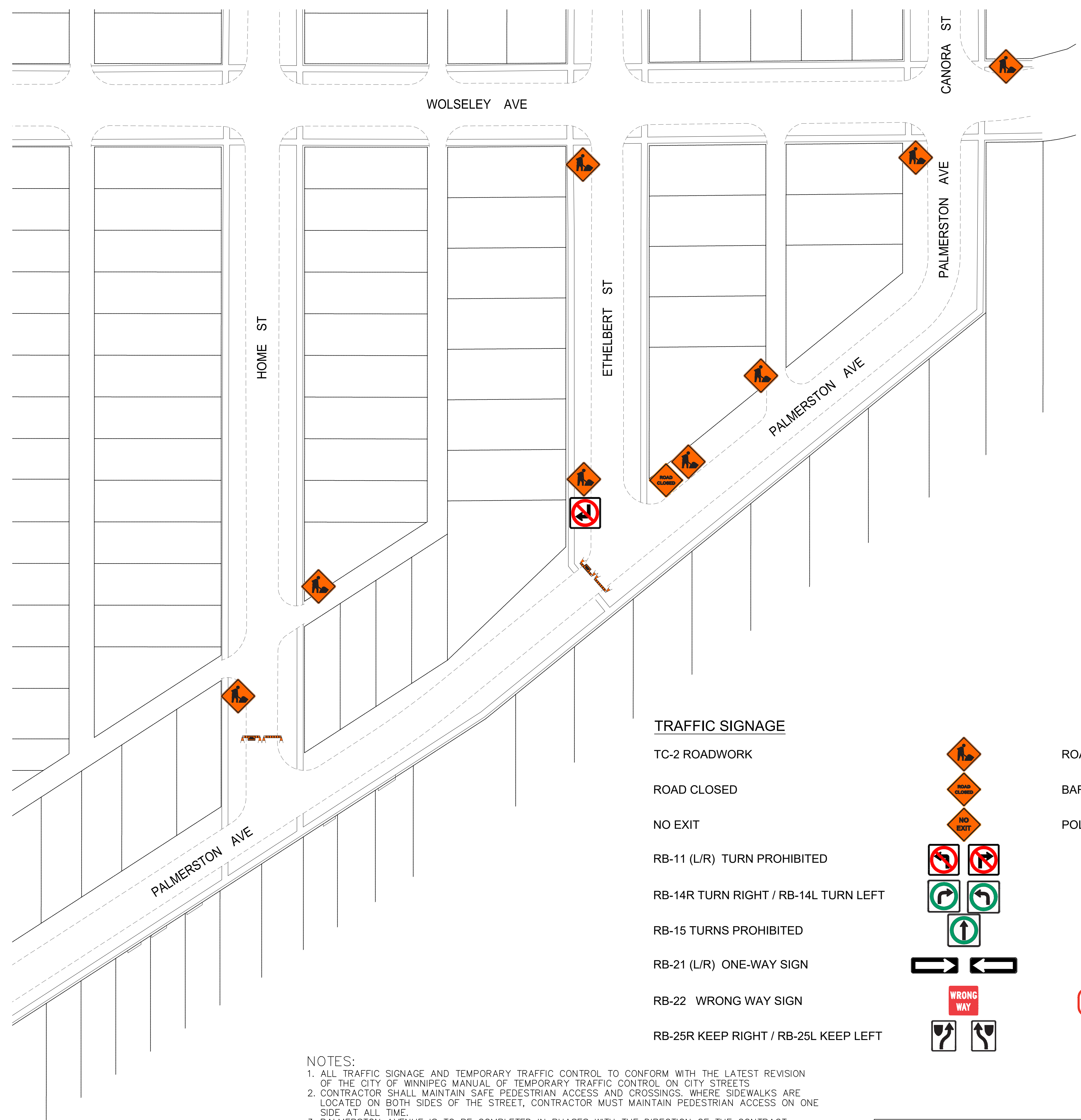
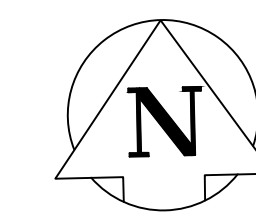
PALMERSTON AVENUE

TEMPORARY TRAFFIC SIGNAGE



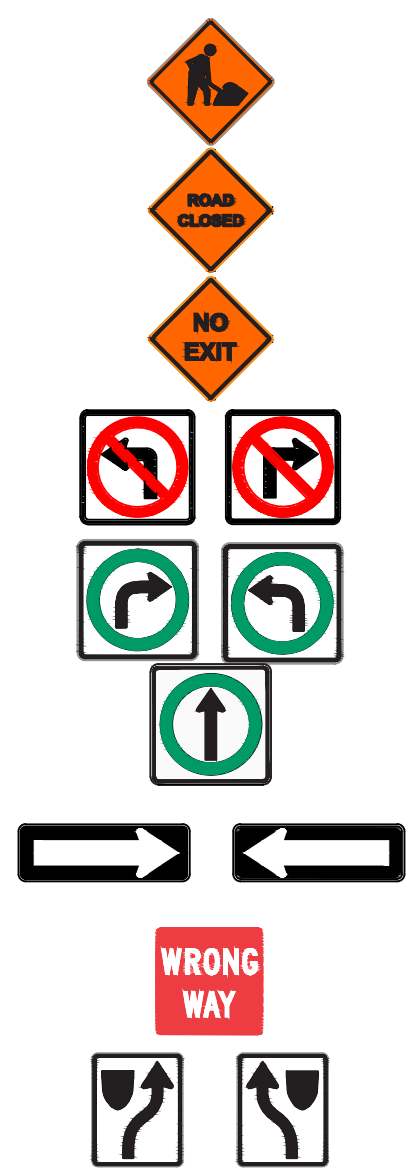
WSP Canada Inc.
1600 Buffalo Place
Winnipeg, MB R3T 6B8
t. 204.477.6650
f. 204.474.2864
www.wsp.com

Apr 04, 2022 - 10:13am
F:\2021\211-12623-00 - 2022 Street Program Package 22-R-05\4.0 Tech + Prof Services\4.11 Highways_Bridges\4.11.06 Drawings\03 Working Dwg\Palmerston Ave_Signage.dwg - tab:PALMERSTON AVENUE_1

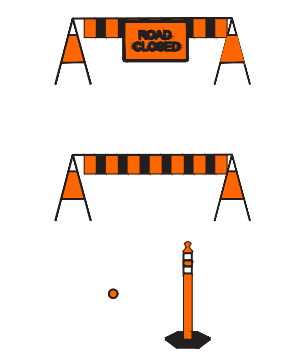


TRAFFIC SIGNAGE

- TC-2 ROADWORK
- ROAD CLOSED
- NO EXIT
- RB-11 (L/R) TURN PROHIBITED
- RB-14R TURN RIGHT / RB-14L TURN LEFT
- RB-15 TURNS PROHIBITED
- RB-21 (L/R) ONE-WAY SIGN
- RB-22 WRONG WAY SIGN
- RB-25R KEEP RIGHT / RB-25L KEEP LEFT



- ROAD CLOSED BARRICADE
- BARRICADE
- POLY POST



METRIC
WHOLE NUMBERS INDICATE MILLIMETRES
DECIMALIZED NUMBERS INDICATE METRES

**ENGINEERS
GEOSCIENTISTS
MANITOBA**
Certificate of Authorization
WSP Canada Inc.
No. 5750

FOR INFORMATION ONLY

NOTES:

1. ALL TRAFFIC SIGNAGE AND TEMPORARY TRAFFIC CONTROL TO CONFORM WITH THE LATEST REVISION OF THE CITY OF WINNIPEG MANUAL OF TEMPORARY TRAFFIC CONTROL ON CITY STREETS
2. CONTRACTOR SHALL MAINTAIN SAFE PEDESTRIAN ACCESS AND CROSSINGS. WHERE SIDEWALKS ARE LOCATED ON BOTH SIDES OF THE STREET, CONTRACTOR MUST MAINTAIN PEDESTRIAN ACCESS ON ONE SIDE AT ALL TIME.
3. PALMERSTON AVENUE IS TO BE COMPLETED IN PHASES WITH THE DIRECTION OF THE CONTRACT ADMINISTRATOR. ONCE A PHASE IS COMPLETED, CONTRACTOR WILL OPEN COMPLETED PHASE AND CLOSE NEXT PHASE.



WSP Canada Inc.
1600 Buffalo Place
Winnipeg, MB R3T 6B8
t. 204.477.6650
f. 204.474.2864
www.wsp.com

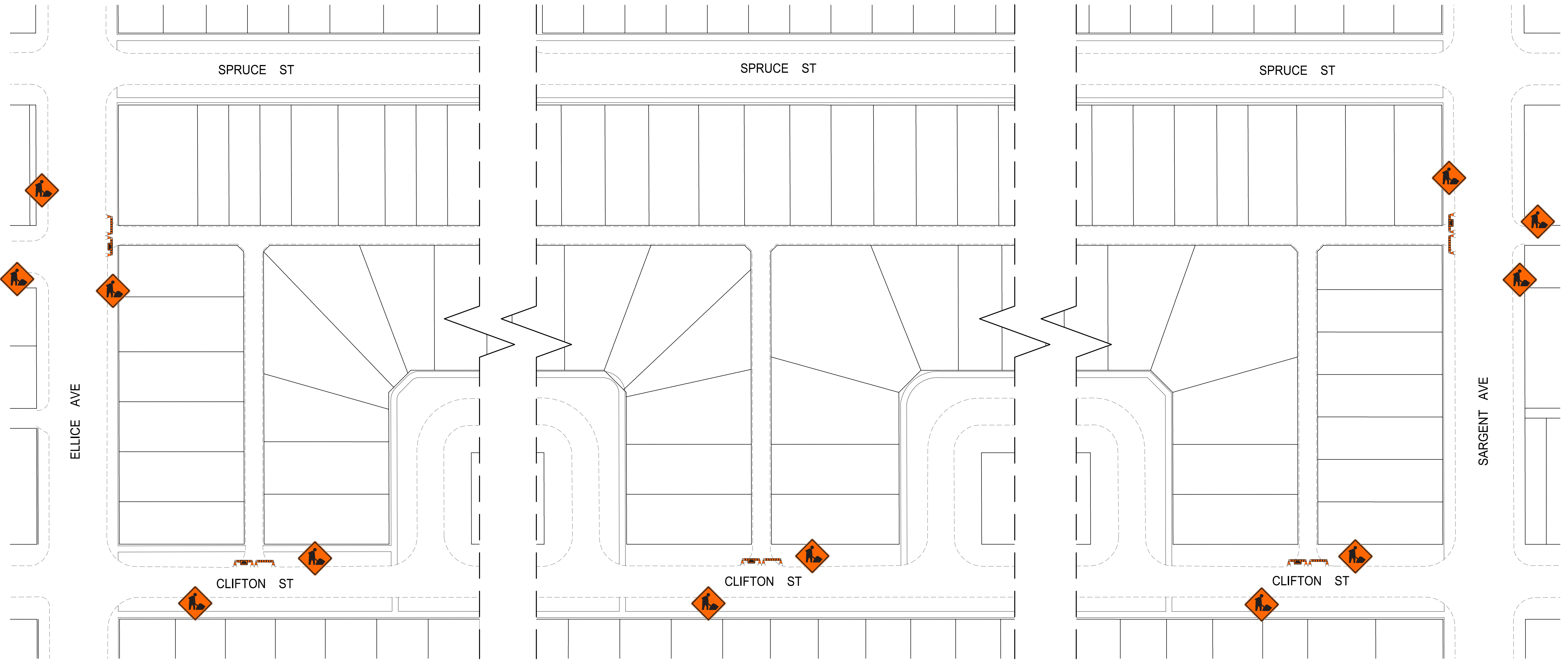
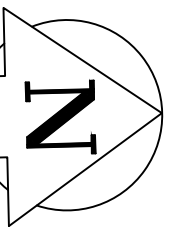
Winnipeg THE CITY OF WINNIPEG
PUBLIC WORKS DEPARTMENT
ENGINEERING SERVICES DIVISION

2022 LOCAL STREET RENEWALS

PALMERSTON AVENUE (CONT'D)

TEMPORARY TRAFFIC SIGNAGE

SPRUCE STREET / CLIFTON STREET ALLEY



TRAFFIC SIGNAGE

TC-2 ROADWORK

ROAD CLOSED

NO EXIT

RB-11 (L/R) TURN PROHIBITED

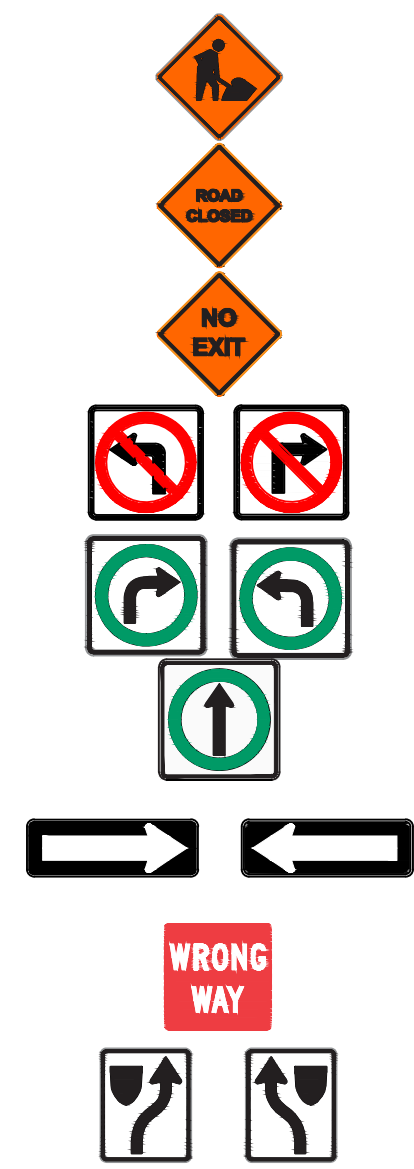
RB-14R TURN RIGHT / RB-14L TURN LEFT

RB-15 TURNS PROHIBITED

RB-21 (L/R) ONE-WAY SIGN

RB-22 WRONG WAY SIGN

RB-25R KEEP RIGHT / RB-25L KEEP LEFT



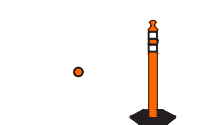
ROAD CLOSED BARRICADE



BARRICADE



POLY POST



NOTES:

1. ALL TRAFFIC SIGNAGE AND TEMPORARY TRAFFIC CONTROL TO CONFORM WITH THE LATEST REVISION OF THE CITY OF WINNIPEG MANUAL OF TEMPORARY TRAFFIC CONTROL ON CITY STREETS.
2. CONTRACTOR SHALL MAINTAIN SAFE PEDESTRIAN ACCESS AND CROSSINGS. WHERE SIDEWALKS ARE LOCATED ON BOTH SIDES OF THE STREET, CONTRACTOR MUST MAINTAIN PEDESTRIAN ACCESS ON ONE SIDE AT ALL TIME.
3. CONSTRUCTION IS TO BE DONE IN PHASES WITH THE DIRECTION OF THE CONTRACT ADMINISTRATOR. ONCE A PHASE IS COMPLETE, THE CONTRACTOR WILL OPEN UP THE COMPLETED PHASE AND CLOSE THE NEXT PHASE.

METRIC

WHOLE NUMBERS INDICATE MILLIMETRES
DECIMALIZED NUMBERS INDICATE METRES



FOR INFORMATION ONLY

THE CITY OF WINNIPEG
PUBLIC WORKS DEPARTMENT
ENGINEERING SERVICES DIVISION

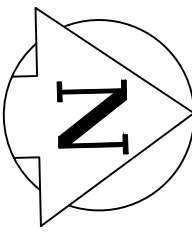
2022 LOCAL STREET RENEWALS
SPRUCE STREET / CLIFTON STREET ALLEY

TEMPORARY TRAFFIC SIGNAGE



WSP Canada Inc.
1600 Buffalo Place
Winnipeg, MB R3T 6B8
T. 204.477.6650
F. 204.474.2864
www.wsp.com

Apr 04, 2022 - 10:32am
F:\2021\21-12623-00 - 2022 Street Program Package 22-R-05\4.0 Tech + Prof Services\4.11 Highways_Bridges\4.11.06 Drawings\03 Working Dwg\Sargent Ave\Clifton St_Signage.dwg - tab:SPRUCE ST_CLIFTON ST ALLEY



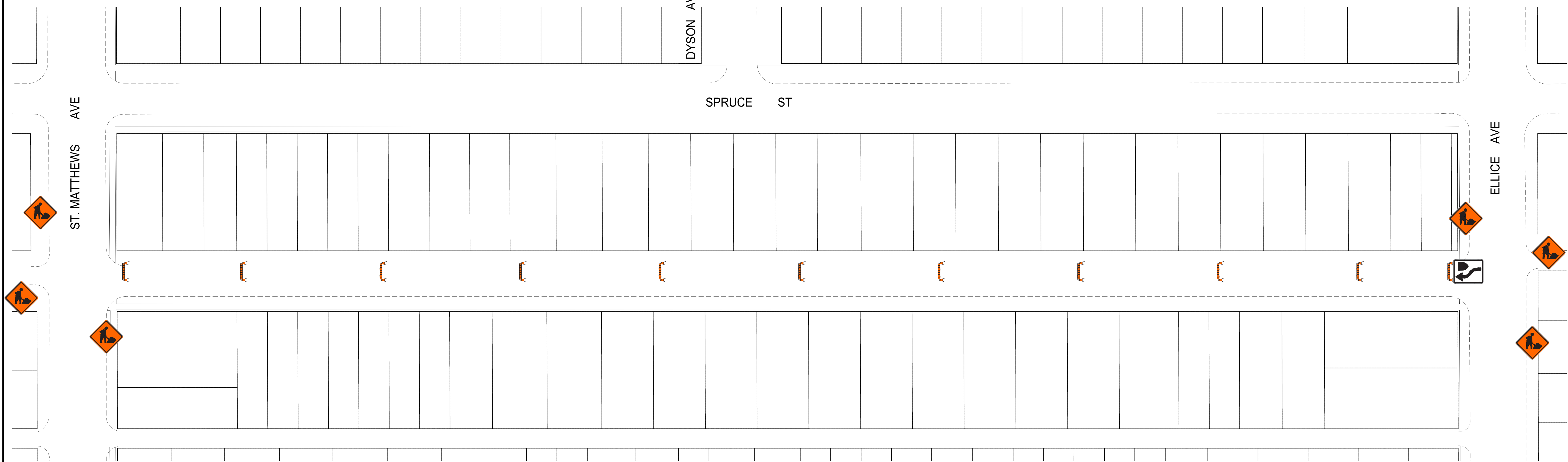
TELFER STREET N

DYSON AVE

SPRUCE ST

ST. MATTHEWS AVE

ELLICE AVE



TRAFFIC SIGNAGE

TC-2 ROADWORK

ROAD CLOSED

NO EXIT

RB-11 (L/R) TURN PROHIBITED

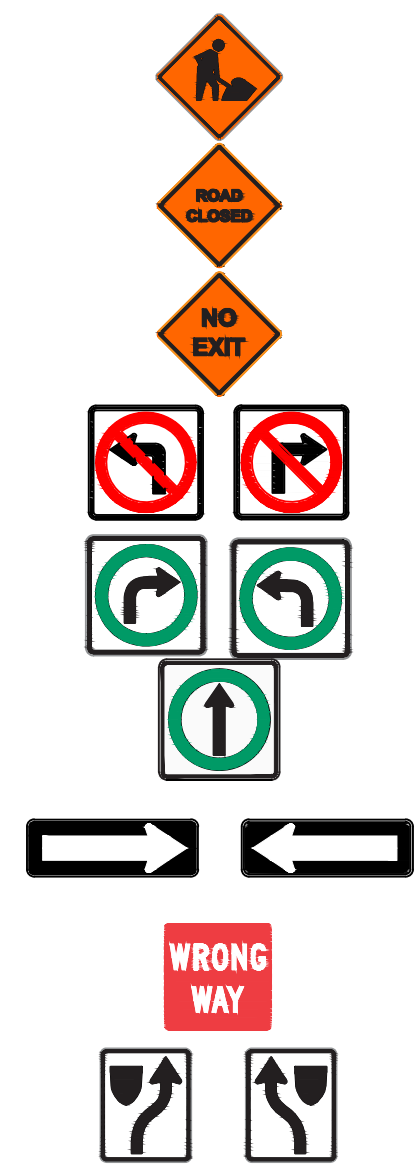
RB-14R TURN RIGHT / RB-14L TURN LEFT

RB-15 TURNS PROHIBITED

RB-21 (L/R) ONE-WAY SIGN

RB-22 WRONG WAY SIGN

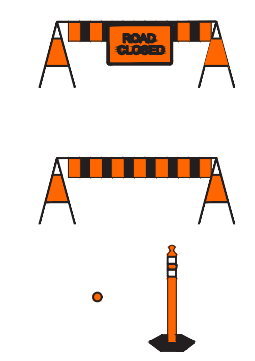
RB-25R KEEP RIGHT / RB-25L KEEP LEFT



ROAD CLOSED BARRICADE

BARRICADE

POLY POST



NOTES:

1. ALL TRAFFIC SIGNAGE AND TEMPORARY TRAFFIC CONTROL TO CONFORM WITH THE LATEST REVISION OF THE CITY OF WINNIPEG MANUAL OF TEMPORARY TRAFFIC CONTROL ON CITY STREETS
2. CONTRACTOR SHALL MAINTAIN SAFE PEDESTRIAN ACCESS AND CROSSINGS. WHERE SIDEWALKS ARE LOCATED ON BOTH SIDES OF THE STREET, CONTRACTOR MUST MAINTAIN PEDESTRIAN ACCESS ON ONE SIDE AT ALL TIME.
3. CONSTRUCTION IS TO BE COMPLETED LANE AT A TIME WITH TRAFFIC TO BE MAINTAINED IN BOTH DIRECTIONS. WHEN CONSTRUCTION IS COMPLETE IN FIRST LANE, TRAFFIC WILL BE MOVED TO THE COMPLETED LANE AND TRAFFIC MIRRORED.
4. PARKING TO BE REMOVED AT THE TIME OF CONSTRUCTION

METRIC

WHOLE NUMBERS INDICATE MILLIMETRES
DECIMALIZED NUMBERS INDICATE METRES



FOR INFORMATION ONLY

THE CITY OF WINNIPEG
PUBLIC WORKS DEPARTMENT
ENGINEERING SERVICES DIVISION

2022 LOCAL STREET RENEWALS

TELFER STREET N

TEMPORARY TRAFFIC SIGNAGE



WSP Canada Inc.
1600 Buffalo Place
Winnipeg, MB R3T 6B8
t. 204.477.6650
f. 204.474.2864
www.wsp.com

Apr 04, 2022 - 10:36am
F:\2021\211-12623-00 - 2022 Street Program Package 22-R-05\4.0 Tech + Prof Services\4.11 Highways_Bridges\4.11.06 Drawings\03 Working Dwg\Telfer St N_Signage.dwg -tab:TELFER ST N