

0+73.93 CONNECT TO EXIST 150 CI WM W/ COUPLING AND ANODE  
 0+74.93 INSTALL 200-150 REDUCER  
 0+75.93 INSTALL 200-45° BEND  
 0+76.68 INSTALL 200-45° BEND

1+00.00 W ARLINGTON STREET REMOVE EXIST VALVE  
 1+01.50 INSTALL 200 VALVE

1+13.59 INSTALL 200-90° BEND  
 1+14.34 EXIST 150x150x150 TEE

1+18.61 E ARLINGTON STREET

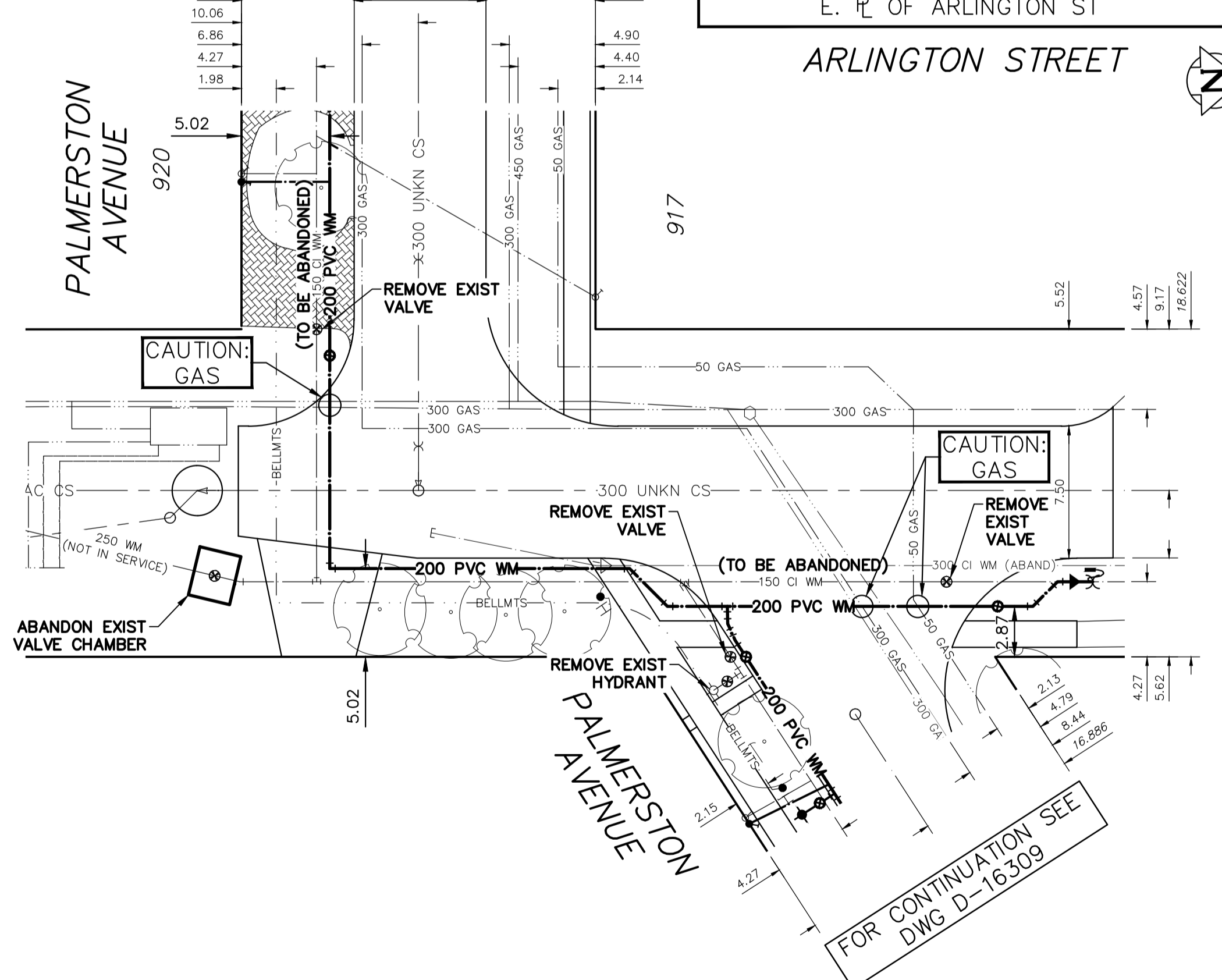
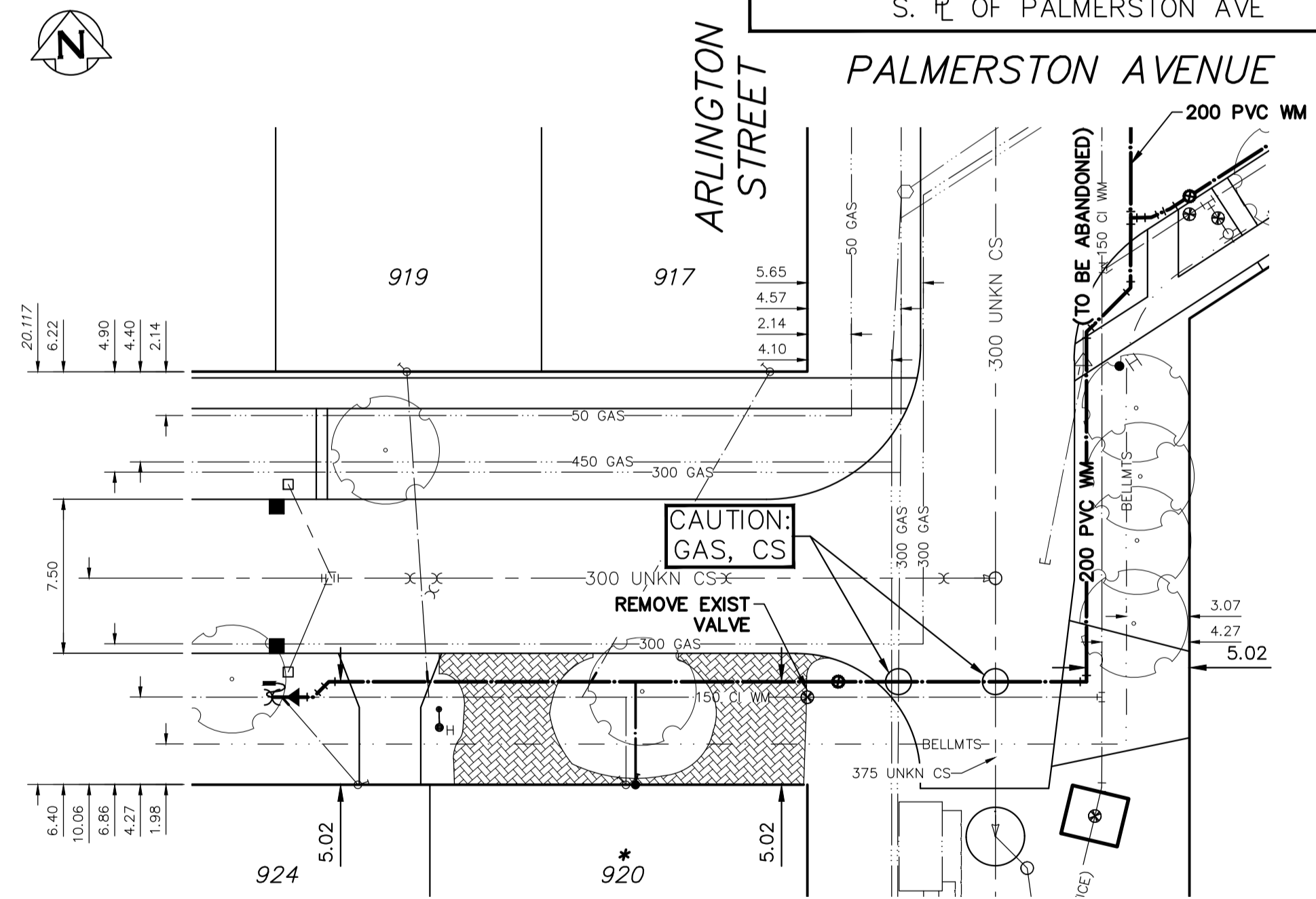
0+77.29 S R PALMERSTON AVENUE (W LEG)  
 0+81.56 EXIST 150x150x150 TEE  
 0+82.31 INSTALL 200-90° BEND

0+97.41 N R PALMERSTON AVENUE (W LEG)  
 0+99.35 INSTALL 200-45° BEND  
 1+00.00 S R PALMERSTON AVENUE (E LEG)  
 1+01.50 INSTALL 200-45° BEND  
 1+02.47 EXIST 150x150x150 TEE  
 1+04.90 INSTALL 200x200x200 TEE

1+17.36 REMOVE EXIST VALVE  
 1+20.26 N R PALMERSTON AVENUE (E LEG) INSTALL 200 VALVE  
 1+22.26 INSTALL 200-45° BEND  
 1+23.68 INSTALL 200-45° BEND  
 1+25.66 INSTALL 200-150 REDUCER  
 1+25.66 CONNECT TO EXIST 150 CI WM W/ COUPLING AND ANODE

NOTE: CHAINAGES SHOWN ARE ALONG S. R. OF PALMERSTON AVE

NOTE: CHAINAGES SHOWN ARE ALONG E. R. OF ARLINGTON ST

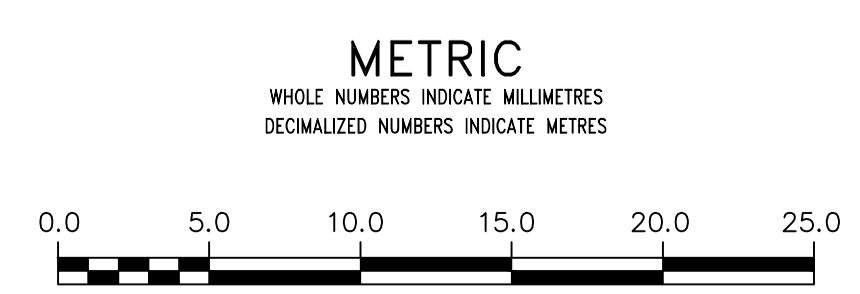


**WATER SERVICE INFORMATION**

ADDRESS	SIZE (mm) MATERIAL (STREET)	SIZE (mm) MATERIAL (PROP.)	SHORT & LONG MEASUREMENT	CORP. LOCATION	REMARKS
917 PALMERSTON AVE RESIDENTIAL	20 CU	20 CU	6' W/EHL UNKN	30' M W OF S/C	RECONNECT SERVICE
919 PALMERSTON AVE RESIDENTIAL	20 CU	20 CU	10.5' EWL HSE 106' EEL EVANSON	3.5' E OF S/C	RECONNECT SERVICE
*920 PALMERSTON AVE RESIDENTIAL	20 LEAD	20 LEAD	15' WEL HSE 29' WWL ARLINGTON	OPP S/C	RENEW SERVICE
924 PALMERSTON AVE RESIDENTIAL	20 CU	12 CU	0.0m BL 3.5m W E LL	UNKN	RECONNECT SERVICE

\*SERVICES TO BE RENEWED TO R. ALL OTHERS TO BE RECONNECTED

NOTE: ALL VALVES TO BE INSTALLED COUNTERCLOCKWISE TO CLOSE



**WARNING**  
 IF POWER EQUIPMENT OR EXPLOSIVES ARE TO BE USED FOR EXCAVATION ON THIS PROJECT THE CONTRACTOR MUST:  
 1) NOTIFY THE GAS COMPANY OF THE PROPOSED LOCATION OF EXCAVATION.  
 2) TAKE PRECAUTION TO AVOID DAMAGE TO GAS COMPANY INSTALLATIONS.  
 SEE PROVINCIAL REGULATION 210/72 FOR DETAILS

**LOCATION APPROVED UNDERGROUND STRUCTURES**  
 SUPV. U/G STRUCTURES COMMITTEE DATE  
 NOTE:  
 LOCATION OF UNDERGROUND STRUCTURES AS SHOWN ARE BASED ON THE BEST INFORMATION AVAILABLE BUT NO GUARANTEE IS GIVEN THAT ALL EXISTING UTILITIES ARE SHOWN OR THAT THE GIVEN LOCATIONS ARE EXACT. CONFIRMATION OF EXISTENCE AND EXACT LOCATION OF ALL SERVICES MUST BE OBTAINED FROM THE INDIVIDUAL UTILITIES BEFORE PROCEEDING WITH CONSTRUCTION.

B.M. ELEV.	NO.	REVISIONS	DATE	BY
	C	ISSUED FOR TENDER	06/04/22	K.G.
	B	DETAILED DESIGN SUBMISSION	01/04/22	K.G.
	A	PRELIMINARY DESIGN SUBMISSION	01/03/22	K.G.

**wsp**  
 1600 Buffalo Place  
 Winnipeg, Manitoba  
 R3T 6B8 Canada  
 Phone: 204-477-6650  
 wsp.com

DESIGNED BY: K.G.  
 CHECKED BY: S.M.  
 DRAWN BY: K.G.  
 APPROVED BY: S.M.  
 RELEASED FOR CONSTRUCTION  
 DATE: 2022 04 06

ENGINEER'S SEAL  
 CONSULTANT DRAWING NUMBER  
 221-01146-00-03

**THE CITY OF WINNIPEG**  
 WATER AND WASTE DEPARTMENT  
 ENGINEERING DIVISION

2022 WATER MAIN RENEWALS - CONTRACT 9

**PALMERSTON AVENUE**  
 26.0M WWL ARLINGTON STREET  
 ARLINGTON STREET

SHEET 03 OF 07  
 CITY DRAWING NUMBER  
 D-16308

**ENGINEERS GEOSCIENTISTS MANITOBA**  
 Certificate of Authorization  
 WSP Canada Inc.  
 No. 5750