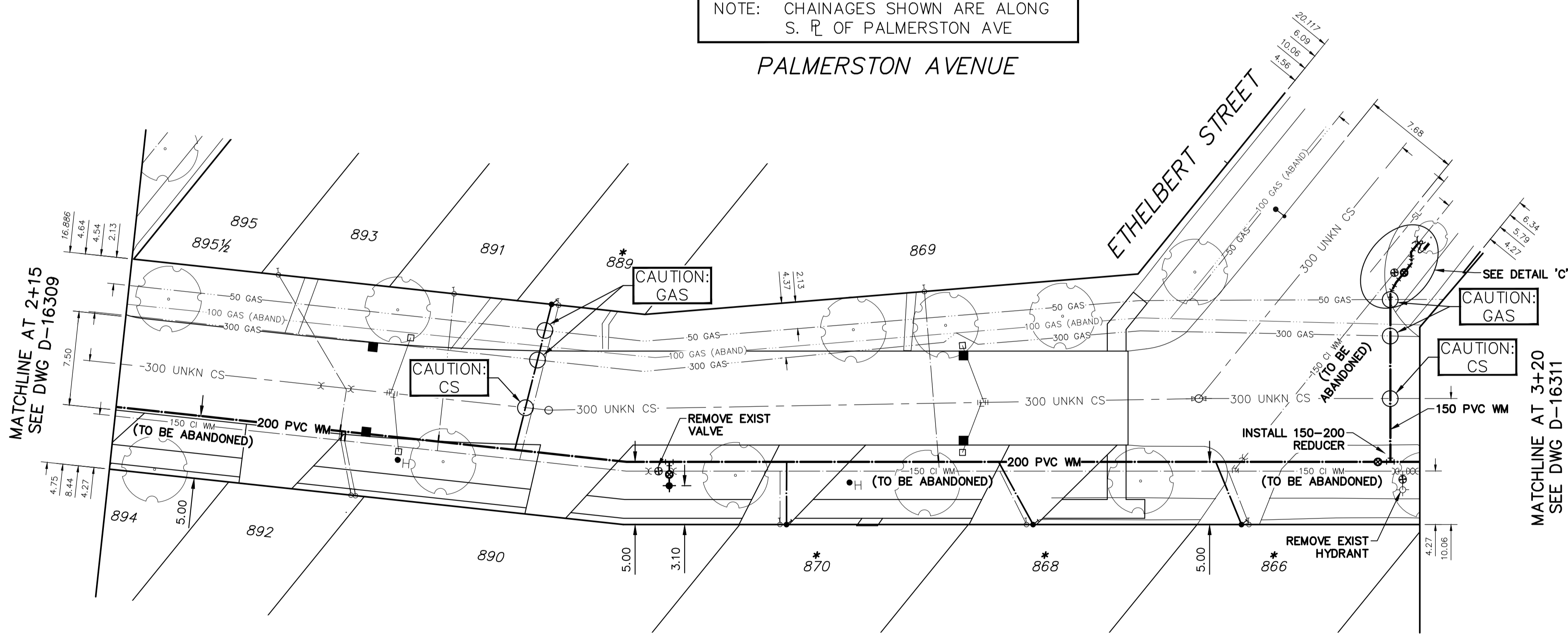


NOTE: CHAINAGES SHOWN ARE ALONG S. R. OF PALMERSTON AVE

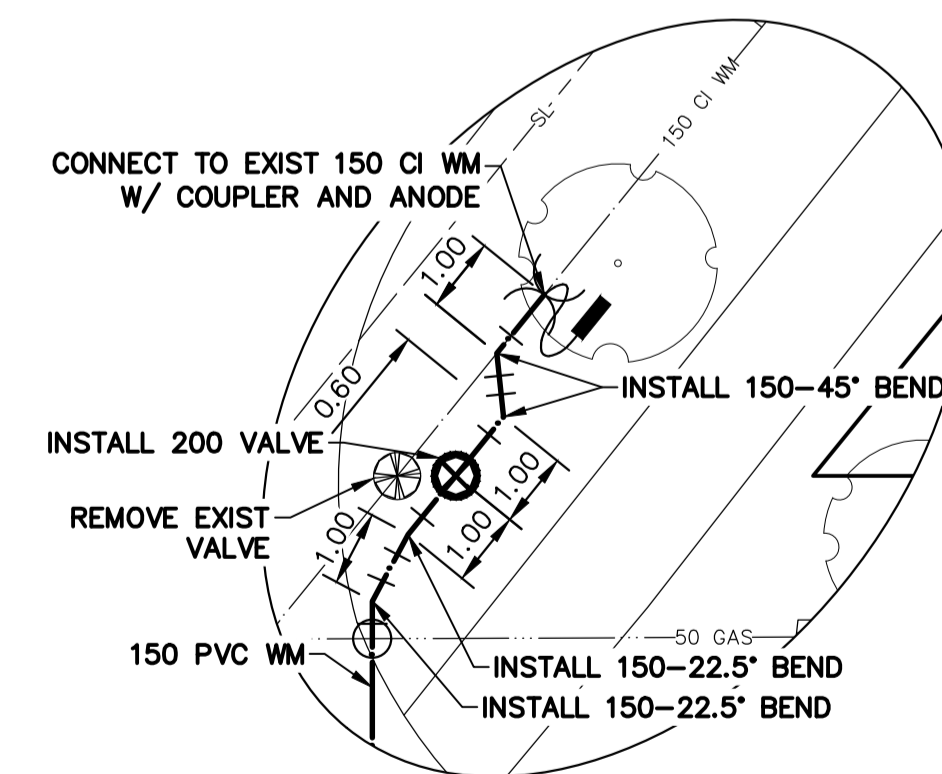
PALMERSTON AVENUE



WATER SERVICE INFORMATION

ADDRESS	SIZE (mm) MATERIAL (STREET)	SIZE (mm) MATERIAL (PROP.)	SHORT & LONG MEASUREMENT	CORP. LOCATION	REMARKS
*866 PALMERSTON AVE RESIDENTIAL	12 LEAD	12 LEAD	2' WWL HSE	10' WEL	RENEW SERVICE
*868 PALMERSTON AVE RESIDENTIAL	12 LEAD	12 LEAD	3' WEL ETHELBERG	9' EWL ETHELBERG	RENEW SERVICE
869 PALMERSTON AVE RESIDENTIAL	20 CU	20 LEAD	18' WEL ETHELBERG	5' E OF S/C	RECONNECT SERVICE
*870 PALMERSTON AVE RESIDENTIAL	12 LEAD	12 LEAD	3' WWL HSE	OPP S/C	RENEW SERVICE
*889 PALMERSTON AVE RESIDENTIAL	12 CU	12 LEAD	42' WWL ETHELBERG	114' EEL HOME	RECONNECT SERVICE
890 PALMERSTON AVE RESIDENTIAL	20 CU	20 CU	5' EWL BASEMENT	6' W OF S/C	RECONNECT SERVICE
891 PALMERSTON AVE RESIDENTIAL	20 CU	20 CU	12" EEL HOME	OPP S/C	RECONNECT SERVICE
892 PALMERSTON AVE RESIDENTIAL	20 CU	20 CU	71' EEL HOME	OPP S/C	RECONNECT SERVICE
893 PALMERSTON AVE RESIDENTIAL	20 CU	20 CU	UNKN	5' W OF S/C	RECONNECT SERVICE
895 PALMERSTON AVE RESIDENTIAL	20 CU	20 CU	3' WEPL	1' E OF S/C	RECONNECT SERVICE
895 PALMERSTON AVE RESIDENTIAL	20 CU	20 CU	48.5' EEL HOME	1' S OF S/C	RECONNECT SERVICE
895 PALMERSTON AVE RESIDENTIAL	20 CU	20 CU	57' NNL PALMERSTON	1' S OF S/C	RECONNECT SERVICE

*SERVICES TO BE RENEWED TO R. ALL OTHERS TO BE RECONNECTED



DETAIL C
SCALE NTS

NOTE: ALL VALVES TO BE INSTALLED COUNTERCLOCKWISE TO CLOSE

METRIC
WHOLE NUMBERS INDICATE MILLIMETRES
DECIMALIZED NUMBERS INDICATE METRES



WARNING
IF POWER EQUIPMENT OR EXPLOSIVES ARE TO BE USED FOR EXCAVATION ON THIS PROJECT THE CONTRACTOR MUST:
1) NOTIFY THE GAS COMPANY OF THE PROPOSED LOCATION OF EXCAVATION.
2) TAKE PRECAUTION TO AVOID DAMAGE TO GAS COMPANY INSTALLATIONS.
SEE PROVINCIAL REGULATION 21072 FOR DETAILS

LOCATION APPROVED
UNDERGROUND STRUCTURES
SUPV. U/G STRUCTURES COMMITTEE DATE
NOTE:
LOCATION OF UNDERGROUND STRUCTURES AS SHOWN ARE BASED ON THE BEST INFORMATION AVAILABLE BUT NO GUARANTEE IS GIVEN THAT ALL EXISTING UTILITIES ARE SHOWN OR THAT THE GIVEN LOCATIONS ARE EXACT. CONFIRMATION OF EXISTENCE AND EXACT LOCATION OF ALL SERVICES MUST BE OBTAINED FROM THE INDIVIDUAL UTILITIES BEFORE PROCEEDING WITH CONSTRUCTION.

B.M. ELEV.	NO.	REVISIONS	DATE	BY
	C	ISSUED FOR TENDER	06/04/22	K.G.
	B	DETAILED DESIGN SUBMISSION	01/04/22	K.G.
	A	PRELIMINARY DESIGN SUBMISSION	01/03/22	K.G.

wsp
1600 Buffalo Place
Winnipeg, Manitoba
R3T 6B8 Canada
Phone: 204-477-6650
wsp.com

DESIGNED BY	K.G.	CHECKED BY	S.M.
DRAWN BY	K.G.	APPROVED BY	S.M.
DATE	2022 04 06	RELEASED FOR CONSTRUCTION	

ENGINEER'S SEAL
CONSULTANT DRAWING NUMBER
221-01146-00-05

Winnipeg
THE CITY OF WINNIPEG
WATER AND WASTE DEPARTMENT
ENGINEERING DIVISION
2022 WATER MAIN RENEWALS - CONTRACT 9
PALMERSTON AVENUE
115.0M EEL ARLINGTON STREET
3.5M WEL ETHELBERG STREET
SHEET 05 OF 07
CITY DRAWING NUMBER
D-16310

ENGINEERS
GEO-SCIENTISTS
MANITOBA
Certificate of Authorization
WSP Canada Inc.
No. 5750