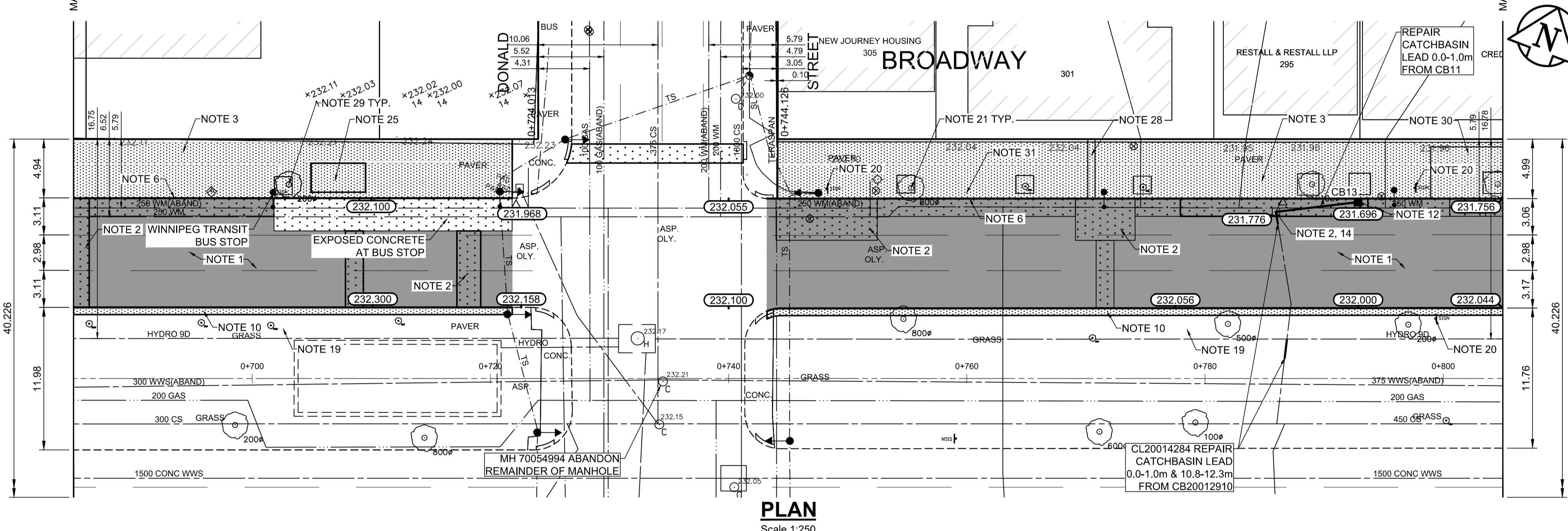


ITEM	RIM ELEV.	Sta	INVERT					CONNECTION	LEAD	FLOW RESTRICTOR
			EAST	WEST	NORTH	SOUTH	V. RISER			
CB13	231.696	0+793		230.496				227.750±	450 CS	

- REFERENCE NOTES**
- PAVEMENT DIMENSIONS ARE TO BACK OF CURB
 - BASELINE IS CENTRELINE OF RIGHT-OF-WAY
 - PROPERTY LINES OBTAINED FROM THE CITY OF WINNIPEG L.B.I.S., AND SCALE FACTOR WAS NOT APPLIED
 - REFER TO AECOM FIELD BOOK NO. 5062 - 5069, 5072
 - CATCH BASIN CONNECTIONS TO SEWER DESIGNED TO MAINTAIN PRE-CONSTRUCTION CAPACITY BY CATCH BASIN LEAD RESTRICTION AS INDICATED ON THE DRAWINGS. ADDITIONAL OR MODIFIED CONNECTIONS TO THE SEWER SYSTEM BEYOND THOSE INDICATED ON THE DRAWINGS REQUIRE REVIEW AND WRITTEN APPROVAL BY THE CONTRACT ADMINISTRATOR

- CONSTRUCTION NOTES**
- PLANE EXISTING ASPHALT AND CONSTRUCT NEW ASPHALTIC PAVEMENT OVERLAY TYPE 1A (AVERAGE THICKNESS 85mm). CONTRACT ADMINISTRATOR TO DETERMINE LOCATIONS FOR INSTALLATION OF PAVEMENT REPAIR FABRIC PRIOR TO ASPHALT PAVING
 - REMOVE EXISTING PAVEMENT AND COMPLETE 200mm PARTIAL SLAB PATCHES AND SLAB REPLACEMENTS AS NOTED. SLAB REPLACEMENTS TO INCLUDE REINFORCEMENT
 - REMOVE EXISTING CONCRETE SIDEWALK AND INSTALL STRUCTURAL SOIL CELLS c/w 2-2" PVC CONDUITS AND 1-2" PVC CONDUIT (SEE CT-20 - CT-24). CONSTRUCT NEW 125mm SIDEWALK WITH BLOCKOUTS c/w PAVING STONES FOR INDICATOR SURFACE. SEE CT-20, CT-21 & CT-22 FOR SIDEWALK AND STREETSCAPING DETAILS
 - PLACE ASPHALT PAVEMENT (TYPE 1A)
 - INSTALL NEW DETECTABLE SURFACE WARNING TILES
 - CONSTRUCT NEW BARRIER CURB (150mm REVEAL, SEPARATE)
 - CONSTRUCT NEW MONOLITHIC CURB RAMP (10mm HT. INTEGRAL)
 - CONSTRUCT NEW MODIFIED BARRIER CURB (180mm HT. INTEGRAL) AS PER SD-203B AT ALL STREET/LANE INTERSECTION RADII
 - CONSTRUCT MONOLITHIC CONCRETE BULLNOSE AS PER SD-227C
 - CONSTRUCT MONOLITHIC CONCRETE SPLASH STRIP AS PER SD-223A
 - ADJUST EXISTING CATCHBASIN / MANHOLE FRAME AND COVER
 - REMOVE EXISTING CURB INLET AND INSTALL CATCHPIT AND CONNECT TO EXISTING CATCHBASIN
 - REPLACE EXISTING CURB INLET AND CONNECT TO EXISTING CATCHBASIN
 - REMOVE EXISTING CURB INLET AND CATCHBASIN. INSTALL NEW CURB INLET AND CATCHBASIN (SD-024, SD-025) AND CONNECT TO EXISTING SEWER SERVICE. SHIFT CATCHBASIN TO BACK OF CURB AND ELIMINATE CURB INLET IF POSSIBLE
 - REMOVE AND REPLACE EXISTING CATCHBASIN (SD-024, SD-025), AND CONNECT TO EXISTING SEWER SERVICE. SHIFT CATCHBASIN TO BACK OF CURB
 - INSTALL CATCHPIT c/w 10m OF 150mm SOLID DISTRIBUTION PIPE DRAINING INTO SILVA CELL (TYP.)
 - ADJUST EXISTING WATERMAIN VALVE BOX TO GRADE
 - ADJUST UTILITY MANHOLE FRAME, REINFORCE ISOLATION WITH 15M BARS FOR ISOLATIONS IN ROADWAYS AND 10M BARS FOR ISOLATIONS IN SIDEWALK
 - INSTALL NEW SOD
 - PROTECT EXISTING SIGN AND BASE DURING CONSTRUCTION, CONSTRUCT OPENING IN CONCRETE SIDEWALK AND PLACE CRUSH GRANITE
 - INSTALL BIKE RACK
 - REMOVE/STOCKPILE EXISTING BIKE RACK AND REINSTALL AFTER CONSTRUCTION
 - REMOVE/STOCKPILE EXISTING BENCH AND REINSTALL AFTER CONSTRUCTION
 - INSTALL WINNIPEG TRANSIT FLAGPOLE BOLT TEMPLATE AND INSTALL INFRASTRUCTURE AND CONNECTION TO POWER SOURCE FOR 8x15 HEATED BUS SHELTER. POWER SOURCE TO BE INSTALLED AS PER INCLUDED SKETCHES IN TENDER APPENDIX. BUS SHELTER INSTALLED BY OTHERS
 - STREET LIGHTING TO BE REMOVED AND REPLACED IN ACCORDANCE WITH MANITOBA HYDRO DRAWING PACKAGE 1-0407-DE-50000-0453. ALL SALVAGING OR WORK ON JOINT USE POLES MUST BE COORDINATED WITH TRAFFIC SIGNALS
 - ALL TRAFFIC SIGNALS WORK TO BE COMPLETED BY OTHERS
 - COMPLETE HYDRO EXCAVATION EXPLORATION ACROSS FULL WIDTH OF SIDEWALK TO PLANNED DEPTH OF SOIL CELL TO CONFIRM PRESENCE OF ANY UTILITIES
 - REMOVAL OF EXISTING TREES (BY OTHERS). PROTECT ANY TREES NOT REMOVED DURING CONSTRUCTION. REMOVE EXISTING TREE GUARD AND TREE GRATES. RETURN MATERIALS TO CITY YARD
 - PROTECT EXISTING SOIL CELLS DURING CONSTRUCTION. CONSTRUCTED THICKENED EDGE CONCRETE SIDEWALK AROUND EXISTING TREE OPENINGS AS PER SECTION AA ON CT-26
 - TRANSIT STOP TO BE DISCONTINUED AT END OF PROJECT. CONTRACTOR TO REMOVE SHELTER PAD AND DISCONNECT POWER. SHELTER AND SIGN REMOVAL BY OTHERS



ENGINEERS GEOSCIENTISTS MANITOBA
 Certificate of Authorization
 AECOM Canada Ltd.
 No. 4671 Date: 2023/12/15

METRIC
 WHOLE NUMBERS INDICATE MILLIMETRES
 DECIMALIZED NUMBERS INDICATE METRES

EXISTING	LEGEND - PLAN	PROPOSED	EXISTING	LEGEND - PLAN	PROPOSED	EXISTING	LEGEND - PROFILE	PROPOSED
150 mm W.M.	WATERMAIN	150 mm W.M.	HYDRO	M.T.S.	— x —	— x —	PROFILE	— x —
300mm L.D.S.	LAND DRAINAGE SEWER	300mm L.D.S.	CONCRETE	ASPHALT	— · — · —	— · — · —	SOUTH GUTTER	— · — · —
250mm W.W.S.	WASTEWATER SEWER	250mm W.W.S.	PROPERTY LINE	SURVEY BAR	— + —	— + —	NORTH GUTTER	— + —
○	MANHOLE	●	ELEVATION	(35.750)	— () —	— () —	N/W PROPERTY LINE	— () —
□	CATCH BASIN	■	TREE	SIDEWALK RAMP	— / —	— / —	S/E PROPERTY LINE	— / —
▽	CATCH PIT	▼	CONCRETE SIDEWALK	FENCE	— ▬ —	— ▬ —		
⊥	TRAFFIC SIGNAL POLE	⊥						
⊥	STREET LIGHT	⊥						
⊥	GAS	⊥						

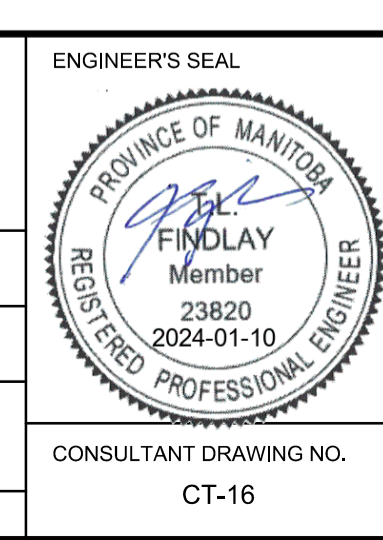
LOCATION APPROVED UNDERGROUND STRUCTURES

SUPV. UG STRUCTURES COMMITTEE DATE

NOTE:
 LOCATION OF UNDERGROUND STRUCTURES AS SHOWN ARE BASED ON THE BEST INFORMATION AVAILABLE, BUT NO GUARANTEE IS GIVEN THAT ALL EXISTING UTILITIES ARE SHOWN OR THAT THE GIVEN LOCATIONS ARE EXACT. CONFIRMATION OF EXISTENCE AND EXACT LOCATION OF ALL SERVICES MUST BE OBTAINED FROM THE INDIVIDUAL UTILITIES BEFORE PROCEEDING WITH CONSTRUCTION.

NO.	REVISIONS	DATE	BY
1	ISSUED FOR ADDENDUM	2024/01/05	TLF
0	ISSUED FOR TENDER	2023/12/15	TLF

B.M. tbn	South East Corner of Smith Avenue & Broadway, property line, top of 1" x 1" iron bar	ELEV. 231.963
DESIGNED BY	SF	CHECKED BY BC
DRAWN BY	RAM	APPROVED BY TLF
HOR. SCALE:	1:250	RELEASED FOR CONSTRUCTION BY:
VERTICAL:	1:10	DATE
DATE	2023/06/23	DATE



THE CITY OF WINNIPEG
 PUBLIC WORKS DEPARTMENT
 ENGINEERING DIVISION

DOWNTOWN PAVEMENT RENEWALS PROJECT
 2024 PAVEMENT RENEWALS: WESTBOUND BROADWAY

PLAN/PROFILE GRADING PLAN
 BROADWAY WESTBOUND
 STATION 0+685 TO STATION 0+805

CITY DRAWING NUMBER P-3573-16
 SHEET 16 OF 28

CONSULTANT DRAWING NO. CT-16