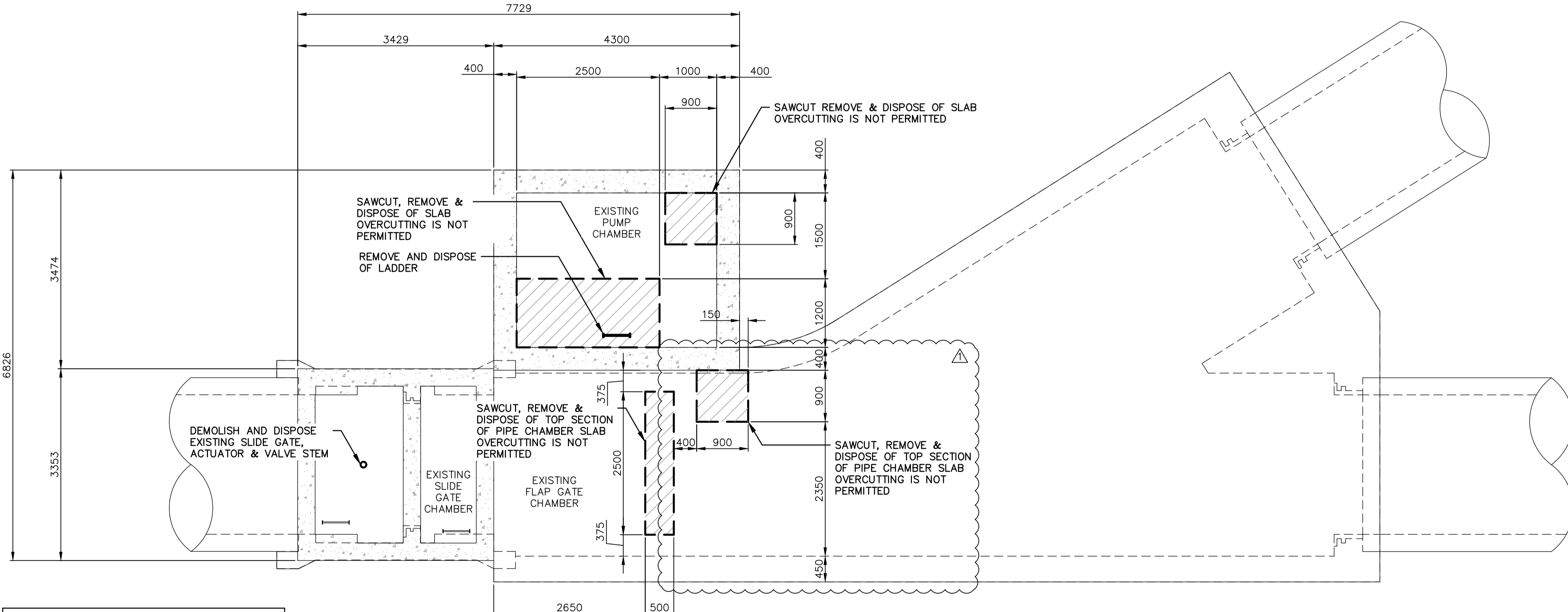
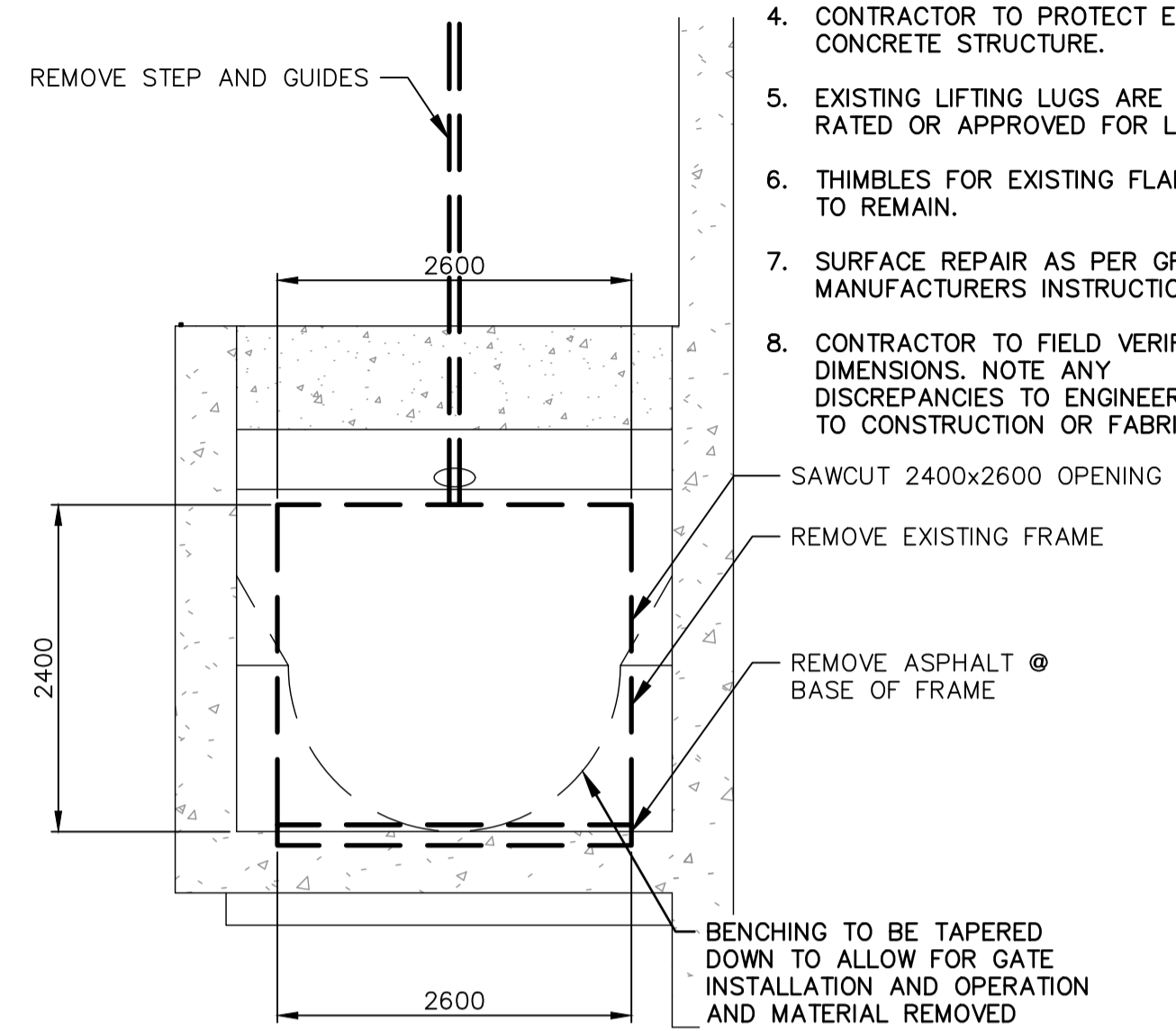


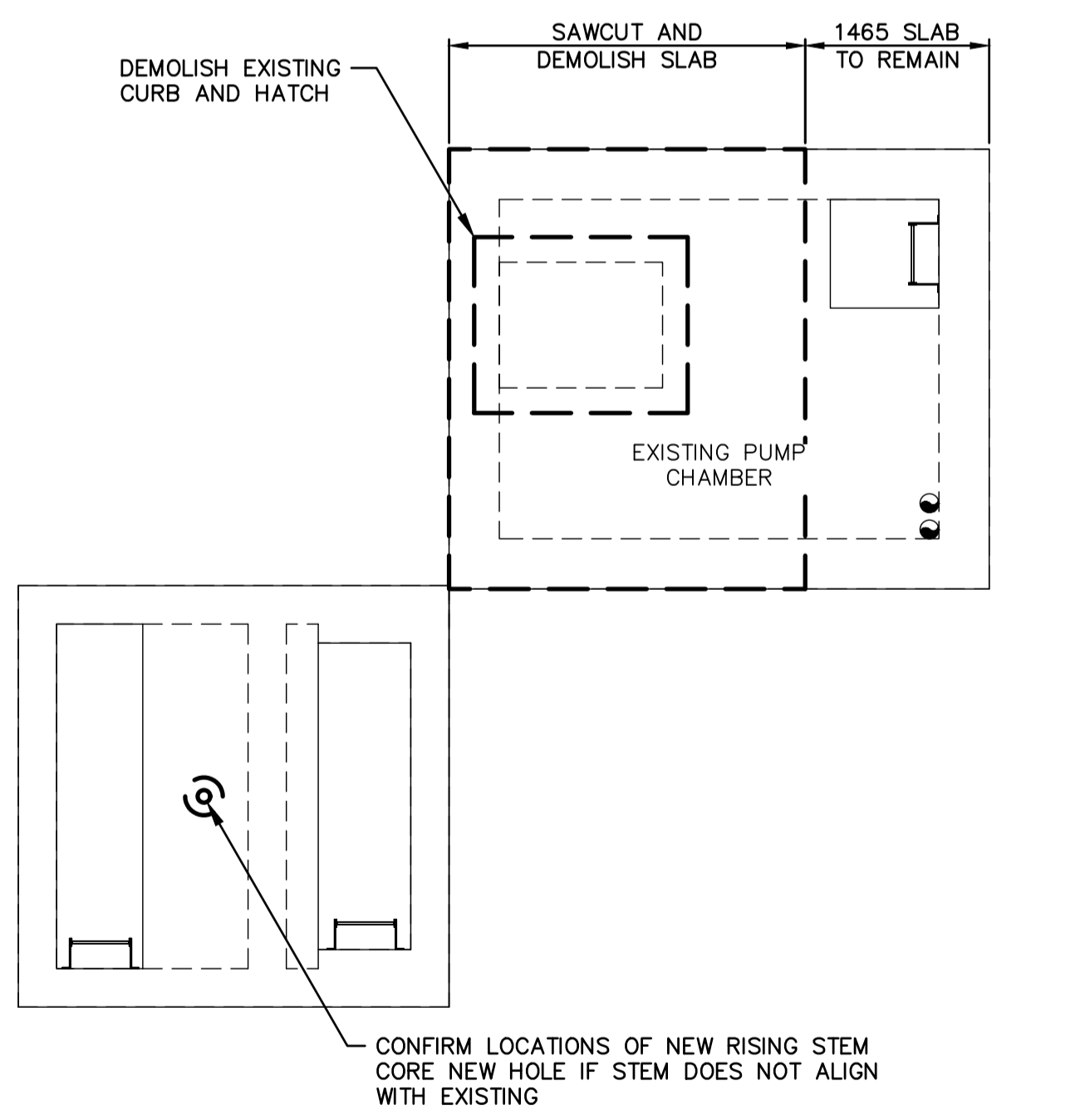
LOWER LEVEL PLAN (EL. 225.355)
SCALE: 1:50



MID-LEVEL PLAN (EL. 229.844)
SCALE: 1:50



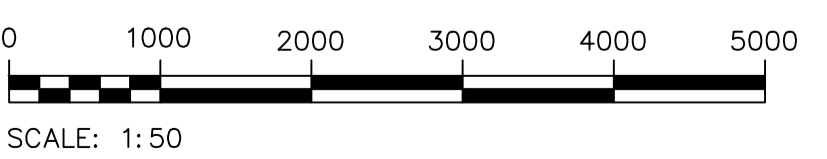
SECTION A
SCALE: 1:50



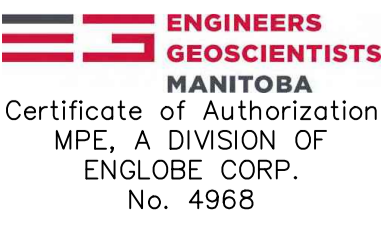
UPPER LEVEL PLAN (EL. 233.953)
SCALE: 1:50

THE INFORMATION CONTAINED IN THESE DRAWINGS SHALL BE ORIENTED IN THE SAME DATUM AS THE GIS, NAD 1983 JUNE 1990.

10		
9		
8		
7		
6		
5		
4		
3		
2		
1		
NO.	DRAWING NUMBER	REFERENCE DRAWING TITLE
REFERENCE DRAWINGS		



METRIC
WHOLE NUMBERS INDICATE MILLIMETRES
DECIMALIZED NUMBERS INDICATE METRES
UNLESS OTHERWISE NOTED



Certificate of Authorization
MPE, A DIVISION OF
ENGLUBE CORP.
No. 4968

B.M.	ELEV.			
NO.	REVISIONS	DATE	BY	
1	ISSUED FOR ADDENDUM 03	2024.04.02		
0	ISSUED FOR DEMOLITION	2024.03.18		

MPE
a division of Englobe

DESIGNED BY: M. BAKER
CHECKED BY: [Signature]
DRAWN BY: D. MCMILLAN
APPROVED BY: [Signature]
SCALE: HORIZONTAL AS SHOWN
VERTICAL: AS SHOWN
DATE: 2024-04-02

PROVINCE OF MANITOBA
REGISTERED PROFESSIONAL ENGINEER
M.J. BAKER
Member
43540
APRIL 3, 2024
CONSULTANT DRAWING NUMBER

THE CITY OF WINNIPEG
WATER AND WASTE DEPARTMENT
ENGINEERING DIVISION
Winnipeg

RENREW OUTFALL GATE CHAMBER
2024 UPGRADES
STRUCTURAL DEMOLITION PLAN

CITY DRAWING NUMBER 1-0240G-S001-001-R1 SHEET 4 OF 41

- NOTES:
- ALL ELEVATIONS ARE IN METERS AND ALL DIMENSIONS ARE IN MILLIMETRES UNLESS NOTED OTHERWISE.
 - FOR CONSTRUCTION OF VAULT EXCAVATE & DISPOSE OF EXCESS SOIL OVER CHAMBER.
 - CONTRACTOR TO SAWCUT CONCRETE AND REMOVE F-THIMBLE.
 - CONTRACTOR TO PROTECT EXISTING CONCRETE STRUCTURE.
 - EXISTING LIFTING LUGS ARE NOT RATED OR APPROVED FOR LOADING.
 - THIMBLES FOR EXISTING FLAP GATES TO REMAIN.
 - SURFACE REPAIR AS PER GROUT MANUFACTURERS INSTRUCTIONS.
 - CONTRACTOR TO FIELD VERIFY ALL DIMENSIONS. NOTE ANY DISCREPANCIES TO ENGINEER PRIOR TO CONSTRUCTION OR FABRICATION.