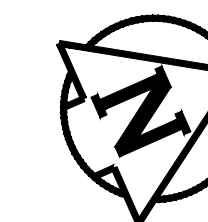


- 75mm TYPE MS1 ASPHALT (SINGLE LIFT)
- 125mm 20mm GRANULAR A BASE COURSE MATERIAL
- CLASS B GEOGRID
- 150mm 50mm GRANULAR A SUB-BASE MATERIAL
- GEOTEXTILE FABRIC - SEPARATION/FILTRATION
- COMPACTED SUBGRADE

ASPHALT PAVEMENT - CROSS SECTION "A"
N.T.S



CONSTRUCTION NOTES

1. REMOVE EXISTING PAVEMENT AND CONSTRUCT NEW 75mm ASPHALT PAVEMENT AS PER CROSS SECTION "A"
2. CONSTRUCT NEW ACCESSIBLE BENCH NODE (SCD-136A, E25)
3. REMOVE EXISTING AND INSTALL NEW BENCH ON NEW ACCESSIBLE BENCH NODE (SCD-121A, SCD-136A, E25)
4. REMOVE AND RE-INSTALL EXISTING BENCH ON NEW ACCESSIBLE BENCH NODE (SCD-121A, SCD-136A, E25)
5. RENEW EXISTING CONCRETE SIDEWALK (SD-228A, E24)
6. RENEW EXISTING CURB RAMP (SD-229D)
7. REMOVE AND DISPOSE OF EXISTING PARK BENCH

GENERAL NOTES

- A. PAVEMENT DIMENSIONS ARE TO BACK OF CURB
- B. ALL CURB RADIUS UNDER 15.0m SHALL BE MODIFIED (SD-203B)
- C. CURB REPLACEMENT AS DIRECTED BY CONTRACT ADMINISTRATOR
- D. CONTRACTOR TO CONFIRM THE LOCATION OF ALL UTILITIES/SERVICES IN THE FIELD PRIOR TO CONSTRUCTION
- E. ADJUST ALL EXISTING WATER VALVES AND CURB STOPS TO GRADE
- F. PAVEMENT REPAIRS SHOWN ARE A REPRESENTATIVE SAMPLE OF THE TENDER QUANTITIES
- G. ASPHALT TIE-INS ON APPROACHES TO BE DETERMINED IN FIELD BY THE CONTRACT ADMINISTRATOR

ISSUED FOR TENDER

NOT TO BE USED FOR CONSTRUCTION

METRIC

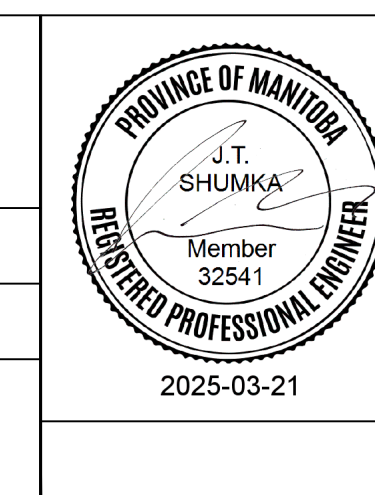
WHOLE NUMBERS INDICATE MILLIMETERS
DECIMALIZED NUMBERS INDICATE METERS

TENDER NO. 13-2025

---	LDS/WWS	---	---	---	---
---	WATERMAIN	---	---	---	---
---	GAS	---	---	---	---
---	TRAFFIC SIGNALS	---	---	---	---
---	HYDRO/STREET LIGHT	---	---	---	---
---	MTS/SHAW/TELUS	---	---	---	---
---	CURB RENEWAL	---	---	---	---
---	PROPERTY LINE	---	---	---	---
---	CONCRETE SIDEWALK	---	---	---	---
---	ASPHALT	---	---	---	---
---	SHURBS	---	---	---	---
---	CULVERT	---	---	---	---
---	FLOW ARROW	---	---	---	---
---	EXISTING	---	---	---	---
---	LEGEND - PLAN	---	---	---	---
---	PROPOSED	---	---	---	---
---	HYDRANT	---	---	---	---
---	VALVE	---	---	---	---
---	MANHOLE	---	---	---	---
---	CATCH BASIN	---	---	---	---
---	CATCH PIT/CURB INLET	---	---	---	---
---	HYDRO POLE	---	---	---	---
---	LIGHT STANDARD	---	---	---	---
---	SURVEY BAR	---	---	---	---
---	RAMP CURB	---	---	---	---
---	ELEVATIONS	---	---	---	---
---	TREE	---	---	---	---
---	EXISTING	---	---	---	---
---	LEGEND - PLAN	---	---	---	---
---	PROPOSED	---	---	---	---

LOCATION APPROVED UNDERGROUND STRUCTURES		B.M. IP AT NORTH CORNER OF PARK ELEV. 230.462
SUPR. LIG STRUCTURES	DATE	
COMMITTEE		
NOTE: LOCATION OF UNDERGROUND STRUCTURES AS SHOWN ARE BASED ON THE BEST INFORMATION AVAILABLE. BUT NO GUARANTEE IS GIVEN THAT ALL EXISTING UTILITIES ARE SHOWN OR THAT THE GIVEN LOCATIONS ARE EXACT. CONFIRMATION OF EXISTENCE AND EXACT LOCATION OF ALL SERVICES MUST BE OBTAINED FROM THE INDIVIDUAL UTILITIES BEFORE PROCEEDING WITH CONSTRUCTION.		
3.	ADDENDUM 1	2025/03/24 J.W.
2.	SUBMIT FOR TENDER	2025/03/13 J.W.
1.	SUBMIT FOR PLAN APPROVAL	2025/02/07 J.W.
NO.	REVISIONS	DATE BY

ENGINEERING DIVISION TECHNOLOGY SERVICES BRANCH 106 - 1155 PACIFIC AVE	
DESIGNED BY J.W.	CHECKED BY A.K., E.H., R.W.
DRAWN BY J.W.	APPROVED BY J.T.S.
HOR. SCALE: 1 : 250	VERTICAL: 1 : 10
DATE 2025/03/19	



THE CITY OF WINNIPEG
PUBLIC WORKS DEPARTMENT

CAREY PARK
FROM ELM PARK ROAD TO KINGSTON ROW
NEW ASPHALT PATHWAY AND ASSOCIATED WORKS
FROM STA. 1+00 TO STA. 2+20

CITY DRAWING NUMBER SE-25-508
SHEET 9 OF 25
1