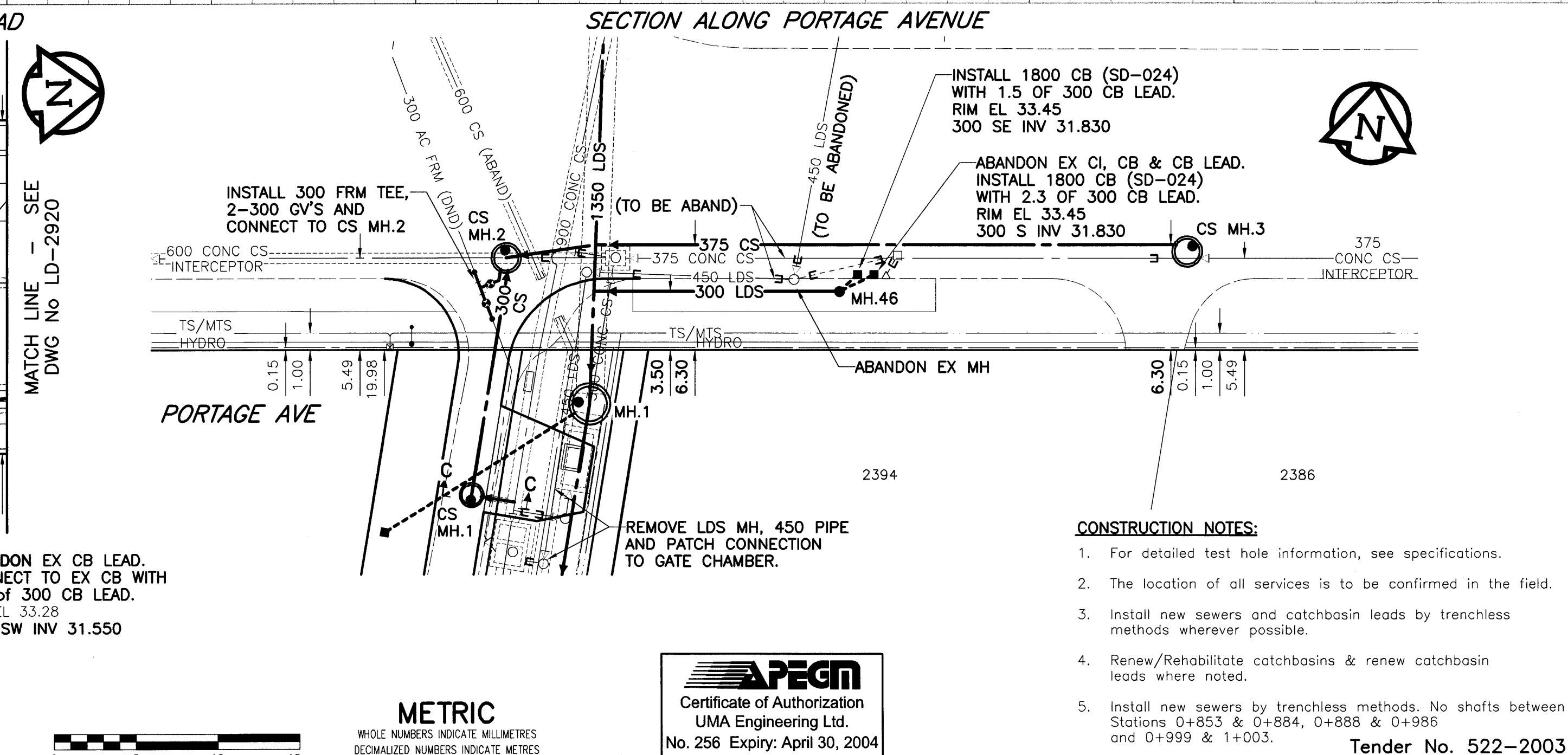
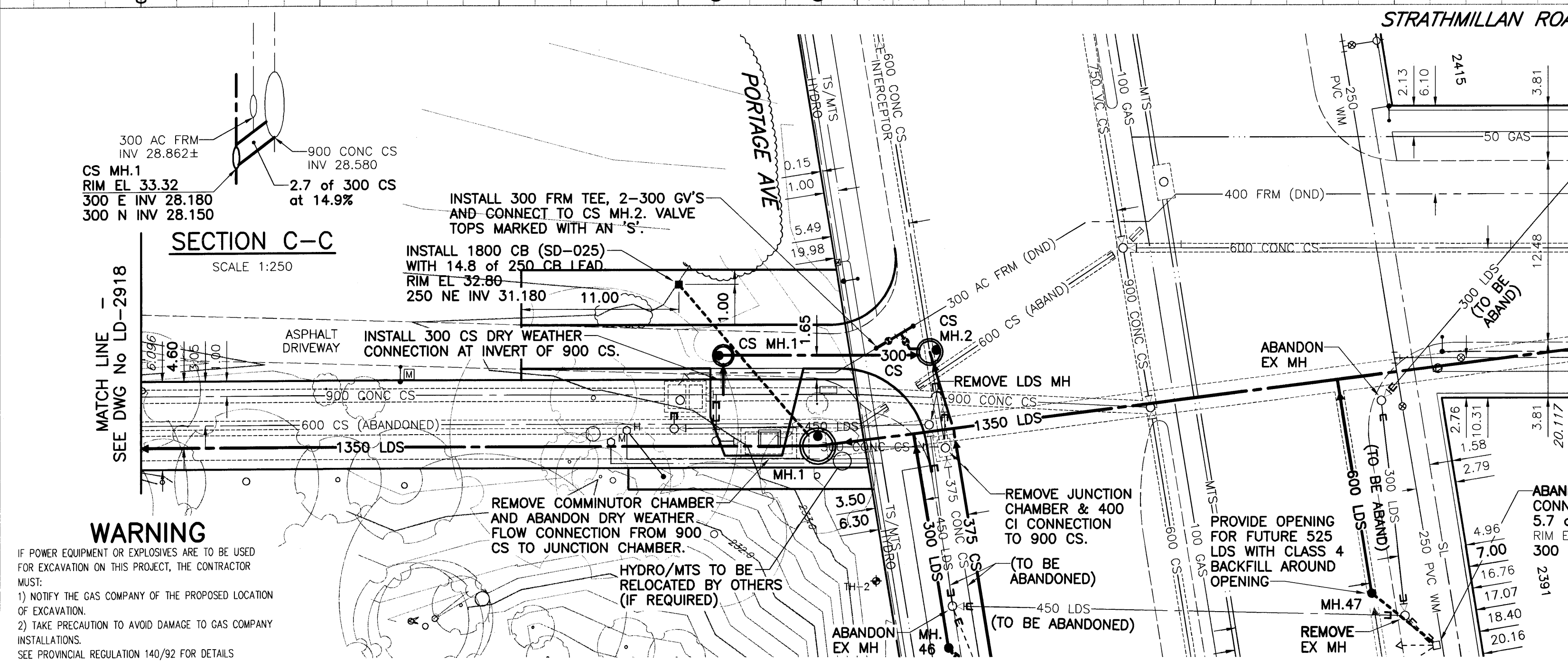
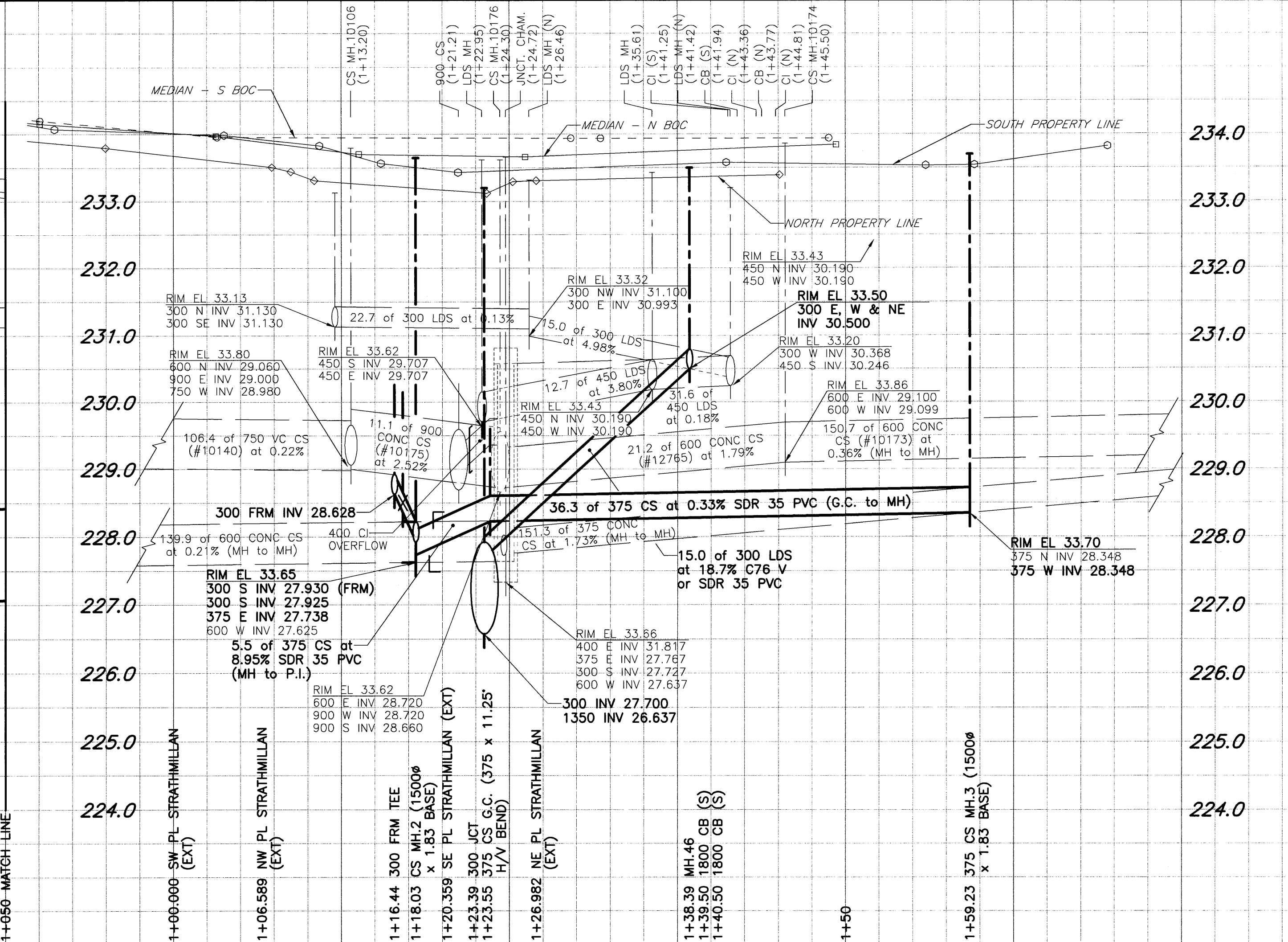
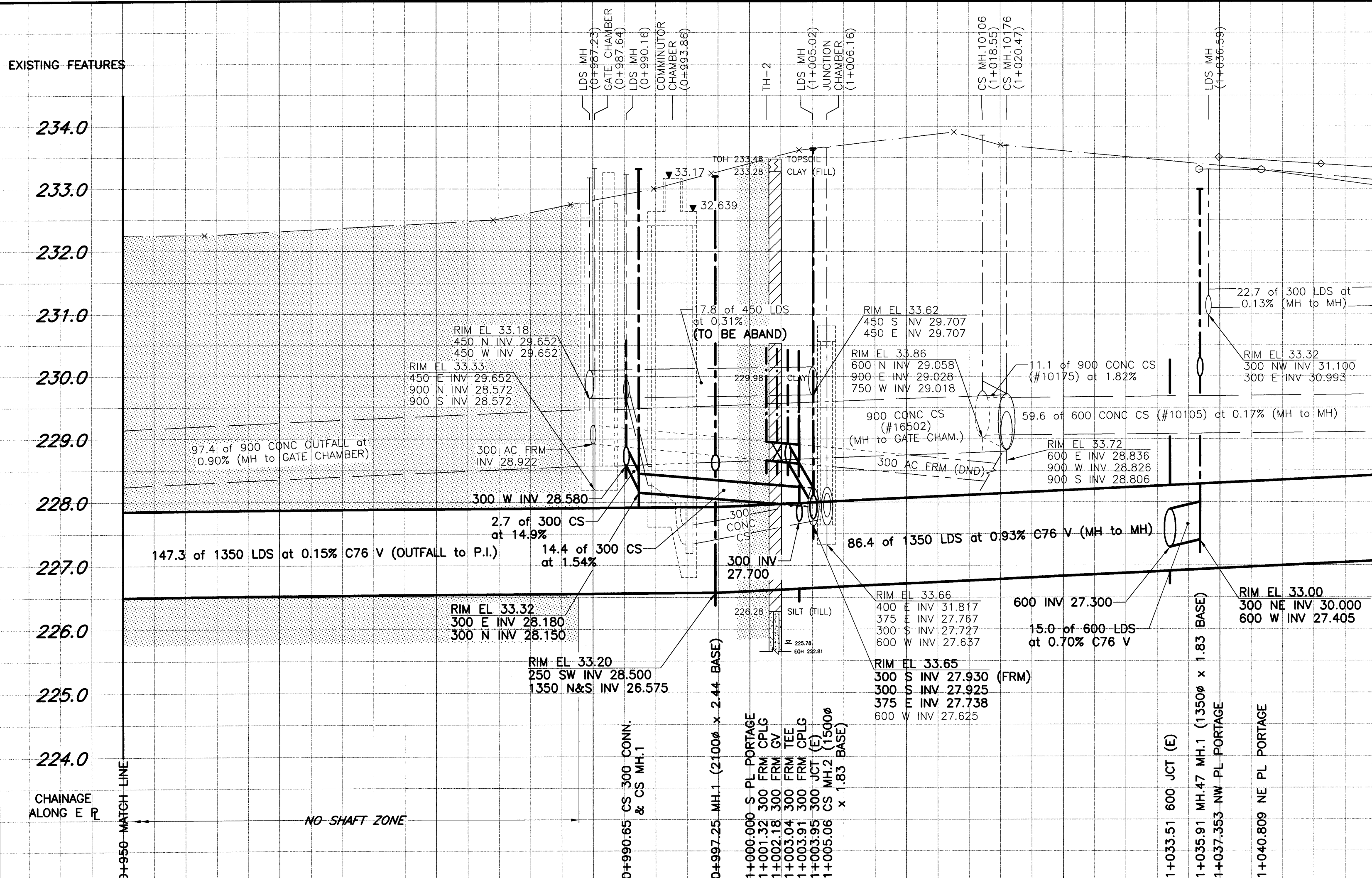


D SIZE 22" x 34" (558mm x 863mm)
 PLOT SCALE: 1:0.25
 FILE: STRATHMILLAN - DWG 2004-01-08 09:24am ADL



150 mm WM		150 mm WM		150 mm WM		150 mm WM	
○	WATERMAIN	○	HYDRO	○	WATERMAIN	○	WATERMAIN
○	HYDRANT	○	MTS	○	HYDRANT	○	HYDRANT
○	VALVE	○	GAS	○	VALVE	○	VALVE
○	LAND DRAINAGE SEWER	○	CONCRETE	○	LAND DRAINAGE SEWER	○	LAND DRAINAGE SEWER
○	WASTE WATER SEWER	○	ASPHALT	○	WASTE WATER SEWER	○	WASTE WATER SEWER
○	MANHOLE	○	CURB STOP	○	MANHOLE	○	MANHOLE
○	CATCH BASIN	○	REDUCER	○	CATCH BASIN	○	CATCH BASIN
○	CURB INLET	○	COUPLING	○	CURB INLET	○	CURB INLET
○	CULVERT	○	ANODE	○	CULVERT	○	CULVERT
○	SURVEY BAR	○	WM MONITORING STATION	○	SURVEY BAR	○	SURVEY BAR
○	PIPE ABANDONMENTS	○		○	PIPE ABANDONMENTS	○	PIPE ABANDONMENTS
○	EXISTING	○	LEGEND - PLAN	○	EXISTING	○	LEGEND - PLAN
○	PROPOSED	○	LEGEND - PROFILE	○	PROPOSED	○	LEGEND - PROFILE

WARNING
 IF POWER EQUIPMENT OR EXPLOSIVES ARE TO BE USED FOR EXCAVATION ON THIS PROJECT, THE CONTRACTOR MUST:
 1) NOTIFY THE GAS COMPANY OF THE PROPOSED LOCATION OF EXCAVATION.
 2) TAKE PRECAUTION TO AVOID DAMAGE TO GAS COMPANY INSTALLATIONS.
 SEE PROVINCIAL REGULATION 140/92 FOR DETAILS

CONSTRUCTION NOTES:
 1. For detailed test hole information, see specifications.
 2. The location of all services is to be confirmed in the field.
 3. Install new sewers and catchbasin leads by trenchless methods wherever possible.
 4. Renew/Rehabilitate catchbasins & renew catchbasin leads where noted.
 5. Install new sewers by trenchless methods. No shafts between Stations 0+853 & 0+884, 0+888 & 0+986 and 0+999 & 1+003.

UMA Engineering Ltd.
 Certificate of Authorization
 UMA Engineering Ltd.
 No. 256 Expiry: April 30, 2004

METRIC
 WHOLE NUMBERS INDICATE MILLIMETRES
 DECIMALIZED NUMBERS INDICATE METRES

UMA Engineering Ltd.
 Consulting • Engineering • Construction • Management Services

DESIGNED BY: FMI
 CHECKED BY: B. Morton
 DRAWN BY: ADL
 APPROVED BY: *[Signature]*
 HOR. SCALE: 1:250
 VERTICAL: 1:50
 RELEASED FOR CONSTRUCTION: *[Signature]*
 DATE: 04/10/04

PROFESSIONAL'S SEAL
 B. MORTON
 REGISTERED PROFESSIONAL ENGINEER
 CONSULTANT DRAWING NO. 02
 D265-096-03

THE CITY OF WINNIPEG
 WATER AND WASTE DEPARTMENT

STRATHMILLAN/MOORGATE COMBINED SEWER RELIEF CONTRACT 4

STRATHMILLAN ROAD
 50m S of PORTAGE AVE.
 to 9m N of PORTAGE AVE.

SHEET 2 OF 8
 CITY DRAWING NUMBER LD-2919
 REV