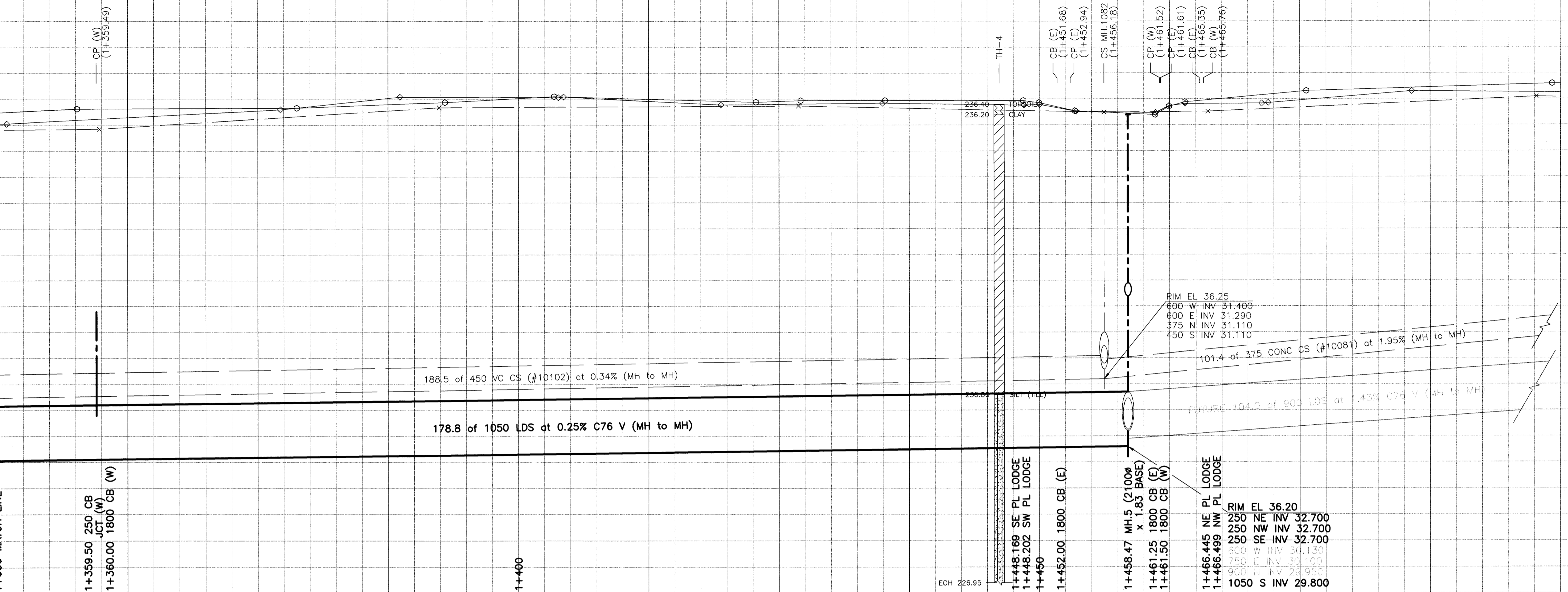


D. SIZE 22" x 34" (558mm x 863mm)

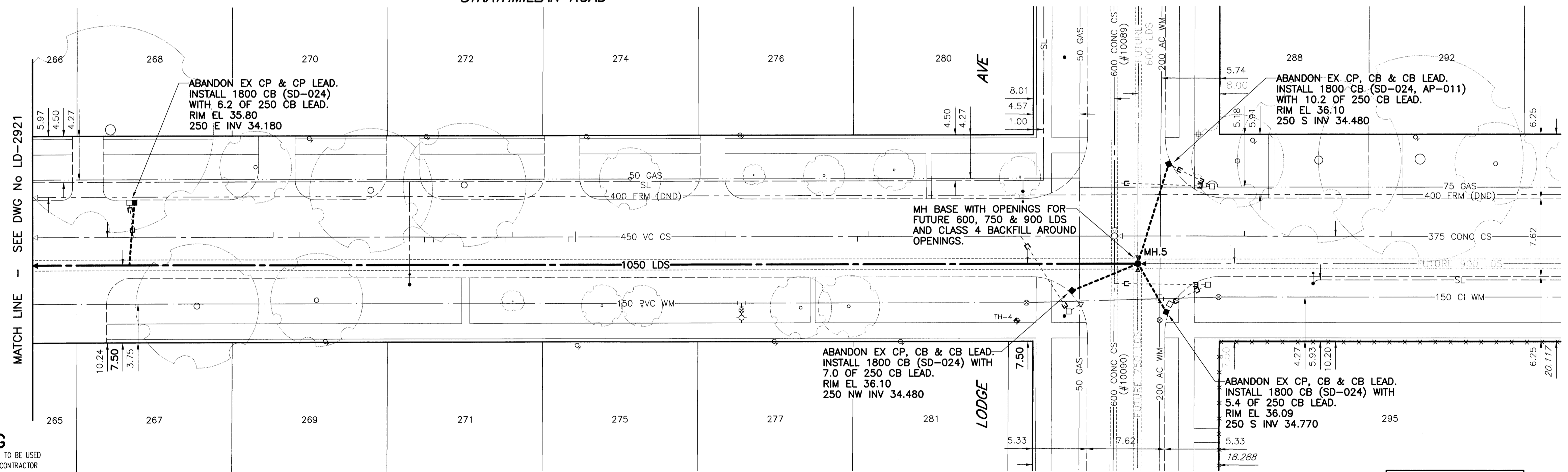
EXISTING FEATURES
 237.0
 236.0
 235.0
 234.0
 233.0
 232.0
 231.0
 230.0
 229.0
 228.0
 CHAINAGE ALONG E.P.

237.0
 236.0
 235.0
 234.0
 233.0
 232.0
 231.0
 230.0
 229.0
 228.0



LIMIT OF CONTRACT 4 ← → CONTRACT 5

STRATHMILLAN ROAD



WARNING
 IF POWER EQUIPMENT OR EXPLOSIVES ARE TO BE USED FOR EXCAVATION ON THIS PROJECT, THE CONTRACTOR MUST:
 1) NOTIFY THE GAS COMPANY OF THE PROPOSED LOCATION OF EXCAVATION.
 2) TAKE PRECAUTION TO AVOID DAMAGE TO GAS COMPANY INSTALLATIONS.
 SEE PROVINCIAL REGULATION 140/92 FOR DETAILS.

- CONSTRUCTION NOTES:**
- For detailed test hole information, see specifications.
 - The location of all services is to be confirmed in the field.
 - Install new sewers and catchbasin leads by trenchless methods wherever possible.
 - Renew/Rehabilitate catchbasins & renew catchbasin leads where noted.

Tender No. 522-2003

EXISTING	LEGEND - PLAN	PROPOSED	EXISTING	LEGEND - PLAN	PROPOSED	EXISTING	LEGEND - PROFILE	PROPOSED
150 mm WM	WATERMAIN	150 mm WM	HYDRO	MTS	150 mm WM	WATERMAIN	HYDRANT	
Hydrant symbol	HYDRANT	Valve symbol	GAS	CONCRETE	300 mm LDS	LAND DRAINAGE SEWER	Valve symbol	
Valve symbol	VALVE	Manhole symbol	ASPHALT	CURB STOP	250 mm WWS	WASTE WATER SEWER	Profile symbol	
300 mm LDS	LAND DRAINAGE SEWER	Catch basin symbol	MANHOLE	REDUCER	Profile symbol	NORTH/WEST		
250 mm WWS	WASTE WATER SEWER	Curb inlet symbol	CATCH BASIN	COUPLING	Profile symbol	SOUTH/EAST		
Manhole symbol	MANHOLE	Culvert symbol	CURB INLET	ANODE	Profile symbol	LAMP STANDARD		
Catch basin symbol	CATCH BASIN	Survey bar symbol	CULVERT	WM MONITORING STATION	Profile symbol	TREE		
Curb inlet symbol	CURB INLET	Pipe abandonment symbol	SURVEY BAR					
Culvert symbol	CULVERT		PIPE ABANDONMENTS					
Survey bar symbol	SURVEY BAR							
Pipe abandonment symbol	PIPE ABANDONMENTS							

LOCATION APPROVED UNDERGROUND STRUCTURES

DATE: _____

NOTE: LOCATION OF UNDERGROUND STRUCTURES AS SHOWN ARE BASED ON THE BEST INFORMATION AVAILABLE. BUT NO GUARANTEE IS GIVEN THAT ALL EXISTING UTILITIES ARE SHOWN OR THAT THE GIVEN LOCATIONS ARE EXACT. CONFIRMATION OF EXISTENCE AND EXACT LOCATION OF ALL SERVICES MUST BE OBTAINED FROM THE INDIVIDUAL UTILITIES BEFORE PROCEEDING WITH CONSTRUCTION.

B.M. 39-058
 ELEV. 236.271m
 S.E. Cor. Strathmillan Rd. & Lodge Ave.
 Tilt. on top of 0.05m dia. x 2.4m iron
 pipe 3.7m N. of S.L. of Lodge Ave. & on
 E.L. of Strathmillan Rd.

UMA Engineering Ltd.
 Consulting • Engineering • Construction • Management Services

DESIGNED BY: FMI
 CHECKED BY: B. Morton
 DRAWN BY: ADL
 APPROVED BY: [Signature]
 HOR. SCALE: 1:250
 VERTICAL: 1:50
 RELEASED FOR CONSTRUCTION: [Signature]
 DATE: 01/01/04

APEGM
 Certificate of Authorization
 UMA Engineering Ltd.
 No. 256 Expiry: April 30, 2004

THE CITY OF WINNIPEG
 Winnipeg WATER AND WASTE DEPARTMENT

STRATHMILLAN/MOORGATE
 COMBINED SEWER RELIEF
 CONTRACT 4

STRATHMILLAN ROAD
 98m S of LODGE AVE.
 to 34m N of LODGE AVE.

SHEET 5 OF 8
 CITY DRAWING NUMBER
 LD-2922

PLOT SCALE: 1:30.25
 FILE: STR01PR-F-DWG 2004-01-07 1:53pm ADL