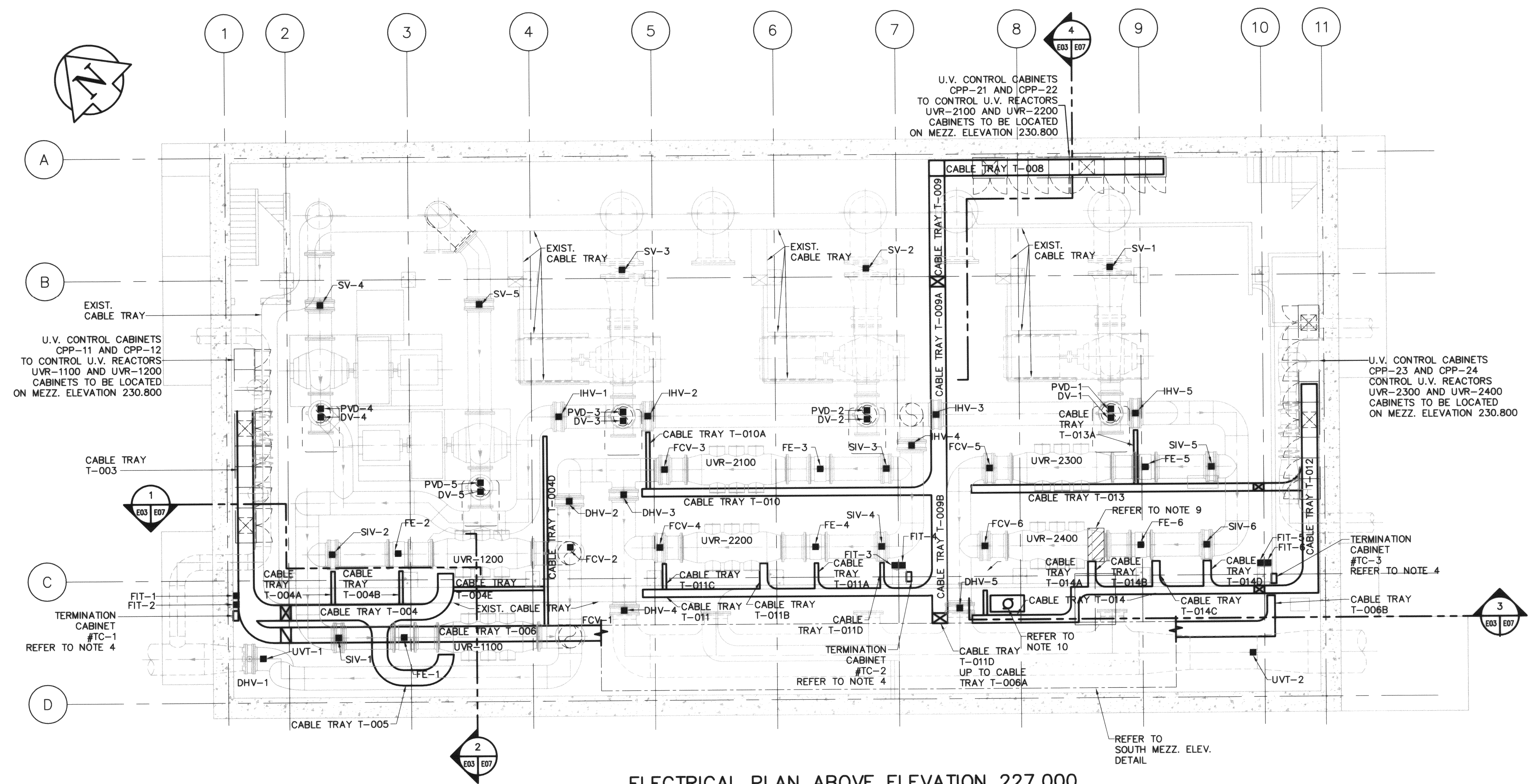
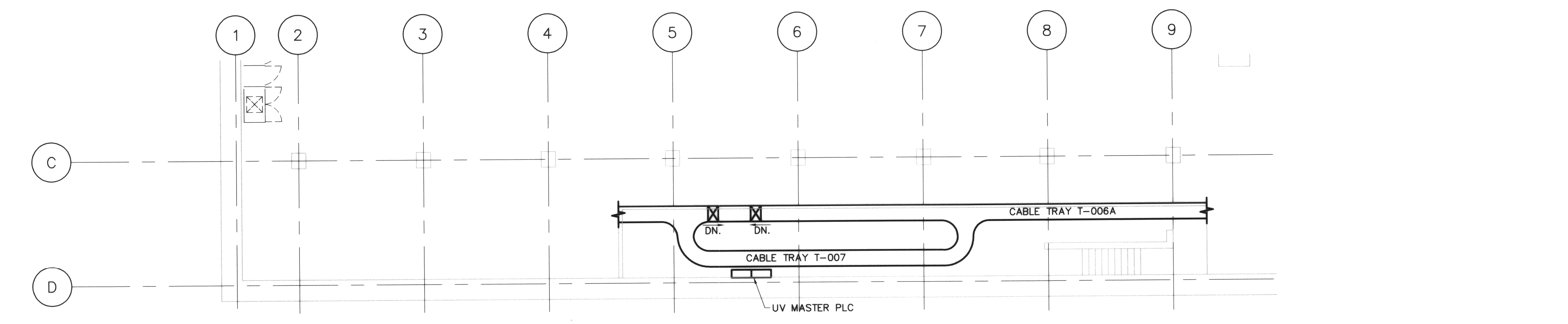


SHEET: DW-A1- (1/2003)

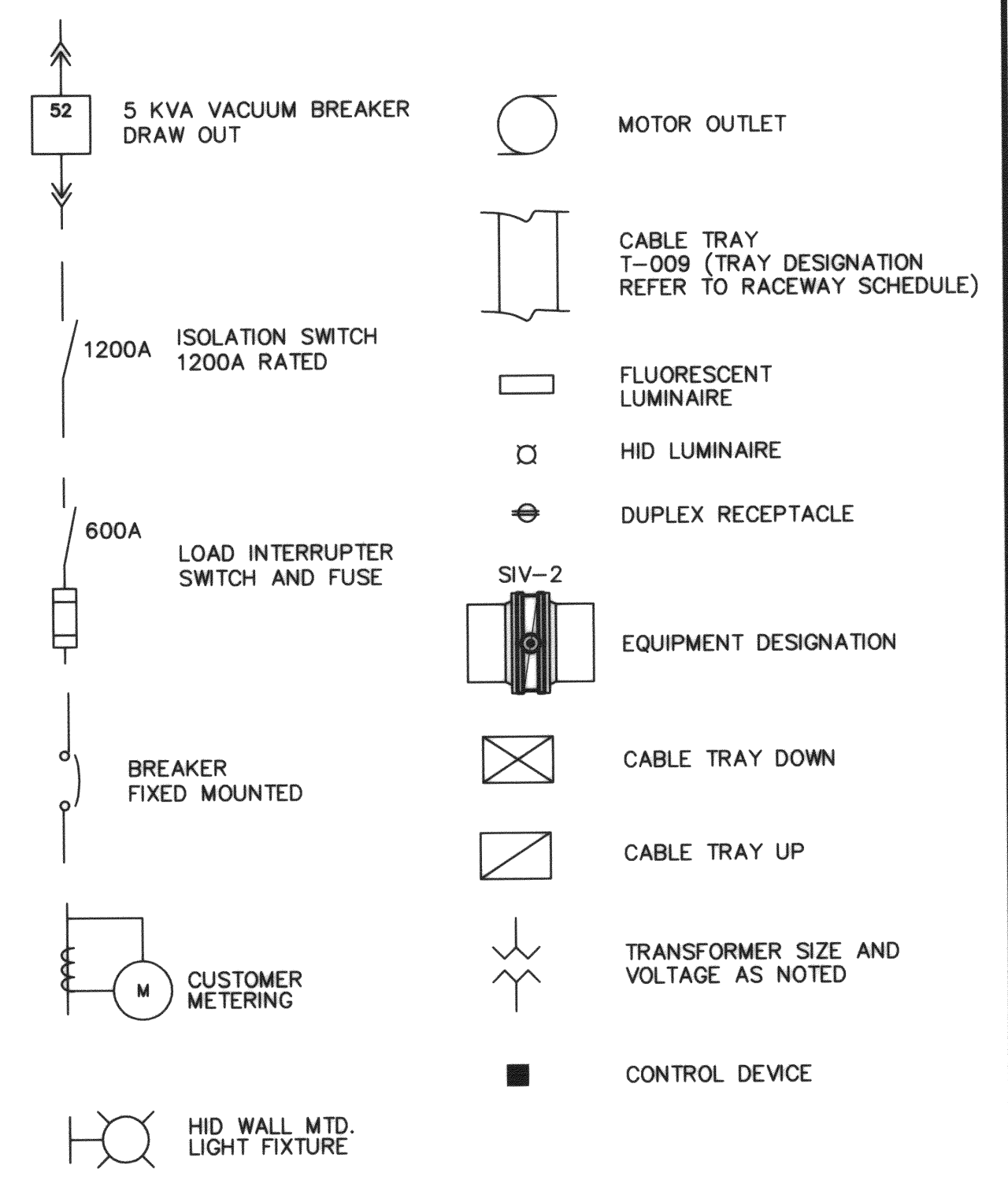


ELECTRICAL PLAN ABOVE ELEVATION 227.000
SCALE : 1 : 100



SOUTH MEZZANINE PARTIAL PLAN ABOVE ELEVATION 229.800
SCALE : 1 : 100

DEACON ELECTRICAL LEGEND

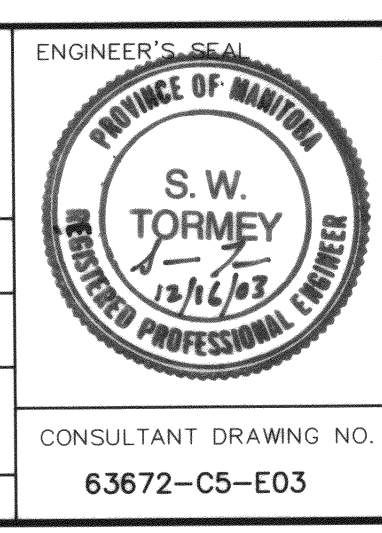


NOTES:

1. ALL CABLE TRAY INSTALLATION SHALL BE COORDINATED WITH EXISTING EQUIPMENT, ALL NEW PIPING, WALKWAY, LADDER & PIPE SUPPORT INSTALLATIONS.
2. REFER TO "RACEWAY SCHEDULE" IN SPECIFICATION FOR TYPE AND CABLES TO BE INSTALLED IN EACH RACEWAY.
3. REFER TO "CABLE SCHEDULE" IN SPECIFICATION FOR CABLE SIZE, TYPE, ORIGIN, DESTINATION AND RACEWAYS USED FOR CABLE INSTALLATION.
4. REFER TO DRAWING E07 FOR DETAILS OF TERMINAL CABINET TC-1, TC-2 AND TC-3.
5. WIRING IN CONDUIT: CONDUIT SHALL BE INSTALLED ATTACHED TO CABLE TRAYS WHERE POSSIBLE FROM CABLE ORIGIN POINT TO FINAL DESTINATION.
6. CONTRACTOR TO DO FULL-SIZE SAMPLE CABLE TRAY LAYOUT ON EXIST. FLOOR, AND CONTRACT ADMINISTRATOR TO REVIEW & ACCEPT PRIOR TO INSTALLING ANY CABLE TRAY.
7. POWER CABLES AND INSTRUMENTATION CABLES INSTALLED IN CABLE TRAYS SHALL BE SEPARATED BY BARRIER IN TRAY.
8. REFER TO DRAWING I02 FOR EXACT LOCATION OF ALL CONTROL EQUIPMENT.
9. DISCONNECT EXISTING PUMP MOTOR DP-2 AND MAKE READY FOR REMOVAL BY MECHANICAL CONTRACTOR.
10. NEW LOCATION FOR PUMP DP-2. EXTEND EXISTING FEEDER CABLE TO NEW LOCATION AND RECONNECT MOTOR. STOP/START PUSH BUTTON CONTROLLER MOUNTED ON COLUMN LINE C-B SHALL REMAIN.



B.M. ELEV.		EARTH TECH	CH2MHILL
DESIGNED BY	GSN	CHECKED BY	SWT
DRAWN BY	DS, DC	APPROVED BY	D.T.
HOR. SCALE:	AS SHOWN	RELEASED FOR CONSTRUCTION BY:	
VERTICAL SCALE:			
0 ISSUED FOR TENDER	03/12/12	DATE	2003/10/22
NO. REVISIONS		DATE	



THE CITY OF WINNIPEG
Winnipeg WATER AND WASTE DEPARTMENT

DEACON ULTRAVIOLET (UV) LIGHT DISINFECTION PROJECT

ELECTRICAL - UV INSTALLATION PLAN ABOVE ELEVATION 227.000m

CITY FILE NUMBER: SHEET 3 OF 7
CITY DRAWING NUMBER: D-8432

CONSULTANT DRAWING NO. 63672-C5-E03