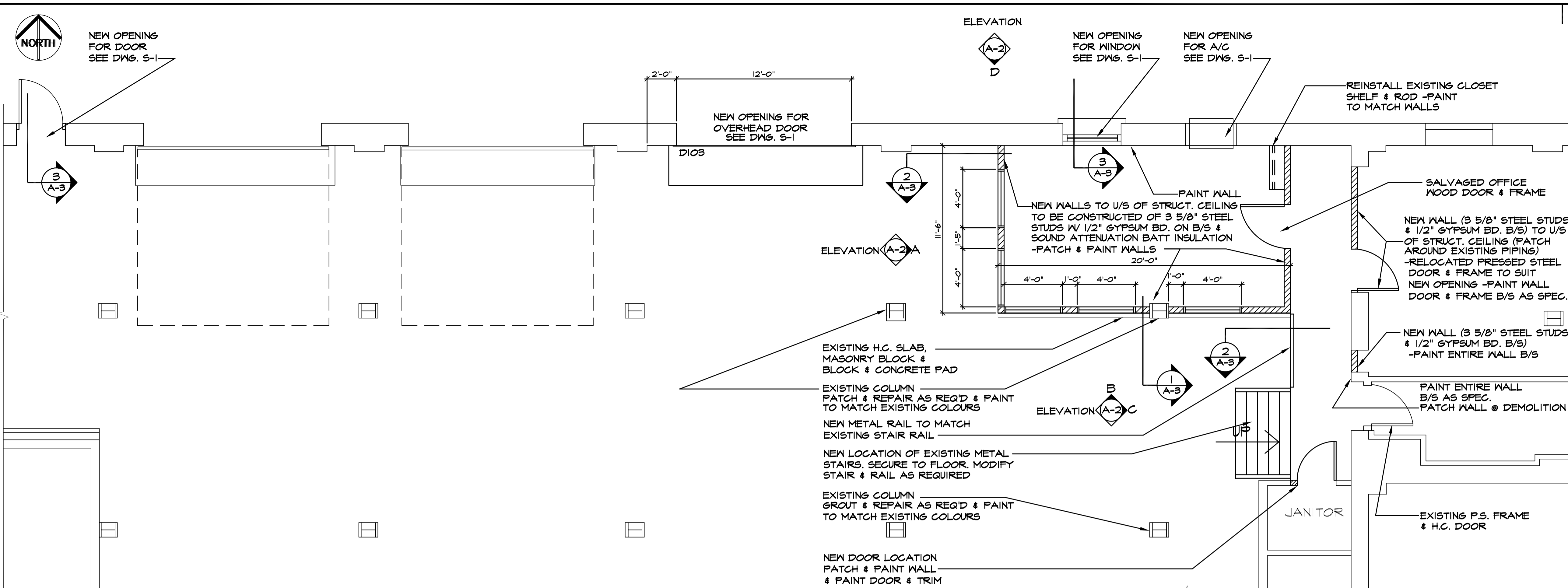


File Name: 2003B4A2.dwg
 Date: 2003.12.04
 Description: New Floor Plan & Details
 Project No.: 2003-B4
 Address: 55 Princess St.



NOTES:

FINISHES:

INTERIOR OFFICE FLOOR FINISH
 POLYFLOR PRESTIGE PVC FLOORING -TERRACOTTA #1820

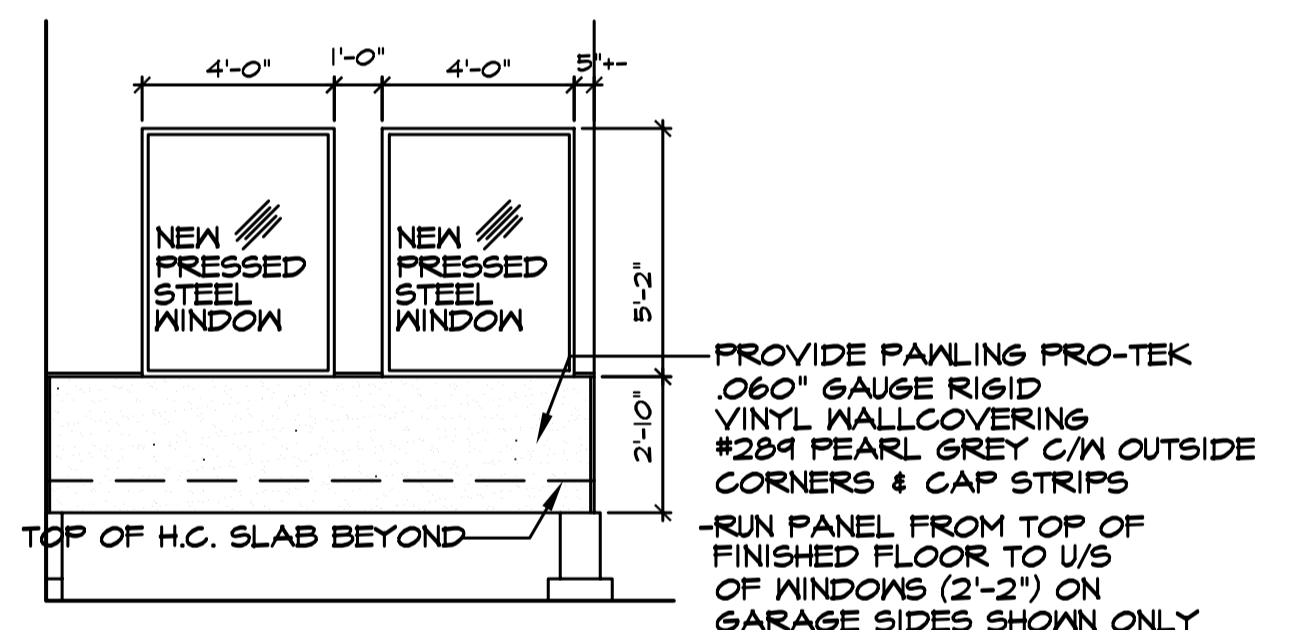
INTERIOR OFFICE BASEBOARD
 4" RUBBER BASEBOARD BY JOHNSONITE -BLUE LAGOON #DC-92

INTERIOR /EXTERIOR OFFICE WALLS PAINT
 PRATT & LAMBERT GINGER WHIP -FOR-2001-000

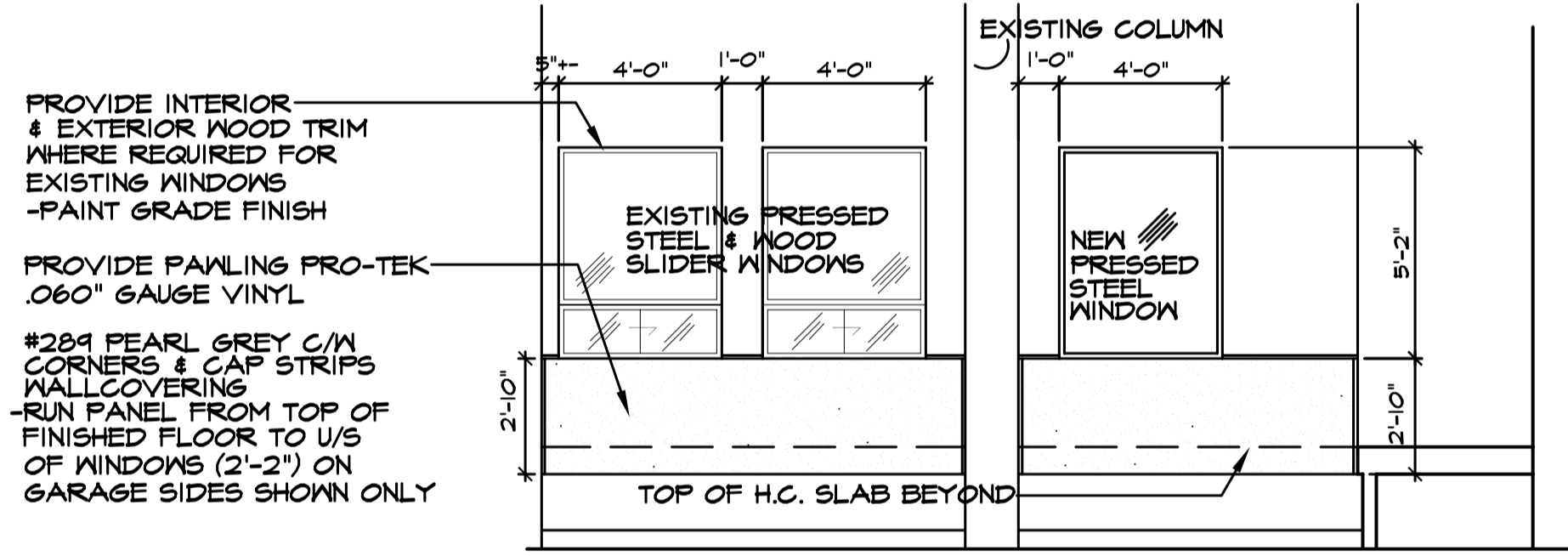
INTERIOR /EXTERIOR OFFICE DOOR FRAME, & WINDOW TRIMS
 PRATT & LAMBERT OLD WORLD -FOR-1222-000

CORRIDOR PAINT
 -NORTH WALL
 -SOUTH WALL (JANITOR CLOSET)
 -EAST WALL W/ TWO DOORS
 -WEST WALL ONLY (STORAGE RM.)
 PRATT & LAMBERT GINGER WHIP -FOR-2001-000

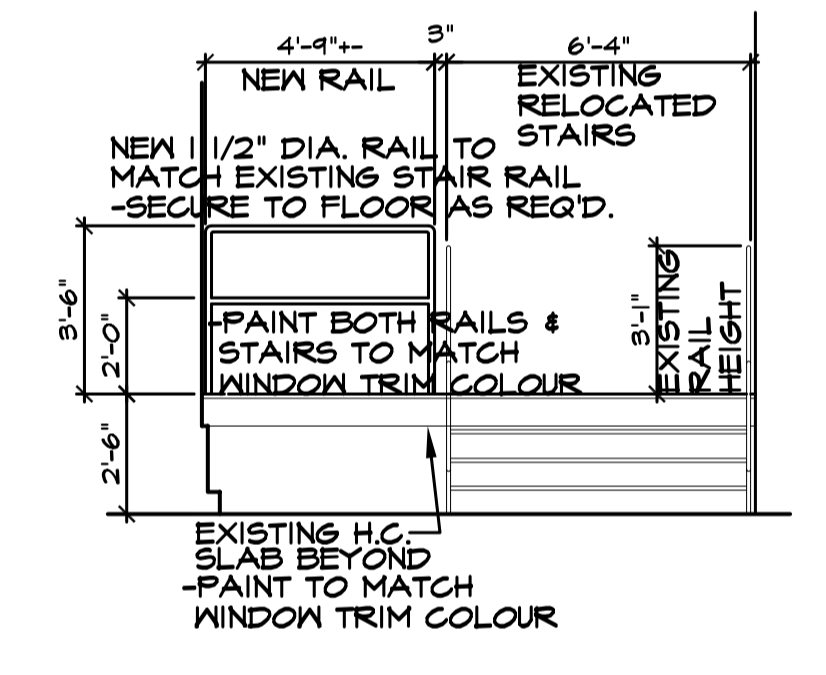
LARGE SCALE PLAN -NEW OFFICE LAYOUT & NEW OPENINGS
 SCALE: 1/4" = 1'-0"



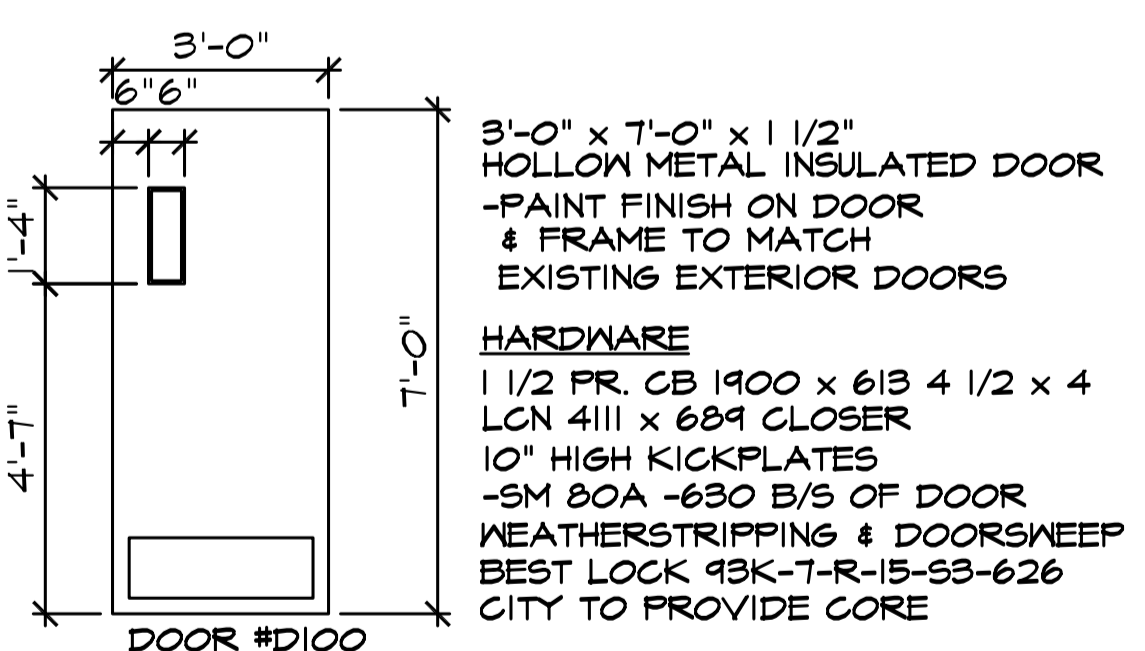
ELEVATION A -NEW WINDOWS /WALL FINISH
 SCALE: 1/4" = 1'-0"



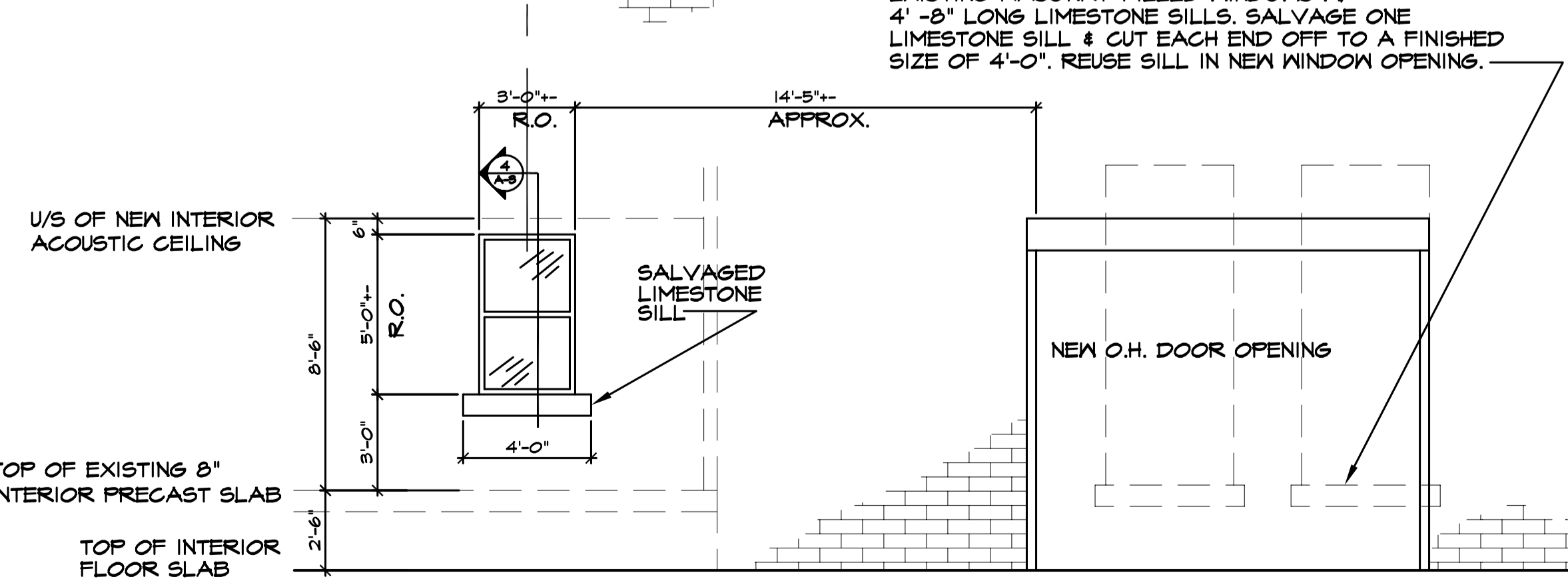
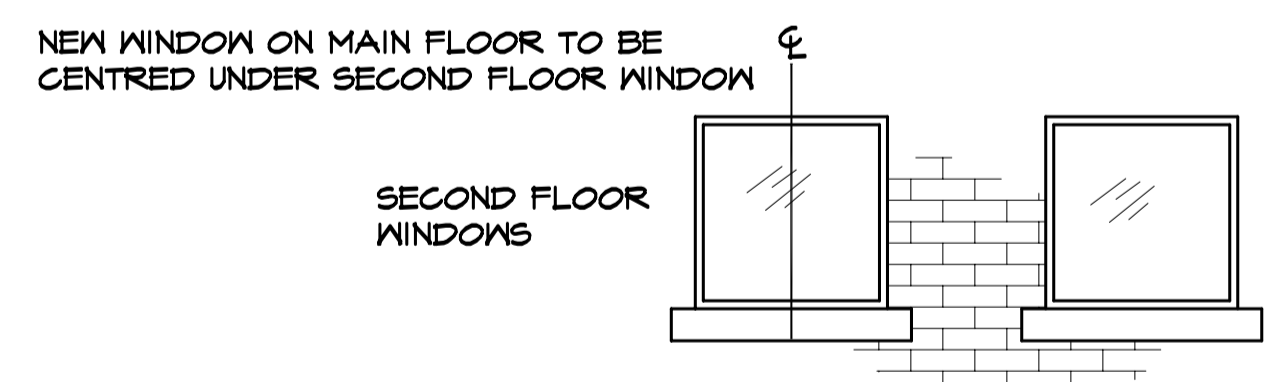
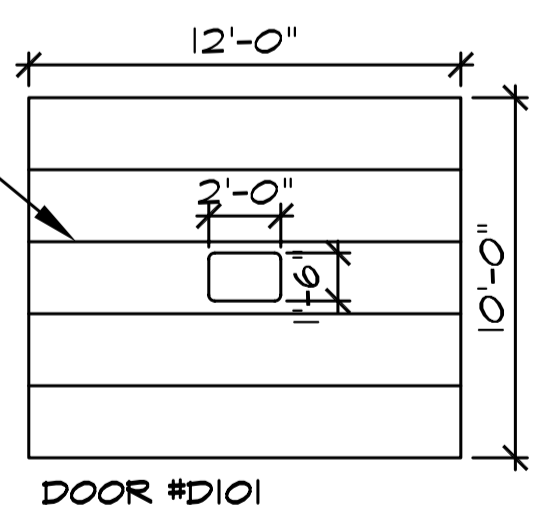
ELEVATION B -NEW & RELOCATED WINDOWS
 SCALE: 1/4" = 1'-0"



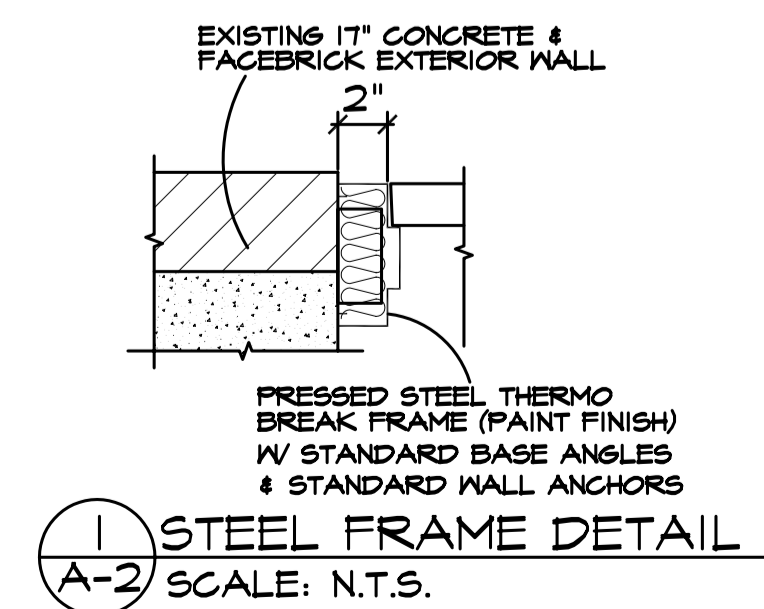
ELEVATION C -RELOCATED STAIRS & NEW RAIL
 SCALE: 1/4" = 1'-0"



NEW INSULATED SECTIONAL METAL THERMOCORE OVERHEAD DOOR W/ DUAL PANE GLAZING PANEL W/ ROUND CORNERS
 -PANEL SHALL BE SEALED TO DOOR SECTION BY AN EPDM RUBBER GASKET ATTACHED W/ HOT GLUE, TO PROVIDE A WEATHER TIGHT SEALING.



ELEVATION D -NEW WINDOW OPENING
 SCALE: 1/4" = 1'-0"



STEEL FRAME DETAIL
 SCALE: N.T.S.

ORIGINAL SEALED BY:
 R.K. FOK LI Arch.
 Date: 2003.12.10

NO.	REVISION/DESCRIPTION	BY	DATE

DRAWN BY: MMK
 CHECKED BY: USER APPROVAL
 DATE: 2003.12.04

CITY OF WINNIPEG
 PLANNING, PROPERTY & DEVELOPMENT DEPARTMENT
 CIVIC ACCOMMODATIONS DIVISION
 300 - 65 GARRY ST. R3C 4K4

PROJECT
 Winnipeg Police Services
 Main Floor Repair Garage
 55 PRINCESS STREET

SHEET TITLE
 New Floor Plan & Elevations

SCALE	PROJECT NO.	SHEET NO.
Noted	2003-134	A-2

DRAWING SHEET SIZE: A1 (594mm x 841mm) PLOT 1:1