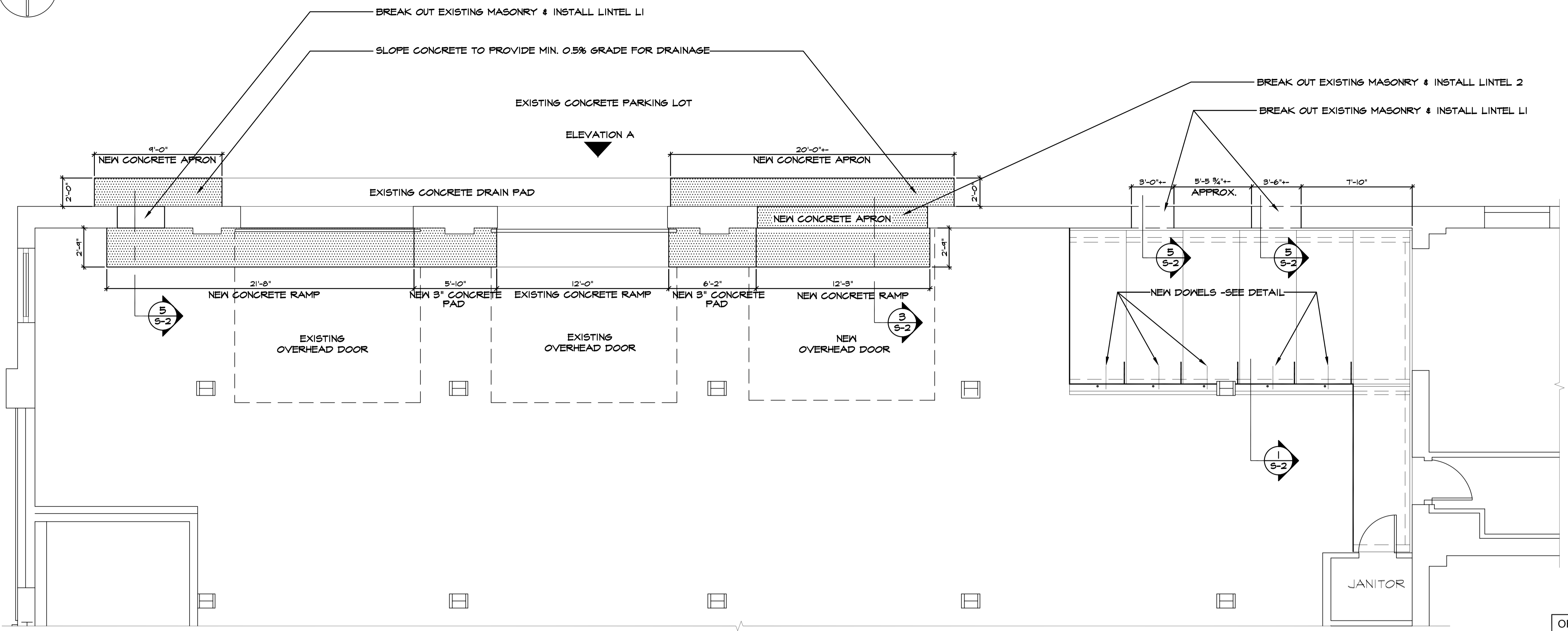


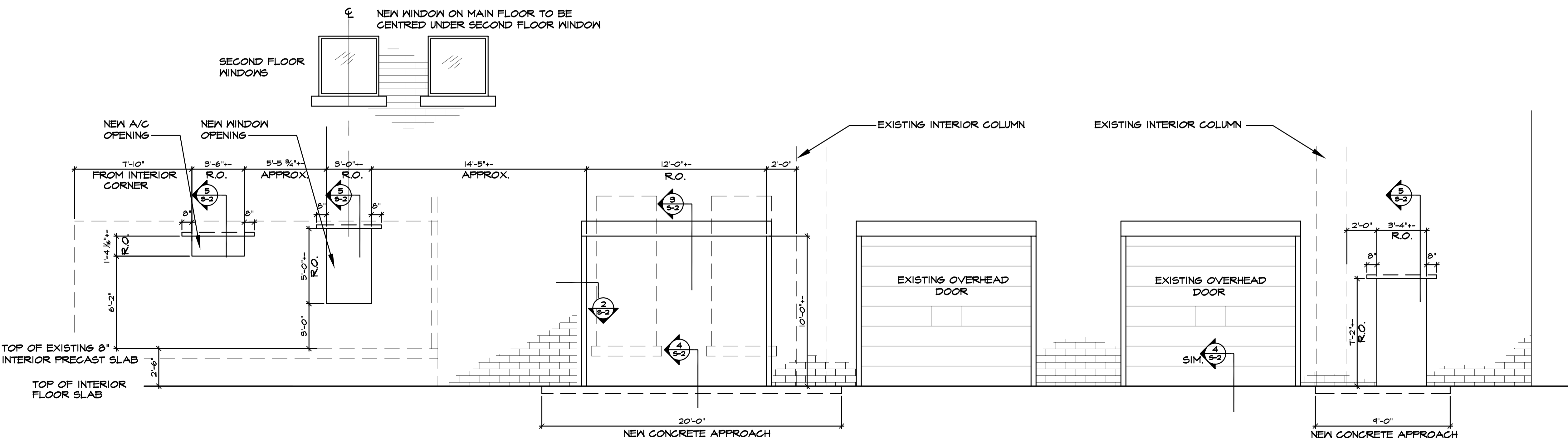
20031204.dwg File Name Date 2003.12.04 Description H.C. Slab Reinforcing & New Overhead Door Opening Project No. 2003-134 Address 55 Princess St.

NOTES :



LARGE SCALE PLAN -HOLLOW CORE SLAB REINFORCING, NEW OPENINGS & CONCRETE RAMPS  
SCALE: 1/4" = 1'-0"

ORIGINAL SEALED BY:  
B.T.M. Konzelman P. Eng.  
Date: 2003.12.10



ELEVATION A -NEW ROUGH OPENINGS & NEW CONCRETE PADS  
SCALE: 1/4" = 1'-0"

NO.	REVISION/DESCRIPTION	BY	DATE
SEALS			

DRAWN BY	MMK	CHECKED BY	APPROVED
DATE	2003.12.04	USER APPROVAL	

CITY OF WINNIPEG  
PLANNING, PROPERTY &  
DEVELOPMENT DEPARTMENT  
CIVIC ACCOMMODATIONS DIVISION  
300 - 65 GARRY ST. R3C 4K4

PROJECT  
Winnipeg Police Services  
Main Floor Repair Garage  
55 PRINCESS STREET

SHEET TITLE  
Hollow Core Slab Plan  
& New Rough Opening  
Elevation

SCALE	PROJECT NO.	SHEET NO.
Noted	2003-134	5-1

DRAWING SHEET SIZE: A1 (594mm x 841mm) PLOT 1:1