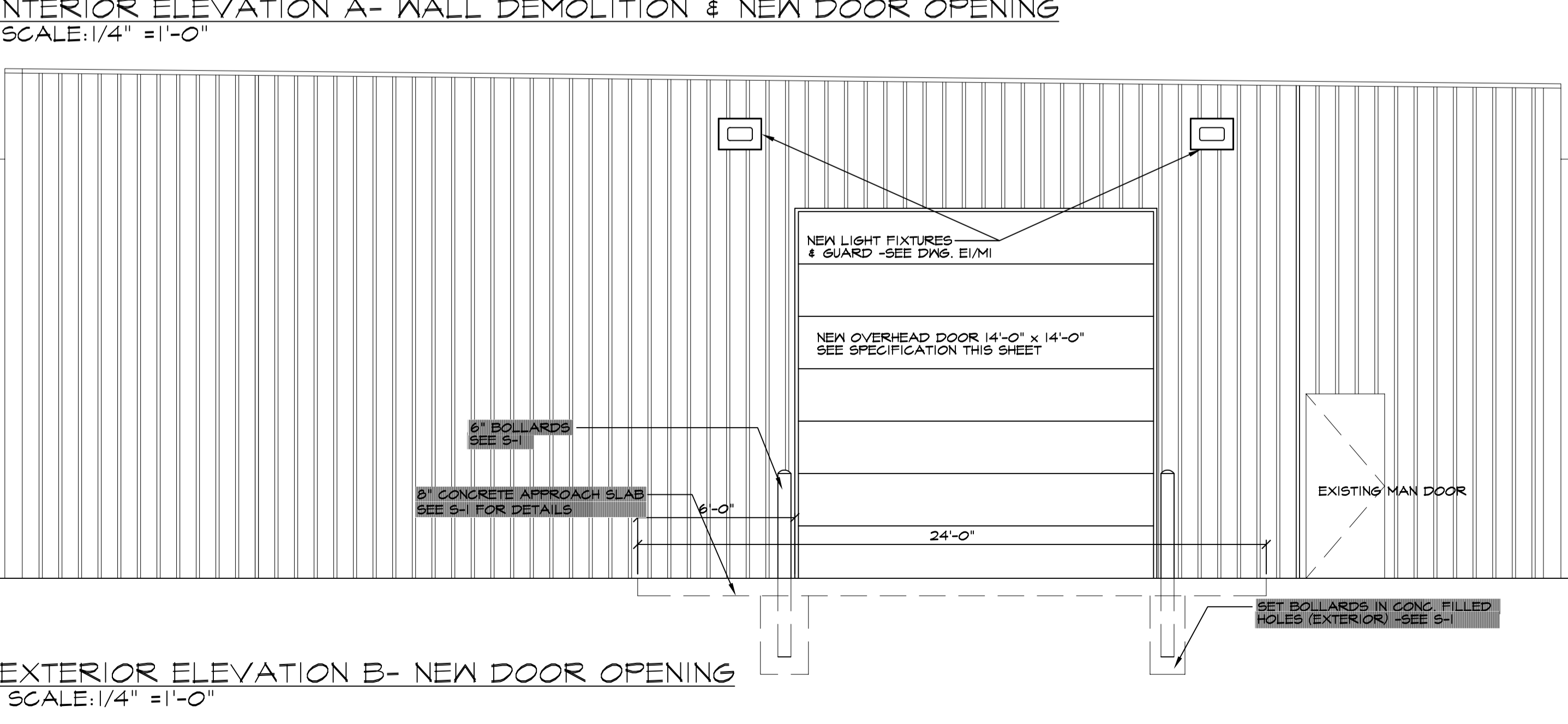
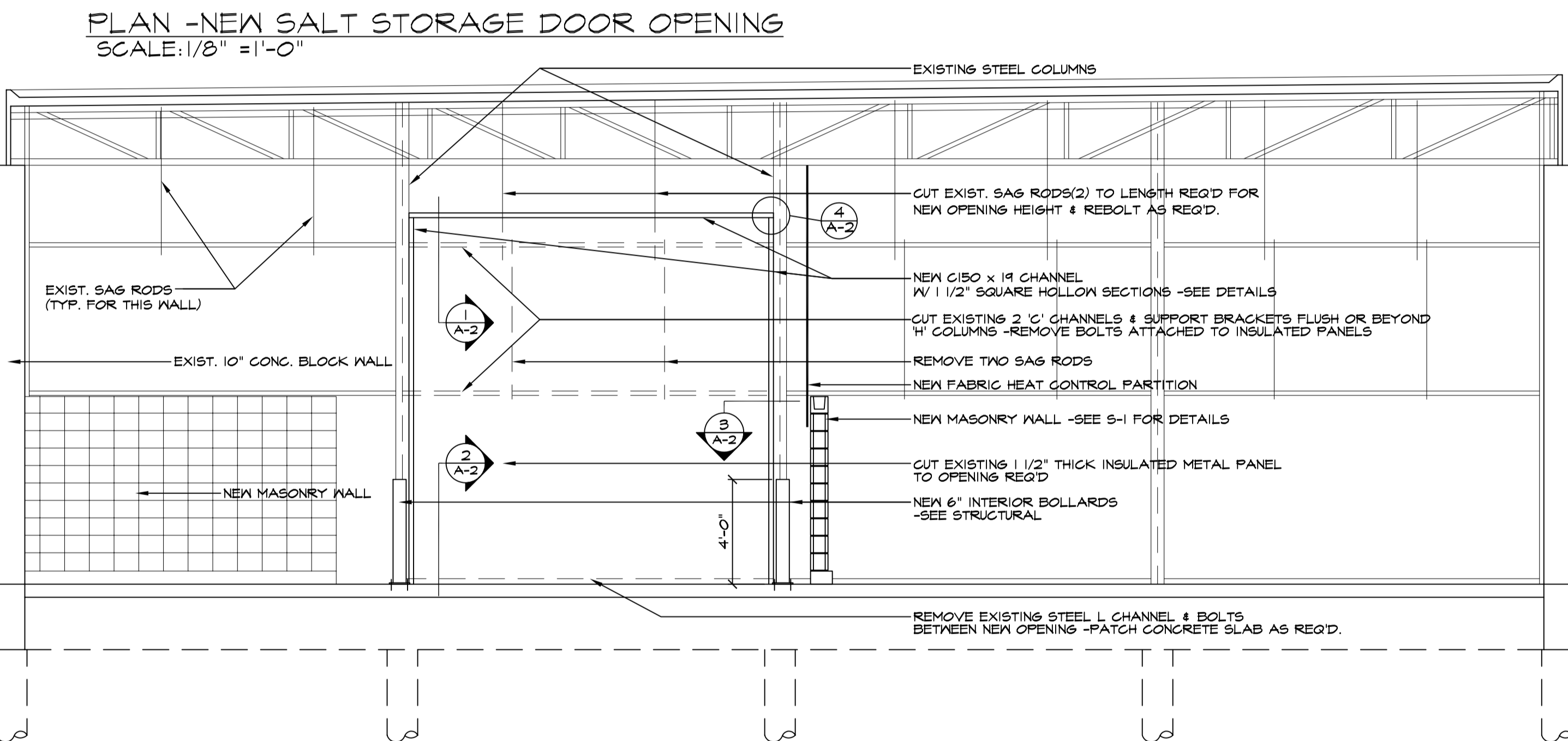
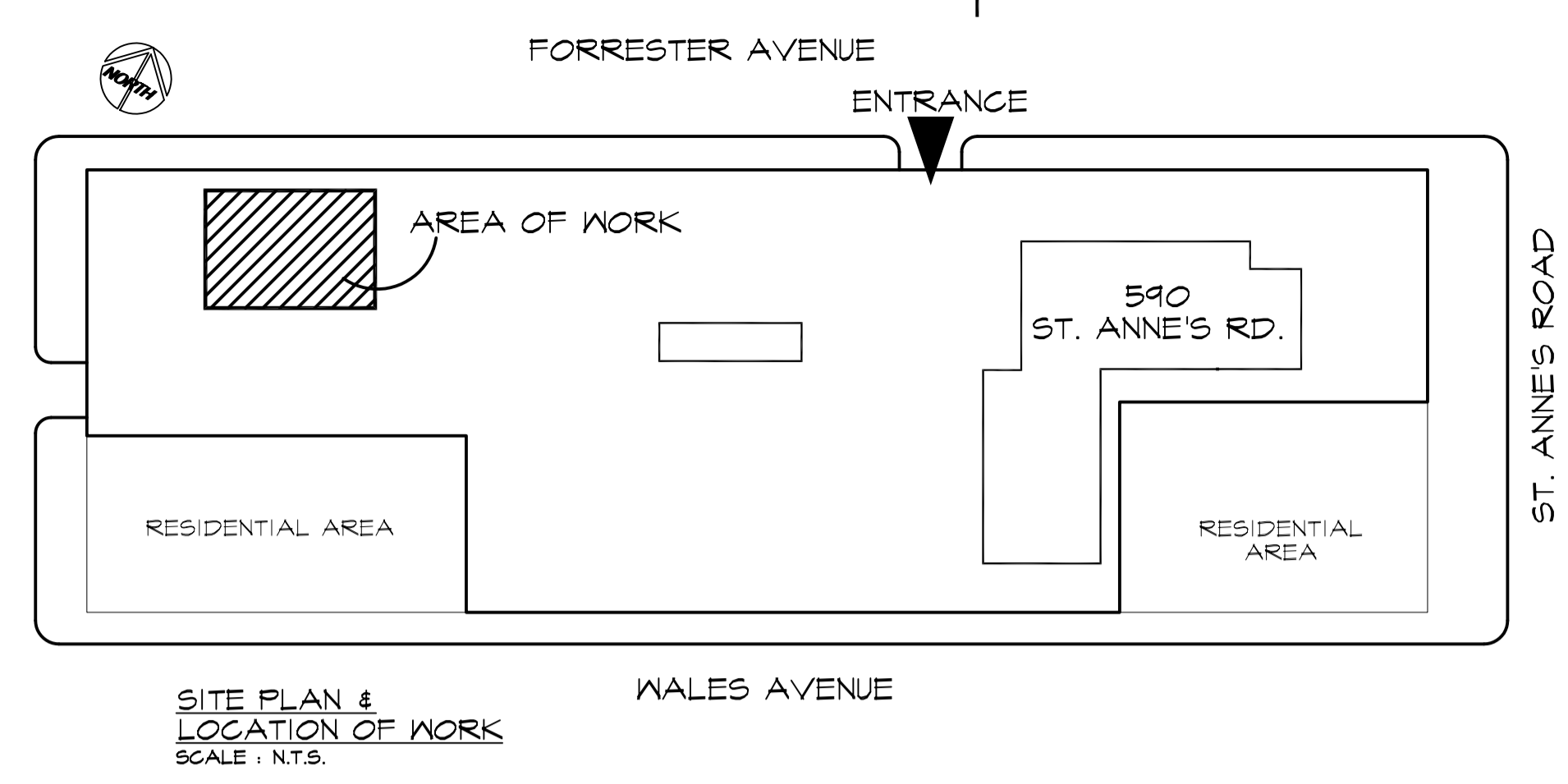
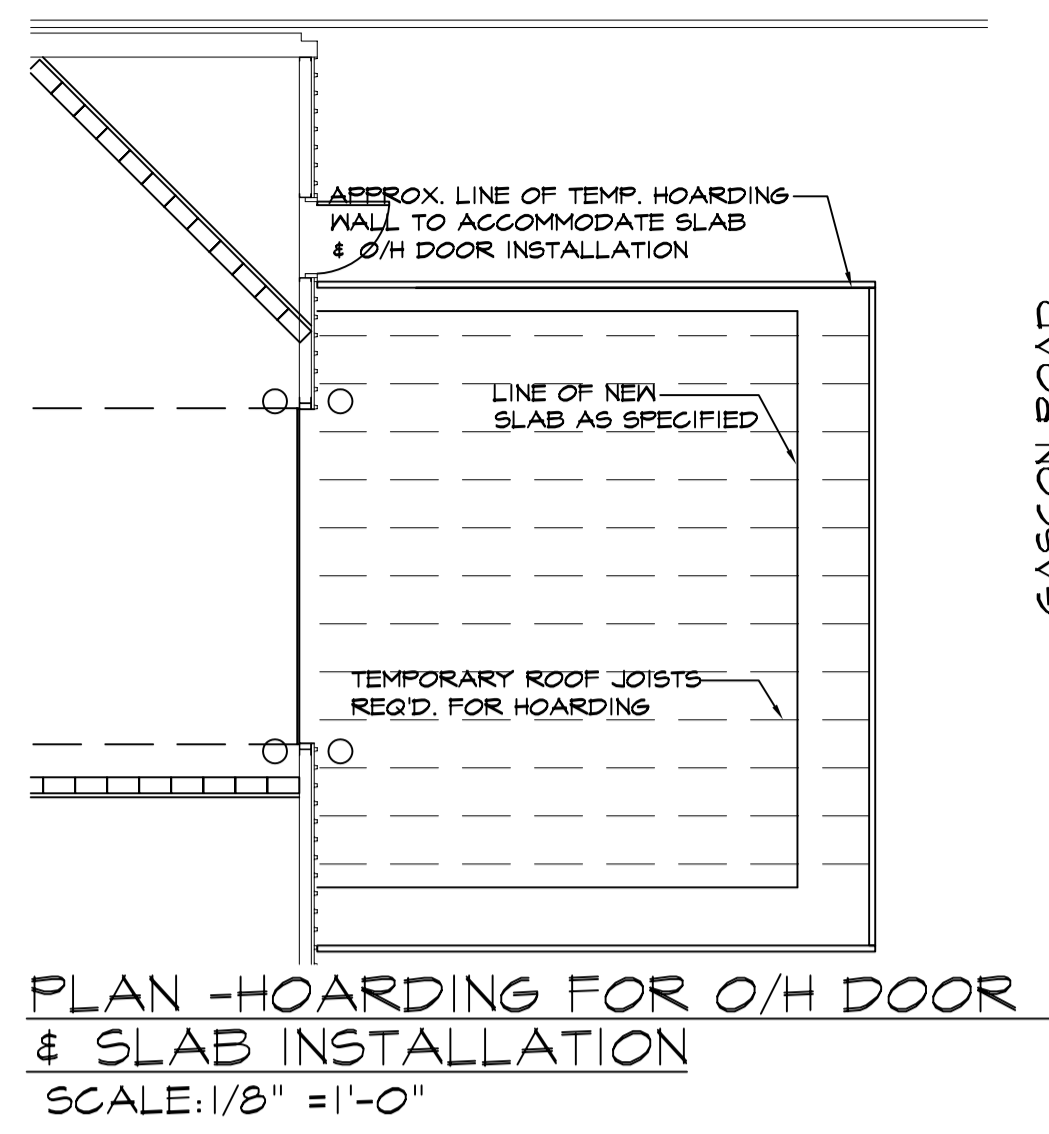
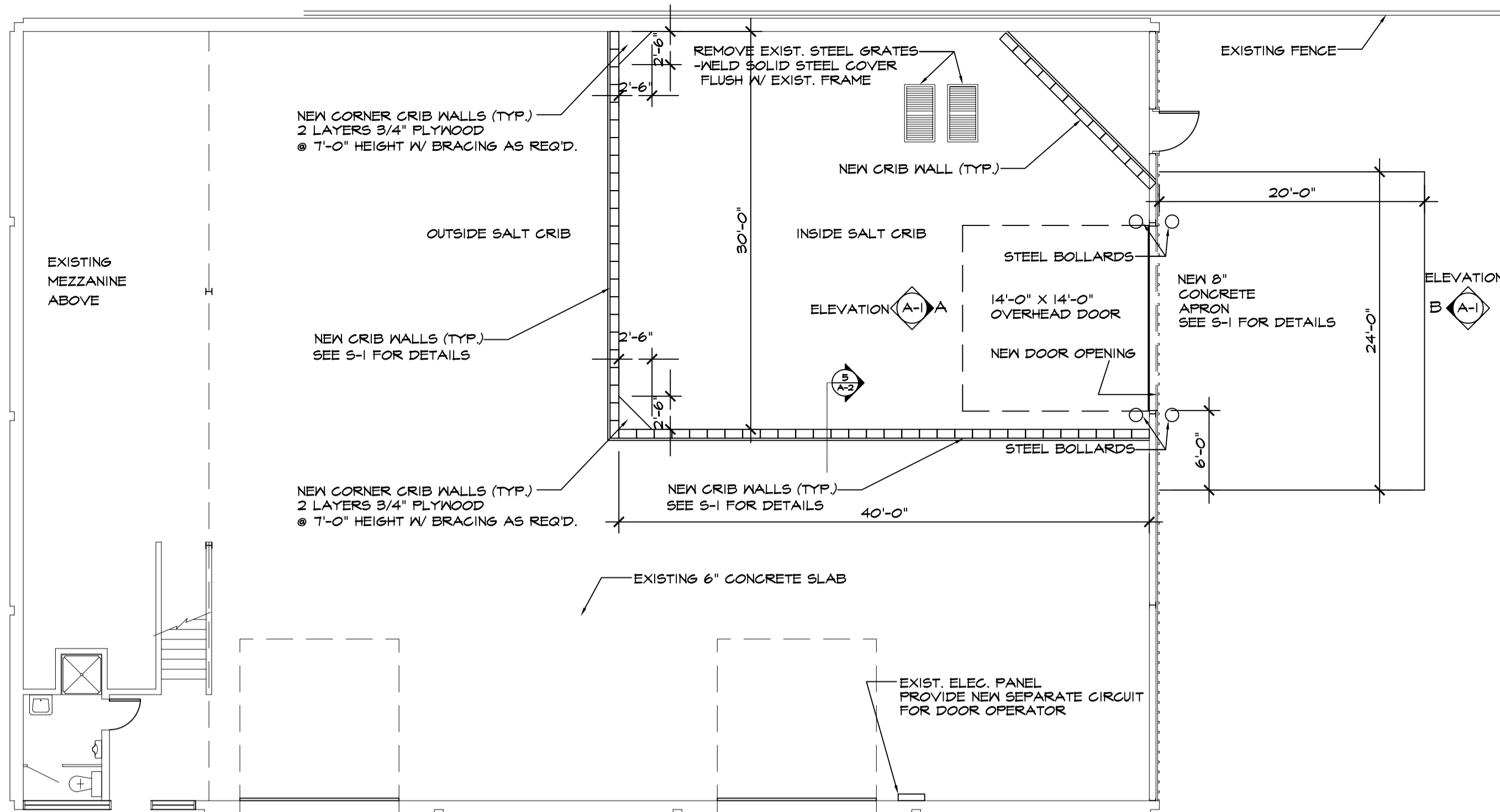


NOTES :



- OVERHEAD DOOR SPECIFICATIONS**
- A. SUPPLY & INSTALL 14'-0" x 14'-0" OVERHEAD DOOR. DOOR SHALL BE "THERMOCORE" 592 SERIES, 2" THICK INSULATED METAL DOOR C/W TROLLEY TYPE 208V/3 PHASE OPERATOR.
  - B. TRACKS SHALL BE 11 GA. C/W CONTINUOUS WELDED TRACK ANGLE OF 13 GA. GALV. STEEL ROLLERS AND TRACK SHALL BE 3" COMMERCIAL DUTY. MOUNTING SHALL BE WITH THE AFOREMENTIONED CONTINUOUS TRACK MOUNTING ANGLE.
  - C. COUNTER BALANCE SHALL INCLUDE 100,000 DUTY CYCLE TORSION SPRING. INSTALL DOOR TRACKS WITH PUSHER SPRINGS TO MAINTAIN TENSION OF THE CABLES DURING CLOSING CYCLE.
  - D. DOOR SHALL HAVE ENERGY SAVING WEATHERSTRIPPING ALL AROUND INCLUDING A CONTINUOUS HEADER SEALER STRIP.
  - E. ALL HARDWARE SHALL BE "SUPER 3" HARDWARE AS PER MANUFACTURER'S SPECIFICATION. INSTALL A MANUAL SAFETY RELEASE FROM EACH DOOR PANEL TO THE DRIVE YOKE C/W SUITABLE LENGTH OF ROPE. INSTALL TWO LIFT HANDLES ON DOOR.
  - F. SUPPLY REMOTE CONTROL KEYPAD AND 2 HAND HELD REMOTE DOOR CONTROLLERS FOR DOOR (IN ADDITION TO SPECIFIED CONTROL STATION).

NO.	REVISION/DESCRIPTION	BY	DATE
SEALS			

DRAWN BY	MMK	CHECKED BY	APPROVED
DATE	2003.12.14	USER APPROVAL	

CITY OF WINNIPEG  
 PLANNING, PROPERTY &  
 DEVELOPMENT DEPARTMENT  
 CIVIC ACCOMMODATIONS DIVISION  
 300 - 65 GARRY ST. R3C 4K4

PROJECT  
 590 St. Anne's Rd.  
 Public Works Building

SHEET TITLE  
 Temp. Salt Storage Facility  
 Floor Plans &  
 Building Elevations

SCALE	PROJECT NO.	SHEET NO.
Noted	2003-135	A-1