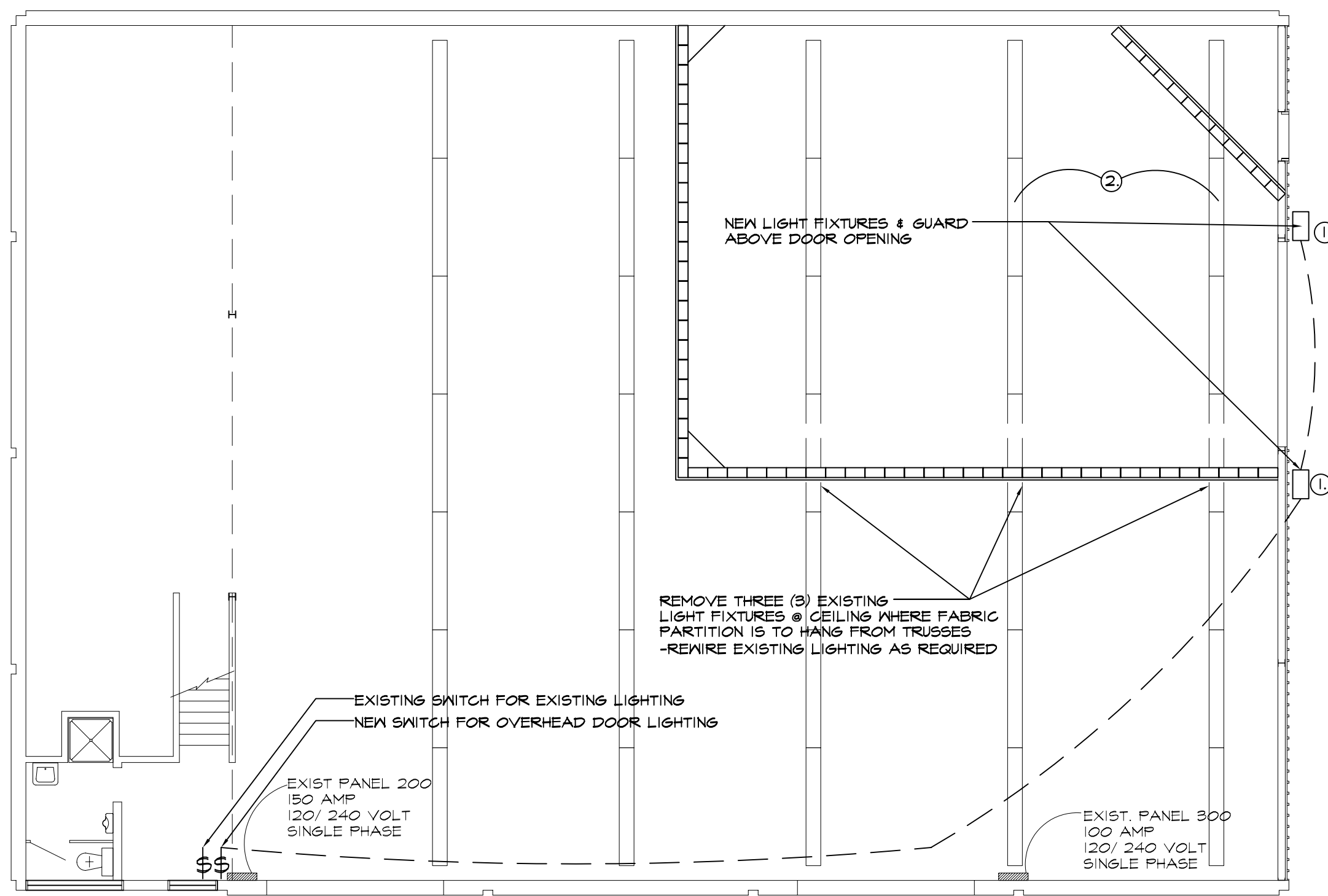


PLAN -EXISTING ELECTRICAL /MECHANICAL PLAN
SCALE: 1/8" = 1'-0"



PLAN -EXISTING LIGHTING LAYOUT PLAN
SCALE: 1/8" = 1'-0"

GENERAL NOTES:

- ① INSTALL 2 NEW "THOMAS LIGHTING" 'DAY-BRITE' QUARTZ FLOOD LIGHTS MODEL NO. QFD-500-LF-120V. WIRE CIRCUIT TO PANEL 200.
- ② ADJUST EXISTING LIGHTING AS REQUIRED TO ACCOMMODATE NEW O.H. DOOR AND TRACK.
- ③ REMOVE & REINSTALL CONDUIT & WIRING ON EXISTING WALL.
- ④ REMOVE ALL AIR LINES ETC. TO CREATE A CLEAR WALL.
- ⑤ EXISTING EXHAUST FAN TO REMAIN. ENSURE OPERABILITY OF SYSTEM IF DUCTWORK & ELECTRICAL HOOK UP IS MODIFIED.
- ⑥ INSTALL KEY PAD FOR DOOR OPERATION.
- ⑦ INSTALL JACK SHAFT DOOR OPERATOR C/W GALVANIZED COVER ON EXTERIOR OF BUILDING.

OVERHEAD DOOR SPECIFICATIONS (ELECTRICAL)

A. ELECTRICAL CONTRACTOR IS RESPONSIBLE FOR PROVISION AND HOOK UP OF POWER FOR OPERATOR AND ONE SEPARATE 3 BUTTON CONTROL STATION. ELECTRICAL CONTRACTOR TO WIRE AN EXTERIOR MOUNTED PUSH BUTTON PAD. PROVIDE A DISCONNECT SWITCH AT EACH OPERATOR. INSTALL PHOTO-ELECTRIC REVERSING SWITCH AT THE BASE OF DOOR. CO-ORDINATE WITH THE GENERAL CONTRACTOR AND DOOR INSTALLER TO ENSURE OPERABILITY OF ALL SYSTEMS.

NO.	REVISION/DESCRIPTION	BY	DATE
SEALS			

DRAWN BY	MMK	CHECKED BY	APPROVED
DATE	2003.12.14	USER APPROVAL	

CITY OF WINNIPEG
PLANNING, PROPERTY &
DEVELOPMENT DEPARTMENT
CIVIC ACCOMMODATIONS DIVISION
300 - 65 GARRY ST. R3C 4K4

PROJECT
590 St. Anne's Rd.
Public Works Building

SHEET TITLE
Temp. Salt Storage Facility
Electrical & Mechanical Plans
& Specifications

SCALE	PROJECT NO.	SHEET NO.
Noted	2003-135	E1/M1