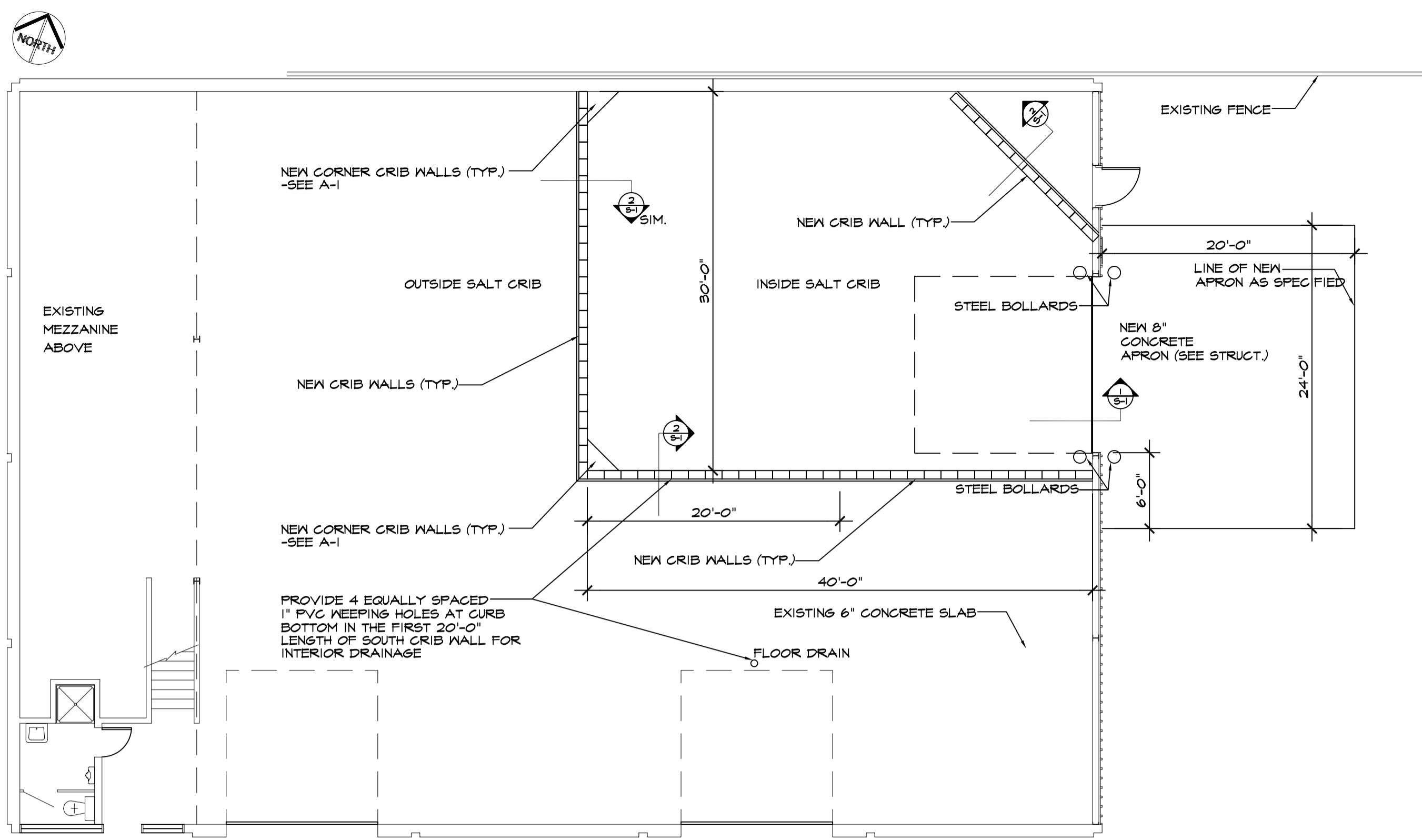
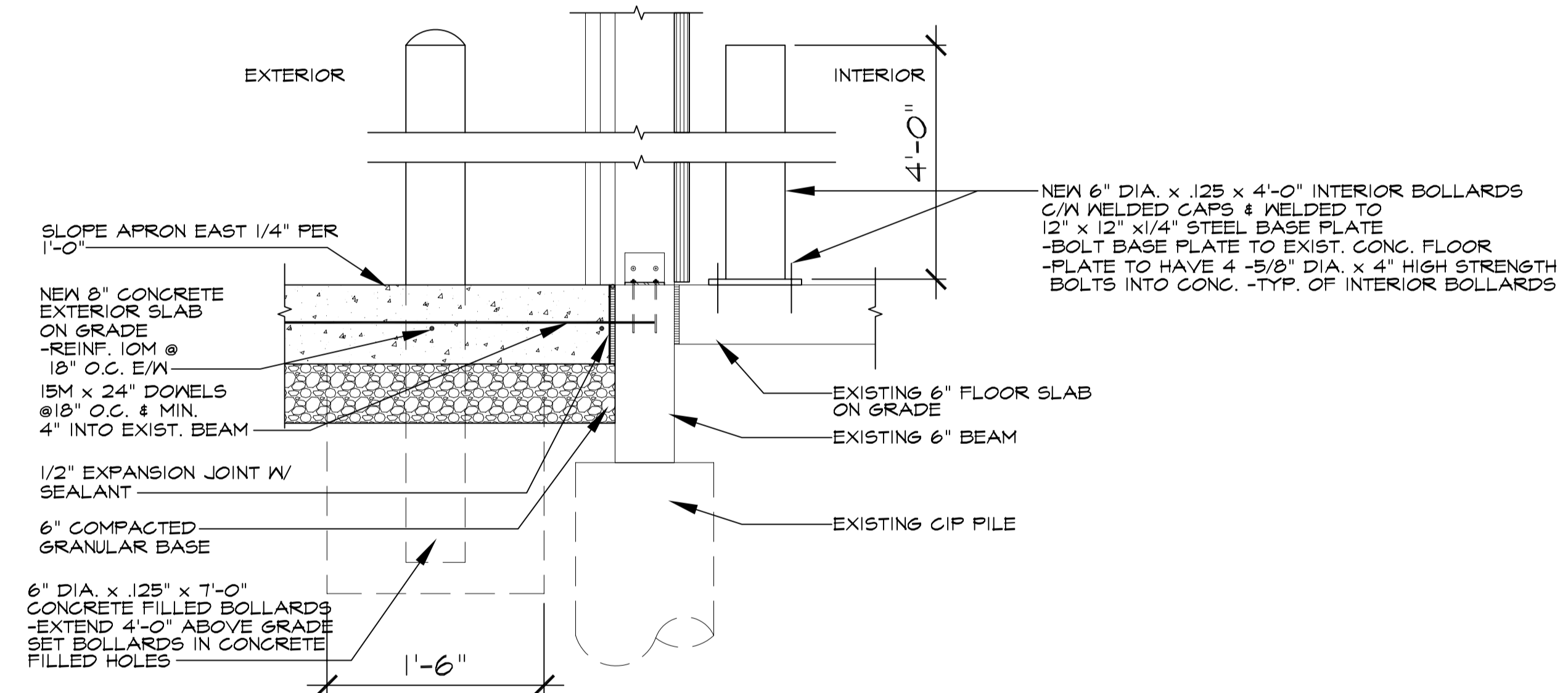


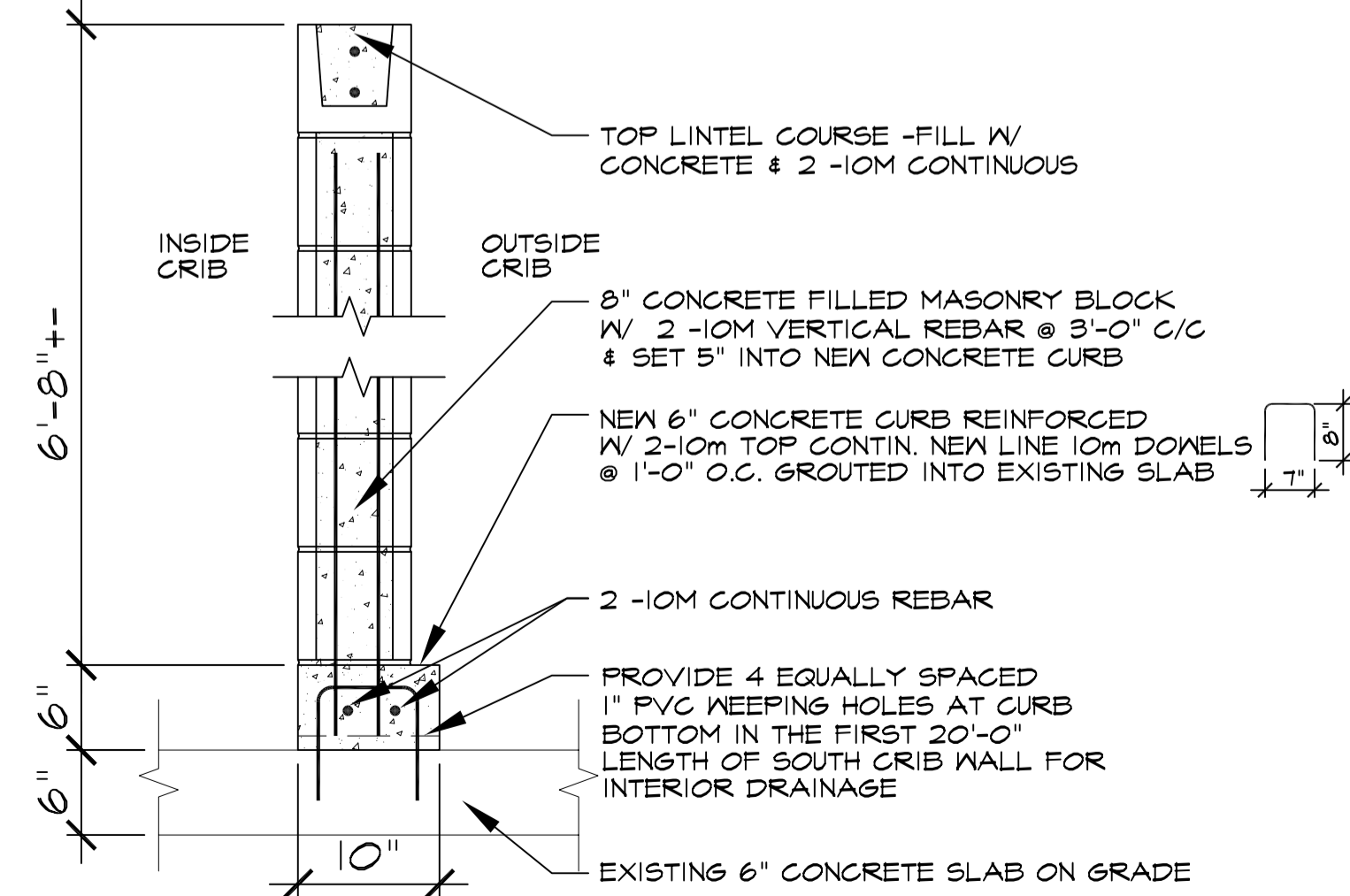
Address 590 St. Anne's Rd. Project No. 2003-135 Description Temp. Salt Storage Facility Date 2003.12.14 File Name 200313551.dwg



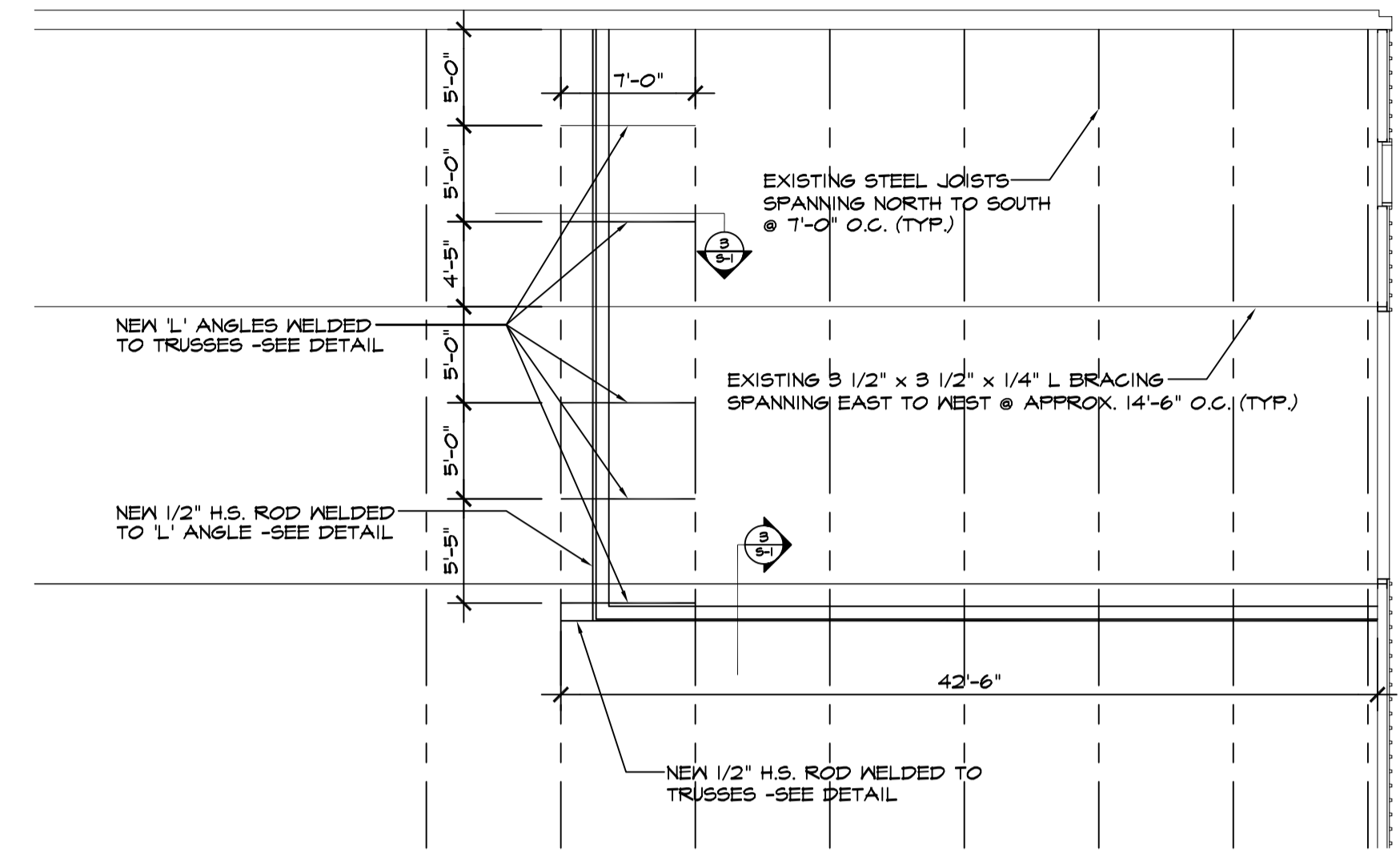
PLAN -NEW MASONRY WALL & NEW CONCRETE PAD
SCALE: 1/8" = 1'-0"



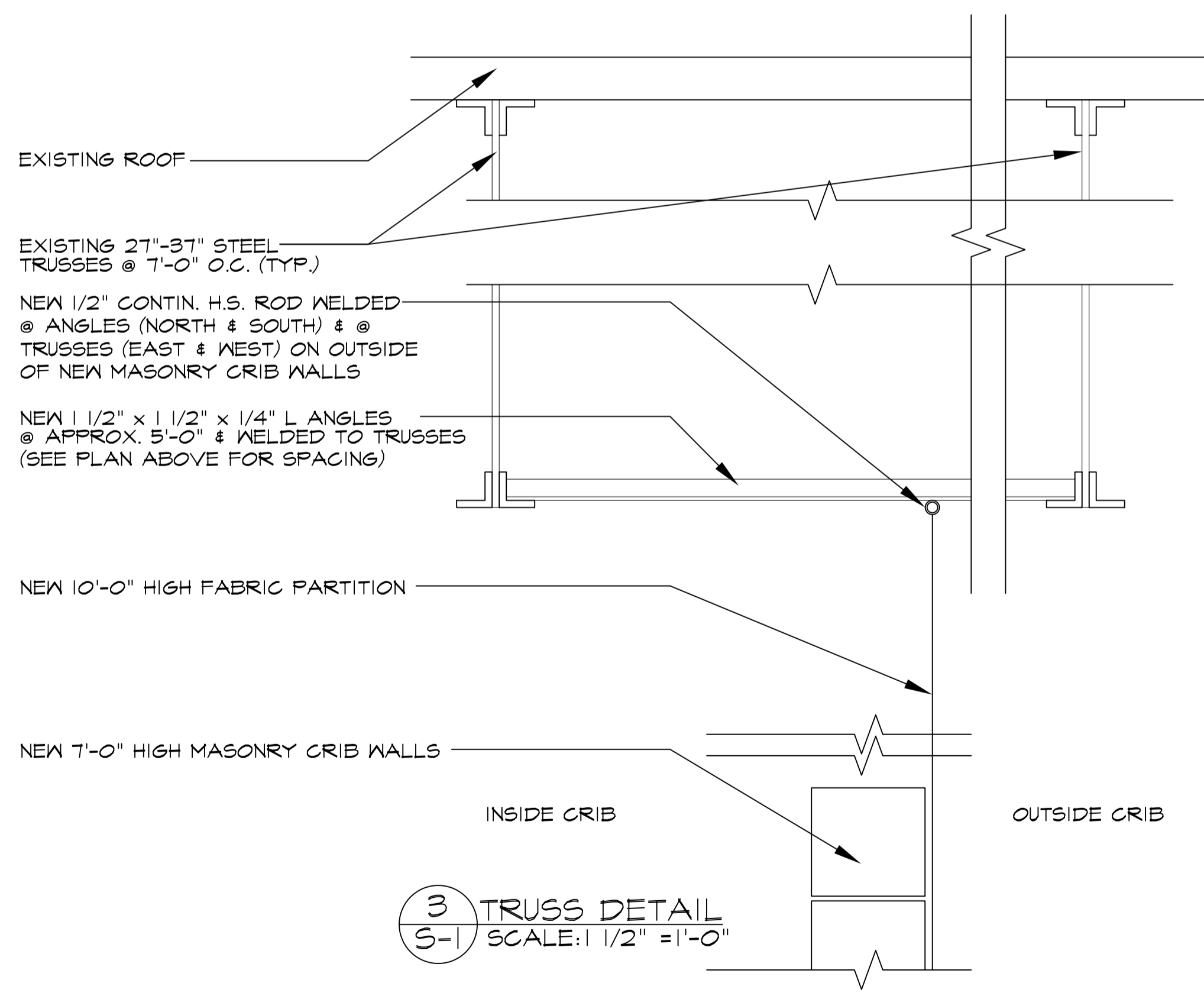
1 CONCRETE APRON DETAIL
SCALE: 1" = 1'-0"



2 CURB & MASONRY WALL DETAIL
SCALE: 1" = 1'-0"



FABRIC PARTITION TRUSS SUPPORTS @ CEILING
SCALE: 1/8" = 1'-0"



3 TRUSS DETAIL
SCALE: 1 1/2" = 1'-0"

- NOTES:
- GENERAL NOTES:
1. ALL WORK SHALL COMPLY WITH THE LATEST EDITION OF THE MANITOBA BUILDING CODE.
 2. CONTRACTOR SHALL CHECK ALL DIMENSIONS ON STRUCTURAL PLANS AND DETAILS FOR COMPLIANCE WITH ARCHITECTURAL & MECHANICAL DRAWINGS.
 3. ALL CONCRETE FOR CURBS & SLABS SHALL BE 30 mpa, 20mm AGGREGATE 100 +-20mm SLUMP WITH 5 - 1% AIR ENTRAINMENT UNLESS NOTED OTHERWISE.
 4. HORIZONTAL REINFORCING IN MASONRY WALL SHALL BE "DUR-O-WALL" AND PLACED IN MORTAR JOINTS @ 24" O/C UNLESS NOTED OTHERWISE. (REINFORCING TO BE 9 GAGE)
 5. CONCRETE FILL FOR MASONRY SHALL BE 25mpa. PROVIDE 2-10m VERTICAL BARS ON EACH SIDE OF ANY OPENINGS AND AT ALL CORNERS.
 6. PROVIDE 8" CONCRETE FILLED BOND BEAM AT TOP AND BOTTOM OF WALL, REINFORCED WITH 2-10m CONTINUOUS (EACH BEAM).
 7. ALL STEEL INCLUDING BOLLARDS TO HAVE TWO COATS RED PRIMER.

ORIGINAL SEALED BY:
B.T.M. Konzelman P. Eng.
Date: 2003.12.19

NO.	REVISION/DESCRIPTION	BY	DATE
SEALS			

DRAWN BY	MMK	CHECKED BY	APPROVED
DATE	2003.12.14	USER APPROVAL	

CITY OF WINNIPEG
PLANNING, PROPERTY &
DEVELOPMENT DEPARTMENT
CIVIC ACCOMMODATIONS DIVISION
300 - 65 GARRY ST. R3C 4K4

PROJECT
590 St. Anne's Rd.
Public Works Building

SHEET TITLE
Temp. Salt Storage Facility
Structural Plan &
Details

SCALE	PROJECT NO.	SHEET NO.
Noted	2003-135	S-1