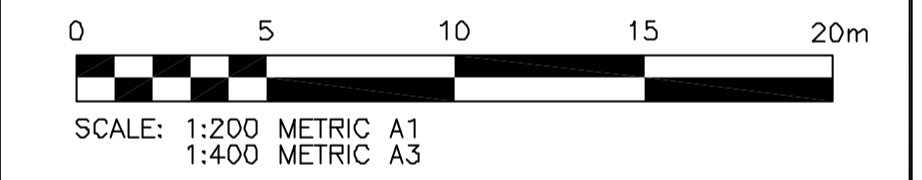


- LEGEND**
- TH101 DRILL HOLE BY KGS GROUP
  - TH-1 ITL AND IDE TEST HOLES (TH1 DRILLED NOV. 19, 1986 AND TH2-TH6 DRILLED FEB. 2-4, 1988)
  - PP3 ITL PNEUMATIC PIEZOMETER (INSTALLED MARCH, 1989)
  - SP4 STANDPIPE PIEZOMETER (INSTALLED MARCH, 1989)
  - SL1 ITL SLOPE INDICATOR (DESTROYED)

**NOTES:**  
 1. GROUND CONTOURS BASED ON DIGITAL ORTHO BASE MAPPING FROM 1998 AIR PHOTO.



**NOTE:**  
 ELEVATIONS FOLLOWED BY (AB) ARE ELEVATIONS ESTABLISHED FROM THE CITY OF WINNIPEG RECORD DRAWINGS. THESE ELEVATIONS SHOULD BE VARIFIED IN THE FIELD BEFORE CONSTRUCTION. ALL OTHER ELEVATIONS HAVE BEEN CONFIRMED BY KGS.

**WARNING**  
 IF POWER EQUIPMENT OR EXPLOSIVES ARE TO BE USED FOR EXCAVATION ON THIS PROJECT THE CONTRACTOR MUST:  
 1) NOTIFY THE GAS COMPANY OF THE PROPOSED LOCATION OF EXCAVATION.  
 2) TAKE PRECAUTION TO AVOID DAMAGE TO GAS COMPANY INSTALLATIONS.  
 SEE PROVINCIAL REGULATION 210/72 FOR DETAILS.

**METRIC**  
 WHOLE NUMBERS INDICATE MILLIMETRES  
 DECIMALIZED NUMBERS INDICATE METRES



|  |                     |  |  |                |         |        |
|--|---------------------|--|--|----------------|---------|--------|
|  | WATERMAIN           |  |  | HYDRO          |         |        |
|  | HYDRANT             |  |  | M.T.S.         |         |        |
|  | VALVE               |  |  | PROPERTY LINE  |         |        |
|  | LAND DRAINAGE SEWER |  |  | SURVEY BAR     |         |        |
|  | WASTE WATER SEWER   |  |  | LIGHT STANDARD |         |        |
|  | MANHOLE             |  |  | HYDRO POLE     |         |        |
|  | CATCH BASIN         |  |  | GUY WIRE       |         |        |
|  | CURB INLET          |  |  | SIGN           |         |        |
|  | JUNCTIONS           |  |  | BUSH LINE      |         |        |
|  | CULVERT             |  |  | FENCE          |         |        |
|  | GAS                 |  |  | ELEVATION      | 231.334 | 32.231 |
|  | EXISTING            |  |  | LEGEND-PLAN    |         |        |
|  | PROPOSED            |  |  | LEGEND-PROFILE |         |        |

**LOCATION APPROVED UNDERGROUND STRUCTURES**

SUPV. U/G STRUCTURES DATE COMMITTEE

**NOTE:**  
 LOCATION OF UNDERGROUND STRUCTURES AS SHOWN ARE BASED ON THE BEST INFORMATION AVAILABLE BUT NO GUARANTEE IS GIVEN THAT ALL EXISTING UTILITIES ARE SHOWN OR THAT THE GIVEN LOCATIONS ARE EXACT. CONFIRMATION OF EXISTENCE AND EXACT LOCATION OF ALL SERVICES MUST BE OBTAINED FROM THE INDIVIDUAL UTILITIES BEFORE PROCEEDING WITH CONSTRUCTION.

|       |                   |          |     |
|-------|-------------------|----------|-----|
| B.M.  | 34-014            |          |     |
| ELEV. | 231.543           |          |     |
| NO.   | REVISIONS         | DATE     | BY  |
| 1     | ADDENDUM 1        | 15/01/04 | RMK |
| 0     | ISSUED FOR TENDER | 06/01/04 | RMK |
| A     | ISSUED FOR REVIEW | 22/12/03 | RMK |

**KGS GROUP** CONSULTING ENGINEERS & PROJECT MANAGERS

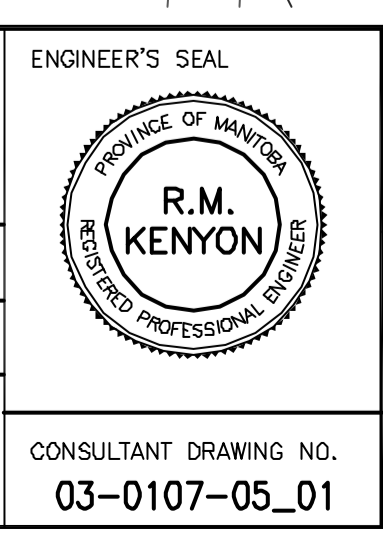
WINNIPEG (204) 896-1209  
 THUNDER BAY (807) 345-2233

DESIGNED BY: D.A. CHECKED BY: R.Ke.  
 DRAWN BY: A.M. APPROVED BY:

HOR. SCALE: 1:200  
 VERTICAL: 1:200

RELEASED FOR CONSTRUCTION: DATE

CONSULTANT DRAWING NO. 03-0107-05\_01



**THE CITY OF WINNIPEG**  
 WATER & WASTE DEPARTMENT

**DUMOULIN OUTFALL RIVERBANK STABILITY IMPROVEMENTS SITE PLAN**  
 SHOWING LOCATION OF RIVERBANK IMPROVEMENTS

SHEET 01 OF 07  
 CAD FILE DRAWING NUMBER 03-0107-05.100-01rev1  
 CITY DRAWING NUMBER LD-2983

COWLEGGEND