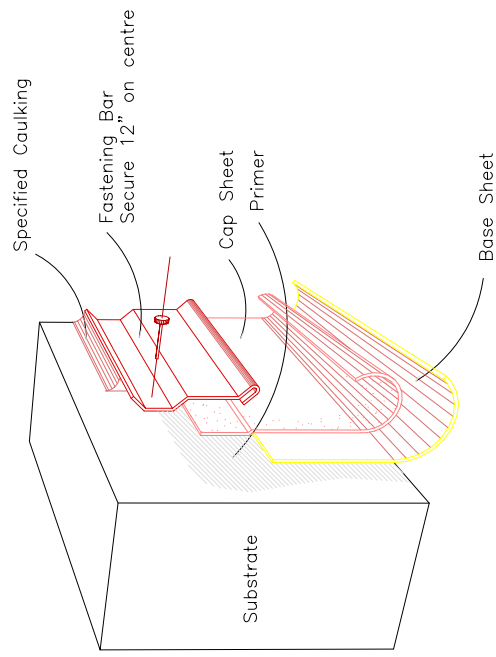
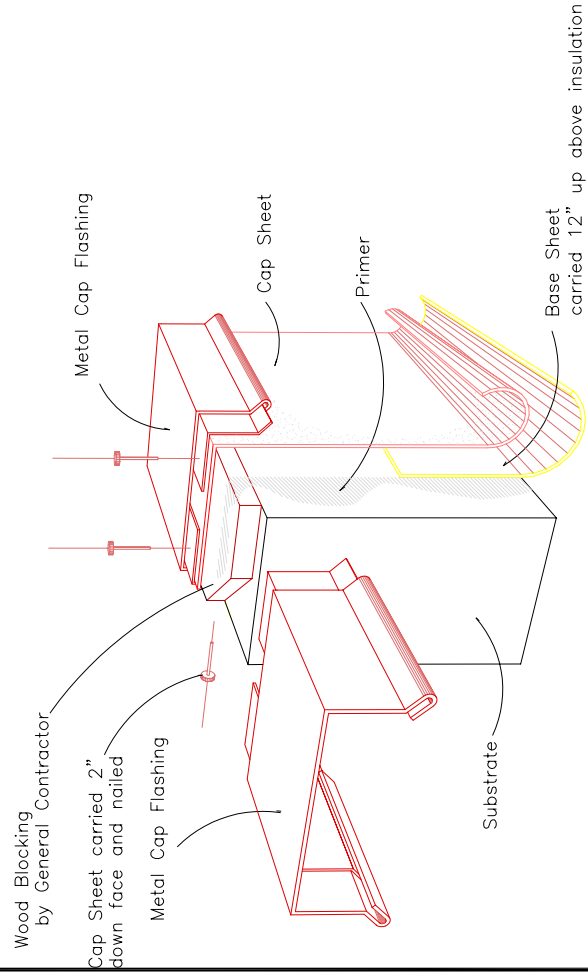


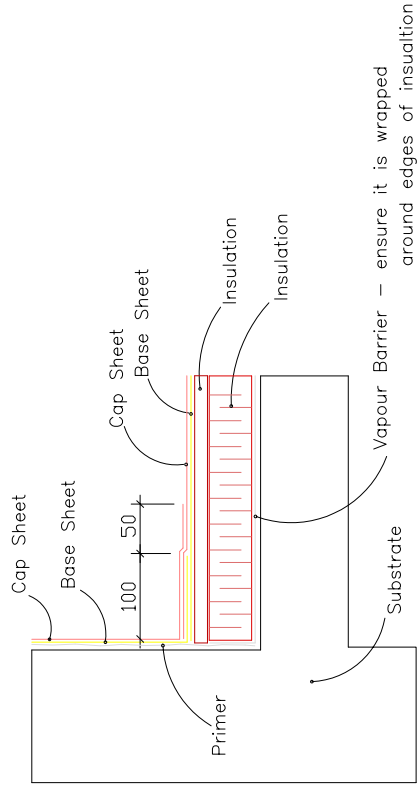
Typical Fastening Bar



Typical Concrete Parapet

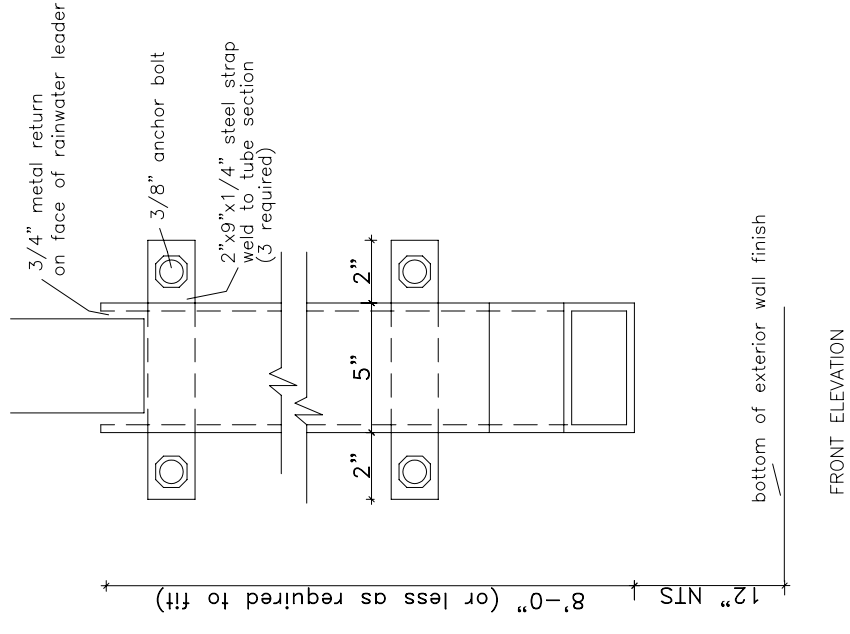


Typical Roof Edge Detail

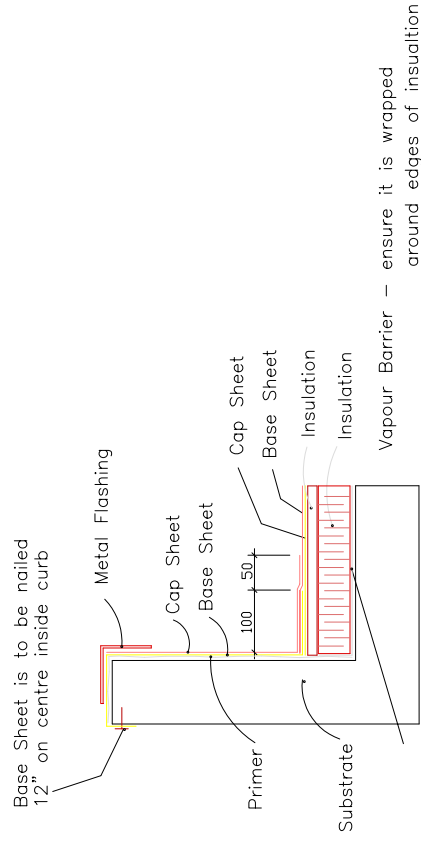


Note: Modified Bitumen stipping used in conjunction with 4 ply felt membrane. is to have base sheet extend 12" onto flat and cap sheet 18" onto flat.

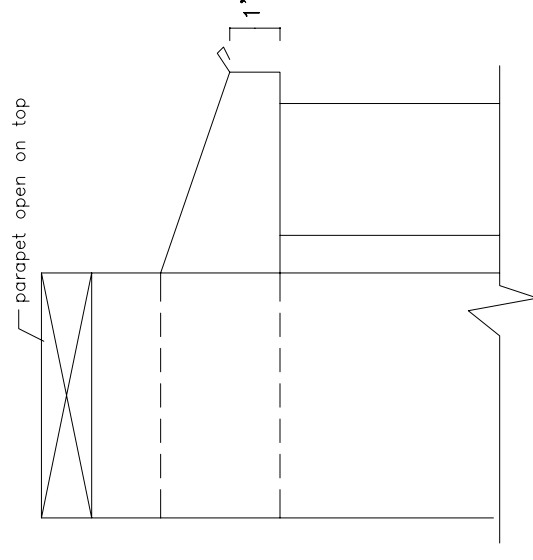
Structural Down Pipes



Mechanical Curb Flashing



Typical Scupper



Notes:
Scupper shall be 4 sided through parapet
Scupper shall be minimum 8" wide x 6" high

Note: Details are to be similar for inverted roof assemblies

**AGASSIZ
CONSULTING GROUP**

809 Pipeline Road, Winnipeg, Manitoba
Phone: 697-8091 Fax: 697-8039

Project: **Westdale Community Center
550 Dale Blvd.
Winnipeg, MB**

Date: **February 27, 2004**

Drawing No. **D-1**

File no: **3497-04** Scale: **N.T.S.**