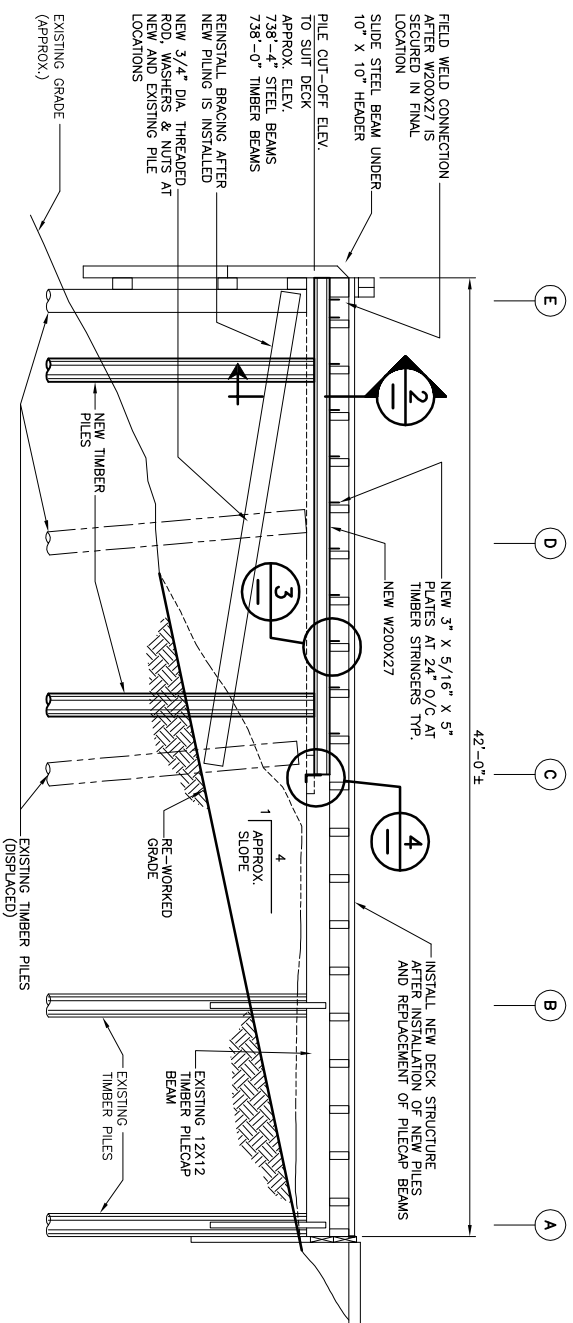


RED RIVER

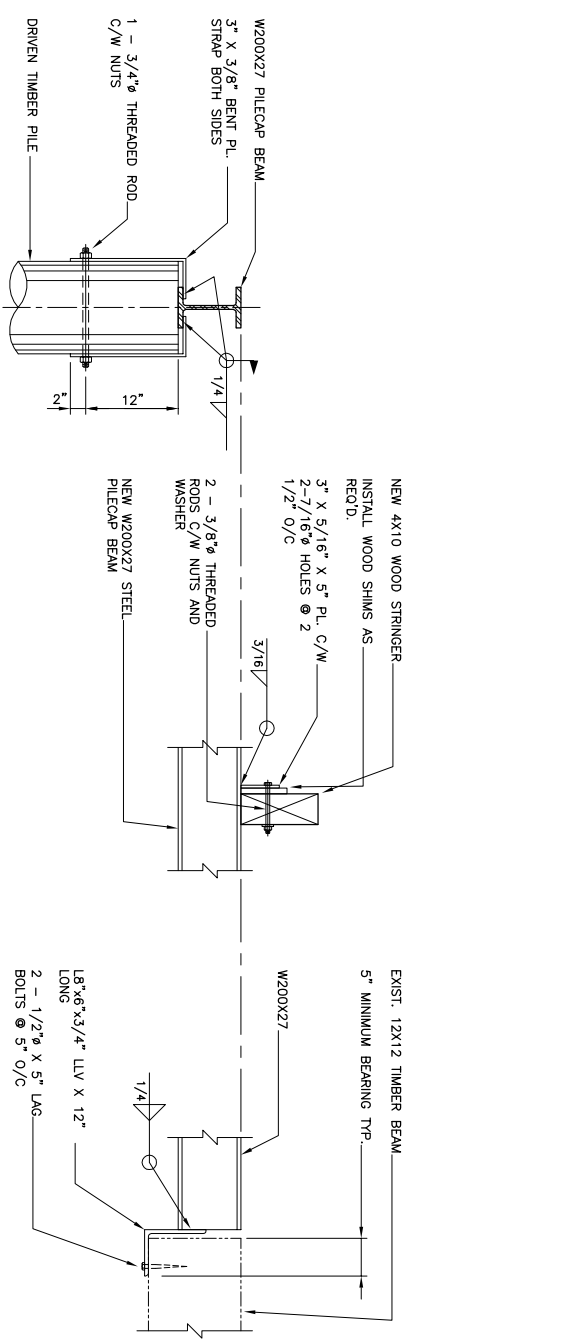
**PLAN - EXISTING PILE LAYOUT**  
SCALE: 1"=10'-0"

- LEGEND**
- EXISTING TIMBER PILE DESIGNATION CODES
- B DESIGNATES TIMBER PILECAP BEARING LESS THAN 3"
  - S DESIGNATES SPLUT TIMBER PILE
  - T DESIGNATES TILTED TIMBER PILE (8X:1H TO 6X:1H)
- REMOVE EXISTING 12x12 TIMBER PILE CAPS AND SALVAGE GOOD SECTIONS FOR RE-USE AS DIRECTED BY THE CONTRACT ADMINSTRATOR. INSTALL NEW W200X27
- REMOVE EXISTING 12x12 TIMBER PILE CAPS AND REINSTALL AFTER DRIVING NEW PILES

- DRIVEN TIMBER PILES**
1. FOUNDATIONS SHALL BE DRIVEN TIMBER PILES AS SHOWN ON DRAWINGS.
  2. TIMBER PILES SHALL BE DRIVEN TO REFUSAL. REFUSAL ELEVATION IS APPROXIMATELY 707' GEODETIC.
  3. TIMBER PILES SHALL BE IN ACCORDANCE WITH CAN-066 (LATEST) AND PRESURE TREATED IN ACCORDANCE WITH CAN/CSA-080 (LATEST).
  4. THE PILING CONTRACTOR SHALL BE RESPONSIBLE TO VERIFY THE EXISTENCE AND LOCATION OF ALL UNDERGROUND SERVICES IN PILING AREA WHETHER SHOWN OR NOT. EXPOSE ALL SERVICES CLOSE TO PILING AS REQUIRED. THE PILING CONTRACTOR SHALL BE RESPONSIBLE FOR REPAIRING ANY DAMAGE RESULTING FROM PILING OPERATIONS.
  5. PILES SHALL NOT BE MORE THAN 2" OUT OF POSITION LATERALLY AT THE TOP AND NOT MORE THAN 2% OUT OF PLUMB.
  6. SPLUT OR SHATTERED PILES SHALL BE REJECTED.
  7. DO NOT SPLICE PILES WITHOUT APPROVAL OF THE DESIGN ENGINEER.
  8. PRE-BORE ALL PILES 10'-0" PILES.
  9. RESET PILES LIFTED DURING DRIVING OF ADJACENT PILES.
  10. CUT-OFF PILES NEAR AND SQUARE AT ELEVATIONS INDICATED. TREAT EXPOSED ENDS WITH PRESERVATIVE.



**SECTION 1 - PILE AND PILECAP BEAM REPLACEMENT**  
SCALE: 1/4"=1'-0"



**SECTION 2 - PILECAP BEAM**  
SCALE: 1"=1'-0"

**SECTION 3 - DETAIL**  
SCALE: 1"=1'-0"

**SECTION 4 - DETAIL**  
SCALE: 1"=1'-0"

<b>KGS CONSULTING ENGINEERS &amp; PROJECT MANAGERS</b> WINNIPEG THUNDER BAY		<b>R.T. MARTIN</b> REGISTERED PROFESSIONAL ENGINEER		<b>THE CITY OF WINNIPEG</b> PLANNING PROPERTY AND DEVELOPMENT WINNIPEG SERVICES DEPARTMENT	
DESIGNED BY: R.M. DRAWN BY: R.N. HOR. SCALE: AS NOTED VERTICAL: FEB. 4/04		CHECKED BY: APPROVED BY: REFERRED FOR CONSTRUCTION:		CONSULTANT DRAWING NO. 03-0107-13-03	
NO. 0 REVISIONS		DATE:		<b>ALEXANDER DOCK</b> SOUTH HALF DOCK REHABILITATION EXISTING PILING PLAN SECTIONS AND DETAILS	
SHEET 3 OF 3		CAD FILE DRAWING NUMBER 03-0107-13-03.dwg		CITY DRAWING NUMBER P-	