

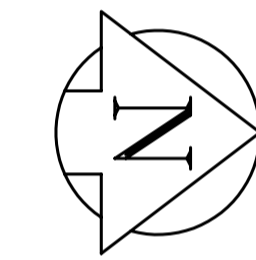
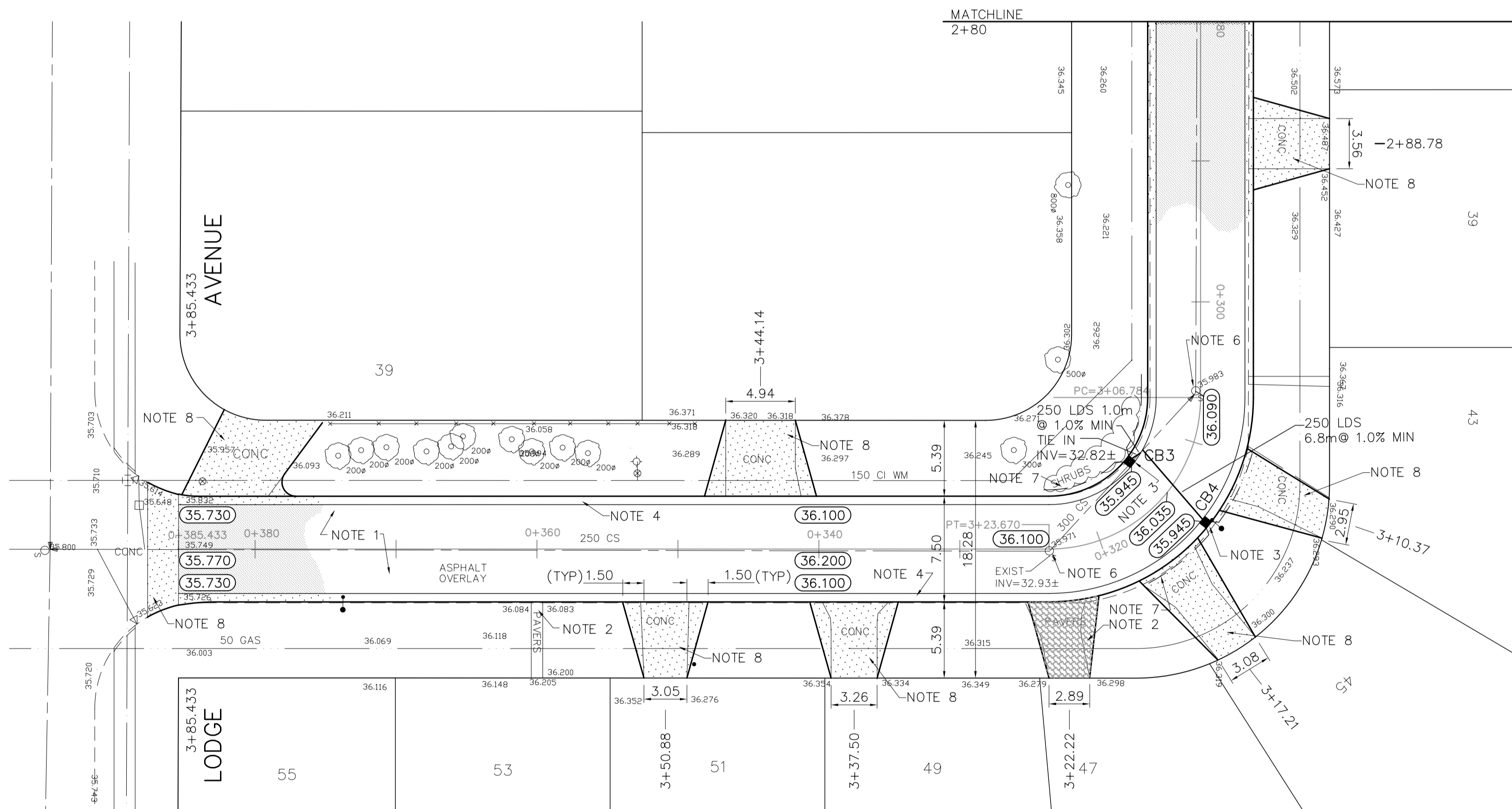
DESCRIPTION	RIM	INVERT			
		NORTH	SOUTH	EAST	WEST
CB 3	35.945	34.345			
CB 4	35.945		34.345		

REFERENCE NOTES

- A. PAVEMENT DIMENSIONS ARE TO BACK OF CURB
- B. ADD 200.000 TO OBTAIN GEODETIC DATUM
- C. BASELINE IS CENTRE LINE RIGHT-OF-WAY
- D. PROPERTY LINES OBTAINED FROM CITY OF WINNIPEG L.B.I.S., AND NO SCALE FACTOR WAS APPLIED.

CONSTRUCTION NOTES

- 1. REMOVE EXISTING PAVEMENT AND CONSTRUCT NEW 150mm ASPHALTIC PAVEMENT (TYPE 1A).
- 2. REMOVE AND REINSTALL EXISTING PAVING STONES
- 3. INSTALL NEW CURB AND GUTTER INLET (SD224) c/w NEW 250 LEAD TO EXISTING 300mm COMBINED SEWER.
- 4. CONSTRUCT NEW CONCRETE BARRIER CURB AND GUTTER.
- 5. ADJUST EXISTING WATER VALVE TO GRADE.
- 6. ADJUST EXISTING MANHOLE/CATCHBASIN TO GRADE.
- 7. INSTALL 150 SUBDRAIN.
- 8. REMOVE EXISTING CONCRETE AND PLACE NEW 150mm REINFORCED CONCRETE PAVEMENT.



APEGM
Certificate of Authorization
 No. 730
 Expires 2003/04/30
 Signature: _____
 Date: _____

METRIC

WHOLE NUMBERS INDICATE MILLIMETRES
 DECIMALIZED NUMBERS INDICATE METRES

EXISTING	LEGEND - PLAN	PROPOSED	EXISTING	LEGEND - PLAN	PROPOSED	EXISTING	LEGEND - PROFILE	PROPOSED
150 mm W.M.	WATERMAIN	150 mm W.M.	HYDRO	M.T.S.	150 mm W.M.	WATERMAIN	HYDRANT	
300mm L.D.S.	LAND DRAINAGE SEWER	300mm L.D.S.	CONCRETE	ASPHALT	300mm L.D.S.	LAND DRAINAGE SEWER	VALVE	
250mm W.W.S.	WASTEWATER SEWER	250mm W.W.S.	PROPERTY LINE	SURVEY BAR	250mm W.W.S.	WASTE WATER SEWER	PROFILE	
MANHOLE		232 750	ELEVATION	(2.750)		N/W GUTTER		
CATCH BASIN			TREE			S/E GUTTER		
CURB INLET			SIDEWALK RAMP			N/W PROPERTY LINE		
JUNCTIONS			CONCRETE SIDEWALK			S/E PROPERTY LINE		
CULVERT			FENCE					
GAS								

LOCATION APPROVED UNDERGROUND STRUCTURES

SUPV. U/G STRUCTURES COMMITTEE DATE

NOTE:
 LOCATION OF UNDERGROUND STRUCTURES AS SHOWN ARE BASED ON THE BEST INFORMATION AVAILABLE, BUT NO GUARANTEE IS GIVEN THAT ALL EXISTING UTILITIES ARE SHOWN OR THAT THE GIVEN LOCATIONS ARE EXACT. CONFIRMATION OF EXISTENCE AND EXACT LOCATION OF ALL SERVICES MUST BE OBTAINED FROM THE INDIVIDUAL UTILITIES BEFORE PROCEEDING WITH CONSTRUCTION.

NO.	REVISIONS	DATE	BY
1	ISSUED FOR CONSTRUCTION	APR 30/04	BC
A	ISSUED FOR REVIEW	MAR 30/04	BC

EARTH TECH

Earth Tech (Canada) Inc. Winnipeg, Manitoba 204.477.5381

DESIGNED BY: BC CHECKED BY: TGS

DRAWN BY: BC APPROVED BY:

HOR. SCALE: 1=250
 VERTICAL: 1=10

RELEASED FOR CONSTRUCTION BY: _____

DATE: 2004/01/9

ENGINEER'S SEAL
 PROVINCE OF MANITOBA
T.G. SMITH
 REGISTERED PROFESSIONAL ENGINEER

CONSULTANT DRAWING NO. CT08

THE CITY OF WINNIPEG
PUBLIC WORKS DEPARTMENT
ENGINEERING DIVISION

HARMON AVENUE
 MOUNT ROYAL ROAD TO LODGE AVENUE

PAVEMENT RECONSTRUCTION
 PLAN/PROFILE
 STATION 2+80 TO LODGE AVENUE

CITY DRAWING NUMBER SHEET 2 OF 2