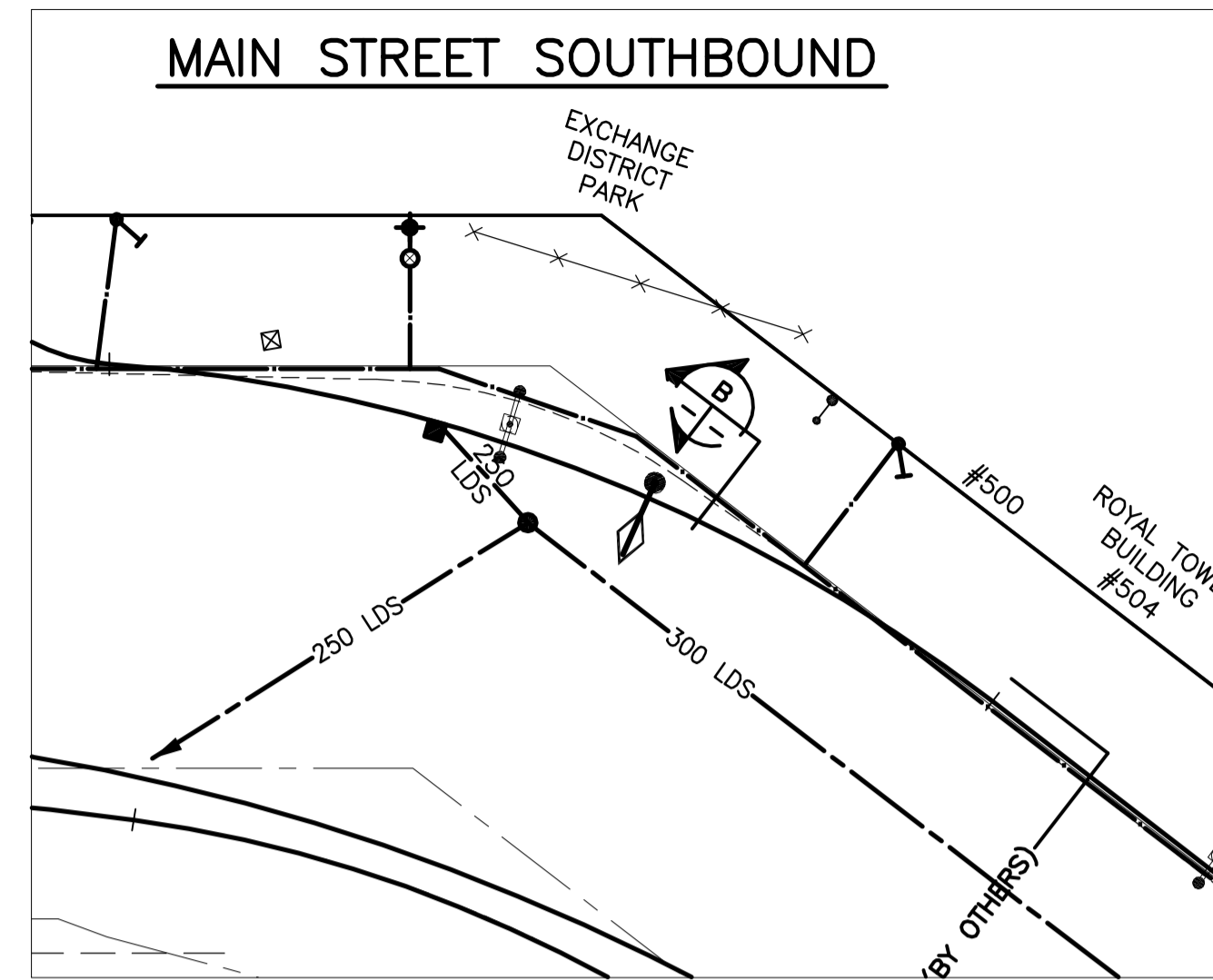
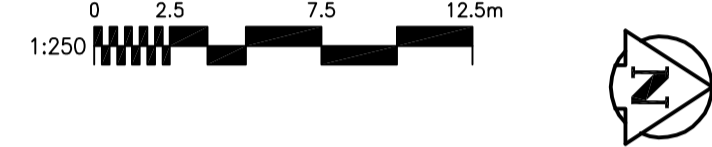
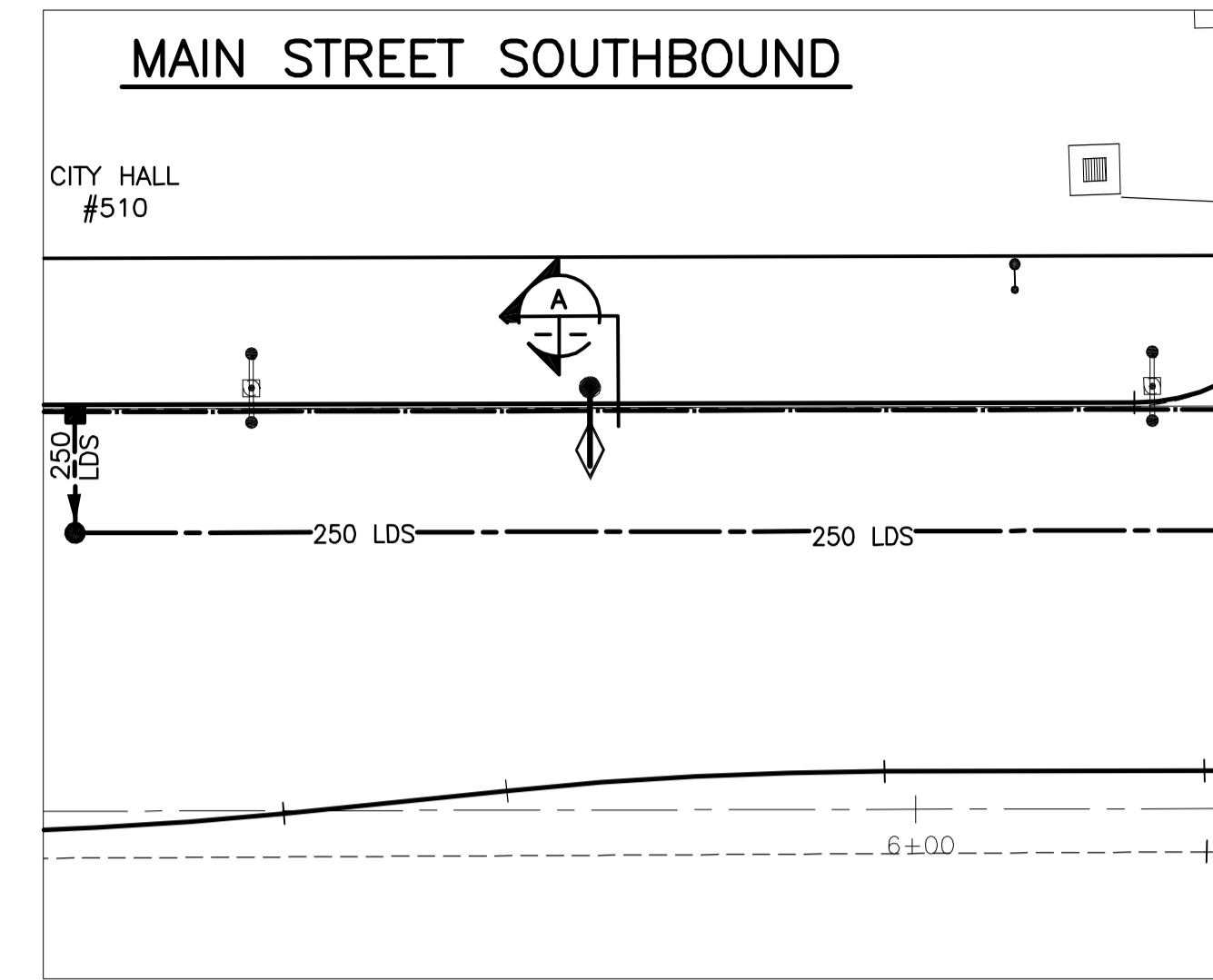
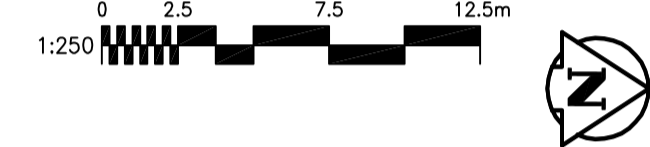


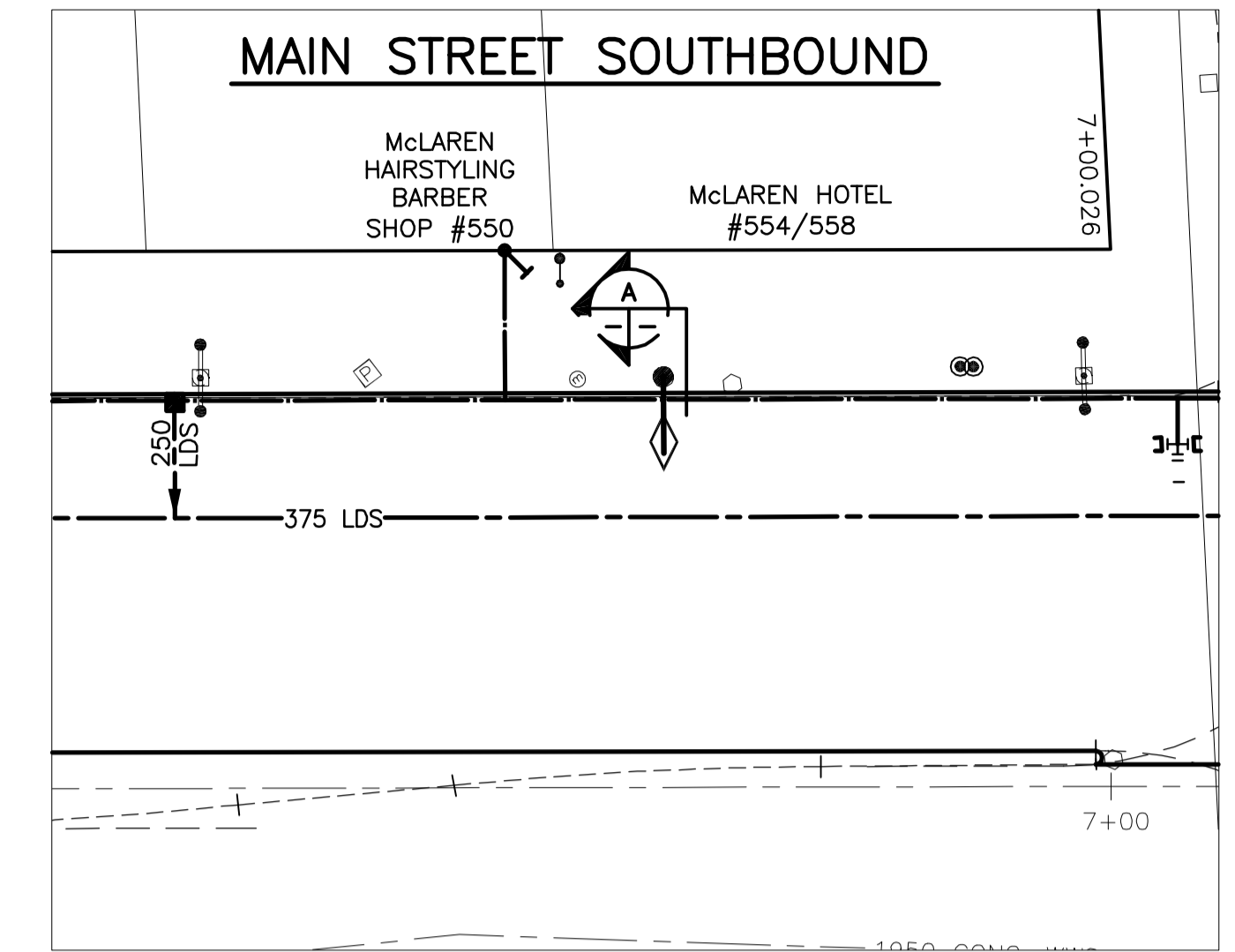
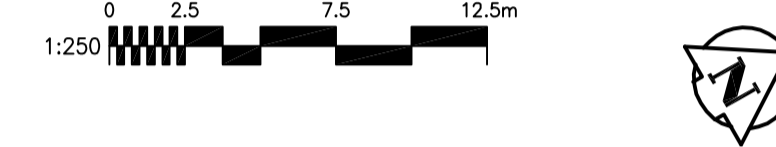
SIGN STRUCTURE - STA. 3+36.00



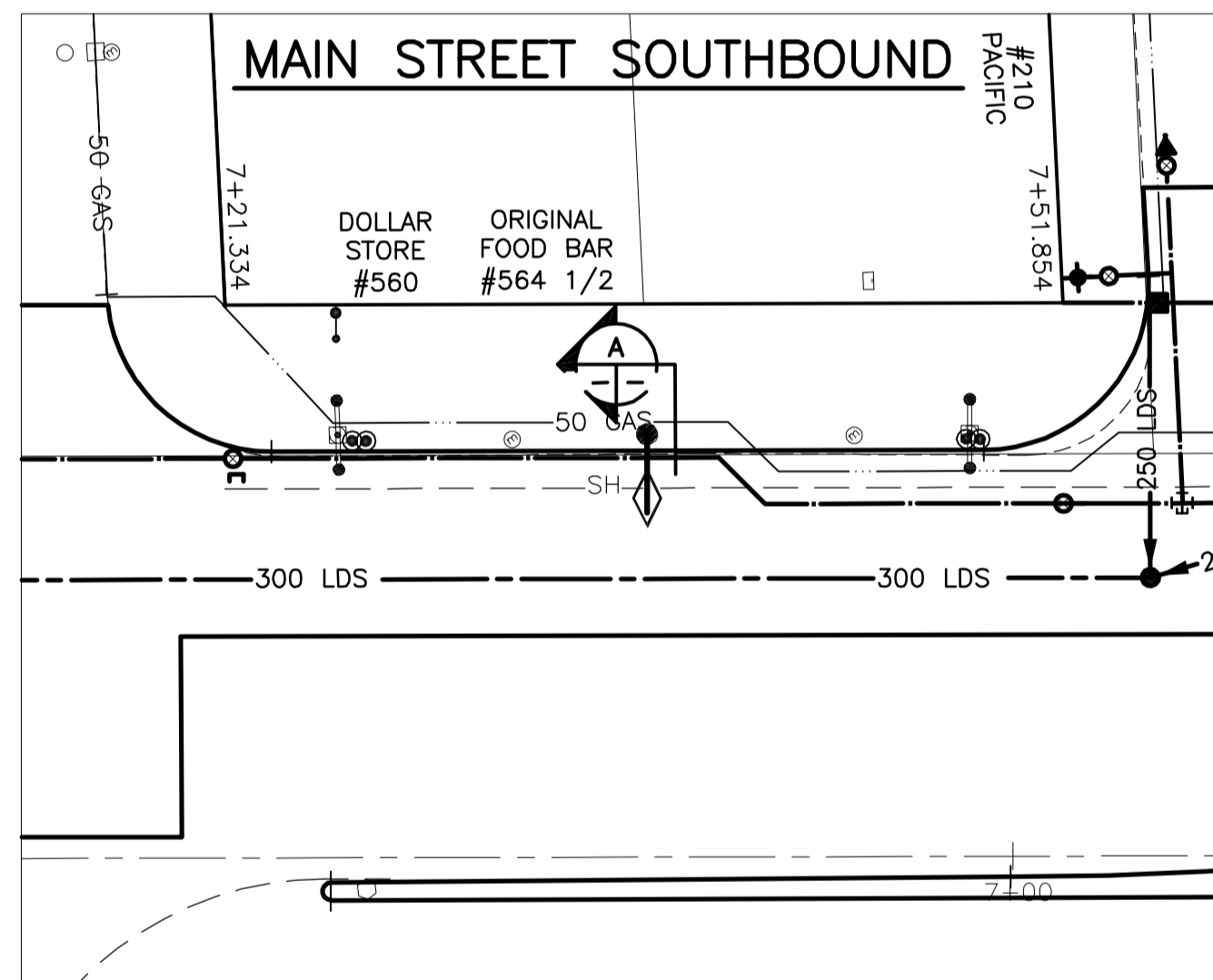
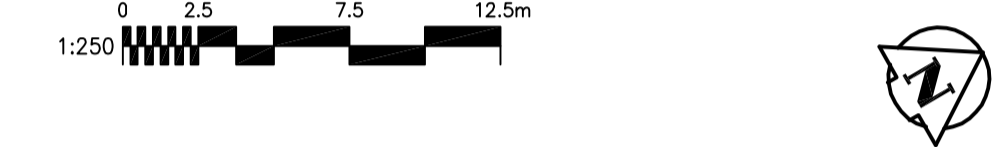
SIGN STRUCTURE - STA. 4+34.70



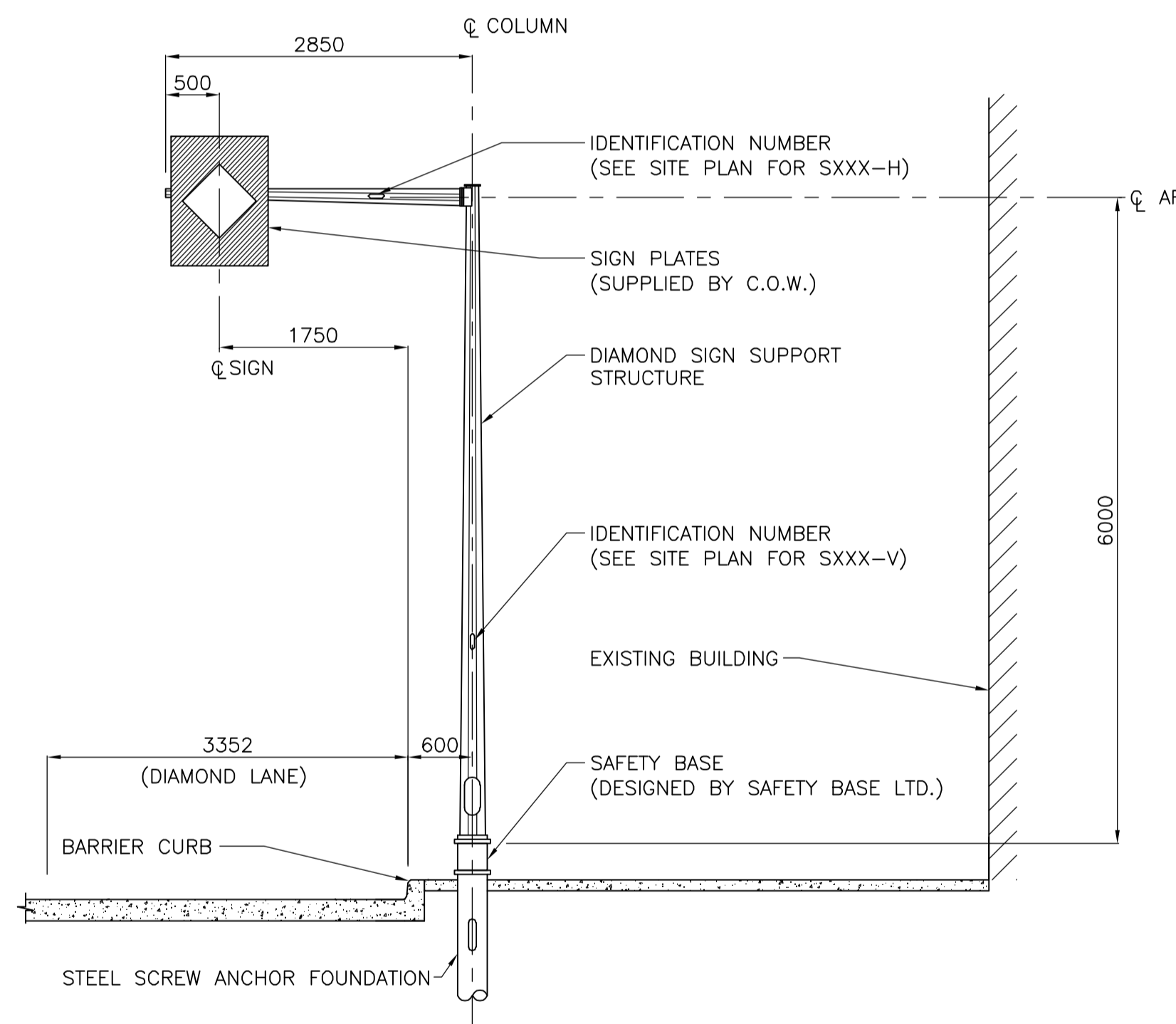
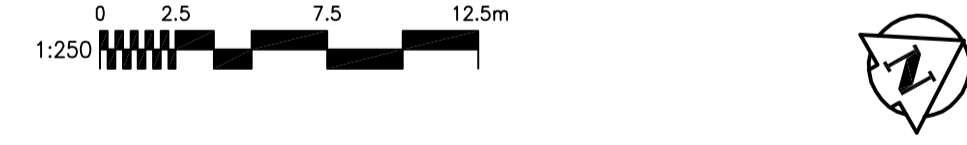
SIGN STRUCTURE - STA. 5+88.20



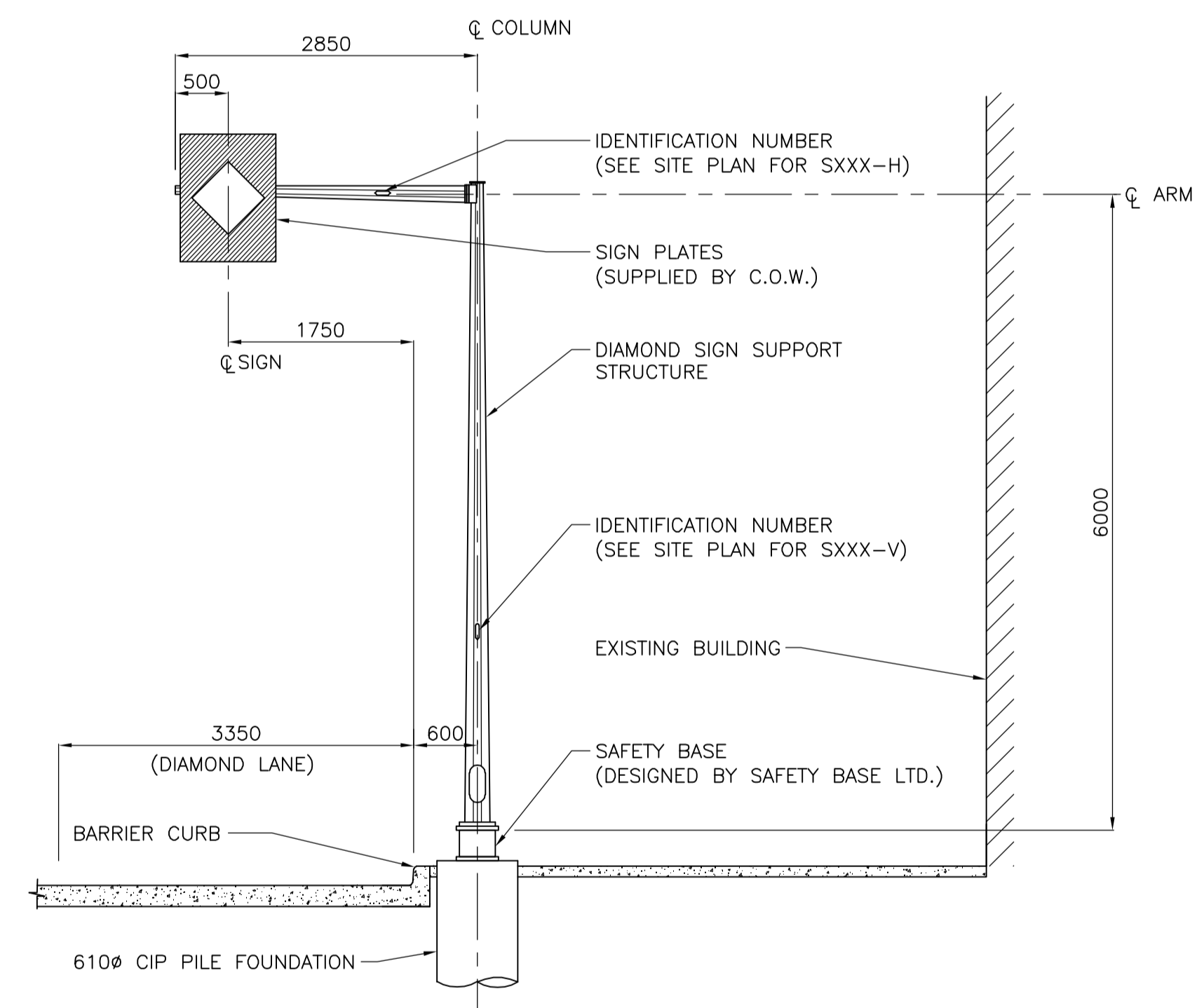
SIGN STRUCTURE - STA. 6+83.30



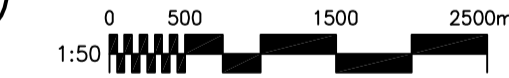
SIGN STRUCTURE - STA. 7+36.70



TYPICAL SECTION A



TYPICAL SECTION B



STRUCTURE IDENTIFICATION

STA. 3+36.00	S736-MAIN STREET S/B 22.0m S. OF BANNATYNE AVE.
STA. 4+34.70	S738-MAIN STREET S/B 35.0m S. OF WILLIAM AVE.
STA. 5+88.20	S739-MAIN STREET S/B 35.0m S. OF JAMES AVE.
STA. 6+83.30	S740-MAIN STREET S/B 30.0m S. OF RUPERT AVE.
STA. 7+36.70	S741-MAIN STREET S/B 25.0m N. OF RUPERT AVE.

NOTE:

- FOR OVERHEAD DIAMOND LANE SIGN STRUCTURE FABRICATION DETAILS, REFER TO STANTEC DRAWING P-3247-15.
- ANCHOR BOLTS:
FOR CONCRETE PILE FOUNDATION: A325 BOLTS
TOP 300 THREADED 1500 LONG + 150 HOOK
HOT DIP GALVANIZED FULL LENGTH
FOR SCREW ANCHOR FOUNDATION: 4-25# ASTM A325 BOLTS GALVANIZED

WARNING

IF POWER EQUIPMENT OR EXPLOSIVES ARE TO BE USED FOR EXCAVATION ON THIS PROJECT THE CONTRACTOR MUST:
1) NOTIFY THE GAS COMPANY OF THE PROPOSED LOCATION OF EXCAVATION.
2) TAKE PRECAUTION TO AVOID DAMAGE TO GAS COMPANY INSTALLATIONS.
SEE PROVINCIAL REGULATION 140/92 FOR DETAILS

METRIC

WHOLE NUMBERS INDICATE MILLIMETRES
DECIMALIZED NUMBERS INDICATE METRES



Stantec Consulting Ltd.
No. 1301 Expiry: April 30, 2004

LOCATION APPROVED UNDERGROUND STRUCTURES

SUPV. U/G STRUCTURES COMMITTEE	DATE
NOTE: LOCATION OF UNDERGROUND STRUCTURES AS SHOWN ARE BASED ON THE BEST INFORMATION AVAILABLE BUT NO GUARANTEE IS GIVEN THAT ALL EXISTING UTILITIES ARE SHOWN OR THAT THE GIVEN LOCATIONS ARE EXACT. CONFIRMATION OF EXISTENCE AND EXACT LOCATION OF ALL SERVICES MUST BE OBTAINED FROM THE INDIVIDUAL UTILITIES BEFORE PROCEEDING WITH CONSTRUCTION.	

B.M. ELEV.	
NO. REVISIONS	DATE BY
1	ISSUED FOR CONSTRUCTION 04/03/24

Stantec Consulting Ltd.	
905 Waverley Street, Winnipeg, Manitoba Tel 204-489-5900 Fax 204-453-9012	
DESIGNED BY: M.J.B.	CHECKED BY: M.J.B.
DRAWN BY: V.M.	APPROVED BY: M.J.B.
HOR. SCALE: AS SHOWN	RELEASED FOR ORIGINAL CONSTRUCTION: SIGNED BY: F. COREY
VERTICAL:	DATE: FEBRUARY 09, 2004
	DATE: MARCH 25, 2004

ENGINEER'S SEAL
ORIGINAL SEALED BY: M.J. BOISSONNEAULT P. ENG. 04/03/24
CONSULTANT DRAWING NO. CW-69-599

THE CITY OF WINNIPEG PUBLIC WORKS DEPARTMENT ENGINEERING DIVISION

Winnipeg

MAIN STREET (SOUTH BOUND) LOMBARD AVE. TO DISRAELI FREEWAY DIAMOND LANE OVERHEAD SIGN STRUCTURE SITE PLANS, & SECTIONS

SHEET 13 OF 27
CAD FILE DRAWING NUMBER CW-69-599
CITY DRAWING NUMBER P-3247-13