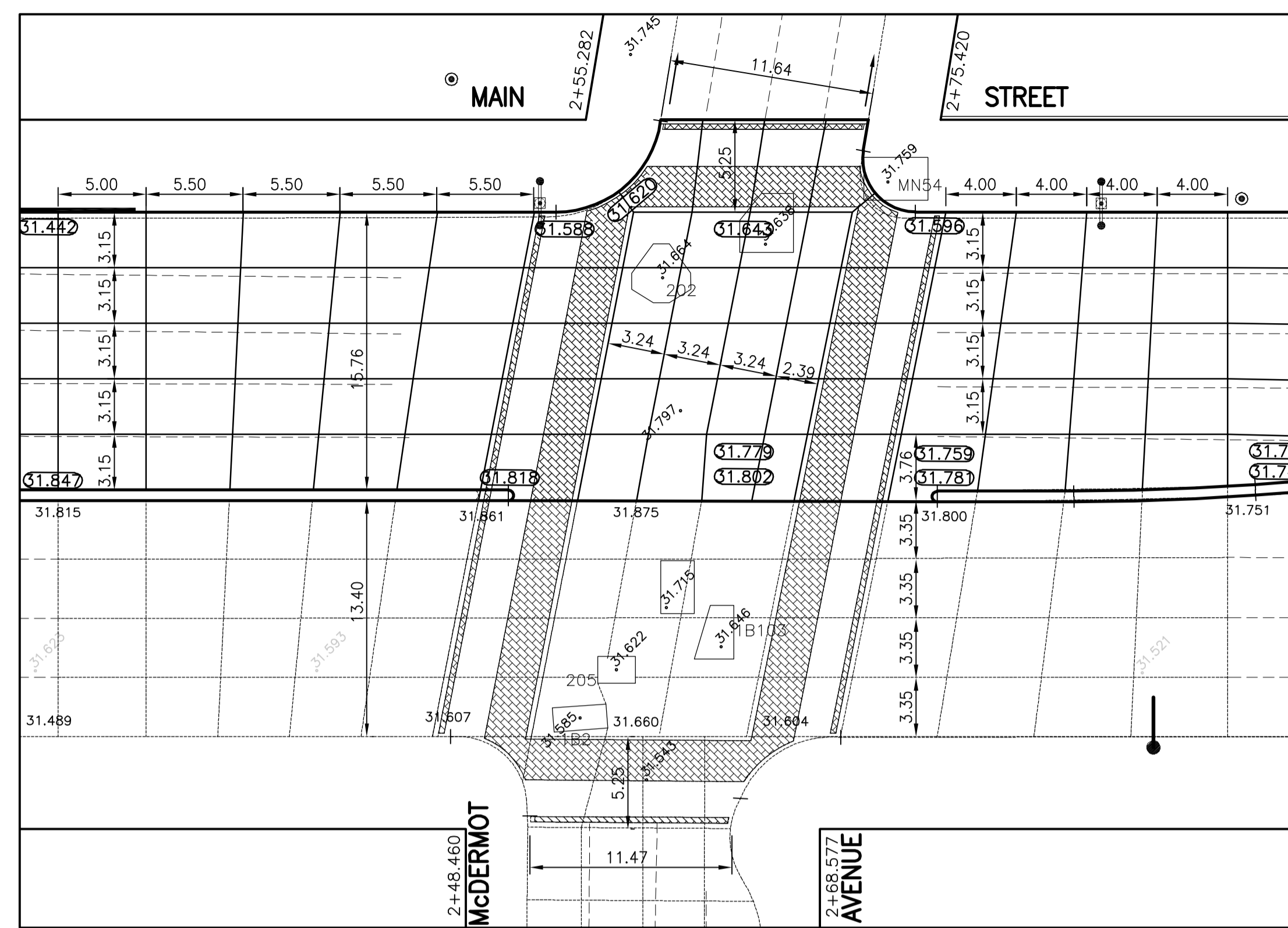
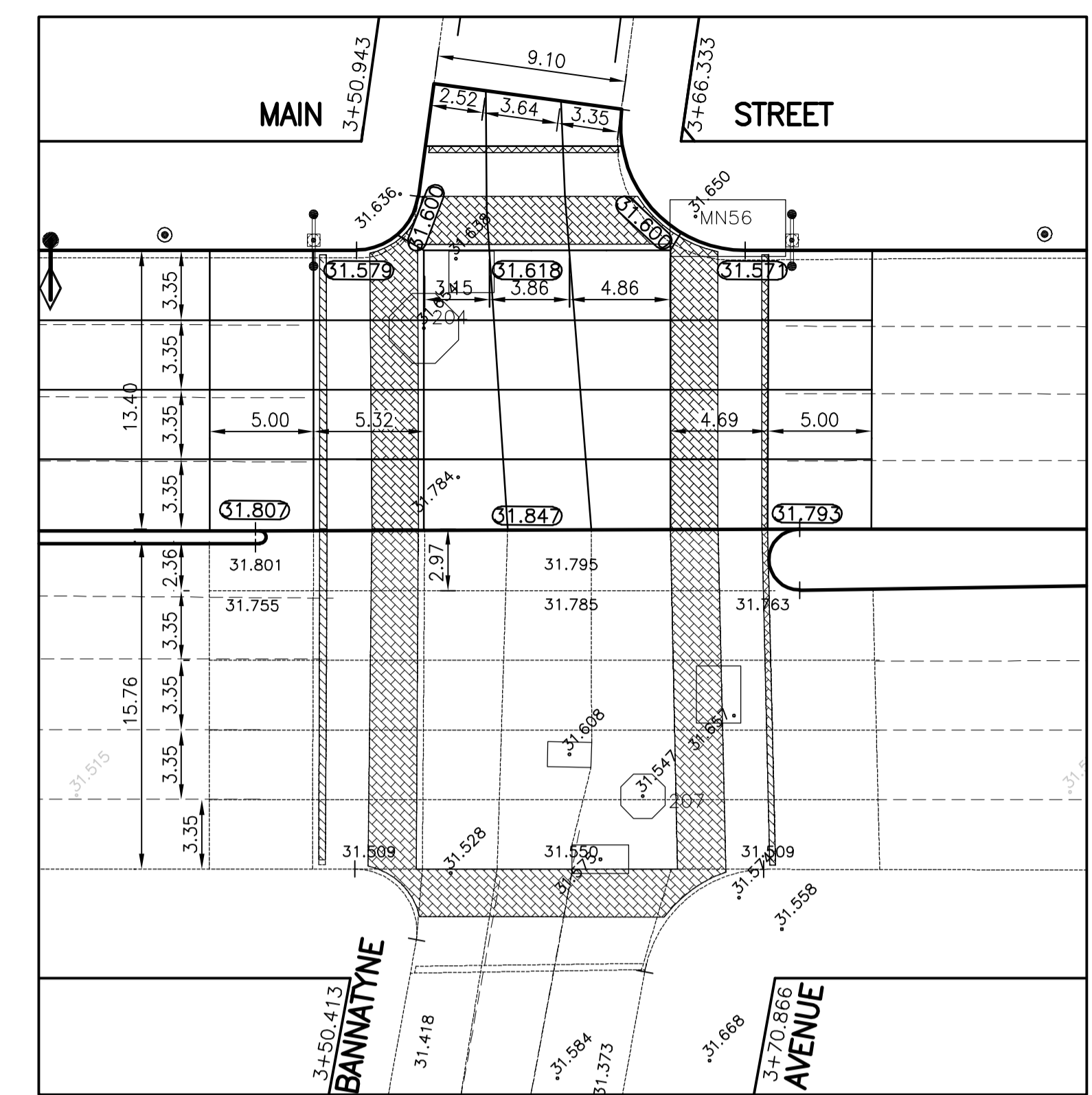


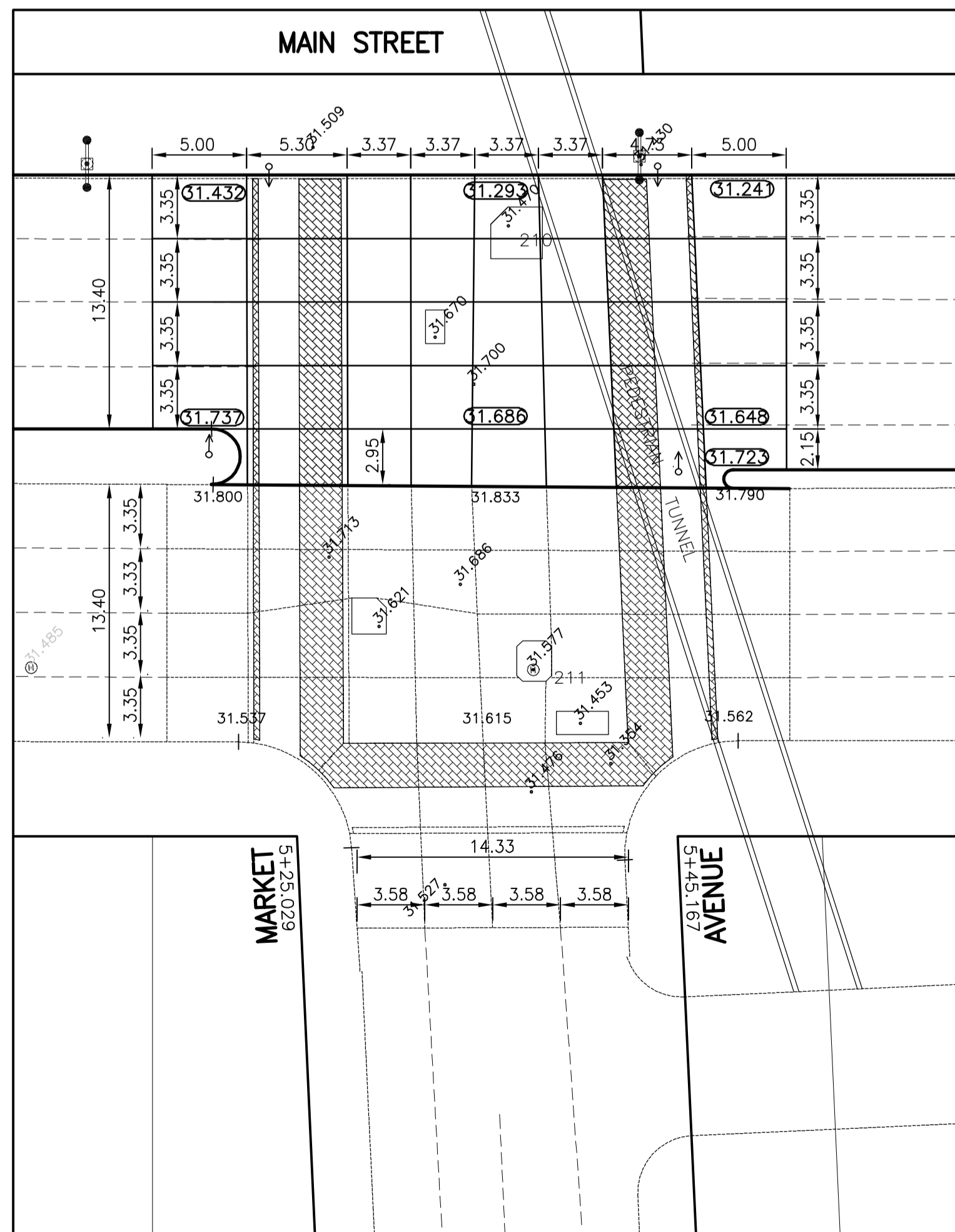
**LOMBARD AVENUE INTERSECTION JOINTS DETAIL**



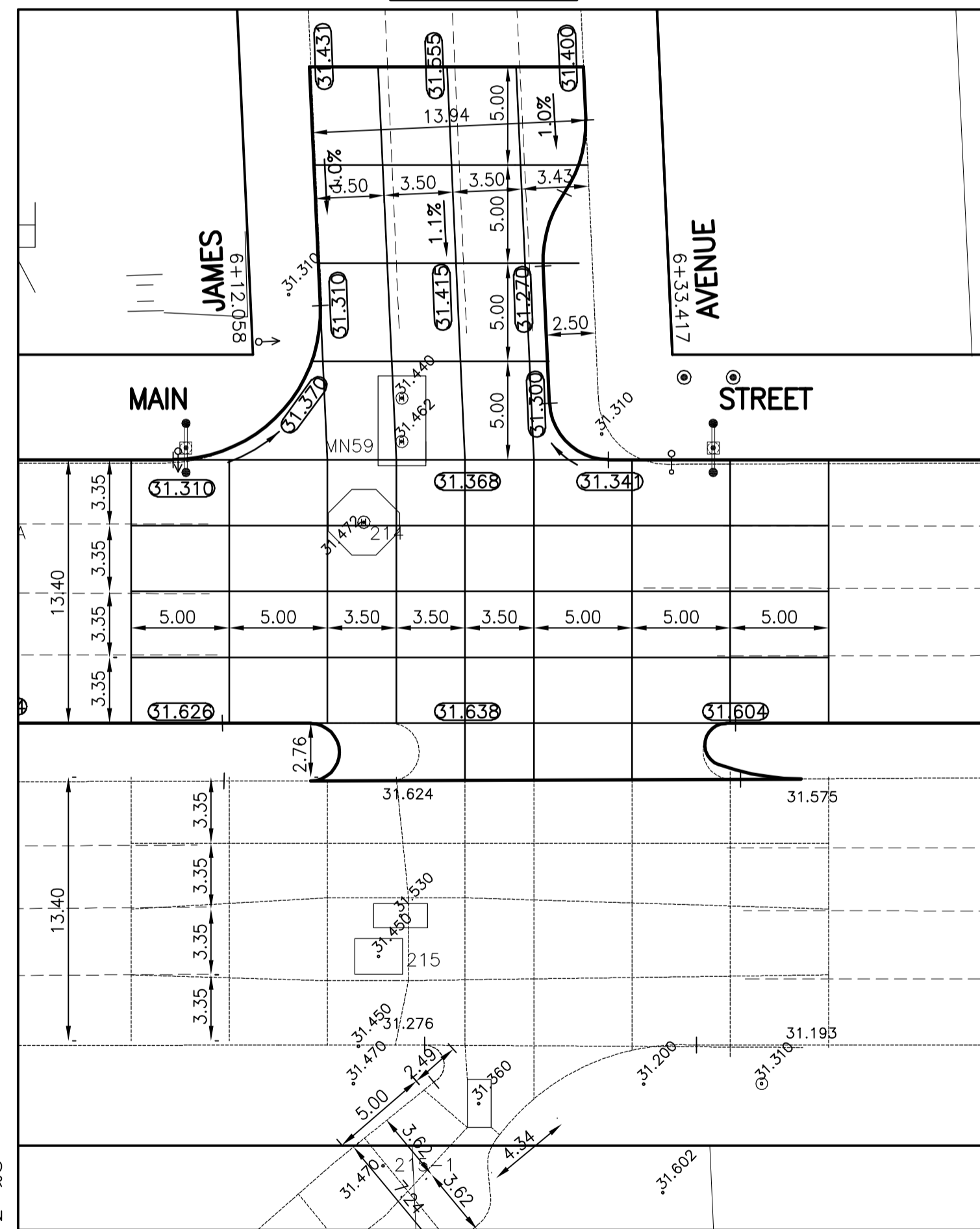
**McDERMOT AVENUE INTERSECTION JOINTS DETAIL**



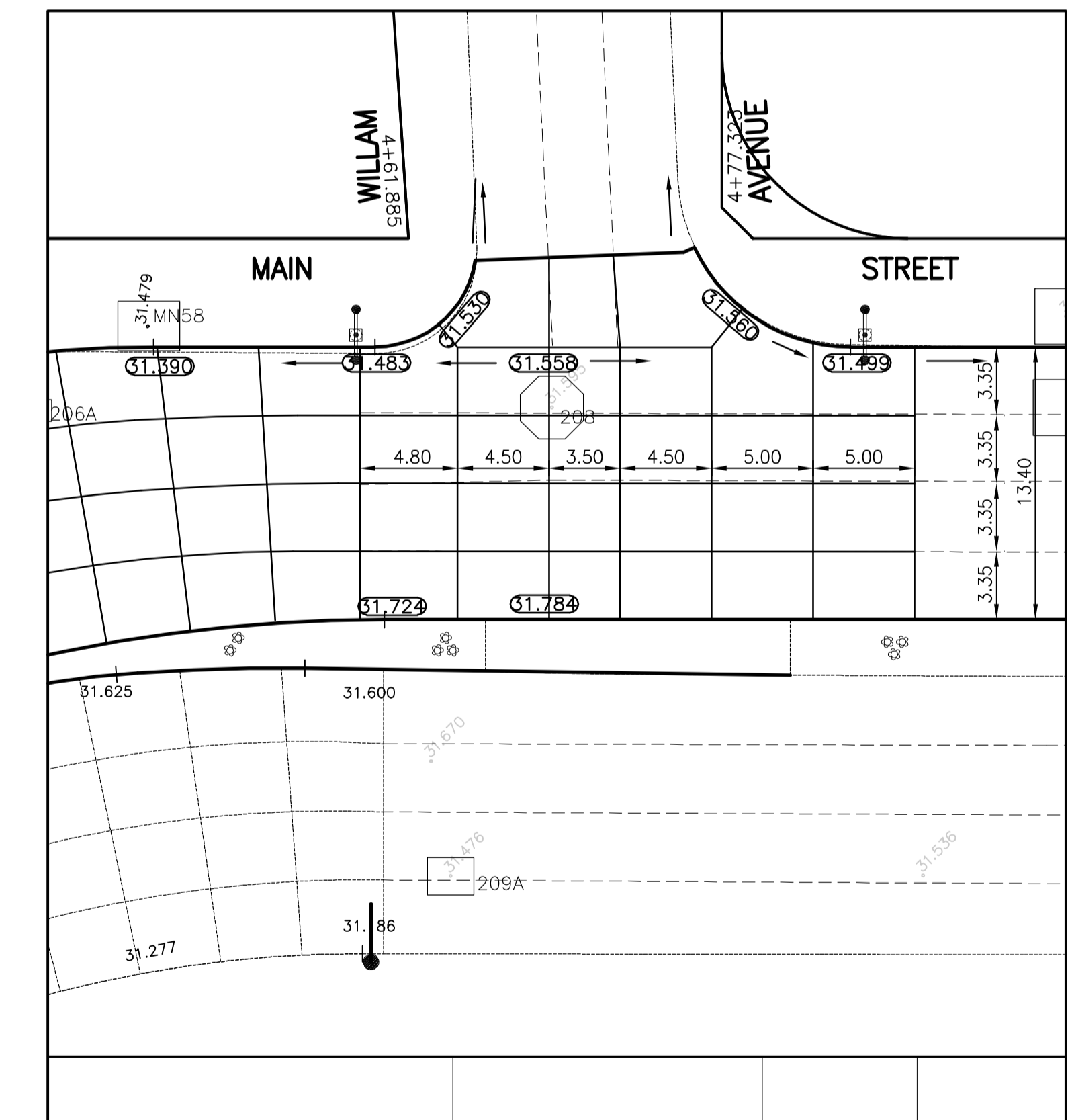
**BANNATYNE AVENUE INTERSECTION JOINTS DETAIL**



**MARKET AVENUE INTERSECTION JOINTS DETAIL**



**JAMES AVENUE INTERSECTION JOINTS DETAIL**



**WILLAM AVENUE INTERSECTION JOINTS DETAIL**

**APEGM**  
 Certificate of Authorization  
 Stantec Consulting Ltd.  
 No. 1301 Expiry: April 30, 2004

**WARNING**

IF POWER EQUIPMENT OR EXPLOSIVES ARE TO BE USED FOR EXCAVATION ON THIS PROJECT THE CONTRACTOR MUST:  
 1) NOTIFY THE GAS COMPANY OF THE PROPOSED LOCATION OF EXCAVATION.  
 2) TAKE PRECAUTION TO AVOID DAMAGE TO GAS COMPANY INSTALLATIONS.  
 SEE PROVINCIAL REGULATION 140/92 FOR DETAILS

**METRIC**

WHOLE NUMBERS INDICATE MILLIMETRES  
 DECIMALIZED NUMBERS INDICATE METRES

NOTE: CHAINAGES SHOWN ARE ALONG C OF R.O.W.

**LOCATION APPROVED UNDERGROUND STRUCTURES**

SUPV. U/G STRUCTURES COMMITTEE	DATE

NOTE:  
 LOCATION OF UNDERGROUND STRUCTURES AS SHOWN ARE BASED ON THE BEST INFORMATION AVAILABLE BUT NO GUARANTEE IS GIVEN THAT ALL EXISTING UTILITIES ARE SHOWN OR THAT THE GIVEN LOCATIONS ARE EXACT. CONFIRMATION OF EXISTENCE AND EXACT LOCATION OF ALL SERVICES MUST BE OBTAINED FROM THE INDIVIDUAL UTILITIES BEFORE PROCEEDING WITH CONSTRUCTION.

NO.	REVISIONS	DATE	BY

<b>Stantec Consulting Ltd.</b>		905 Waverley Street, Winnipeg, Manitoba Tel 204-489-5900 Fax 204-453-9012	
DESIGNED BY	V.M.	CHECKED BY	V.R.N.
DRAWN BY	V.M.	APPROVED BY	C.L.D.
HOR. SCALE:	1:250	RELEASED FOR ORIGINAL CONSTRUCTION:	SIGNED BY: F. COREY
DATE	FEBRUARY 09, 2004	DATE	MARCH 25, 2004

ENGINEER'S SEAL
ORIGINAL SEALED BY C.L.DYCK P. ENG. 03/25/2004
CONSULTANT DRAWING NO. CW-65-599

**THE CITY OF WINNIPEG**  
 PUBLIC WORKS DEPARTMENT  
 ENGINEERING DIVISION

**2004 PAVEMENT RECONSTRUCTION MAIN STREET (SOUTH BOUND)**  
 LOMBARD AVE. TO DISRAELI FREEWAY  
 INTERSECTION JOINT DETAILS 1

SHEET	9	OF	27
CAD FILE DRAWING NUMBER	CW-DTL-599		
CITY DRAWING NUMBER	P-3247-9		

V:\117\vector\11702090-2004 Main Street Reconstruction - Southbound\Acad\CW-DTL-599.dwg  
 2004-03-26 09:35AM By: vmaral