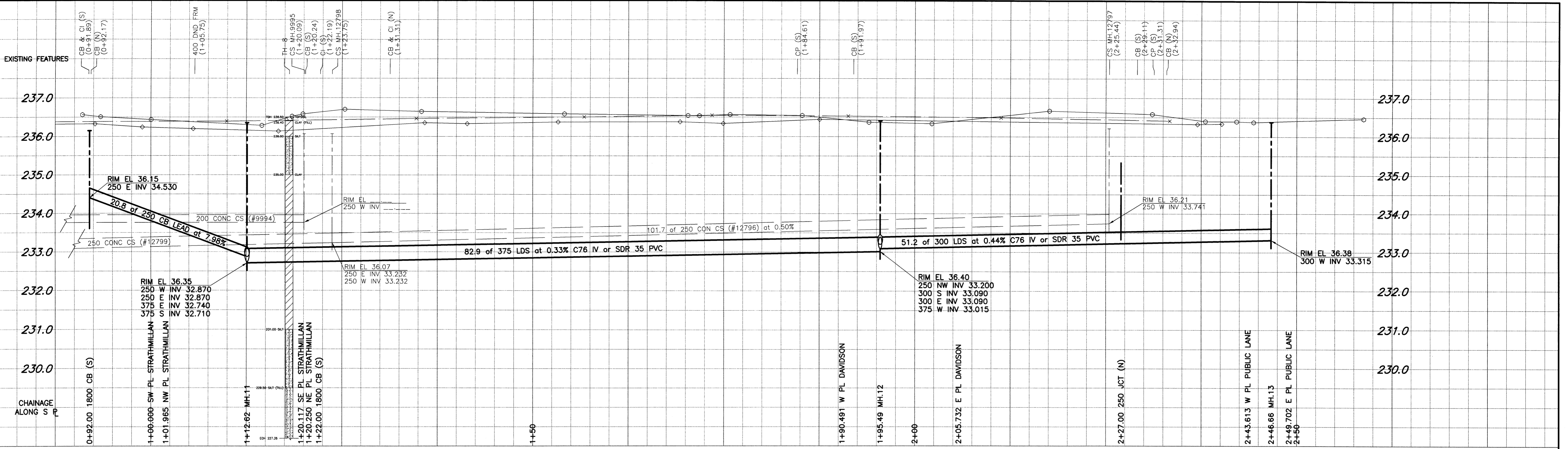
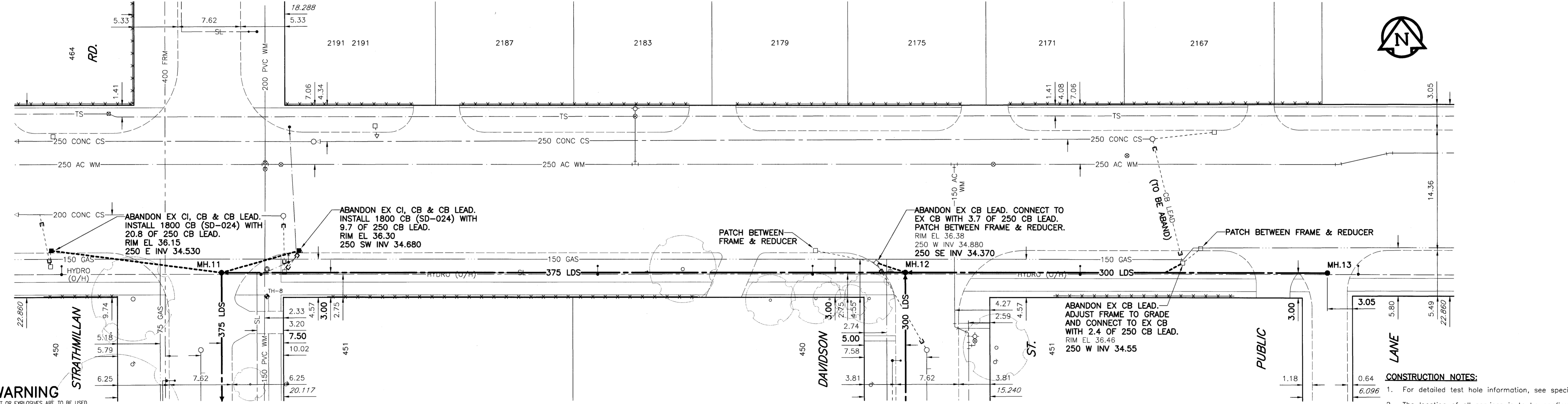


D. SIZE 22" x 34" (558mm x 863mm)



NESS AVENUE



FOR FURTHER INFO SEE DWG. No. LD-2930

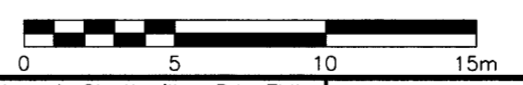
FOR FURTHER INFO SEE DWG. No. LD-2932

**WARNING**

IF POWER EQUIPMENT OR EXPLOSIVES ARE TO BE USED FOR EXCAVATION ON THIS PROJECT, THE CONTRACTOR MUST:  
 1) NOTIFY THE GAS COMPANY OF THE PROPOSED LOCATION OF EXCAVATION.  
 2) TAKE PRECAUTION TO AVOID DAMAGE TO GAS COMPANY INSTALLATIONS.  
 SEE PROVINCIAL REGULATION 140/92 FOR DETAILS.

**CONSTRUCTION NOTES:**

1. For detailed test hole information, see specifications.
2. The location of all services is to be confirmed in the field.
3. Install new sewers and catchbasin leads by trenchless methods wherever possible.
4. Renew/Rehabilitate catchbasins & renew catchbasin leads where noted.



**METRIC**  
 WHOLE NUMBERS INDICATE MILLIMETRES  
 DECIMALIZED NUMBERS INDICATE METRES

**APEGM**  
 Certificate of Authorization  
 UMA Engineering Ltd.  
 No. 256 Expiry: April 30, 2004

Bid Opportunity No. 140-2004

150 mm WM	WATERMAIN	150 mm WM	HYDRO	150 mm WM	WATERMAIN
Hydrant	HYDRANT	Valve	MTS	Hydrant	HYDRANT
300 mm LDS	LAND DRAINAGE SEWER	300 mm LDS	CONCRETE	300 mm LDS	LAND DRAINAGE SEWER
250 mm WWS	WASTE WATER SEWER	250 mm WWS	ASPHALT	250 mm WWS	WASTE WATER SEWER
Manhole	MANHOLE	Catch Basin	CURB STOP	Profile	Profile
Catch Basin	CATCH BASIN	Curb Inlet	Reducer	North/West	NORTH/WEST
Curb Inlet	CURB INLET	Culvert	Coupling	South/East	SOUTH/EAST
Culvert	CULVERT	Survey Bar	Anode	Lamp Standard	LAMP STANDARD
Survey Bar	SURVEY BAR	Pipe Abandonments	WM Monitoring Station	Tree	TREE
Pipe Abandonments	PIPE ABANDONMENTS	Existing	Legend - Plan	Existing	Legend - Profile
Existing	LEGEND - PLAN	Proposed	Legend - Plan	Proposed	Legend - Profile

**LOCATION APPROVED UNDERGROUND STRUCTURES**

DATE: \_\_\_\_\_

NOTE: LOCATION OF UNDERGROUND STRUCTURES AS SHOWN ARE BASED ON THE BEST INFORMATION AVAILABLE. BUT NO GUARANTEE IS GIVEN THAT ALL EXISTING UTILITIES ARE SHOWN OR THAT THE GIVEN LOCATIONS ARE EXACT. CONFIRMATION OF EXISTENCE AND EXACT LOCATION OF ALL SERVICES MUST BE OBTAINED FROM THE INDIVIDUAL UTILITIES BEFORE PROCEEDING WITH CONSTRUCTION.

B.M.	39-080	S.E. Cor. Ness Ave. & Strathmillan Rd., Tbit on top of 0.05m dia. x 2.4m iron pipe.
ELEV.	236.230	3.4m N. of S.L. of Ness Ave. & 2.1m W. of E.L. of Strathmillan Rd.
NO.	REVISIONS	DATE BY

**UMA Engineering Ltd.**  
 Consulting • Engineering • Construction • Management Services

DESIGNED BY: FMI  
 CHECKED BY: [Signature]  
 DRAWN BY: ADL  
 APPROVED BY: [Signature]  
 HOR. SCALE: 1:250  
 VERTICAL: 1:50  
 DATE: 04/04/08

**ENGINEER'S SEAL**  
 PROVINCE OF MANITOBA  
 C.C. MACEY  
 REGISTERED ENGINEER  
 CONSULTANT DRAWING NO. 06  
 D265-096-03

**THE CITY OF WINNIPEG**  
 WATER AND WASTE DEPARTMENT

STRATHMILLAN/MOORGATE  
 COMBINED SEWER RELIEF  
 CONTRACT 5  
 NESS AVENUE  
 STRATHMILLAN RD.  
 to PUBLIC LANE N of DAVIDSON ST.

SHEET 06 OF 20  
 CITY DRAWING NUMBER LD-2931  
 REV

PLOT SCALE: 1:0.25  
 UMA FILE NAME: NES01PR\_R-DWG 2004-04-07 11:36am ADL