

D SIZE 22" x 34" (558mm x 863mm)

EXISTING FEATURES

237.0
236.0
235.0
234.0
233.0
232.0
231.0
230.0
229.0

CHAINAGE
ALONG S.P.
1+35 MATCH LINE

1+50

121.8 of 300 LDS at 1.22% C76 V or SDR 35 PVC (MH to MH)

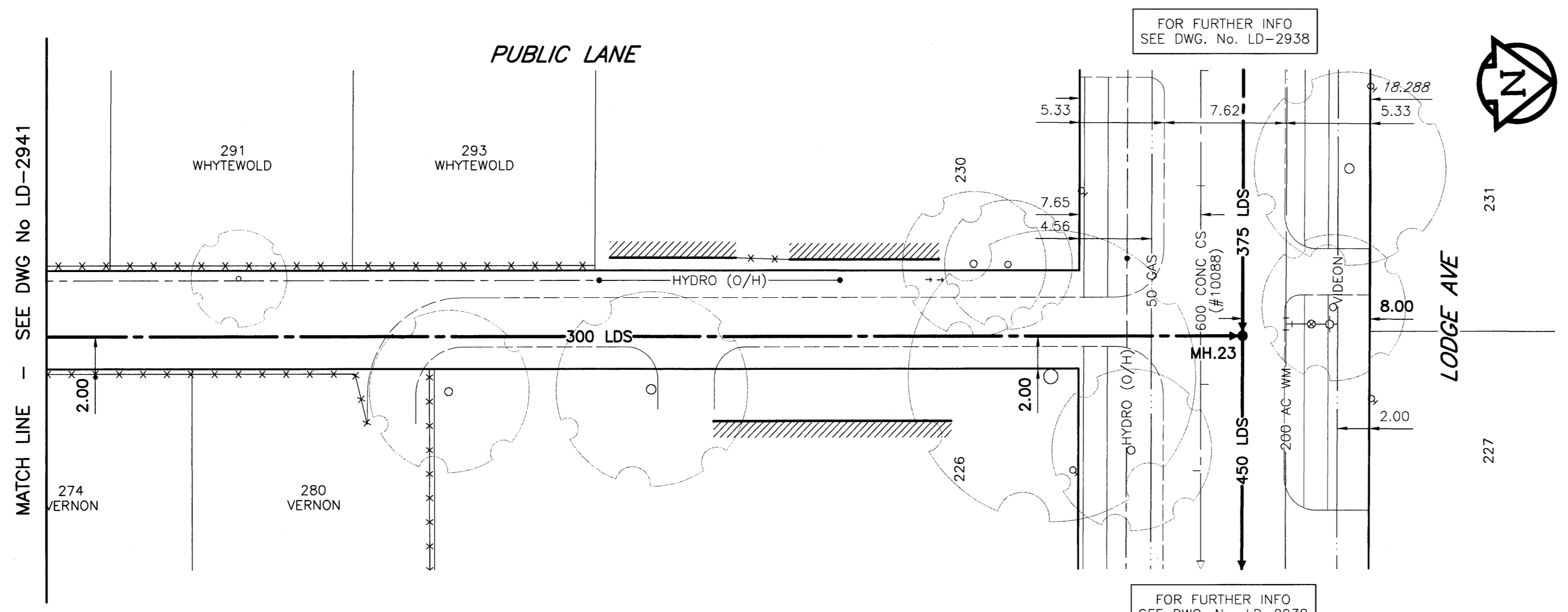
2+00.000 SE PL LODGE
2+00.023 SW PL LODGE

RIM EL 35.95
300 S INV 30.605
375 W INV 30.530
450 E INV 30.455

2+10.31 MH23

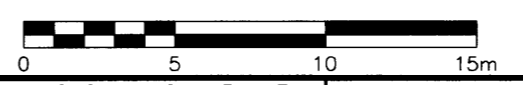
2+18.298 N PL LODGE

237.0
236.0
235.0
234.0
233.0
232.0
231.0
230.0
229.0



FOR FURTHER INFO
SEE DWG. No. LD-2938

FOR FURTHER INFO
SEE DWG. No. LD-2938



METRIC
WHOLE NUMBERS INDICATE MILLIMETRES
DECIMALIZED NUMBERS INDICATE METRES

WARNING

IF POWER EQUIPMENT OR EXPLOSIVES ARE TO BE USED FOR EXCAVATION ON THIS PROJECT, THE CONTRACTOR MUST:
1) NOTIFY THE GAS COMPANY OF THE PROPOSED LOCATION OF EXCAVATION.
2) TAKE PRECAUTION TO AVOID DAMAGE TO GAS COMPANY INSTALLATIONS.
SEE PROVINCIAL REGULATION 140/92 FOR DETAILS

CONSTRUCTION NOTES:

1. For detailed test hole information, see specifications.
2. The location of all services is to be confirmed in the field.
3. Install new sewers and catchbasin leads by trenchless methods wherever possible.
4. Renew/Rehabilitate catchbasins & renew catchbasin leads where noted.

Bid Opportunity No. 140-2004

150 mm WM	WATERMAIN	150 mm WM	HYDRO	150 mm WM	WATERMAIN
Hydrant	HYDRANT	Valve	MTS	Hydrant	HYDRANT
300 mm LDS	LAND DRAINAGE SEWER	300 mm LDS	CONCRETE	300 mm LDS	LAND DRAINAGE SEWER
250 mm WWS	WASTE WATER SEWER	250 mm WWS	ASPHALT	250 mm WWS	WASTE WATER SEWER
Manhole	MANHOLE	Curb Stop	CURB STOP	Curb Stop	CURB STOP
Catch Basin	CATCH BASIN	Reducer	REDUCER	Reducer	REDUCER
Curb Inlet	CURB INLET	Coupling	COUPLING	Coupling	COUPLING
Culvert	CULVERT	Anode	ANODE	Anode	ANODE
Survey Bar	SURVEY BAR	WM Monitoring Station	WM MONITORING STATION	WM Monitoring Station	WM MONITORING STATION
Pipe Abandonments	PIPE ABANDONMENTS				
Existing	LEGEND - PLAN	Proposed	LEGEND - PLAN	Proposed	LEGEND - PROFILE

LOCATION APPROVED UNDERGROUND STRUCTURES

SUPR. U/G STRUCTURES COMMITTEE DATE

NOTE:
LOCATION OF UNDERGROUND STRUCTURES AS SHOWN ARE BASED ON THE BEST INFORMATION AVAILABLE. BUT NO GUARANTEE IS GIVEN THAT ALL EXISTING UTILITIES ARE SHOWN OR THAT THE GIVEN LOCATIONS ARE EXACT. CONFIRMATION OF EXISTENCE AND EXACT LOCATION OF ALL SERVICES MUST BE OBTAINED FROM THE INDIVIDUAL UTILITIES BEFORE PROCEEDING WITH CONSTRUCTION.

B.M. 39-016	ELEV. 237.524m	S side Lodge Ave. @ Golden Gate Bay, Tbt in N. Conc Foundation of No. 350 Lodge Ave. (Silver Heights Collegiate), 7.6m W. & 0.3m A.G.L. of N.E. Cor. of Collegiate (most Ely. entrance to Collegiate).
NO.	REVISIONS	DATE BY

UMA Engineering Ltd.
• Consulting • Engineering • Construction • Management Services

DESIGNED BY	FMI	CHECKED BY	CCW
DRAWN BY	ADL	APPROVED FOR CONSTRUCTION	[Signature]
HOR. SCALE:	1:250	RELEASED FOR CONSTRUCTION	[Signature]
VERTICAL:	1:50	DATE	04/02/08

APCGM
Certificate of Authorization
UMA Engineering Ltd.
No. 256 Expiry: April 30, 2004

ENGINEER'S SEAL
PROVINCE OF MANITOBA
08 April 08
C.C. MACEY
REGISTERED ENGINEER

THE CITY OF WINNIPEG
Winnipeg WATER AND WASTE DEPARTMENT

STRATHMILLAN/MOORGATE COMBINED SEWER RELIEF CONTRACT 5

PUBLIC LANE W of VERNON ROAD.
65m S of LODGE AVE.
to LODGE AVE.

SHEET 17 OF 20
CITY DRAWING NUMBER LD-2942
REV

PLOT SCALE: 1:0.25
UMA FILE NAME: LAND1PR_R-DWG 2004-04-07 2:51pm ADL