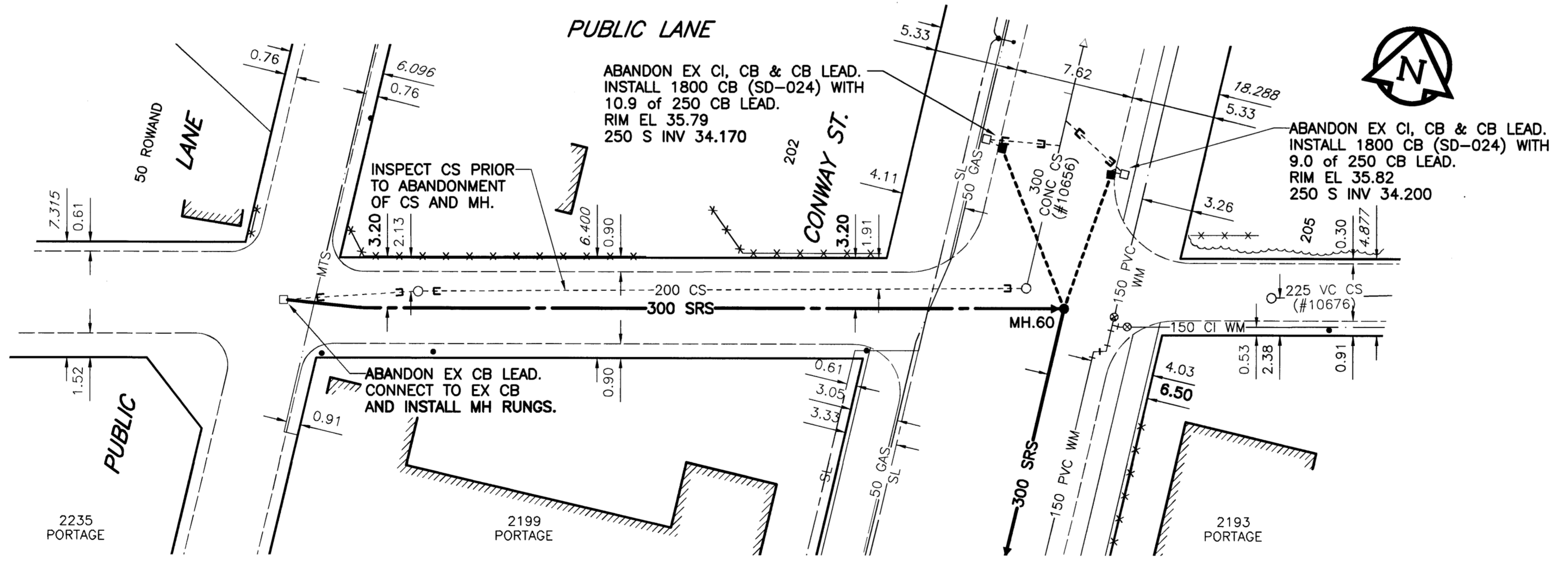
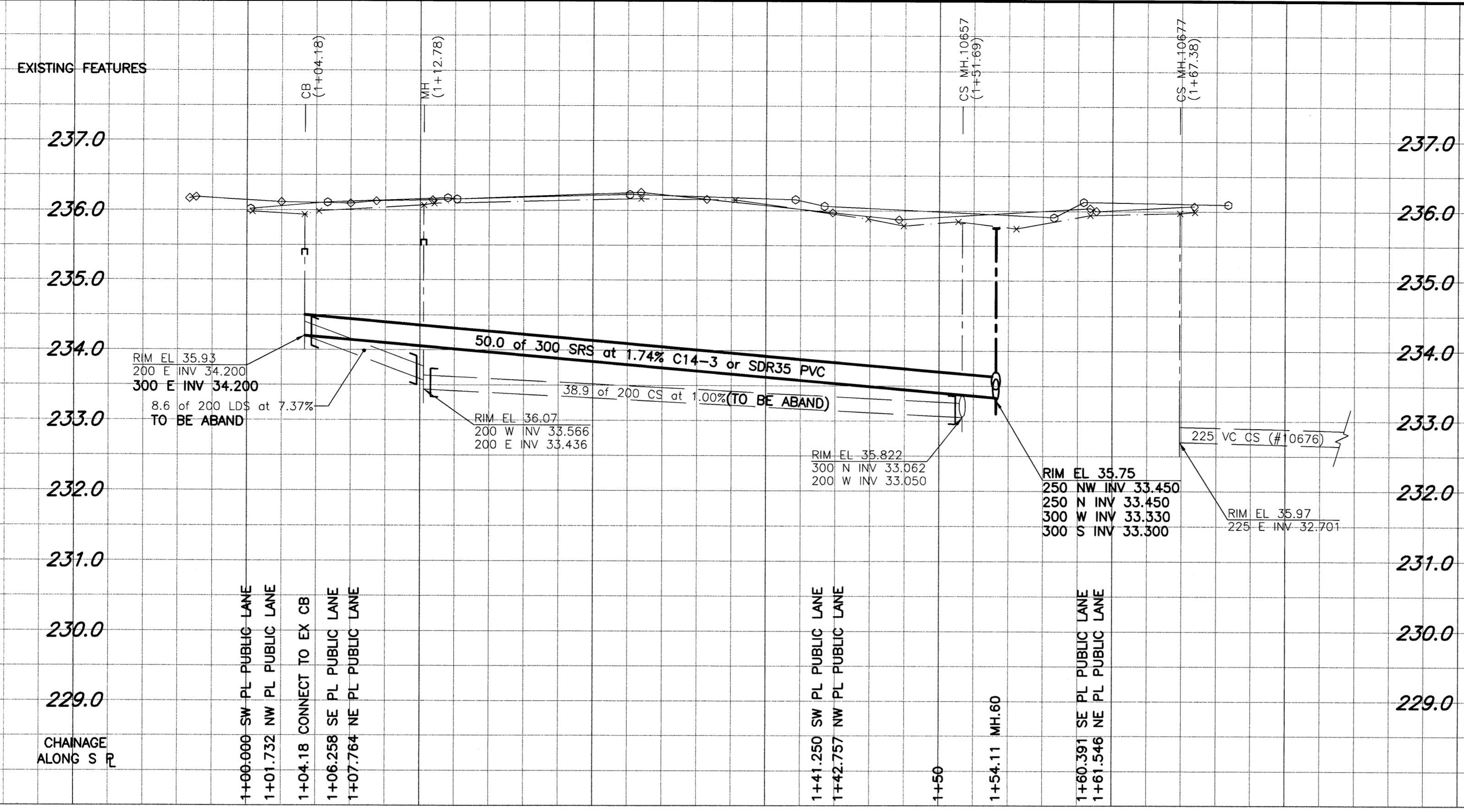


D SIZE 22" x 34" (558mm x 863mm)

PLOT SCALE: 1:0.25
UMA FILE NAME: LANO1PR_R-DWG 2004-04-19 4:36pm ADL



FOR FURTHER INFO
SEE DWG. No. LD-2855

WARNING

IF POWER EQUIPMENT OR EXPLOSIVES ARE TO BE USED FOR EXCAVATION ON THIS PROJECT, THE CONTRACTOR MUST:
1) NOTIFY THE GAS COMPANY OF THE PROPOSED LOCATION OF EXCAVATION.
2) TAKE PRECAUTION TO AVOID DAMAGE TO GAS COMPANY INSTALLATIONS.
SEE PROVINCIAL REGULATION 140/92 FOR DETAILS

150 mm WM	WATERMAIN	150 mm WM	HYDRO	150 mm WM	WATERMAIN
	HYDRANT		MTS		HYDRANT
	VALVE		GAS		VALVE
	LAND DRAINAGE SEWER		CONCRETE		LAND DRAINAGE SEWER
	WASTE WATER SEWER		ASPHALT		WASTE WATER SEWER
	MANHOLE		CURB STOP		CURB STOP
	CATCH BASIN		REDUCER		NORTH/WEST PROFILE
	CURB INLET		COUPLING		SOUTH/EAST PROFILE
	CULVERT		ANODE		LAMP STANDARD
	SURVEY BAR		WM MONITORING STATION		TREE
	PIPE ABANDONMENTS				
EXISTING	LEGEND - PLAN	PROPOSED	EXISTING	LEGEND - PROFILE	PROPOSED

LOCATION APPROVED UNDERGROUND STRUCTURES

SUPR. U/G STRUCTURES COMMITTEE DATE

NOTE:
LOCATION OF UNDERGROUND STRUCTURES AS SHOWN ARE BASED ON THE BEST INFORMATION AVAILABLE, BUT NO GUARANTEE IS GIVEN THAT ALL EXISTING UTILITIES ARE SHOWN OR THAT THE GIVEN LOCATIONS ARE EXACT. CONFIRMATION OF EXISTENCE AND EXACT LOCATION OF ALL SERVICES MUST BE OBTAINED FROM THE INDIVIDUAL UTILITIES BEFORE PROCEEDING WITH CONSTRUCTION.

NO.	REVISIONS	DATE	BY

UMA Engineering Ltd.
• Consulting • Engineering • Construction • Management Services

DESIGNED BY: FMI
CHECKED BY: *CCW*

DRAWN BY: ADL
APPROVED BY: *Suzanne Blinn*

HOR. SCALE: 1:250
VERTICAL: 1:50
DATE: 04/04/20

APEGM
Certificate of Authorization
UMA Engineering Ltd.
No. 256 Expiry: April 30, 2004

ENGINEER'S SEAL
PROVINCE OF MANITOBA
20 APR 04
C.C. MACEY
REGISTERED ENGINEER

THE CITY OF WINNIPEG
Winnipeg WATER AND WASTE DEPARTMENT

STRATHMILLAN/MOORGATE
COMBINED SEWER RELIEF
CONTRACT 6

PUBLIC LANE N of PORTAGE AVE.
PUBLIC LANE 35m W of CONWAY ST.
to CONWAY ST.

SHEET 15 OF 15
CITY DRAWING NUMBER
REV
LD-2856

- CONSTRUCTION NOTES:**
- For detailed test hole information, see specifications.
 - The location of all services is to be confirmed in the field.
 - Install new sewers and catchbasin leads by trenchless methods wherever possible.
 - Renew/Rehabilitate catchbasins & renew catchbasin leads where noted.

Bid Opportunity No. 141-2004