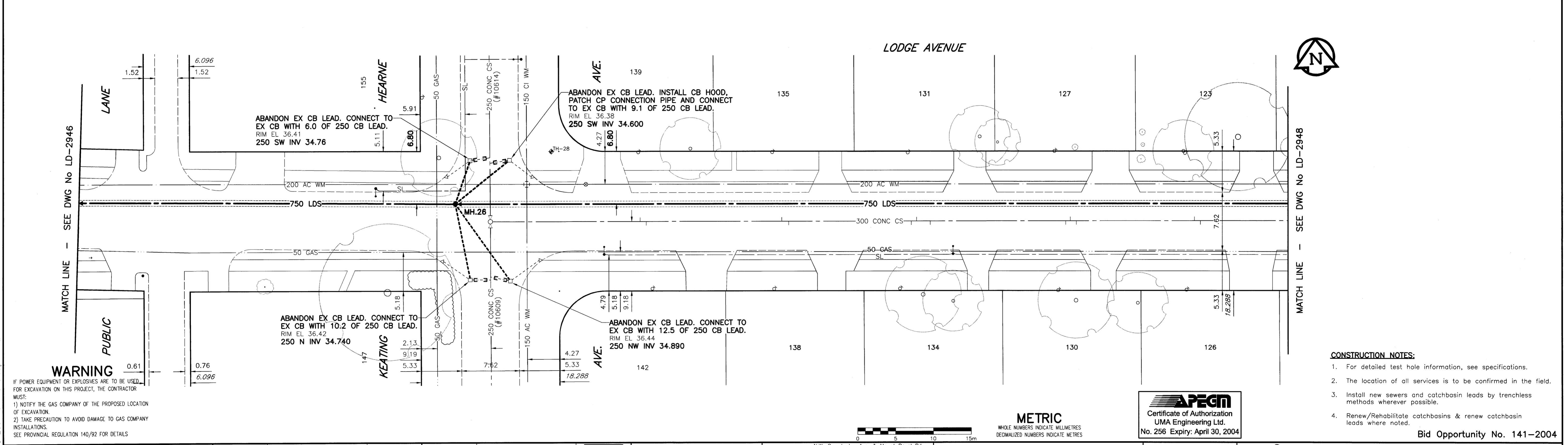
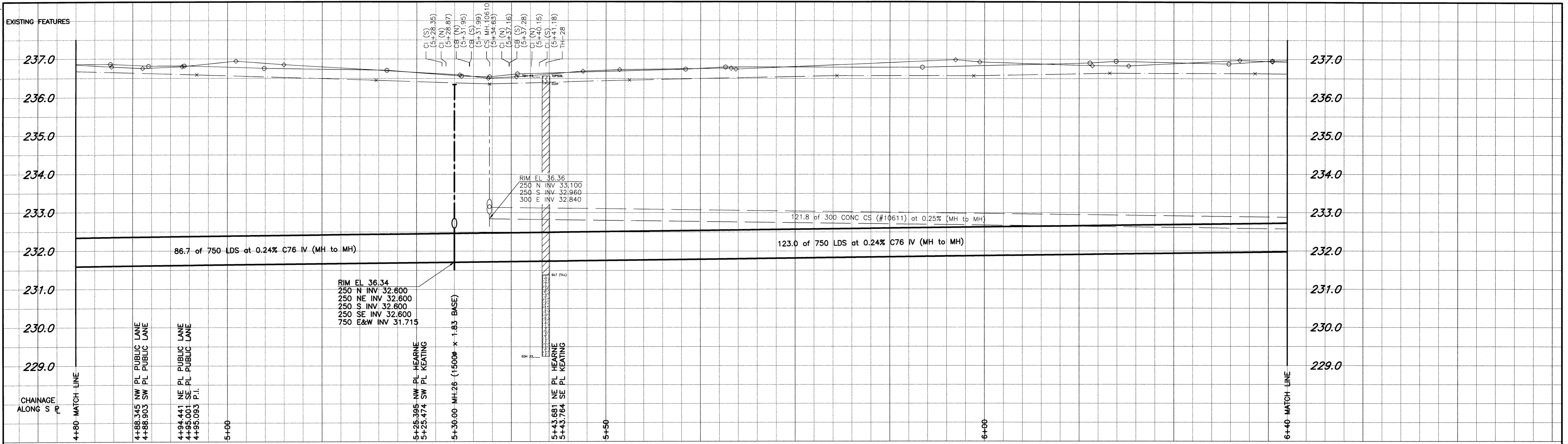


D SIZE 22" x 34" (558mm x 863mm)  
 PLOT SCALE: 1:0.25  
 UMA FILE NAME: LOD02PR.R-DWG 2004-04-19 3:09pm ADL



**WARNING**

IF POWER EQUIPMENT OR EXPLOSIVES ARE TO BE USED FOR EXCAVATION ON THIS PROJECT, THE CONTRACTOR MUST:

- 1) NOTIFY THE GAS COMPANY OF THE PROPOSED LOCATION OF EXCAVATION.
- 2) TAKE PRECAUTION TO AVOID DAMAGE TO GAS COMPANY INSTALLATIONS.

SEE PROVINCIAL REGULATION 140/92 FOR DETAILS

150 mm WM	WATERMAIN	150 mm WM	HYDRO	150 mm WM	WATERMAIN
○	HYDRANT	○	MTS	○	HYDRANT
○	VALVE	○	GAS	○	VALVE
○	LAND DRAINAGE SEWER	○	CONCRETE	○	LAND DRAINAGE SEWER
○	WASTE WATER SEWER	○	ASPHALT	○	WASTE WATER SEWER
○	MANHOLE	○	CURB STOP	○	PROFILE
○	CATCH BASIN	○	REDUCER	○	NORTH/WEST P
○	CURB INLET	○	COUPLING	○	SOUTH/EAST P
○	CULVERT	○	ANODE	○	LAMP STANDARD
○	SURVEY BAR	○	WM MONITORING STATION	○	TREE
○	PIPE ABANDONMENTS	○		○	
○	EXISTING	○	LEGEND - PLAN	○	EXISTING
○	LEGEND - PLAN	○	PROPOSED	○	LEGEND - PROFILE
○		○		○	PROPOSED

**LOCATION APPROVED UNDERGROUND STRUCTURES**

SUPR. U/G STRUCTURES COMMITTEE DATE

**NOTE:**  
 LOCATION OF UNDERGROUND STRUCTURES AS SHOWN ARE BASED ON THE BEST INFORMATION AVAILABLE, BUT NO GUARANTEE IS GIVEN THAT ALL EXISTING UTILITIES ARE SHOWN OR THAT THE GIVEN LOCATIONS ARE EXACT. CONFIRMATION OF EXISTENCE AND EXACT LOCATION OF ALL SERVICES MUST BE OBTAINED FROM THE INDIVIDUAL UTILITIES BEFORE PROCEEDING WITH CONSTRUCTION.

NO.	REVISIONS	DATE	BY

**UMA Engineering Ltd.**  
 • Consulting • Engineering • Construction • Management Services

DESIGNED BY: FMI  
 DRAWN BY: ADL  
 HOR. SCALE: 1:250  
 VERTICAL: 1:50  
 DATE: 04/04/20

CHECKED BY: [Signature]  
 APPROVED BY: [Signature]  
 RELEASED FOR CONSTRUCTION: [Signature]  
 DATE: 04/04/20

**APECM**  
 Certificate of Authorization  
 UMA Engineering Ltd.  
 No. 256 Expiry: April 30, 2004

ENGINEER'S SEAL  
 PROVINCE OF MANITOBA  
 20 APR 04  
 C.C. MACEY  
 REGISTERED ENGINEER

CONSULTANT DRAWING NO. 02  
 D265-096-03

**THE CITY OF WINNIPEG**  
 WATER AND WASTE DEPARTMENT

**STRATHMILLAN/MOORGATE COMBINED SEWER RELIEF CONTRACT 6**

LODGE AVENUE  
 45m W of KEATING AVE.  
 to 112m W of MOUNT ROYAL RD.

SHEET 02 OF 15  
 CITY DRAWING NUMBER LD-2947  
 REV

Bid Opportunity No. 141-2004

- CONSTRUCTION NOTES:**
1. For detailed test hole information, see specifications.
  2. The location of all services is to be confirmed in the field.
  3. Install new sewers and catchbasin leads by trenchless methods wherever possible.
  4. Renew/Rehabilitate catchbasins & renew catchbasin leads where noted.