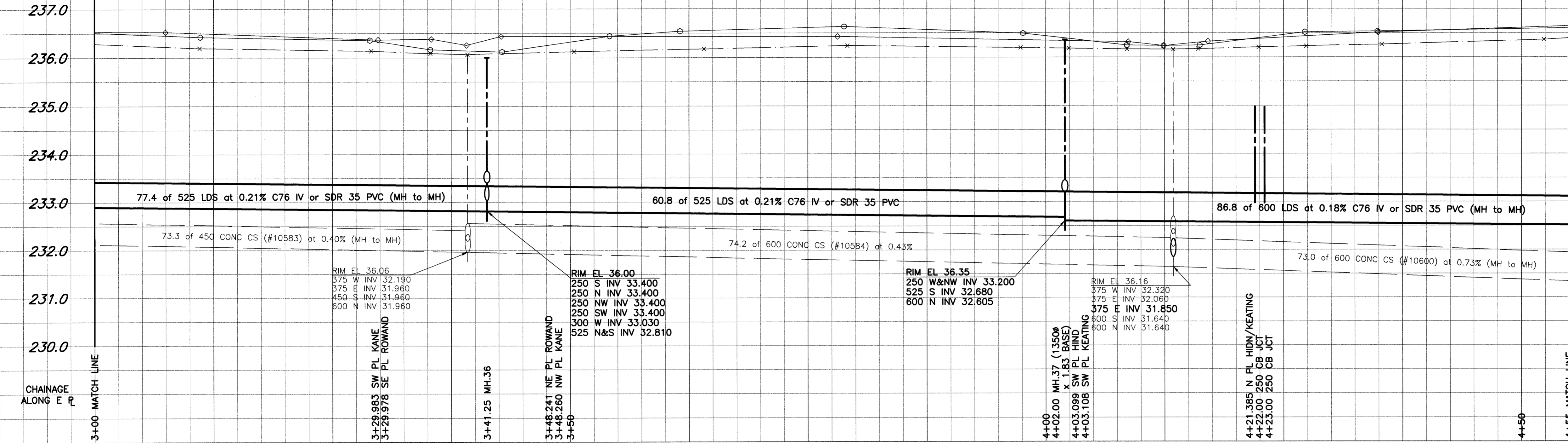


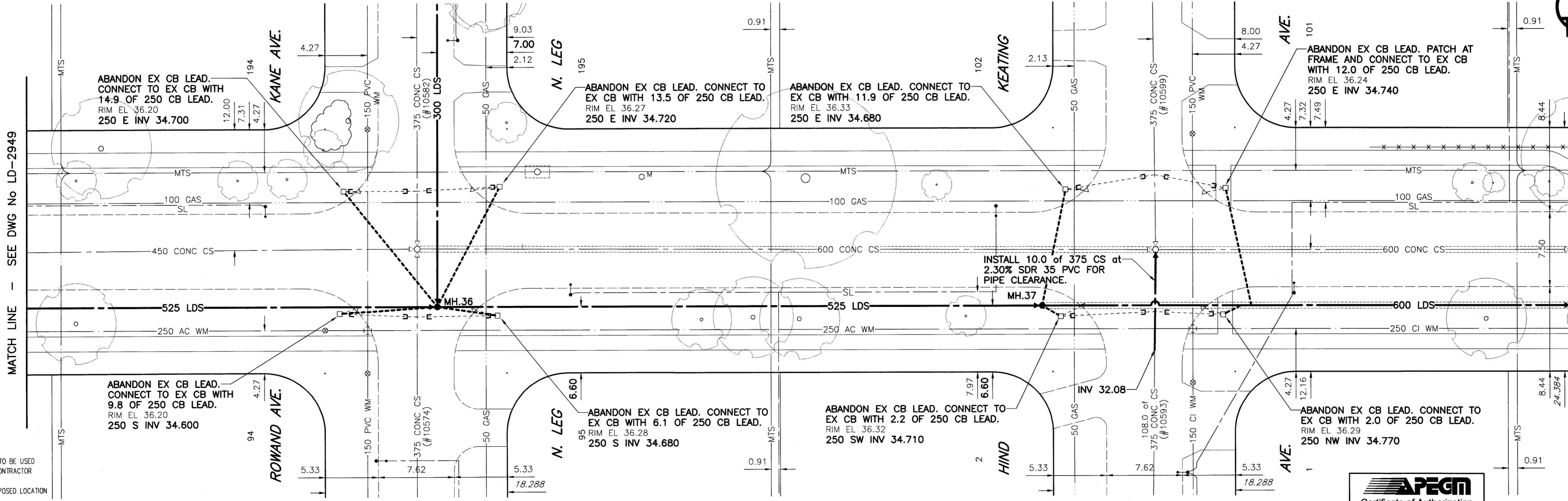
D SIZE 22" x 34" (558mm x 863mm)

EXISTING FEATURES



FOR FURTHER INFO SEE DWG. No. LD-2958

**MOUNT ROYAL ROAD**

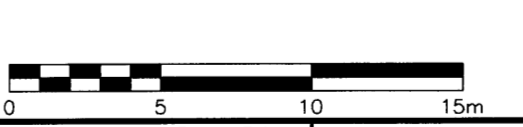
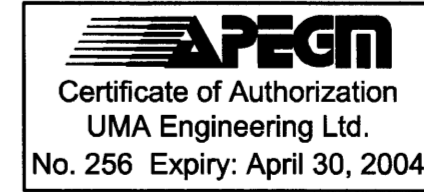


**WARNING**

IF POWER EQUIPMENT OR EXPLOSIVES ARE TO BE USED FOR EXCAVATION ON THIS PROJECT, THE CONTRACTOR MUST:  
 1) NOTIFY THE GAS COMPANY OF THE PROPOSED LOCATION OF EXCAVATION.  
 2) TAKE PRECAUTION TO AVOID DAMAGE TO GAS COMPANY INSTALLATIONS.  
 SEE PROVINCIAL REGULATION 140/92 FOR DETAILS

**CONSTRUCTION NOTES:**

- For detailed test hole information, see specifications.
- The location of all services is to be confirmed in the field.
- Install new sewers and catchbasin leads by trenchless methods wherever possible.
- Renew/Rehabilitate catchbasins & renew catchbasin leads where noted.



**METRIC**  
 WHOLE NUMBERS INDICATE MILLIMETRES  
 DECIMALIZED NUMBERS INDICATE METRES

150 mm WM	WATERMAIN	150 mm WM	HYDRO	150 mm WM	WATERMAIN
Hydrant	HYDRANT	Hydrant	MTS	Hydrant	HYDRANT
Valve	VALVE	Valve	Gas	Valve	VALVE
300 mm LDS	LAND DRAINAGE SEWER	300 mm LDS	Concrete	300 mm LDS	LAND DRAINAGE SEWER
250 mm WWS	WASTE WATER SEWER	250 mm WWS	Asphalt	250 mm WWS	WASTE WATER SEWER
Manhole	MANHOLE	Manhole	Curb Stop	Manhole	MANHOLE
Catch Basin	CATCH BASIN	Catch Basin	Reducer	Catch Basin	CATCH BASIN
Curb Inlet	CURB INLET	Curb Inlet	Coupling	Curb Inlet	CURB INLET
Culvert	CULVERT	Culvert	Anode	Culvert	CULVERT
Survey Bar	SURVEY BAR	Survey Bar	WM Monitoring Station	Survey Bar	SURVEY BAR
Pipe Abandonments	PIPE ABANDONMENTS	Pipe Abandonments		Pipe Abandonments	PIPE ABANDONMENTS
Existing	LEGEND - PLAN	Proposed	Existing	Proposed	LEGEND - PROFILE

**LOCATION APPROVED UNDERGROUND STRUCTURES**

SUPR. U/G STRUCTURES COMMITTEE DATE

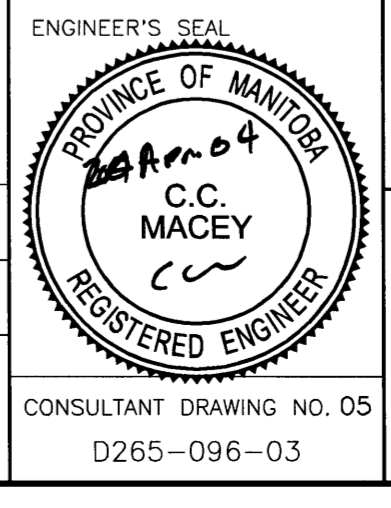
**NOTE:**  
 LOCATION OF UNDERGROUND STRUCTURES AS SHOWN ARE BASED ON THE BEST INFORMATION AVAILABLE, BUT NO GUARANTEE IS GIVEN THAT ALL EXISTING UTILITIES ARE SHOWN OR THAT THE GIVEN LOCATIONS ARE EXACT. CONFIRMATION OF EXISTENCE AND EXACT LOCATION OF ALL SERVICES MUST BE OBTAINED FROM THE INDIVIDUAL UTILITIES BEFORE PROCEEDING WITH CONSTRUCTION.

B.M. 39-062	N.W. Cor. Lodge Ave. & Mount Royal Rd. Tpt. on top of 0.05m dia. x 2.4m iron pipe, 1.2m S. of N.L. of Lodge Ave. & 7.7m E. of W.L. of Mount Royal Rd.
ELEV. 236.559m	
NO.	REVISIONS
DATE	BY

**UMA Engineering Ltd.**  
 Consulting • Engineering • Construction • Management Services

DESIGNED BY: FMI  
 DRAWN BY: ADL  
 HOR. SCALE: 1:250  
 VERTICAL: 1:50  
 DATE: 04/04/20

CHECKED BY: CCW  
 APPROVED BY: [Signature]  
 RELEASED FOR CONSTRUCTION: [Signature]  
 DATE: 04/04/20



**THE CITY OF WINNIPEG**  
 WATER AND WASTE DEPARTMENT

**STRATHMILLAN/MOORGATE COMBINED SEWER RELIEF CONTRACT 6**

MOUNT ROYAL ROAD  
 25m N of ROWAND AVE. (S. LEG)  
 to 22m S of LODGE AVE.

SHEET 05 OF 15  
 CITY DRAWING NUMBER LD-2950  
 REV

Bid Opportunity No. 141-2004

PLOT SCALE: 1:10.25  
 UMA FILE NAME: MQU01PR\_R-DWG\_2004-04-19\_3.17pm\_ADL