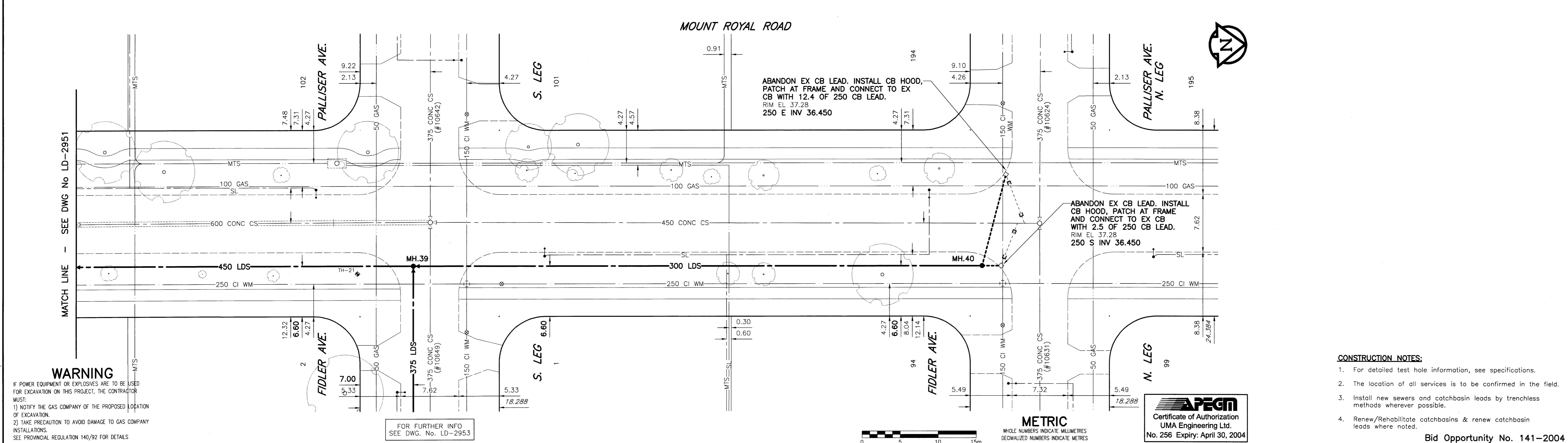
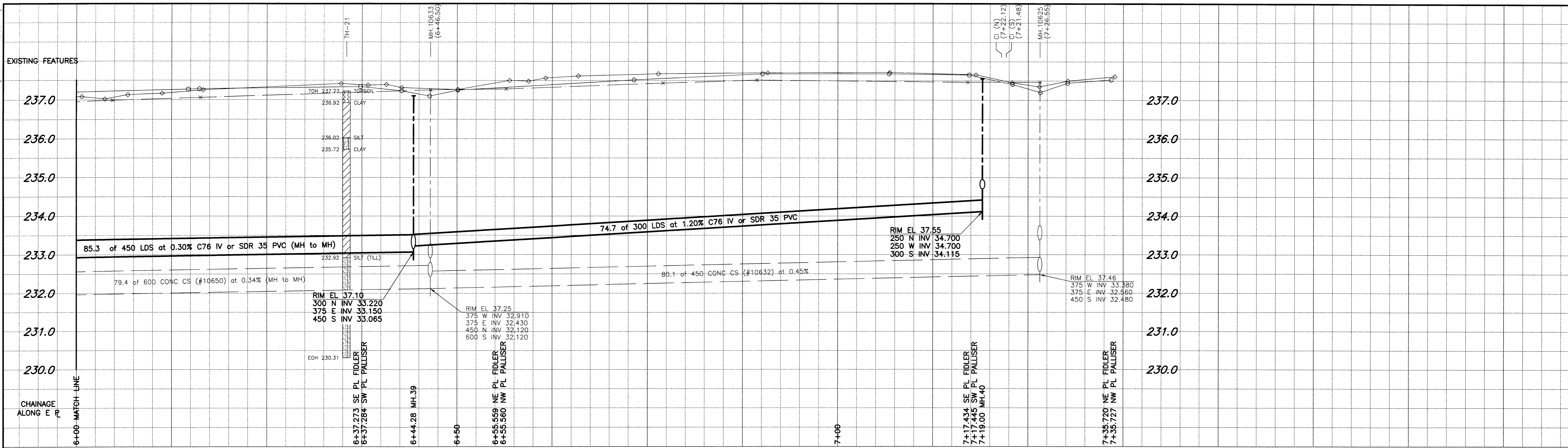


D SIZE 22" x 34" (558mm x 863mm)



WARNING
 IF POWER EQUIPMENT OR EXPLOSIVES ARE TO BE USED FOR EXCAVATION ON THIS PROJECT, THE CONTRACTOR MUST:
 1) NOTIFY THE GAS COMPANY OF THE PROPOSED LOCATION OF EXCAVATION.
 2) TAKE PRECAUTION TO AVOID DAMAGE TO GAS COMPANY INSTALLATIONS.
 SEE PROVINCIAL REGULATION 140/92 FOR DETAILS.

150 mm WM	WATERMAIN	150 mm WM	HYDRO	150 mm WM	WATERMAIN
⊕	HYDRANT	⊕	MTS	⊕	HYDRANT
⊙	VALVE	⊙	GAS	⊙	VALVE
⊗	LAND DRAINAGE SEWER	⊗	CONCRETE	⊗	LAND DRAINAGE SEWER
⊘	WASTE WATER SEWER	⊘	ASPHALT	⊘	WASTE WATER SEWER
○	MANHOLE	○	CURB STOP	○	PROFILE
□	CATCH BASIN	□	REDUCER	□	NORTH/WEST
△	CURB INLET	△	COUPLING	△	SOUTH/EAST
▽	CULVERT	▽	ANODE	▽	LAMP STANDARD
+	SURVEY BAR	+	WM MONITORING STATION	+	TREE
---	PIPE ABANDONMENTS	---		---	
---	EXISTING	---	LEGEND - PLAN	---	EXISTING
---	LEGEND - PLAN	---	PROPOSED	---	LEGEND - PROFILE
---		---		---	PROPOSED

LOCATION	APPROVED
UNDERGROUND	STRUCTURES
SUPR. U/G STRUCTURES	DATE
COMMITTEE	
NOTE:	
LOCATION OF UNDERGROUND STRUCTURES AS SHOWN ARE BASED ON THE BEST INFORMATION AVAILABLE. BUT NO GUARANTEE IS GIVEN THAT ALL EXISTING UTILITIES ARE SHOWN OR THAT THE GIVEN LOCATIONS ARE EXACT. CONFIRMATION OF EXISTENCE AND EXACT LOCATION OF ALL SERVICES MUST BE OBTAINED FROM THE INDIVIDUAL UTILITIES BEFORE PROCEEDING WITH CONSTRUCTION.	
NO. REVISIONS	DATE BY

B.M. 39-062 N.W. Cor. Lodge Ave. & Mount Royal Rd., Tbl. on top of 0.05m dia. x 2.4m iron pipe, 1.2m S. of N.L. of Lodge Ave. & 7.9m E. of W.L. of Mount Royal Rd.
 ELEV. 236.559m

UMA Engineering Ltd.
 Consulting • Engineering • Construction • Management Services

DESIGNED BY: FMI
 DRAWN BY: ADL
 HOR. SCALE: 1:250
 VERTICAL: 1:50
 DATE: 04/04/20

CHECKED BY: [Signature]
 APPROVED BY: [Signature]
 RELEASED FOR CONSTRUCTION: [Signature]
 DATE: 04/04/20

APECM
 Certificate of Authorization
 UMA Engineering Ltd.
 No. 256 Expiry: April 30, 2004

ENGINEER'S SEAL
 PROVINCE OF MANITOBA
 20 APR 04
 C.C. MACEY
 REGISTERED ENGINEER
 CONSULTANT DRAWING NO. 07
 D265-096-03

THE CITY OF WINNIPEG
 WATER AND WASTE DEPARTMENT

STRATHMILLAN/MOORGATE
 COMBINED SEWER RELIEF
 CONTRACT 6

MOUNT ROYAL ROAD
 24m N of HARMON AVE.
 to FIDLER AVE. (N. LEG)

SHEET 07 OF 15
 CITY DRAWING NUMBER LD-2952
 REV

- CONSTRUCTION NOTES:**
- For detailed test hole information, see specifications.
 - The location of all services is to be confirmed in the field.
 - Install new sewers and catchbasin leads by trenchless methods wherever possible.
 - Renew/Rehabilitate catchbasins & renew catchbasin leads where noted.

PLOT SCALE: 1:0.25
 UMA FILE NAME: M0U01PR_R-DWG 2004-04-19 3:17pm ADL

Bid Opportunity No. 141-2004