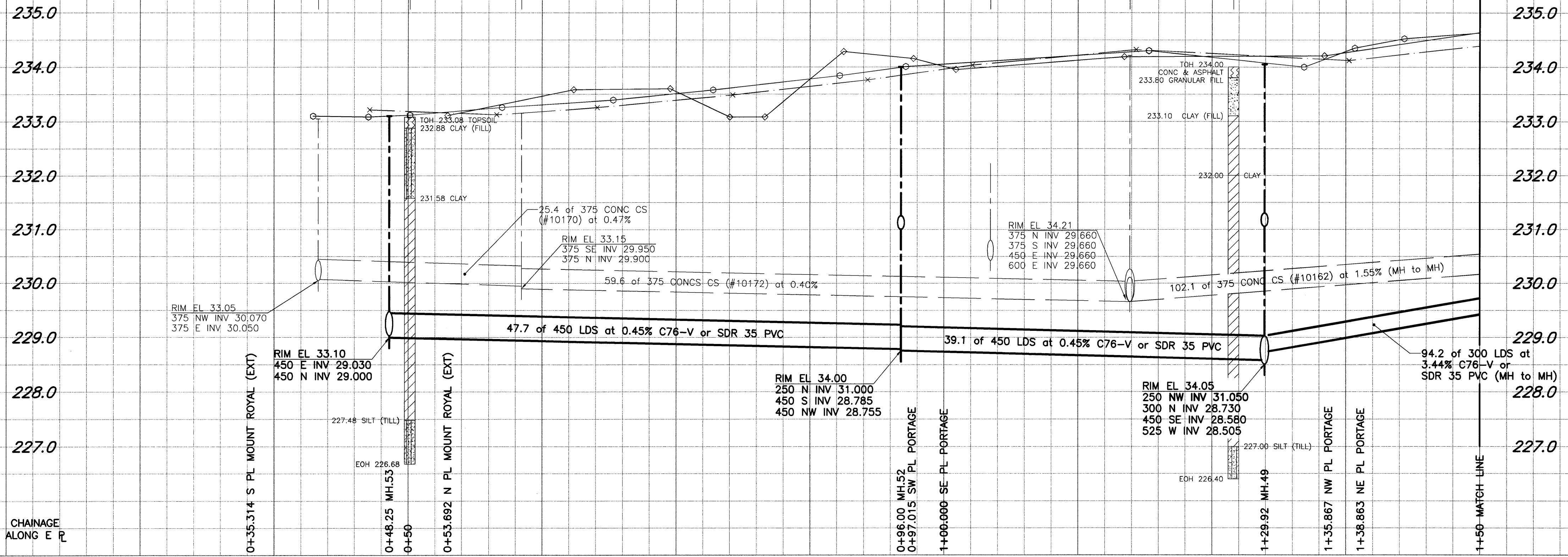
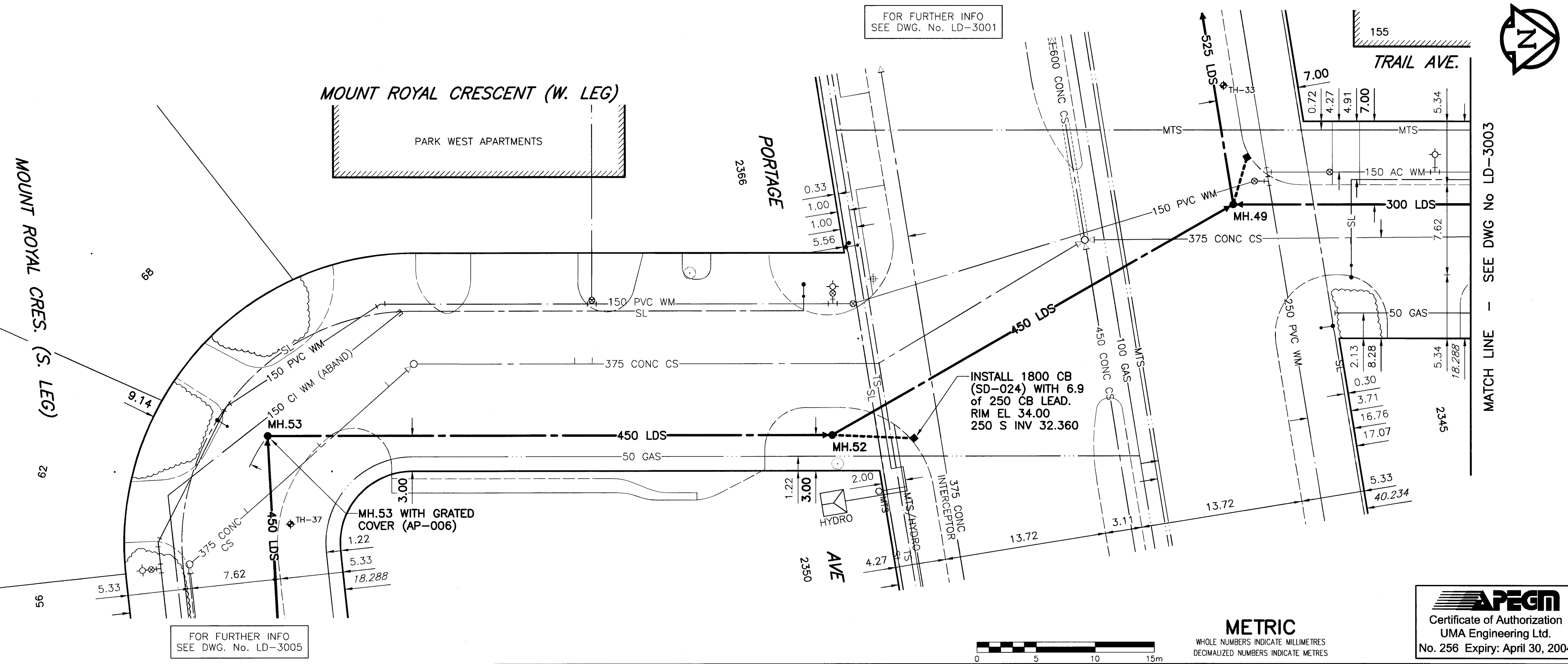


D. SIZE 22" x 34" (558mm x 863mm)

EXISTING FEATURES



CHAINAGE ALONG E.P.



FOR FURTHER INFO SEE DWG. No. LD-3001

FOR FURTHER INFO SEE DWG. No. LD-3005

**WARNING**

IF POWER EQUIPMENT OR EXPLOSIVES ARE TO BE USED FOR EXCAVATION ON THIS PROJECT, THE CONTRACTOR MUST:  
 1) NOTIFY THE GAS COMPANY OF THE PROPOSED LOCATION OF EXCAVATION.  
 2) TAKE PRECAUTION TO AVOID DAMAGE TO GAS COMPANY INSTALLATIONS.  
 SEE PROVINCIAL REGULATION 140/92 FOR DETAILS.

**CONSTRUCTION NOTES:**

- For detailed test hole information, see specifications.
- The location of all services is to be confirmed in the field.
- Install new sewers and catchbasin leads by trenchless methods wherever possible.
- Renew/Rehabilitate catchbasins & renew catchbasin leads where noted.

Bid Opportunity No. 142-2004

150 mm WM		300 mm LDS		250 mm WWS		HYDRO		WATERMAIN		300 mm LDS		250 mm WWS	
○	WATERMAIN	○	LAND DRAINAGE SEWER	○	WASTE WATER SEWER	○	HYDRO	○	WATERMAIN	○	LAND DRAINAGE SEWER	○	WASTE WATER SEWER
○	HYDRANT	○	VALVE	○	MANHOLE	○	MTS	○	HYDRANT	○	VALVE	○	MANHOLE
○	VALVE	○	CATCH BASIN	○	CURB INLET	○	GAS	○	VALVE	○	CATCH BASIN	○	CURB INLET
○	LAND DRAINAGE SEWER	○	WASTE WATER SEWER	○	CULVERT	○	CONCRETE	○	LAND DRAINAGE SEWER	○	WASTE WATER SEWER	○	CULVERT
○	WASTE WATER SEWER	○	SURVEY BAR	○	PIPE ABANDONMENTS	○	ASPHALT	○	WASTE WATER SEWER	○	SURVEY BAR	○	PIPE ABANDONMENTS
○	PIPE ABANDONMENTS	○	EXISTING	○	PROPOSED	○	EXISTING	○	PROPOSED	○	EXISTING	○	PROPOSED

LOCATION APPROVED UNDERGROUND STRUCTURES		DATE	
○	WATERMAIN	○	DATE
○	HYDRANT	○	DATE
○	VALVE	○	DATE
○	LAND DRAINAGE SEWER	○	DATE
○	WASTE WATER SEWER	○	DATE
○	C PROFILE	○	DATE
○	NORTH/WEST P	○	DATE
○	SOUTH/EAST P	○	DATE
○	LAMP STANDARD	○	DATE
○	TREE	○	DATE

NOTE: LOCATION OF UNDERGROUND STRUCTURES AS SHOWN ARE BASED ON THE BEST INFORMATION AVAILABLE, BUT NO GUARANTEE IS GIVEN THAT ALL EXISTING UTILITIES ARE SHOWN OR THAT THE GIVEN LOCATIONS ARE EXACT. CONFIRMATION OF EXISTENCE AND EXACT LOCATION OF ALL SERVICES MUST BE OBTAINED FROM THE INDIVIDUAL UTILITIES BEFORE PROCEEDING WITH CONSTRUCTION.

**UMA Engineering Ltd.**  
 Consulting • Engineering • Construction • Management Services

DESIGNED BY: FMI  
 CHECKED BY: CCR  
 DRAWN BY: ADL  
 APPROVED BY: [Signature]  
 HOR. SCALE: 1:250  
 VERTICAL: 1:50  
 DATE: 02/03/04

**APGM**  
 Certificate of Authorization  
 UMA Engineering Ltd.  
 No. 256 Expiry: April 30, 2004

PROFESSIONAL'S SEAL  
 PROVINCE OF MANITOBA  
 C.C. MACEY  
 REGISTERED ENGINEER  
 CONSULTANT DRAWING NO. 03  
 D265-096-04

**THE CITY OF WINNIPEG**  
 WATER AND WASTE DEPARTMENT

STRATHMILLAN/MOORGATE  
 COMBINED SEWER RELIEF  
 CONTRACT 7

MOUNT ROYAL CRESCENT (W. LEG)/TRAIL AVENUE  
 MOUNT ROYAL CRES. (S. LEG)  
 to 11m N of PORTAGE AVE.

SHEET 03 OF 09  
 CITY DRAWING NUMBER  
 REV  
**LD-3002**