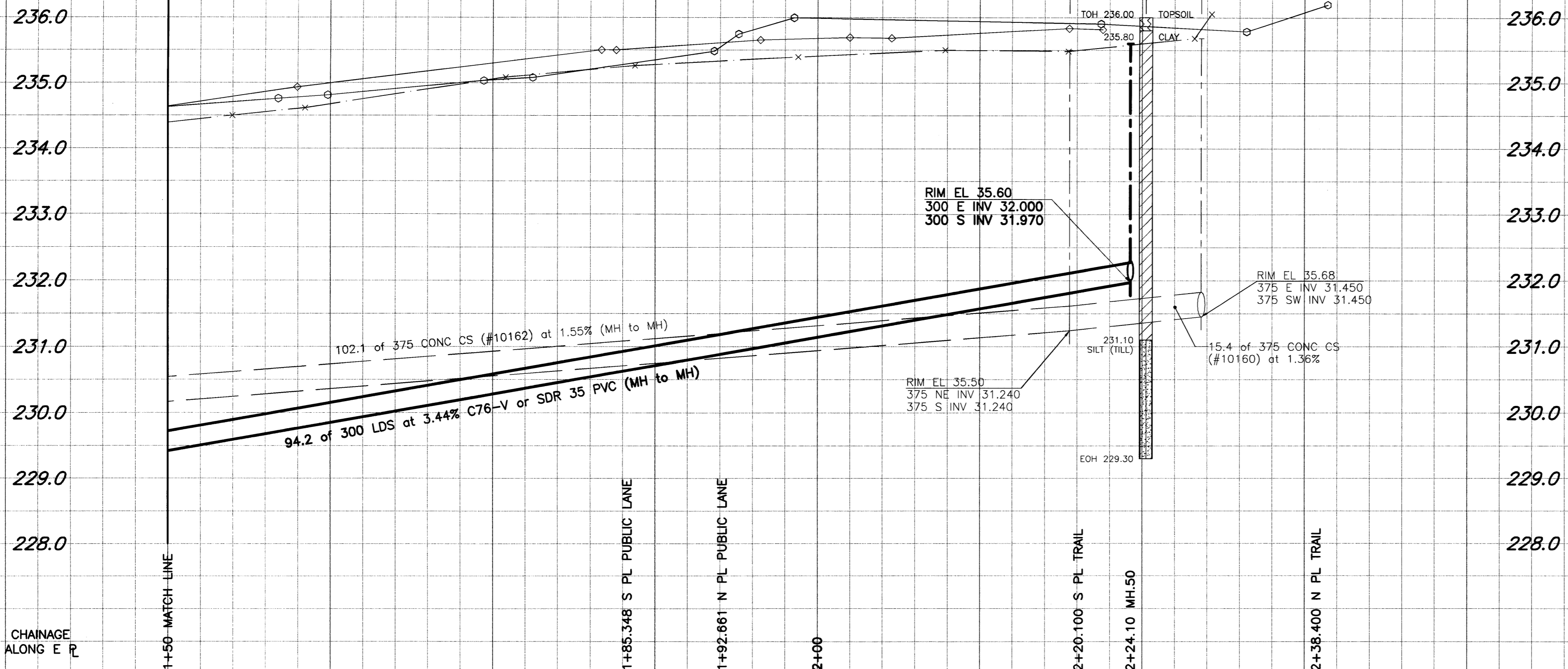
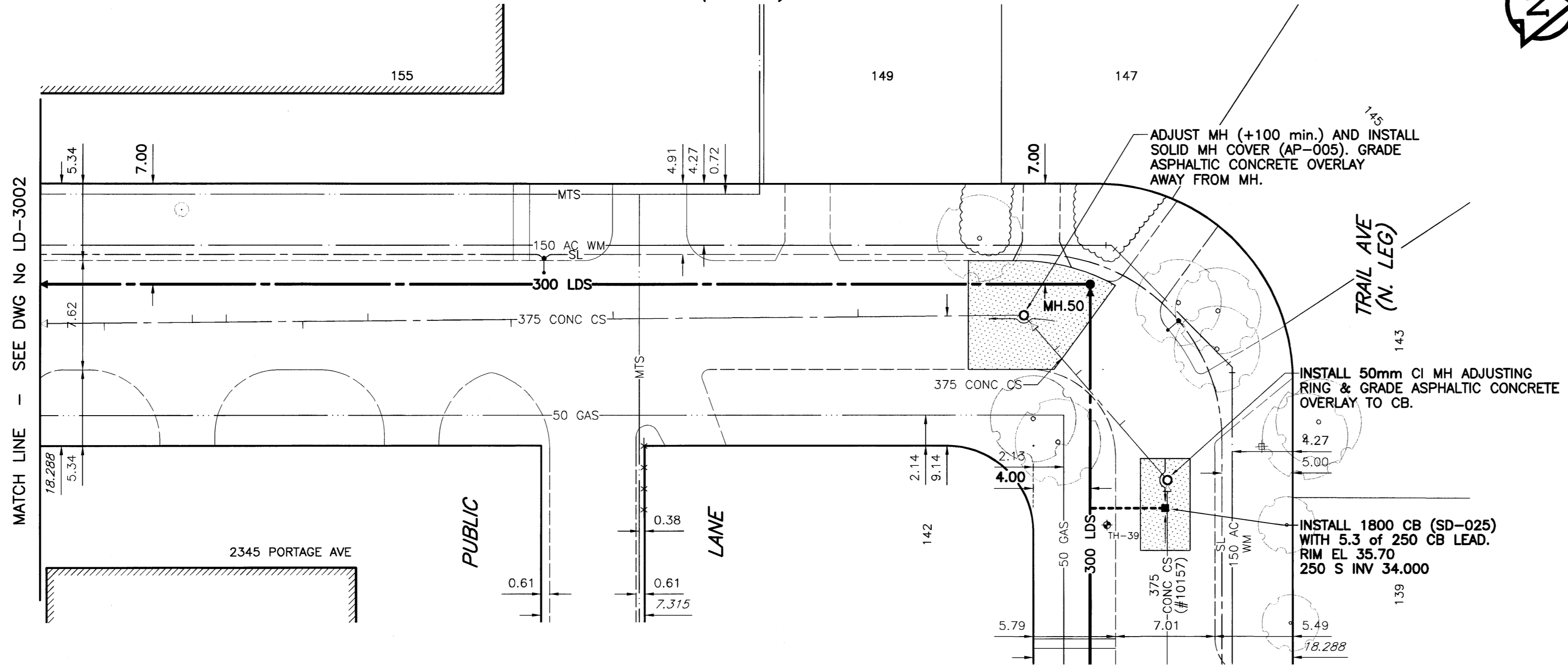


D. SIZE 22" x 34" (558mm x 863mm)

EXISTING FEATURES



TRAIL AVENUE (W. LEG)



**WARNING**

IF POWER EQUIPMENT OR EXPLOSIVES ARE TO BE USED FOR EXCAVATION ON THIS PROJECT, THE CONTRACTOR MUST:  
 1) NOTIFY THE GAS COMPANY OF THE PROPOSED LOCATION OF EXCAVATION.  
 2) TAKE PRECAUTION TO AVOID DAMAGE TO GAS COMPANY INSTALLATIONS.  
 SEE PROVINCIAL REGULATION 140/92 FOR DETAILS

**CONSTRUCTION NOTES:**

1. For detailed test hole information, see specifications.
2. The location of all services is to be confirmed in the field.
3. Install new sewers and catchbasin leads by trenchless methods wherever possible.
4. Renew/Rehabilitate catchbasins & renew catchbasin leads where noted.

Bid Opportunity No. 142-2004

PLOT SCALE: 1:10.25  
 FILE: M0U02PR\_R-DWG 2004-03-18 09:29am ADL

150 mm WM	WATERMAIN	150 mm WM	HYDRO	150 mm WM	WATERMAIN
⊕	HYDRANT	⊕	MTS	⊕	HYDRANT
⊙	VALVE	⊙	GAS	⊙	VALVE
300 mm LDS	LAND DRAINAGE SEWER	300 mm LDS	CONCRETE	300 mm LDS	LAND DRAINAGE SEWER
250 mm WWS	WASTE WATER SEWER	250 mm WWS	ASPHALT	250 mm WWS	WASTE WATER SEWER
○	MANHOLE	○	CURB STOP	○	C PROFILE
△	CATCH BASIN	△	REDUCER	△	NORTH/WEST R
□	CURB INLET	□	COUPLING	□	SOUTH/EAST R
⊕	SURVEY BAR	⊕	ANODE	⊕	LAMP STANDARD
E-----	PIPE ABANDONMENTS	E-----	WM MONITORING STATION	E-----	TREE
EXISTING	LEGEND - PLAN	PROPOSED	EXISTING	LEGEND - PROFILE	PROPOSED

**LOCATION APPROVED UNDERGROUND STRUCTURES**

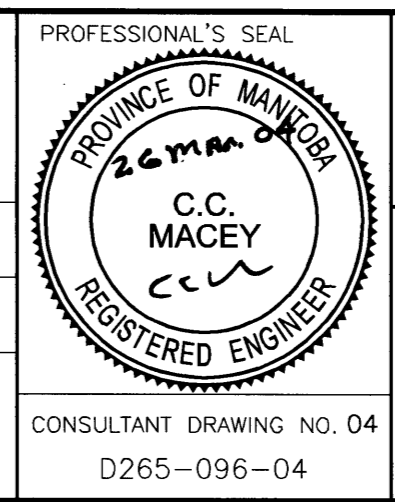
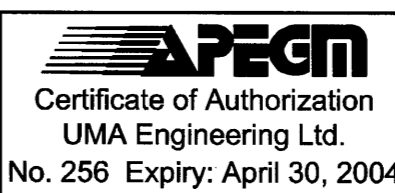
DATE: \_\_\_\_\_

NOTE: LOCATION OF UNDERGROUND STRUCTURES AS SHOWN ARE BASED ON THE BEST INFORMATION AVAILABLE, BUT NO GUARANTEE IS GIVEN THAT ALL EXISTING UTILITIES ARE SHOWN OR THAT THE GIVEN LOCATIONS ARE EXACT. CONFIRMATION OF EXISTENCE AND EXACT LOCATION OF ALL SERVICES MUST BE OBTAINED FROM THE INDIVIDUAL UTILITIES BEFORE PROCEEDING WITH CONSTRUCTION.

B.M. 39-057	N.E. Cor. Portage Ave. & Strathmillan Rd.,	ELEV. 233.241
	Tell. on top of 0.05m dia. x 2.4m iron pipe	
	on N. line of Portage Ave. & 2m W. of E.L.	
	Strathmillan Rd. along N. line of Portage Ave.	
NO. REVISIONS	DATE	BY

**UMA Engineering Ltd.**  
 • Consulting • Engineering • Construction • Management Services

DESIGNED BY: FMI  
 CHECKED BY: *CCW*  
 DRAWN BY: ADL  
 APPROVED BY: *Bryan Lillien*  
 HOR. SCALE: 1:250  
 VERTICAL: 1:50  
 RELEASED FOR CONSTRUCTION: *AdL*  
 DATE: *04/03/04*  
 DATE: *March 26/04*



**THE CITY OF WINNIPEG**  
 WATER AND WASTE DEPARTMENT

STRATHMILLAN/MOORGATE  
 COMBINED SEWER RELIEF  
 CONTRACT 7

TRAIL AVENUE (W. LEG)  
 11m N of PORTAGE AVE.  
 to TRAIL AVE. (N.LEG)

SHEET 04 OF 09  
 CITY DRAWING NUMBER LD-3003  
 REV