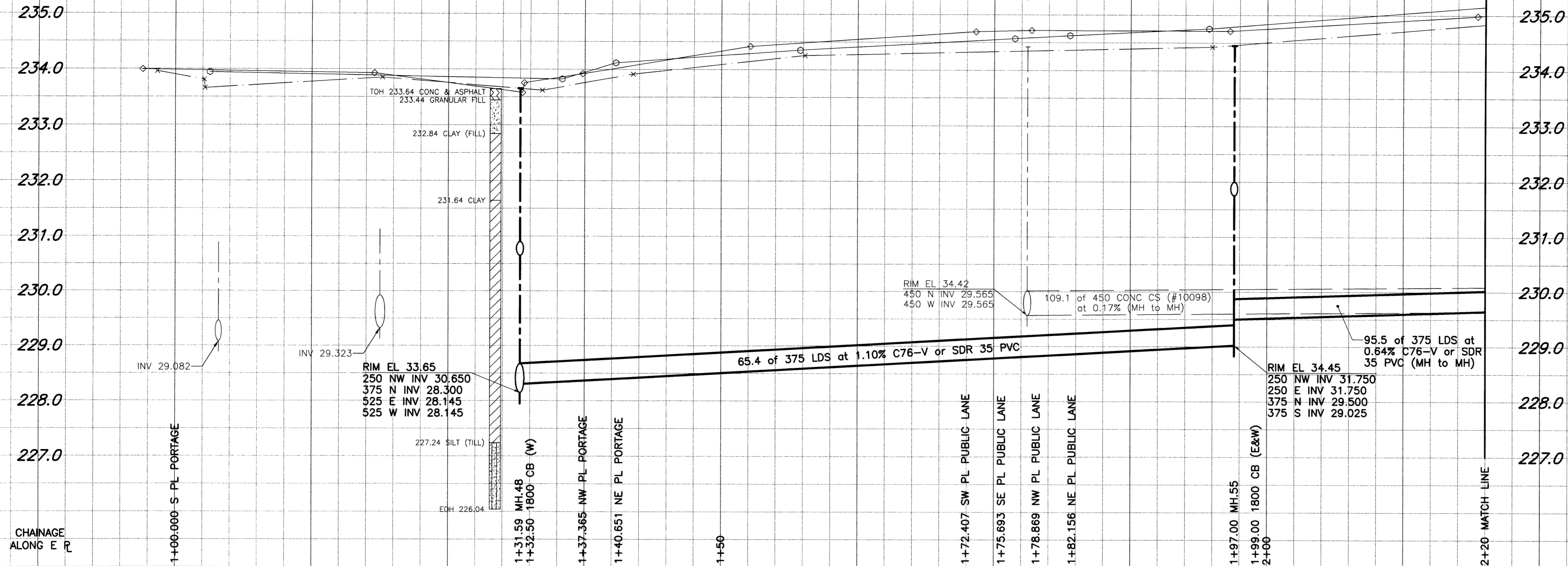
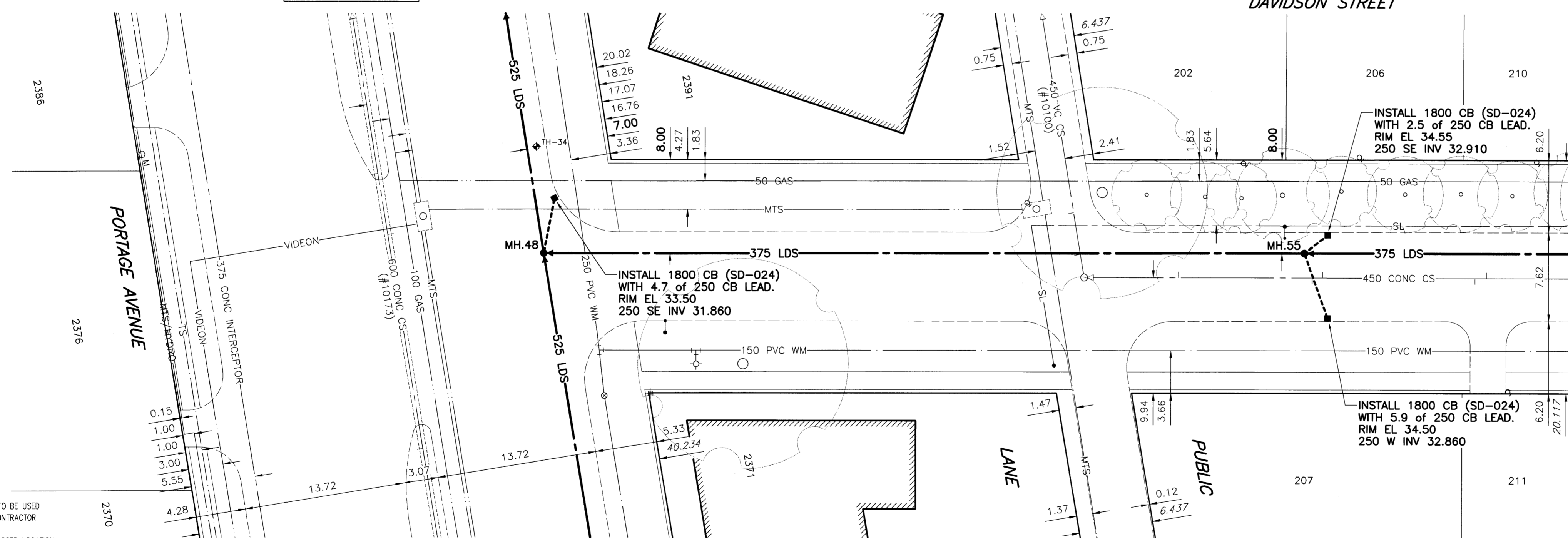


D. SIZE 22" x 34" (558mm x 863mm)

EXISTING FEATURES



FOR FURTHER INFO SEE DWG. No. LD-3001

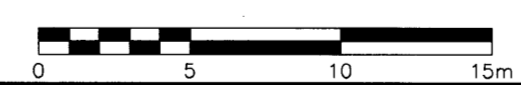


MATCH LINE - SEE DWG No LD-3007

WARNING

IF POWER EQUIPMENT OR EXPLOSIVES ARE TO BE USED FOR EXCAVATION ON THIS PROJECT, THE CONTRACTOR MUST:
 1) NOTIFY THE GAS COMPANY OF THE PROPOSED LOCATION OF EXCAVATION.
 2) TAKE PRECAUTION TO AVOID DAMAGE TO GAS COMPANY INSTALLATIONS.
 SEE PROVINCIAL REGULATION 140/92 FOR DETAILS

FOR FURTHER INFO SEE DWG. No. LD-3001



METRIC
 WHOLE NUMBERS INDICATE MILLIMETRES
 DECIMALIZED NUMBERS INDICATE METRES

APCM
 Certificate of Authorization
 UMA Engineering Ltd.
 No. 256 Expiry: April 30, 2004

- CONSTRUCTION NOTES:**
- For detailed test hole information, see specifications.
 - The location of all services is to be confirmed in the field.
 - Install new sewers and catchbasin leads by trenchless methods wherever possible.
 - Renew/Rehabilitate catchbasins & renew catchbasin leads where noted.

Bid Opportunity No. 142-2004

150 mm WM	WATERMAIN	150 mm WM	HYDRO	150 mm WM	WATERMAIN
Hydrant	HYDRANT	Hydrant	MTS	Hydrant	HYDRANT
Valve	VALVE	Valve	GAS	Valve	VALVE
300 mm LDS	LAND DRAINAGE SEWER	300 mm LDS	CONCRETE	300 mm LDS	LAND DRAINAGE SEWER
250 mm WWS	WASTE WATER SEWER	250 mm WWS	ASPHALT	250 mm WWS	WASTE WATER SEWER
Manhole	MANHOLE	Manhole	CURB STOP	Manhole	MANHOLE
Catch Basin	CATCH BASIN	Catch Basin	REDUCER	Catch Basin	CATCH BASIN
Curb Inlet	CURB INLET	Curb Inlet	COUPLING	Curb Inlet	CURB INLET
Culvert	CULVERT	Culvert	ANODE	Culvert	CULVERT
Survey Bar	SURVEY BAR	Survey Bar	WM MONITORING STATION	Survey Bar	SURVEY BAR
Pipe Abandonments	PIPE ABANDONMENTS	Pipe Abandonments		Pipe Abandonments	PIPE ABANDONMENTS
Existing	LEGEND - PLAN	Proposed	Existing	LEGEND - PROFILE	Proposed

LOCATION APPROVED UNDERGROUND STRUCTURES

DATE: _____

NOTE: LOCATION OF UNDERGROUND STRUCTURES AS SHOWN ARE BASED ON THE BEST INFORMATION AVAILABLE, BUT NO GUARANTEE IS GIVEN THAT ALL EXISTING UTILITIES ARE SHOWN OR THAT THE GIVEN LOCATIONS ARE EXACT. CONFIRMATION OF EXISTENCE AND EXACT LOCATION OF ALL SERVICES MUST BE OBTAINED FROM THE INDIVIDUAL UTILITIES BEFORE PROCEEDING WITH CONSTRUCTION.

B.M. 39-057	N.E. Cor. Portage Ave. & Strathmillan Rd.,	DATE	BY
ELEV. 233.241	Tilt. on top of 0.05m dia. x 2.4m iron pipe on N. line of Portage Ave. & 2m W. of E.L. Strathmillan Rd. along N. line of Portage Ave.		
NO.	REVISIONS	DATE	BY

UMA Engineering Ltd.
 Consulting • Engineering • Construction • Management Services

DESIGNED BY: FMI
 CHECKED BY: CCW
 DRAWN BY: ADL
 APPROVED BY: *[Signature]*
 HOR. SCALE: 1:250
 VERTICAL: 1:50
 DATE: 09/03/2004
 DATE: March 26/04

PROFESSIONAL'S SEAL
 PROVINCE OF MANITOBA
 26 MAR. 04
 C.C. MACEY
 REGISTERED ENGINEER
 CONSULTANT DRAWING NO. 07
 D265-096-04

THE CITY OF WINNIPEG
 WATER AND WASTE DEPARTMENT

STRATHMILLAN/MOORGATE
 COMBINED SEWER RELIEF
 CONTRACT 7
 DAVIDSON STREET
 PORTAGE AVE.
 to 80m N of PORTAGE AVE.

SHEET 07 OF 09
 CITY DRAWING NUMBER
 LD-3006
 REV