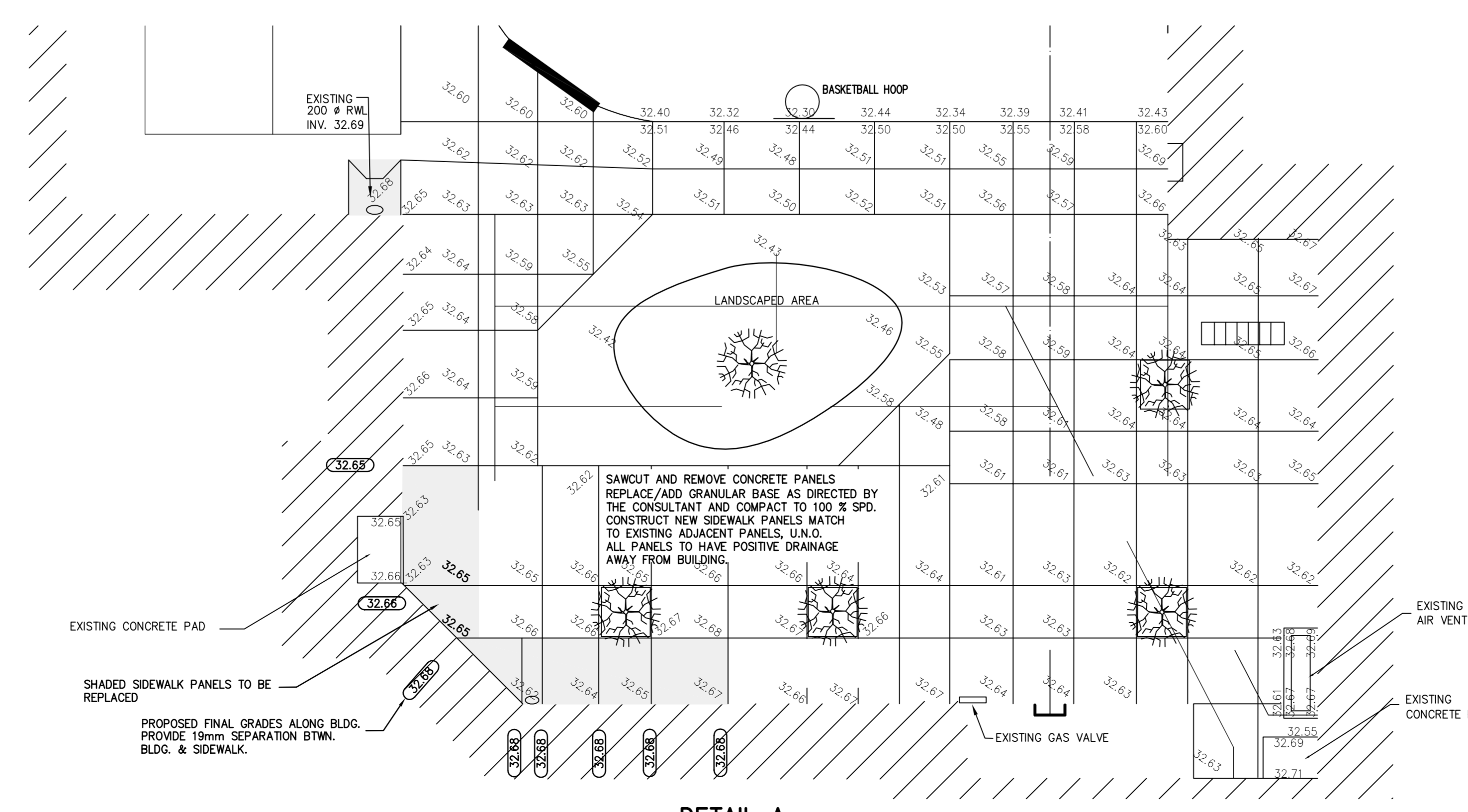
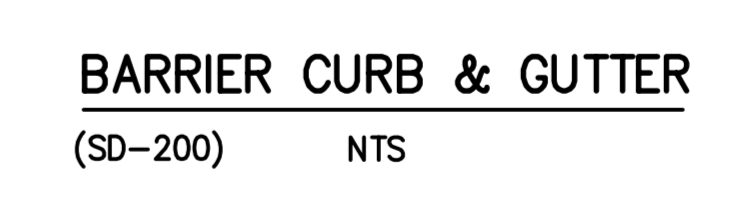
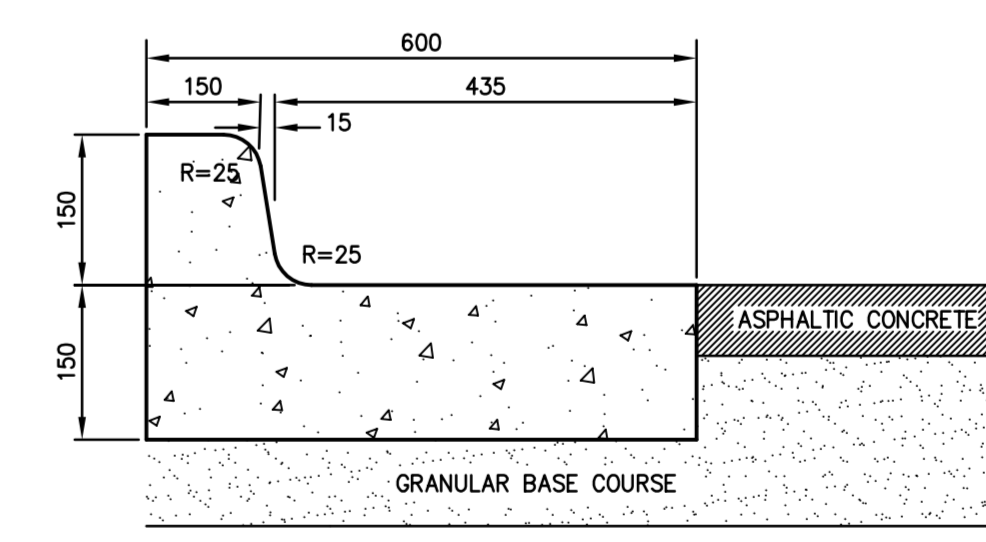
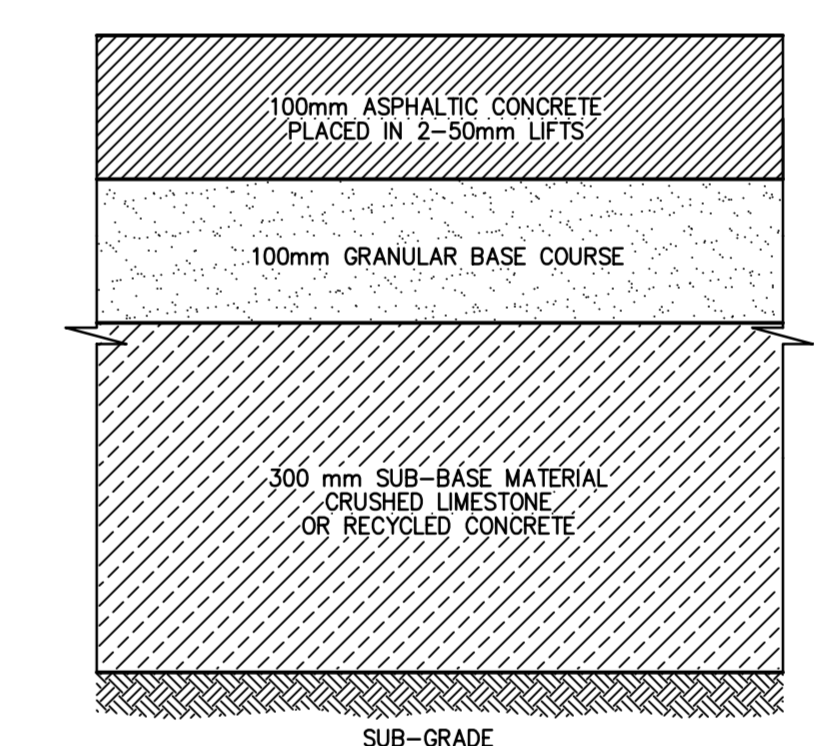
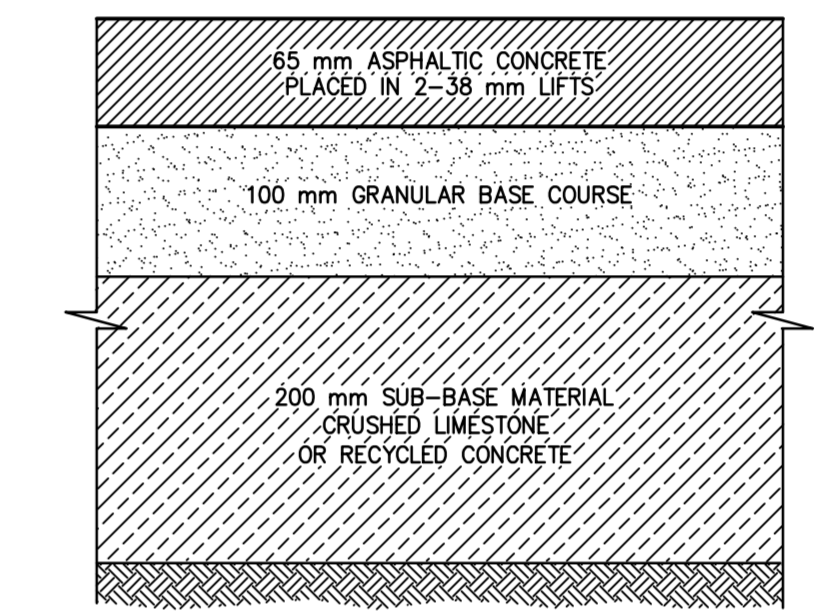
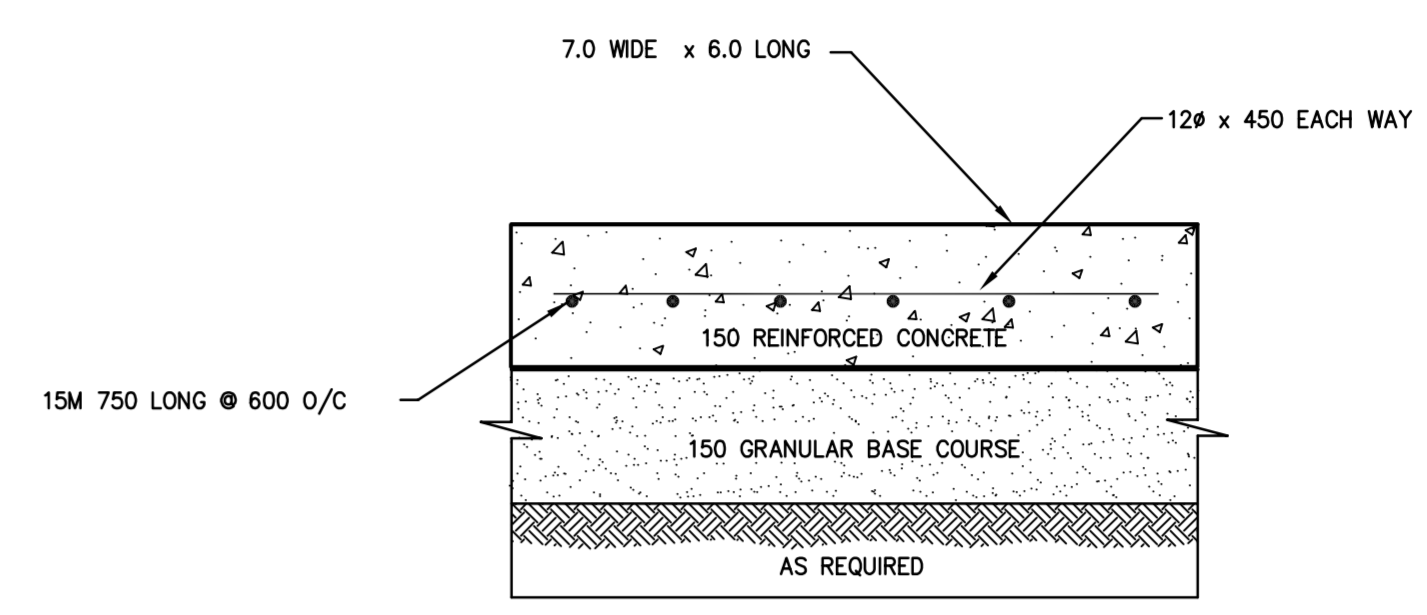


- NOTES**
1. ALL MATERIALS SUPPLIED & MUNICIPAL SERVICES INSTALLATIONS SHALL BE ACCORDANCE TO THE LATEST EDITION OF THE CITY OF WINNIPEG STANDARD CONSTRUCTION SPECIFICATIONS.
  2. BENCHMARK: CHBM 36-035, EL. 232.873, 1140 PACIFIC AVENUE.
  3. CONTRACTORS SHALL BE RESPONSIBLE FOR CONFIRMING ALL ELEVATIONS PRIOR TO CONSTRUCTION. ANY CONFLICTS OR DISCREPANCIES MUST BE REPORTED TO THE CONSULTANT IMMEDIATELY.
  4. ALL SERVICES SHALL BE OPEN CUT WITH CLASS 2 BEDDING AND BACKFILL UNLESS OTHERWISE NOTED.
  5. WASTEWATER SEWER PIPE SHALL BE PVC, DR-35.
  6. ALL CATCHBASIN LEADS SHALL BE 250 mm DIAMETER PVC.
  7. CATCHBASINS IN CURBS SHALL BE SD-224, 1800 HT., SD-225, 1800 HT.
  8. PROPOSED PIPE LENGTHS ARE APPROXIMATE ONLY. ACTUAL DIMENSIONS MAY VARY. ALL SERVICE PIPES TO BE CONSTRUCTED TO WITHIN 2.0 m OF BUILDING FOUNDATION. EACH LOCATION AND DEPTH TO BE INDICATED WITH A 2 x 4 STAKE.



EXISTING	LEGEND-PLAN	PROPOSED	EXISTING	LEGEND-PLAN	PROPOSED
---	PROPERTY LINE	---	---	PROPERTY LINE	---
---	ELEVATION	(32.00)	---	ELEVATION	(32.00)
---	FUTURE LDS	---	---	FUTURE LDS	---
---	WATERMAIN	---	---	WATERMAIN	---
---	HYDRANT	---	---	HYDRANT	---
---	VALVE	---	---	VALVE	---
---	LAND DRAINAGE SEWER	---	---	LAND DRAINAGE SEWER	---
---	WASTE WATER SEWER	---	---	WASTE WATER SEWER	---
---	MANHOLE	---	---	MANHOLE	---
---	CATCH BASIN	---	---	CATCH BASIN	---
---	FLOW	---	---	FLOW	---
---	CURB AND GUTTER	---	---	CURB AND GUTTER	---
---	200 CONCRETE	---	---	200 CONCRETE	---
---	LIGHT DUTY ASPHALT	---	---	LIGHT DUTY ASPHALT	---
---	HEAVY DUTY ASPHALT	---	---	HEAVY DUTY ASPHALT	---
---	BARRIER CURB AND GUTTER	---	---	BARRIER CURB AND GUTTER	---

GEODETIC : 200.00

**METRIC**  
WHOLE NUMBERS INDICATE MILLIMETRES  
DECIMALIZED NUMBERS INDICATE METRES

**NDLEA** Engineers & Planners Inc.  
Suite 111-83 Lombard Avenue Winnipeg, Manitoba R3B 3B1  
Phone (204) 943-3178 Facsimile (204) 943-4948  
SCALE 1:400

**FRIESEN TOKAR ARCHITECTS**

**THE CITY OF WINNIPEG**

OFFICE ADDITION AND RENOVATION  
1155 PACIFIC AVENUE  
WINNIPEG, MANITOBA

**A1.2.R1**

Friesen Tokar Architects  
200 - 2033 Postage Avenue  
Winnipeg, Canada R3J 0K8  
Tel: 204.865.9223  
Fax: 204.837.7235

1:11 ADDITIONAL REVISIONS TO SHEET LAYOUT AND DRAWING



Drawings and specifications, as instruments of service are the property of the architect. The copyright in the same shall remain to the architect. No reproduction or other use shall be made without the permission of the architect. All data to be returned to the architect. The architect shall verify dimensions and data noted herein with conditions on site and shall hold responsible for reporting any discrepancy to the architect for adjustment. This drawing shall not be used for building purposes until counterchecked by:

DATE: PROJECT FILE: DRAWN BY: PROJECT FILE: