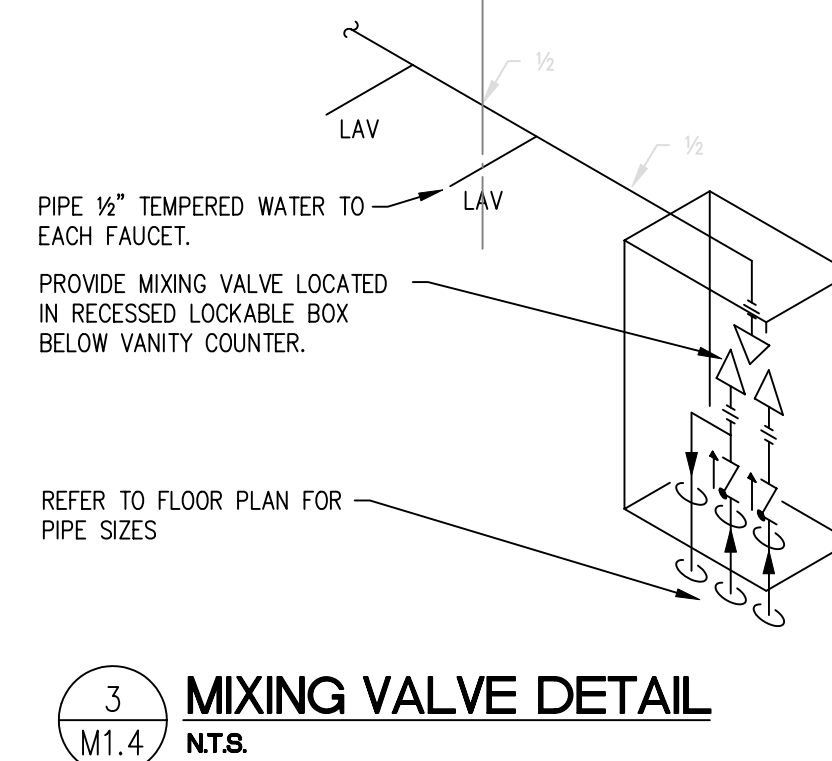
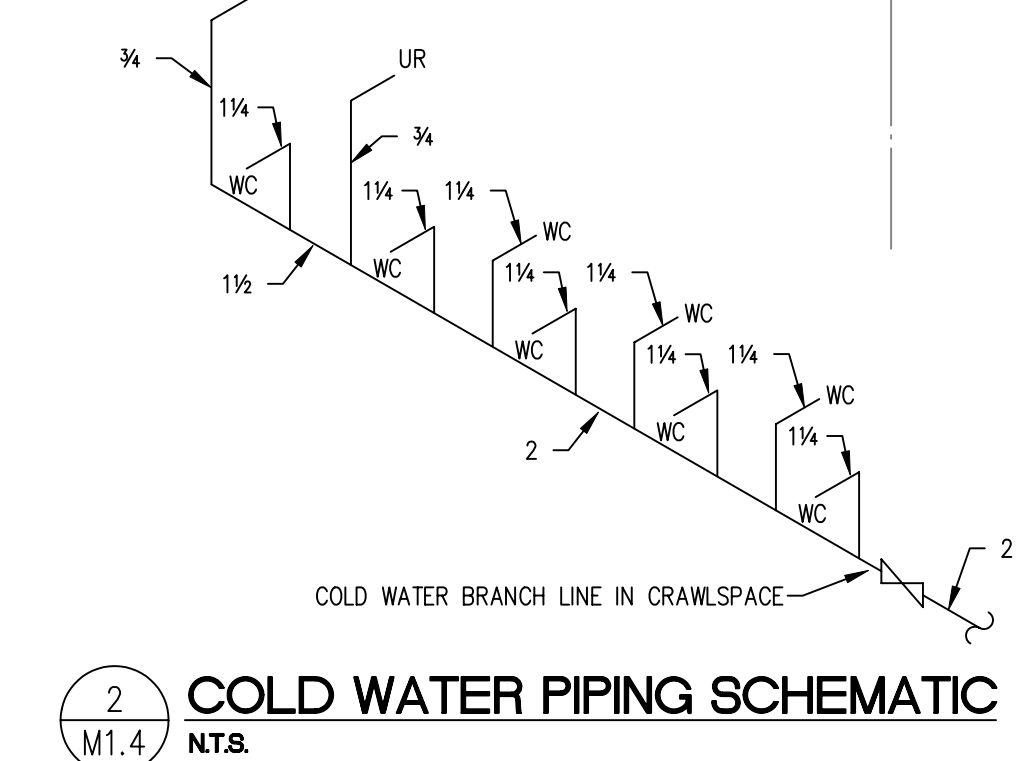
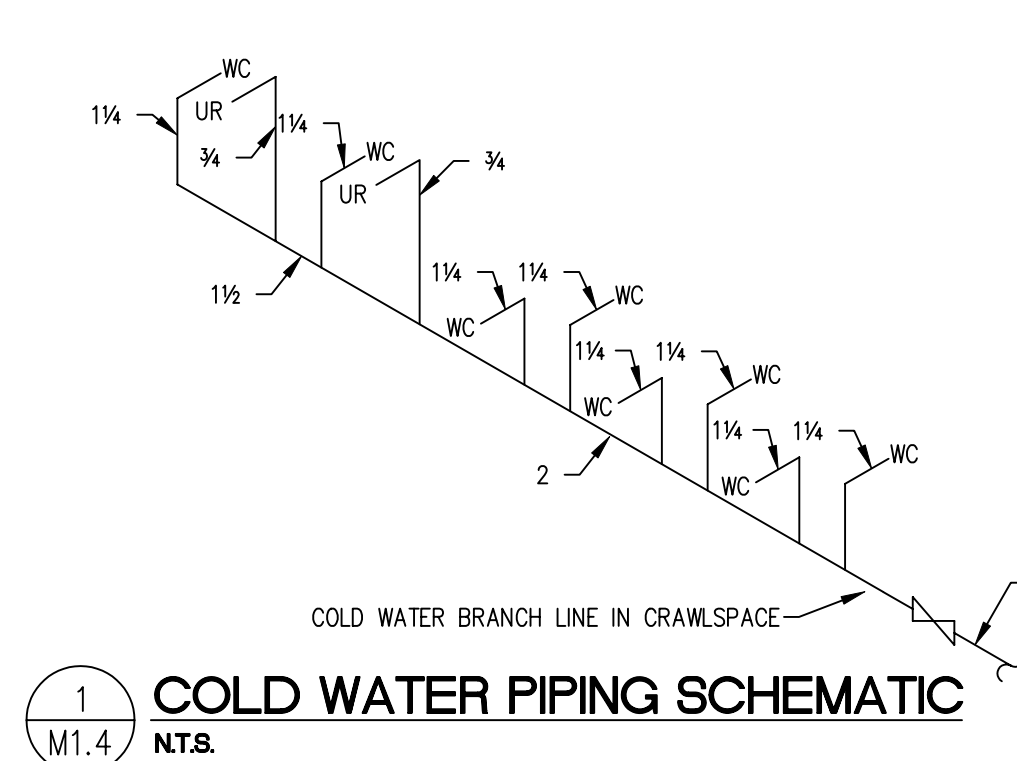


- DRAWING NOTES:**
- PROVIDE NEW NON-FREEZE WALL HYDRANT.
  - PROVIDE 1/2" VALVED AND CAPPED CONNECTION FOR FUTURE COFFEE MAKER.
  - PROVIDE NEW FIRE HOSE CABINET.
  - 8" RAIN WATER LEADER DOWN PIPE THRU WALL AND SPILL ON GRADE. RAIN WATER LEADER TO BE INSULATED AS SPECIFIED AND HEAT TRACED BY DIVISION 16. PROVIDE STAINLESS STEEL EXTENSION 300mm PAST WALL FACE. REFER TO ARCHITECTURAL RAINWATER LEADER EXIT DETAIL.
  - 10" RAIN WATER LEADER DOWN PIPE THRU WALL AND SPILL ON GRADE. RAIN WATER LEADER TO BE INSULATED AS SPECIFIED AND HEAT TRACED BY DIVISION 16. PROVIDE STAINLESS STEEL EXTENSION 300mm PAST WALL FACE. REFER TO ARCHITECTURAL RAINWATER LEADER EXIT DETAIL.
  - 1 1/2" SUMP PUMP DISCHARGE LINE UP FROM CRAWLSPACE. PIPE THRU WALL AND SPILL ON GRADE. SUMP PUMP DISCHARGE LINE TO BE INSULATED AS SPECIFIED AND HEAT TRACED BY DIVISION 16.
  - 6" ROOF DRAIN ABOVE.
  - 4" ROOF DRAIN ABOVE.
  - 1/2" COLD WATER LINE C/W SHUT-OFF UP TO HUMIDIFIER IN AHU ON ROOF. PROVIDE 1 1/4" TRAPPED DRAIN LINE AND CONNECT TO HUMIDIFIER.
  - HUMIDIFIER CONDENSATE DRAIN PIPING DROP DOWN IN WALL. RUN DRAIN LOCAL OVER 2" HUB DRAIN IN COUNTER SPACE.
  - CONDENSATE DRAIN PIPING RUN IN CEILING SPACE.
  - 1 1/2" COLD WATER LINE UP TO W.C. AND HUMIDIFIER. PIPE 1 1/4" TO W.C. AND 1/2" C/W SHUT-OFF VALVE TO HUMIDIFIER. PROVIDE 1 1/4" TRAPPED DRAIN LINE CONNECTION TO HUMIDIFIER.
  - RUN HUMIDIFIER CONDENSATE DRAIN LINE LOCAL OVER 2" FUNNEL FLOOR DRAIN (FFD-2).
  - VENT UP THRU ROOF.
  - 1/2" HOT AND COLD WATER UP TO FIXTURE FROM CRAWLSPACE.
  - 1/2" HOT, COLD, AND 1/2" REGR. WATER LINES UP FROM CRAWLSPACE TO MIXING VALVE LOCATED IN RECESSED BOX IN WALL BELOW FIXTURES. REFER TO DETAIL 3/M.4 FOR PIPING HOOK-UP.
  - 1/2" COLD WATER UP FROM BELOW SERVING HUMIDIFIERS. RUN COLD WATER IN CEILING SPACE.
  - 1/2" HOT, 1 1/4" COLD, AND 1/2" REGR. LINES DOWN TO CRAWLSPACE.
  - NEW DOMESTIC HOT WATER REGR. PUMP. REFER TO SPEC.
  20. 1 1/4" COLD WATER RUN IN WALL TO WATER CLOSET.
  21. 1 1/4" COLD WATER UP TO WATER CLOSET.
  22. 1/2" HOT AND 1 1/4" COLD WATER UP FROM CRAWLSPACE. PIPE 1/2" HOT AND COLD TO SHOWER AND 1 1/4" COLD WATER TO WATER CLOSET.
  23. REFER TO PIPING SCHEMATIC 1/M.4 FOR COLD WATER PIPING ARRANGEMENT AND SIZING.
  24. REFER TO PIPING SCHEMATIC 2/M.4 FOR COLD WATER PIPING ARRANGEMENT AND SIZING.
  25. MAIN BUILDING CLEANOUT AT MAIN FLOOR LEVEL.
  26. MIXING VALVE LOCATED IN RECESSED BOX IN WALL BELOW FIXTURE(S).
  27. 1/2" HOT, COLD, AND 1/2" REGR. WATER LINES UP FROM CRAWLSPACE. RUN PIPING IN WALL TO MIXING VALVE LOCATED IN RECESSED BOX BELOW FIXTURE(S). REFER TO DETAIL 3/M.4 FOR PIPING HOOK-UP.
  28. 1/2" HOT AND COLD WATER UP TO SHOWER.
  29. 1/2" HOT, COLD, AND 1/2" REGR. WATER LINES UP FROM CRAWLSPACE INSIDE WALL. FURNISH TO MIXING VALVE LOCATED IN RECESSED BOX IN WALL BELOW FIXTURES. REFER TO DETAIL 3/M.4 FOR PIPING HOOK-UP.
  30. HUMIDIFIER CONDENSATE DRAIN LINE RUN IN CEILING SPACE.
  31. 1/2" COLD WATER UP FROM CRAWLSPACE TO DRINKING FOUNTAIN.
  32. CONDENSATE DRAIN PIPING CONCEALED IN WALL.
  33. PREACTION SPRINKLER SYSTEM. REFER TO SPEC.
  34. AIR COMPRESSOR PANEL. REFER TO SPEC.
  35. 4" HUB DRAIN.
  36. EXPANSION TANK. REFER TO SPEC DETAIL.
  37. 2" FLOOR DRAIN (FD-3).
  38. 2" FUNNEL FLOOR DRAIN (FFD-2).
  39. NEW HOT WATER TANK ON 4" HOUSEKEEPING PAD. REFER TO SPEC.

FOR CONTINUATION, REFER TO DRAWING M.5



**PART MAIN FLOOR PLAN**  
SCALE 1/8"=1'-0"

Friesen Tokar Architects  
200 - 2033 Portage Avenue  
Winnipeg, Canada R3J 0K8  
Tel. 204.885.9223  
Fax. 204.837.7235

DESIGN BY	KM
DESIGNED BY	HW
DATE	MAY 2004
PROJECT NO.	01.716
FILE PATH	

- REVISIONS**
- ISSUED FOR 50% REVIEW FEBRUARY 6, 2004
  - ISSUED FOR 75% REVIEW MARCH 5, 2004
  - ISSUED FOR PRETENDER REVIEW APRIL, 2004
  - ISSUED FOR TENDER MAY 14, 2004

**SMS ENGINEERING**  
SMS Engineering Ltd. Consulting Engineers  
770 Redwood Street Winnipeg MB Canada R2N 1N9  
Telephone: 204.778.0891 Fax: 204.778.2158  
smseng.com

02-018-01  
ORIGINAL CONTRACT DRAWING  
SKINNED AND SEALED BY  
V.S. WALKER P.E. ENG.  
MAY 13, 04

**APEM**  
Certificate of Authorization  
SMS Engineering Ltd.  
No. 908 Expiry: April 20, 2005

Drawings and specifications, in whole or in part, are the property of the architect and shall remain the property of the architect. No reproduction or use of any part of the drawings or specifications may be made without the written consent of the architect and when made, shall bear the name of the architect. The contractor shall verify dimensions and data noted herein with conditions of contract and shall be held responsible for reporting any discrepancies to the architect for adjustment. This drawing shall not be used for building purposes until countersigned by:

THE CITY OF WINNIPEG

PROJECT TITLE

**OFFICE ADDITION AND RENOVATION  
1155 PACIFIC AVENUE  
WINNIPEG, MANITOBA**

**FRIESEN TOKAR ARCHITECTS**

MAIN FLOOR PLAN - PART A  
PLUMBING AND FIRE PROTECTION

**M1.4R1**