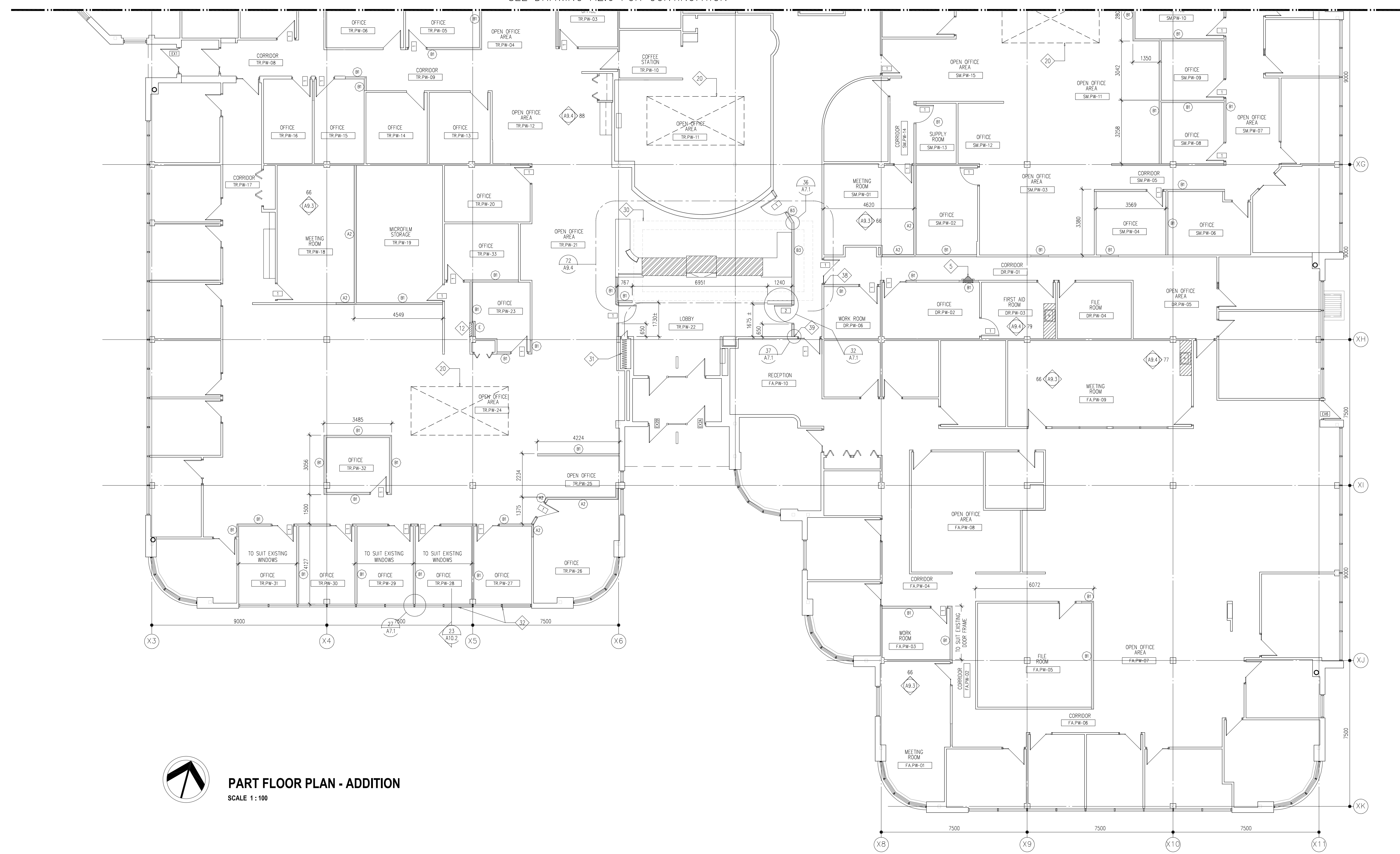
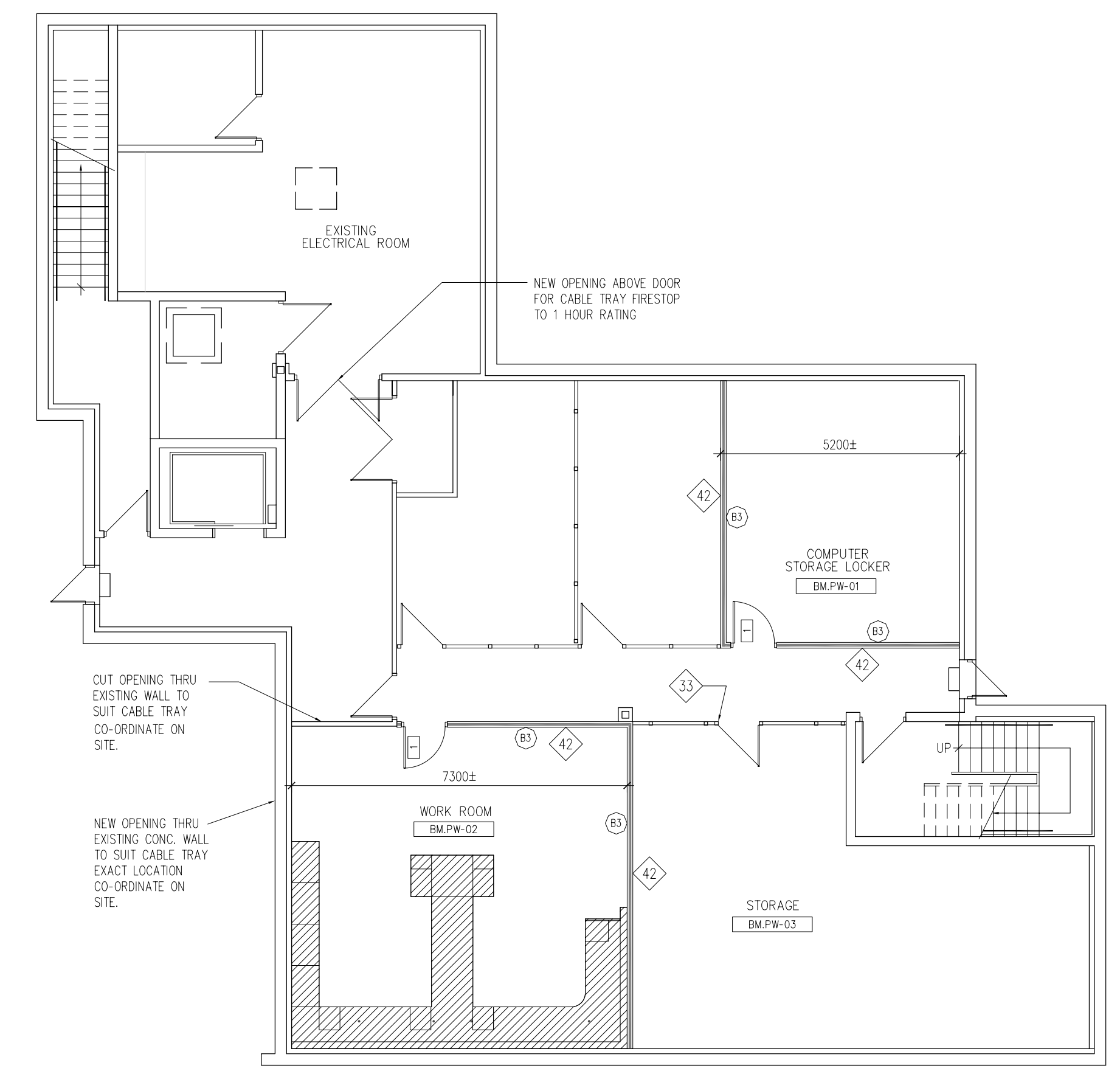


SEE DRAWING A2.6 FOR CONTINUATION



**PART FLOOR PLAN - ADDITION**  
 SCALE 1:100

- CONSTRUCTION - KEYNOTES:**  
 FOR DRAWING ALL A2.6 AND A2.7
- 1 HEAVY ELEMENT COVER - PAINT TYPICAL SEE MECHANICAL.
  - 2 FLOOR GRILLE - SEE MECHANICAL FOR SIZE
  - 3 DRAINAGE LEADER - SEE MECHANICAL FURR OUT WITH WALL TYPE C.
  - 4 FIRE HOSE CABINET - PAINT SEE MECHANICAL.
  - 5 SHW RECESSED FIRE EXTINGUISHER CABINET - PAINT
  - 6 DRINKING FOUNTAIN - SEE MECHANICAL
  - 7 LIBRARY DEN.W-24 HIGH DENSITY MOBILE SHELVING PROVIDE RECESS IN SLAB FOR RECESS SHELVED TRACKS
  - 8 15 x 80mm WOOD BLOCK CAST IN PLACE IN CONCRETE TOPPING FOR FUTURE REMOVAL TO ACCEPT RECESS WOOD SHELVING TRACK.
  - 9 DUCT - SEE MECHANICAL.
  - 10 WOP SINK - SEE MECHANICAL STAINLESS STEEL WALL PROTECTION 300mm A.F.F., 300mm BEYOND SINK
  - 11 FLOOR ACCESS HATCH STEEL LADDER TO DRUMSPACE BY MISC METAL
  - 12 ELECTRICAL PANELS - PAINT (TYPICAL)
  - 13 GYPSUM BOARD AND STEEL STUD PARTITION OVER
  - 14 CORNER GUARD
  - 15 15mm GOOD ONE SIDE PLYWOOD DADD TO 1200mm A.F.F.
  - 16 ROOF ACCESS HATCH STEEL LADDER TO ROOF BY MISC METAL
  - 17 SURFACE MOUNT FLOOR WALL AND CEILING EXPANSION COVERS FOR NEW OPENING
  - 18 SURFACE MOUNT WALL EXPANSION CURVES
  - 19 EXISTING PRE-CAST PANEL - CUT TO SUIT PROVIDE AND-DRAGE BACK TO STRUCTURE
  - 20 NEW SKYLITE OVER REFER TO EXISTING ROOF AND REFLECTED CEILING PLANS
  - 21 WALL EXIST DOOR OPENING WITH WALL CONSTRUCTION TO MATCH EXISTING
  - 22 NEW OPENING THROUGH EXISTING MASONRY WALL PROVIDE UNTEL OVER, PATCH WALL TO MATCH EXISTING
  - 23 GALVANIZE AREA W/LL C/W 100 x 4 DRAB DOWN TO EXISTING FINISHED DRAINAGE 'SIS AREA WALL TO SUIT GAS SERVICE - SEE MECH.
  - 24 FORCE FLOW - SEE MECHANICAL.
  - 25 FURR AROUND EXISTING CONCRETE PRECAST AND STEEL COLUMN WITH WALL TYPE E - TYPICAL.
  - 26 EXISTING EXPOSED CONCRETE PRECAST AND STEEL COLUMN (CLEAN AND PAINT)
  - 27 NEW BONDED CONCRETE TOPPING AND FLOOR LEVELLER OVER EXISTING SLOPED SLAB SEE STRUCTURAL SHEETS V-1 TO AND A-4 TO B.
  - 28 CUT WINDOW OPENING IN EXISTING PRE-CAST PANEL
  - 29 CUT EXISTING PRE-CAST PANEL TO SUIT NEW WINDOW AND PANEL BELOW
  - 30 LINE OF EXISTING STEPPED BULKHEAD AT EXISTING SKYLITE OVER
  - 31 EXISTING SECURITY GRILLE PROVIDE NEW TRACK AND ROLLERS
  - 32 NEW WOOD CAP OVER EXISTING SILL WHERE WALL IS DISCONTINUED SEE W/WORK DETAIL
  - 33 DEMOLISH EXISTING SECURITY MESH PARTITION REINSTALL C/W DOOR FROM SALVAGED MATERIALS.
  - 34 FLES DEN.W-48 45 x 80mm WOOD BLOCK CAST IN PLACE IN CONCRETE TOPPING FOR FUTURE REMOVAL TO ACCEPT RECESS WOOD SHELVING TRACK. CO-ORDINATE LOCATION WITH PROOF TO CASTING CONCRETE TOPPING
  - 35 VESTIBULE DEN.W-01 100mm STEEL TUBE POST IN WALL AT EACH END C/W 100mm HORIZONTAL SUPPORT OVER ALUMINUM DOOR FRAME SEE STRUCTURAL FOR SIZES
  - 36 MECHANICAL DEN.W-35 100 HIGH HOUSEKEEPING PAD TO SUIT MECHANICAL EQUIPMENT
  - 37 OPEN OFFICE POP.W-11 AND OFFICE POP.W-12 IS GYPSUM BOARD ADHERE TO EXISTING CONCRETE SLAB ON NORTH WALL
  - 38 CENTRE NEW WALL ON WOOD TRIM
  - 39 CENTRE NEW WALL ON EXISTING WOOD SOLELIGHT FRAME.
  - 40 INDICATES EXTENT OF APPROVED LIGHTS
  - 41 PARTIAL WALL - 1200 FROM FINISHED FLOOR
  - 42 WALL TO U/S OF G.B. CEILING
  - 43 LANTOR DEN.W-18 100 HIGH CONC. HOUSEKEEPING PAD TO SUIT MECHANICAL EQUIPMENT



**2 BASEMENT FLOOR PLAN**  
 SCALE: N.T.S.