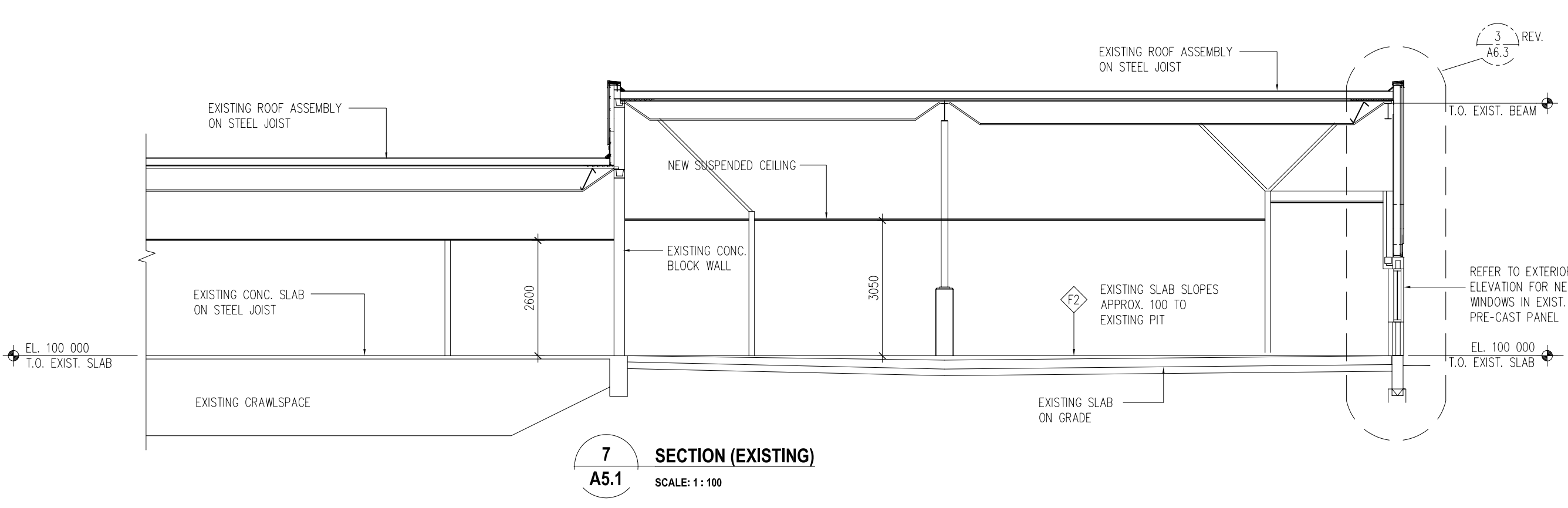
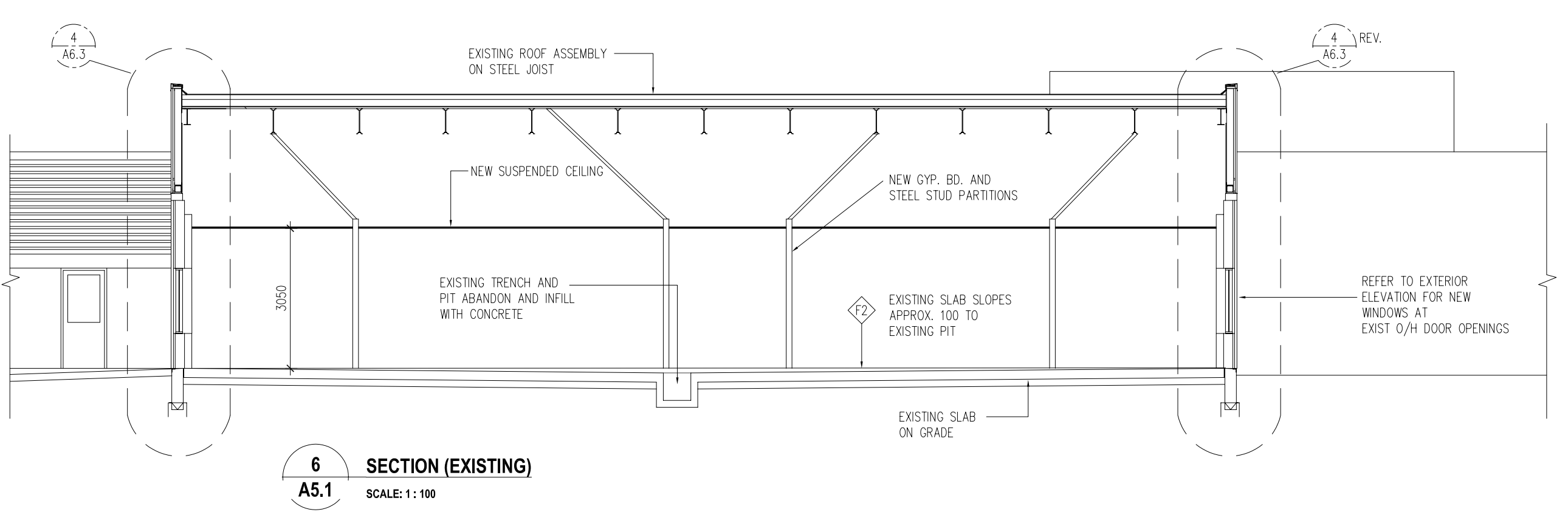
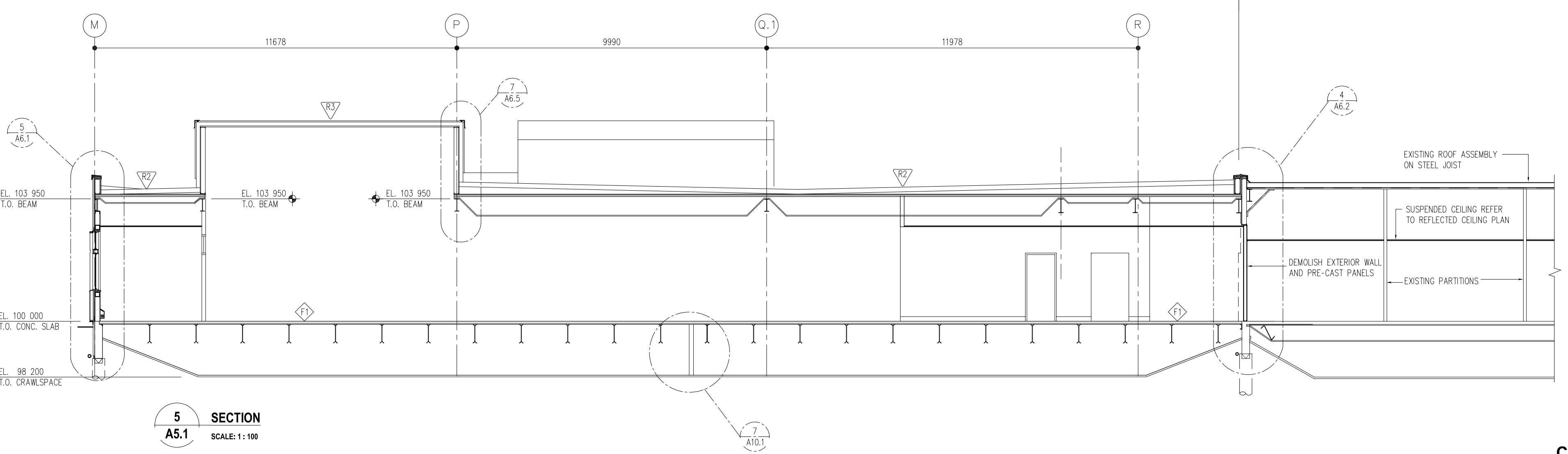
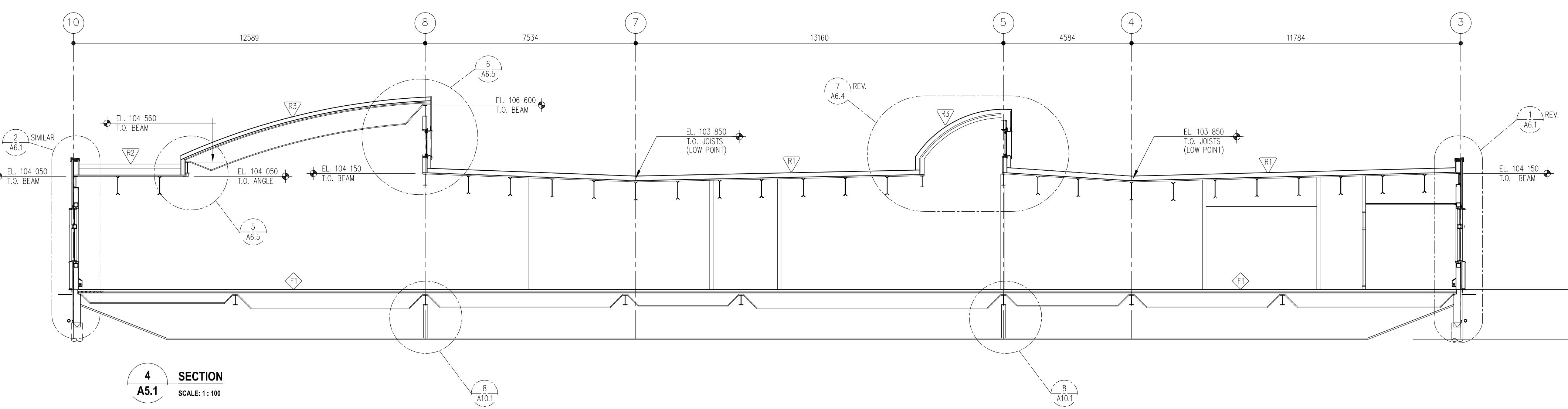
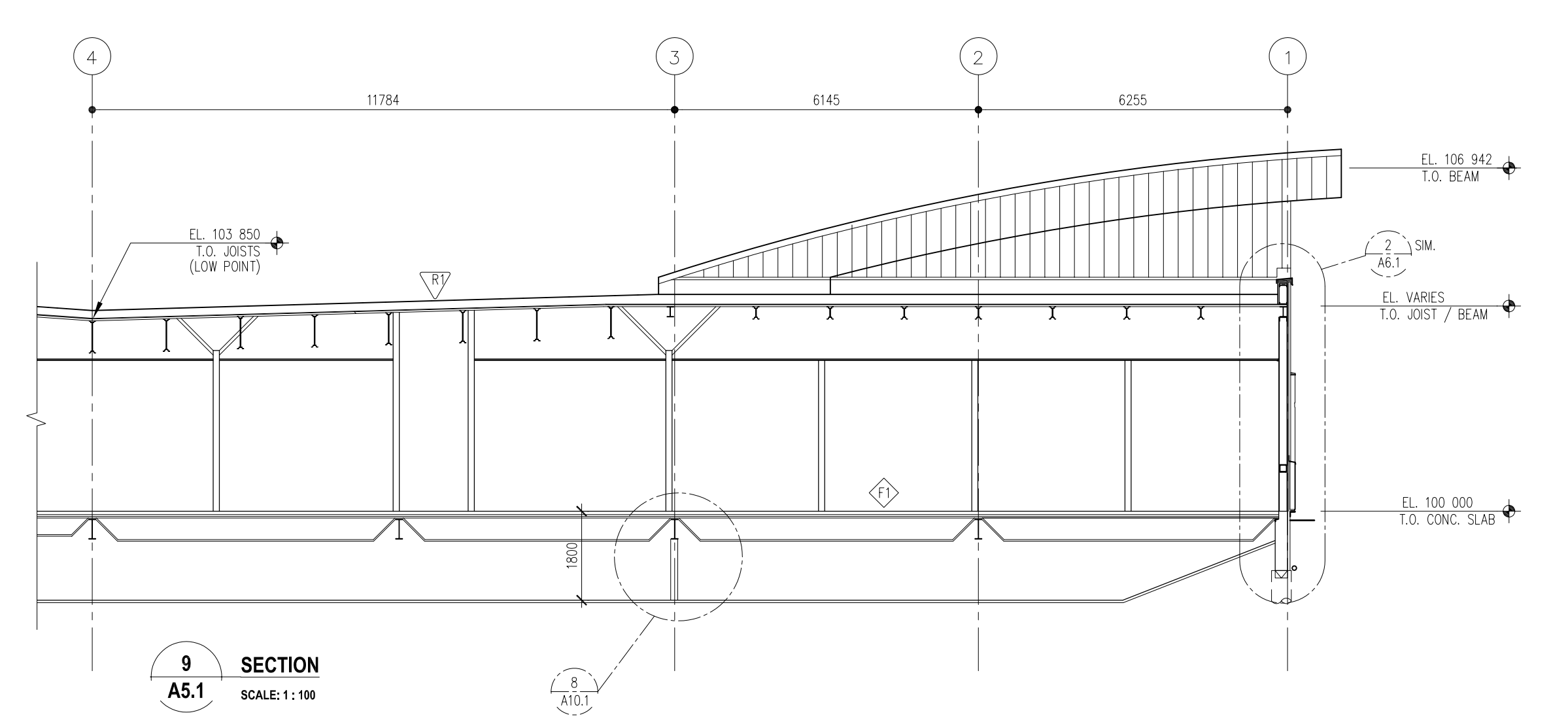
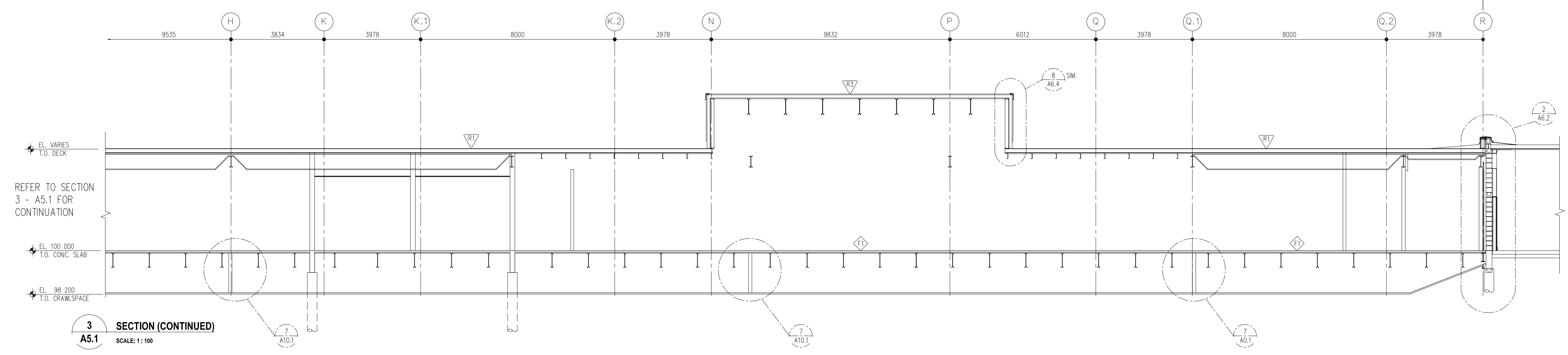
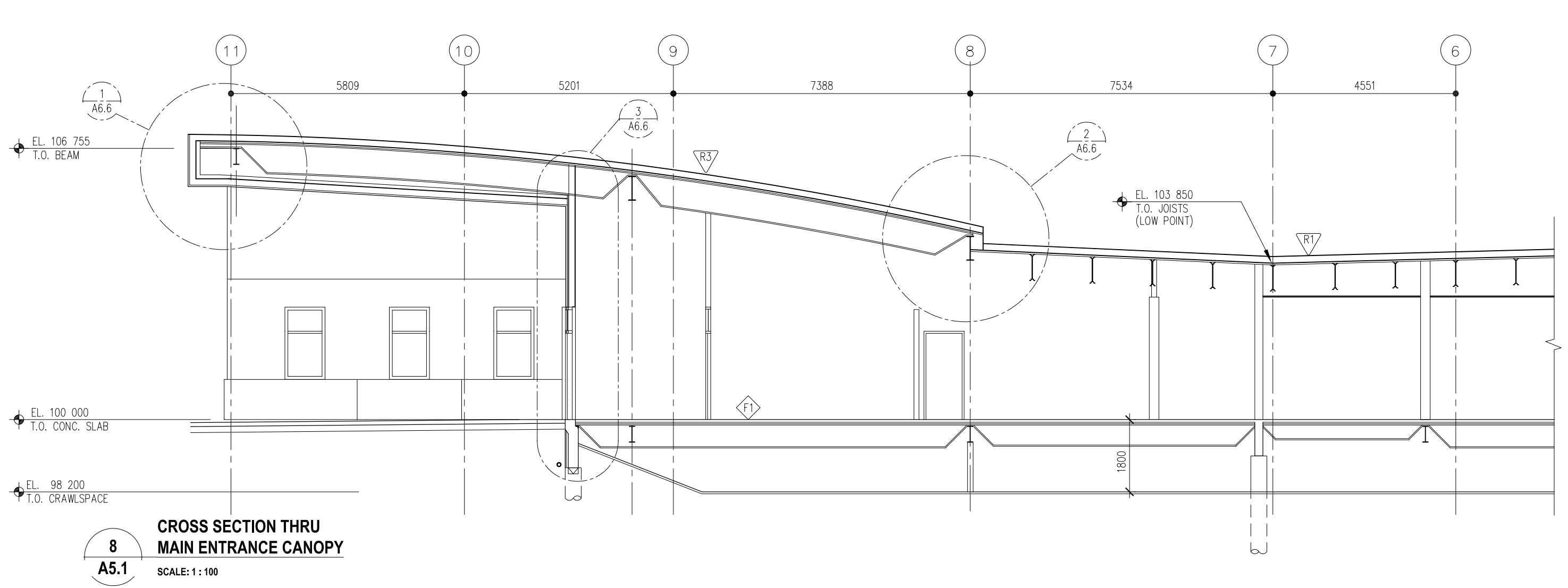
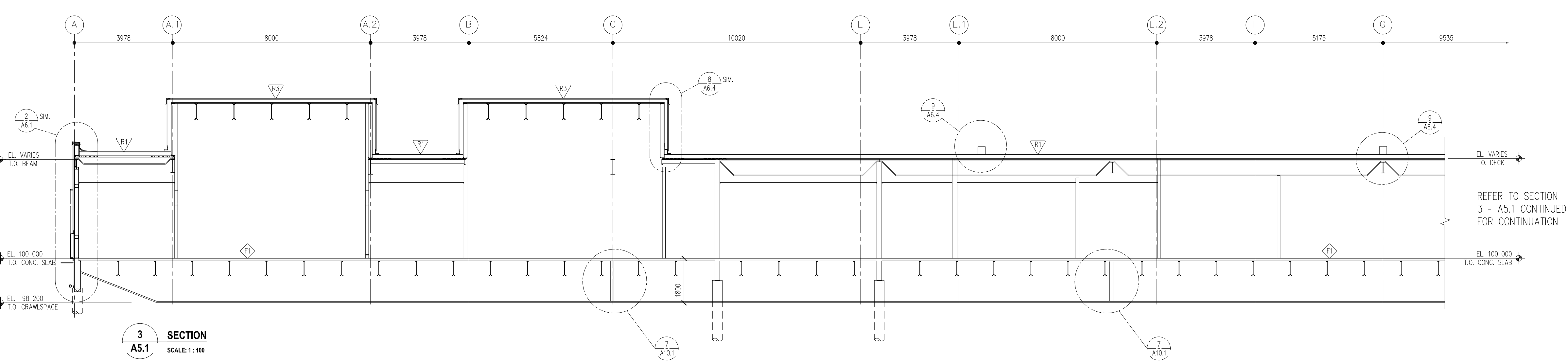
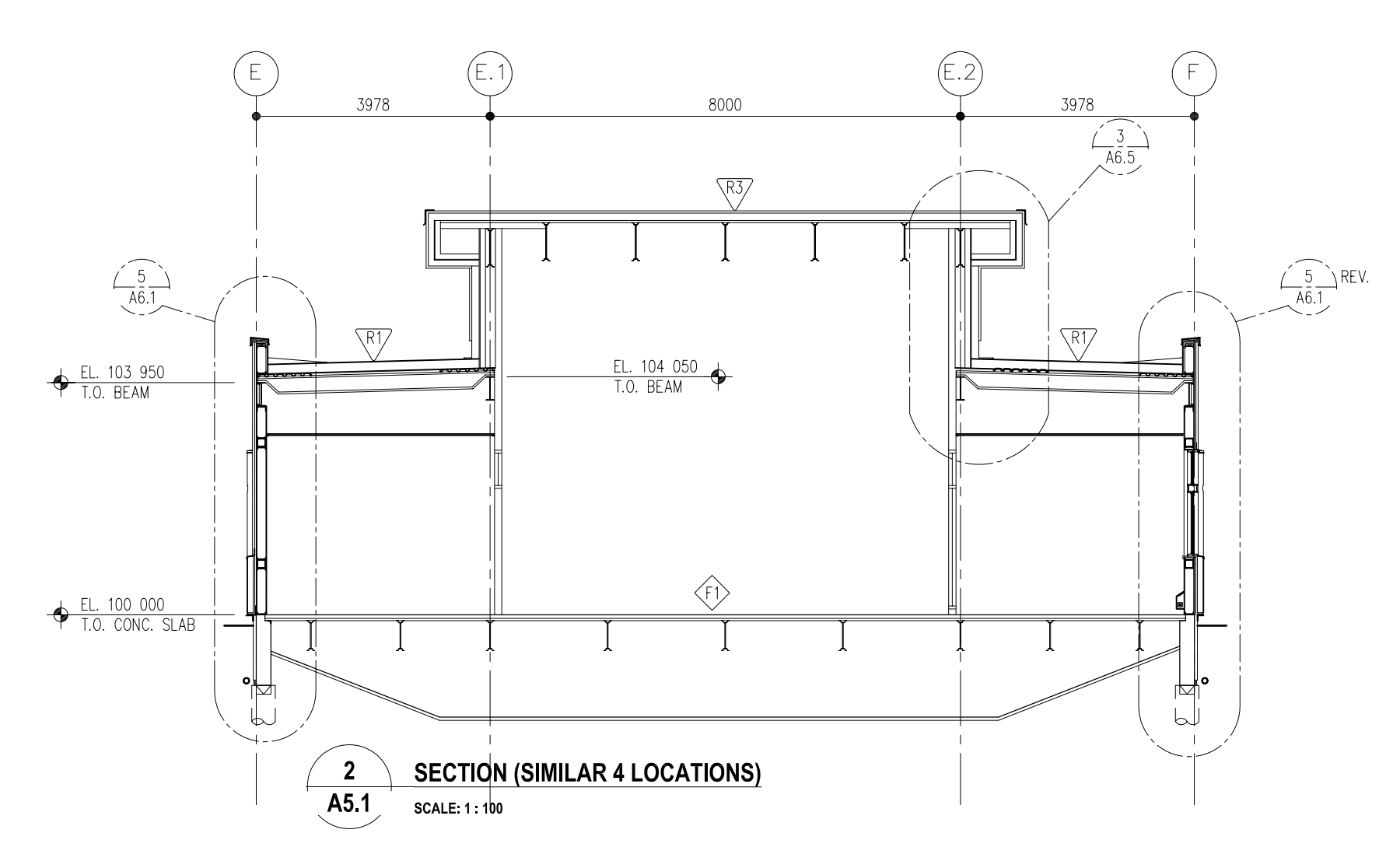
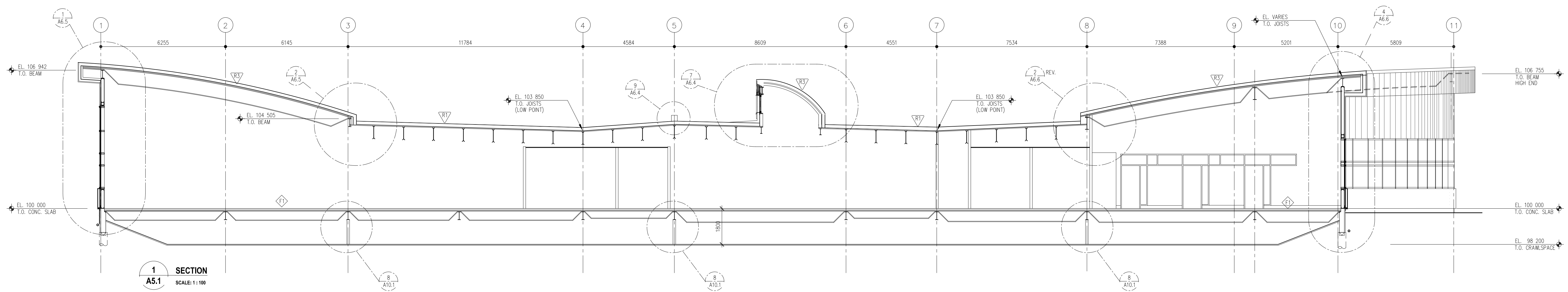


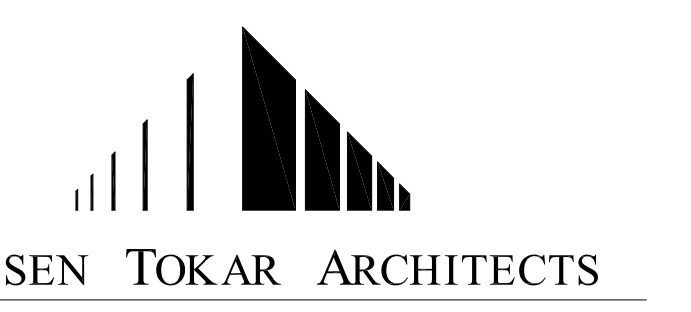
- REVISIONS:
- ISSUED FOR SITE REVIEW FEBRUARY 03, 2004
  - ISSUED FOR 70% REVIEW MARCH 04, 2004
  - ISSUED FOR 90% PRE-TENDER REVIEW APRIL 2004
  - ISSUED FOR TENDER MAY 14, 2004



Drawings and specifications, as instruments of service, are the property of the architect. No reproduction may be made without the permission of the architect and any reproduction made shall bear the name of the architect. The contractor shall verify dimensions and shall hold them with conditions on the site and is well responsible for reporting any discrepancy to the architect for clarification. This drawing shall not be used for building purposes until countersigned by:

THE CITY OF WINNIPEG

OFFICE ADDITION AND RENOVATION  
 1155 PACIFIC AVENUE  
 WINNIPEG, MANITOBA



CONTENTS: DRAWING: **A5.1**  
 BUILDING CROSS SECTIONS