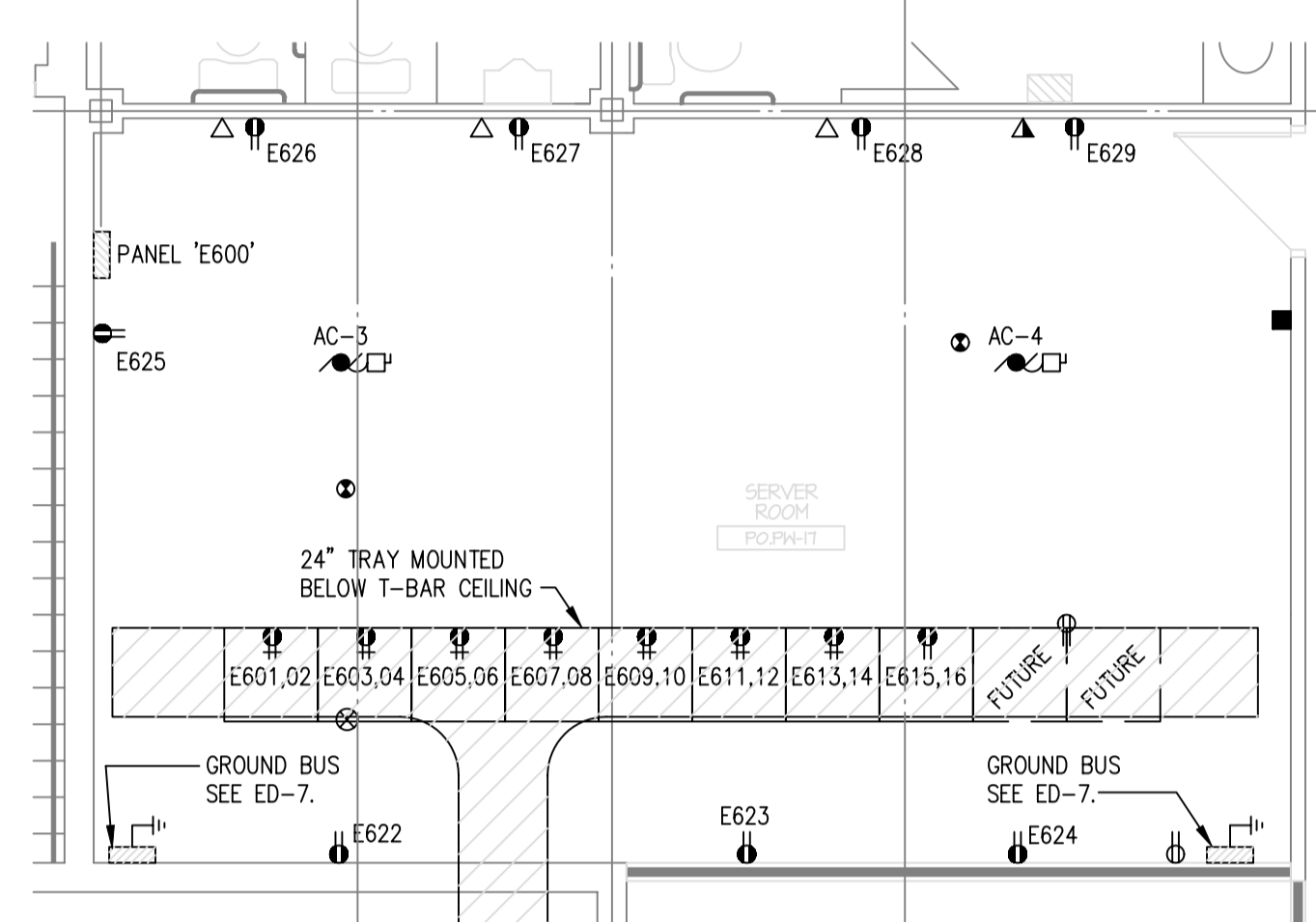
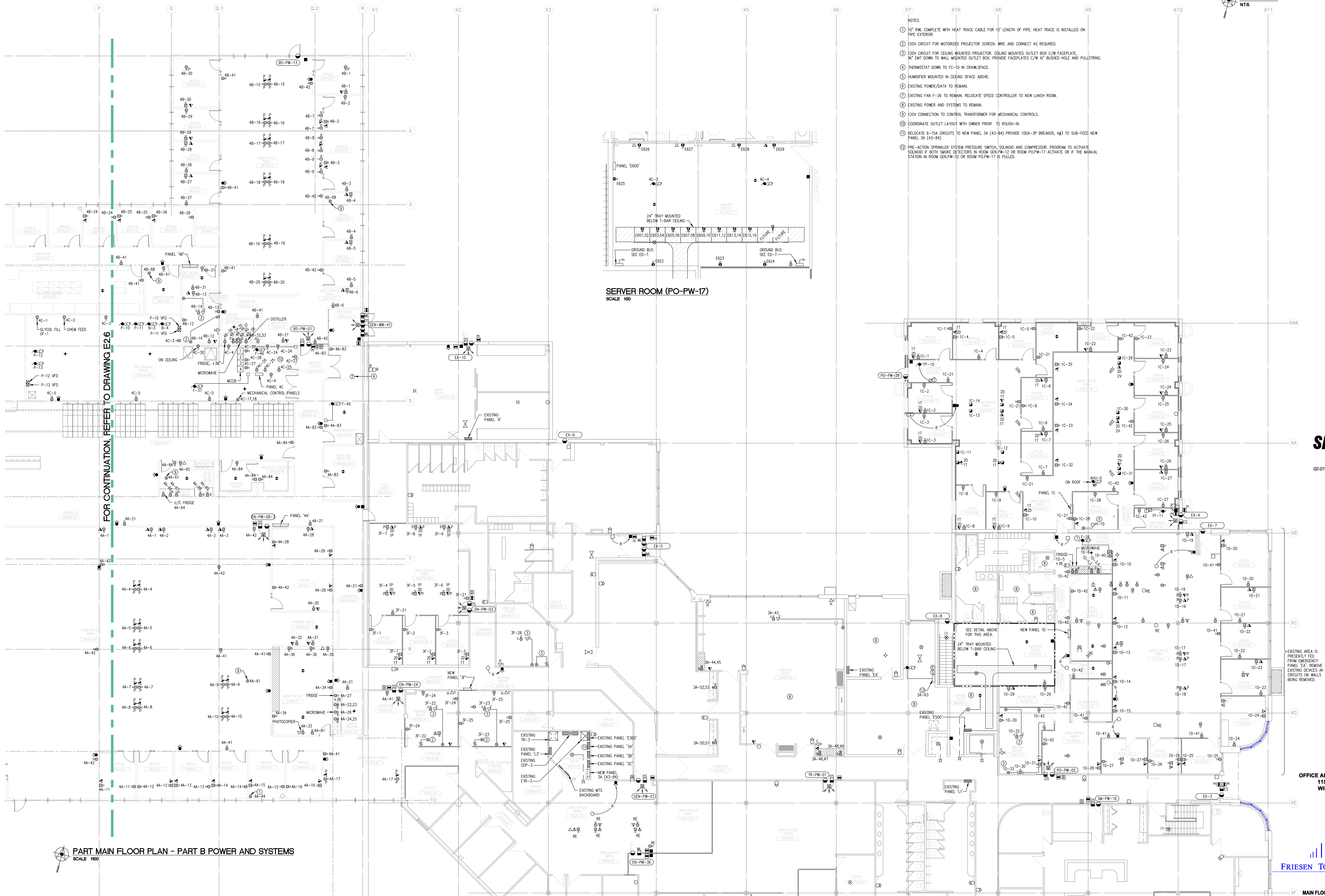


KEY PLAN NTS

Friesen Tokar Architects
200 - 2033 Portage Avenue
Winnipeg, Canada R3J 0K8
Tel. 204.883.9323
Fax. 204.837.7235

DRAWN BY	AA/RC
DESIGNED BY	CB
DATE	APRIL 2004
PROJECT NO.	01716
REV. NO.	
1. ISSUED FOR 50% REVIEW	FEBRUARY 6, 2004
2. ISSUED FOR 70% REVIEW	MARCH 5, 2004
3. ISSUED FOR PRETENDER REVIEW	APRIL 2004
4. ISSUED FOR TENDER	MAY 14, 2004



SERVER ROOM (PO-PW-17)
SCALE 1/50

- NOTES:
- 10' R/W COMPLETE WITH HEAT TRACE CABLE FOR 10' LENGTH OF PPE. HEAT TRACE IS INSTALLED ON PPE EXTERIOR.
 - 120V CIRCUIT FOR MOTORIZED PROJECTOR SCREEN. WIRE AND CONNECT AS REQUIRED.
 - 120V CIRCUIT FOR CEILING MOUNTED PROJECTOR. CEILING MOUNTED OUTLET BOX C/W FACEPLATE. N* EMT DOWN TO WALL MOUNTED OUTLET BOX. PROVIDE FACEPLATES C/W 1/2" BUSHED HOLE AND PULLSTRIP.
 - THERMOSTAT DOWN TO FC-10 IN CRAWLSPACE.
 - HUMIDIFIER MOUNTED IN CEILING SPACE ABOVE.
 - EXISTING POWER/DATA TO REMAIN.
 - EXISTING FAN F-26 TO REMAIN. RELOCATE SPEED CONTROLLER TO NEW LUNCH ROOM.
 - EXISTING POWER AND SYSTEMS TO REMAIN.
 - 120V CONNECTION TO CONTROL TRANSFORMER FOR MECHANICAL CONTROLS.
 - COORDINATE OUTLET LAYOUT WITH OWNER PRIOR TO ROUGH-IN.
 - RELOCATE 6-15A CIRCUITS TO NEW PANEL 3A (43-84) PROVIDE 100A-3P BREAKER, 4#3 TO SUB-FEED NEW PANEL 3A (43-84).
 - PRE-ACTION SPRINKLER SYSTEM PRESSURE SWITCH, SOUNDING AND COMPRESSOR. PROGRAM TO ACTIVATE SOUNDING IF BOTH SMOKE DETECTORS IN ROOM GEN-PW-12 OR ROOM PO-PW-17 ACTIVATE OR IF THE MANUAL STATION IN ROOM GEN-PW-12 OR ROOM PO-PW-17 IS PULLED.

FOR CONTINUATION, REFER TO DRAWING E2.6

FOR CONTINUATION, REFER TO DRAWING E2.8

PART MAIN FLOOR PLAN - PART B POWER AND SYSTEMS
SCALE 1/100

SMS ENGINEERING
SMS Engineering Ltd. Consulting Engineers
770 Buxton Street Winnipeg, MB Canada R3B 0G3
Telephone: 204.773.0301 Fax: 204.772.0100
smseng.com

02-018-01

ORIGINAL CONTRACT DRAWING
REVISED AND SEALED BY
ANDY LOHRE, P.ENG.
MAY 13, 2004

APCM
Certificate of Authorization
SMS Engineering Ltd.
No. 956 Expiry April 30, 2005

Drawings and specifications, as instruments of service are the property of the architect, the copyright in same being reserved to him. No reproduction or other use without the permission of the architect and where made, must bear his name. All prints to be returned to the architect.
The contractor shall verify dimensions and data noted herein with conditions on the site and is held responsible for reporting any discrepancy to the architect for adjustment.
This drawing shall not be used for building purposes and counterigned by:

THE CITY OF WINNIPEG

OFFICE ADDITION AND RENOVATION
1155 PACIFIC AVENUE
WINNIPEG, MANITOBA

FRIESEN TOKAR ARCHITECTS

MAIN FLOOR PLAN
PART B
POWER AND SYSTEMS

E2.7