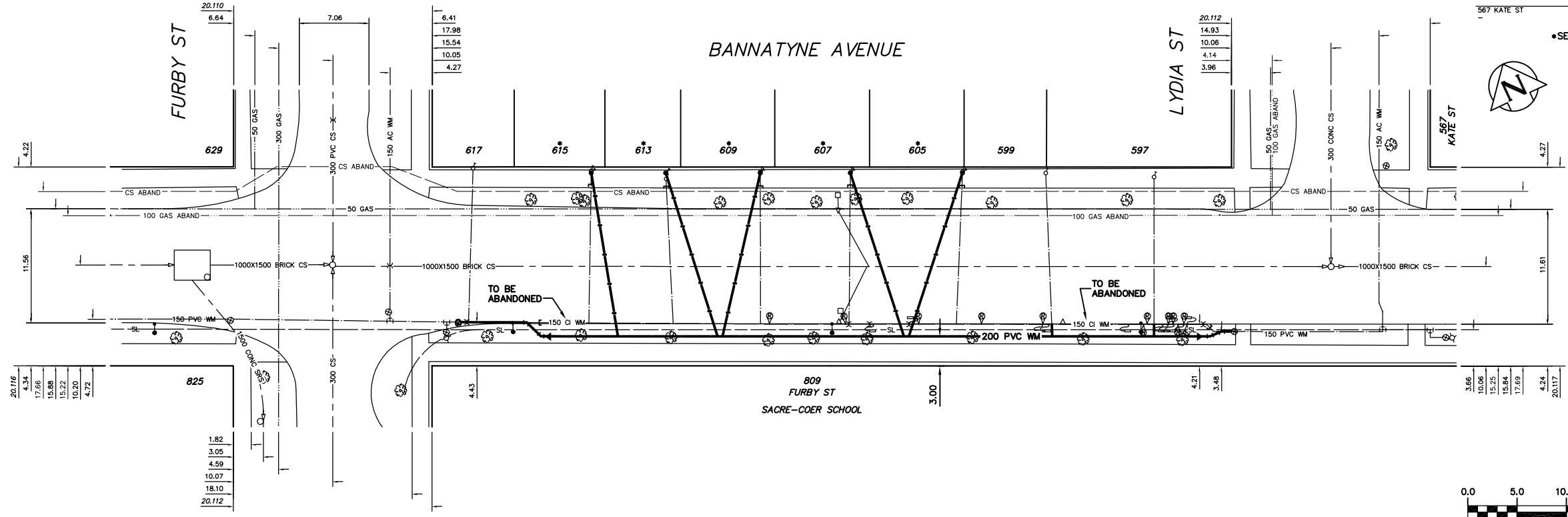


NOTE: CHAINAGES SHOWN ARE ALONG N R OF BANNATYNE AVE.

ADDRESS	SIZE(mm) & TYPE (STREET)	SIZE(mm) & TYPE (PROP)	SHORT & LONG MEASUREMENT	CORP LOCATION	REMARKS
597 BANNATYNE AVE	19 COPPER	19 COPPER	1.22 W EL HOUSE	OPP S/C	-
RESIDENTIAL			8.38 W WL LYDIA		
599 BANNATYNE AVE	19 COPPER	15 COPPER	1.83 E WL HOUSE	0.61 E S/C	-
RESIDENTIAL			18.90 W WL LYDIA		
605 BANNATYNE AVE	13 LEAD	13 LEAD	1.22 E EL HOUSE	0.61 W S/C	CHANGE NEW MAIN/39...97/04/04 RENEWAL STR TAP
RESIDENTIAL			38.71 W WL LYDIA		
607 BANNATYNE AVE	13 LEAD	19 COPPER	38.4 W WL LYDIA		CHANGE NEW MAIN/39
RESIDENTIAL			27.43 W WL LYDIA		
608 BANNATYNE AVE	13 LEAD	13 LEAD	0.91 W EL HOUSE	33.22 E EL FURBY	CHANGE NEW MAIN/39
RESIDENTIAL			34.14 E EL FURBY		
613 BANNATYNE AVE	13 LEAD	13 LEAD	24.08 E EL FURBY	24.38 E EL FURBY	CHANGE NEW MAIN/39
RESIDENTIAL			16.15 E EL FURBY		
615 BANNATYNE AVE	13 LEAD	13 LEAD	0.3 W EL HOUSE	15.85 E EL FURBY	CHANGE NEW MAIN/39
RESIDENTIAL			4.27 E EL FURBY		
617 BANNATYNE AVE	19 COPPER	19 COPPER	3.05 W EL HOUSE	0.46 W S/C	MULT MTRG W/JUNT B
RESIDENTIAL			4.27 E EL FURBY		
629 BANNATYNE AVE	19 COPPER	19 COPPER	0.91 W WL HOUSE	OPP S/C	FAMILY DRG/633 NOW SINGLE SERV. REVERSE TAP OVER MAIN SERVICED OFF MICROPILOT
RESIDENTIAL			13.41 W WL FURBY		
809 FURBY ST	150 ASBESTOS	100 ASBESTOS	2.6 W WL LYDIA	OPP VALVE	SEE DWG MC-1290 FOR DETAILS
COMMERCIAL			2.6 W WL LYDIA		
825 SHERBROOK ST	150 ASBESTOS	150 POLY V	25.3 E WL BUILDING	OPP S/C	88.5' W 73.5' EEL BANNATYNE
COMMERCIAL			27.58 E EL SHERBROOK		NOV/10/02 NEW SPRING SERV CITY SIDE
567 KATE ST	-	-	-	-	NO INFORMATION AVAILABLE

- *SERVICES TO BE RENEWED TO R ALL OTHERS TO BE RECONNECTED
- CONSTRUCTION NOTES**
1. EXPOSE EXISTING WATERMAIN & CONFIRM INVERTS PRIOR TO CONSTRUCTION.
 2. LOCATION OF ALL SERVICES TO BE CONFIRMED IN THE FIELD.
 3. INSTALL WATERMAIN BY TRENCHLESS METHODS.
 4. TRENCHES AND EXCAVATIONS WITHIN 1 METRE OF A PAVED AREA INCLUDING SIDEWALKS SHALL BE CLASS 3 BACKFILL.
 5. ALL MATERIALS SHALL CONFORM TO THE CITY OF WINNIPEG STANDARD CONSTRUCTION SPECIFICATIONS.
 6. MINIMUM COVER TO TOP OF WATERMAIN SHALL BE 2.4 m.
 7. REPLACE ALL EXISTING LEAD SERVICES FROM PROPOSED WATERMAIN TO R.
 8. NOTIFY ALL AFFECTED RESIDENTS AND BUSINESSES 24 HOURS IN ADVANCE OF ANY WATER SHUTDOWNS OR DISRUPTION OF SERVICE.



METRIC
WHOLE NUMBERS INDICATE MILLIMETRES
DECIMALIZED NUMBERS INDICATE METRES

NOTE: ALL VALVES TO BE INSTALLED COUNTERCLOCKWISE TO CLOSE

WARNING

IF POWER EQUIPMENT OR EXPLOSIVES ARE TO BE USED FOR EXCAVATION ON THIS PROJECT THE CONTRACTOR MUST:

- 1) NOTIFY THE GAS COMPANY OF THE PROPOSED LOCATION OF EXCAVATION.
- 2) TAKE PRECAUTION TO AVOID DAMAGE TO GAS COMPANY INSTALLATIONS.

SEE PROVINCIAL REGULATION 210/72 FOR DETAILS

200 WM	WATERMAIN	200 WM	SL, HYDRO	150 WM	WATERMAIN	150 WM
⊕	HYDRANT	⊕	MTS	+	HYDRANT	+
⊙	VALVE	⊙	TRAFFIC SIGNALS	X	VALVE	X
525 LDS	LAND DRAINAGE SEWER	525 LDS	GAS	50 GAS	LAND DRAINAGE SEWER	300 LDS
375 WWS	WASTEWATER SEWER	375 WWS	SURVEY BAR	250 WWS	WASTEWATER SEWER	250 WWS
○	MANHOLE	●	FENCE	X	PROFILE	
□	CATCH BASIN	■	POLE - HYDRO, MTS	---	GROUND ABOVE PIPE	
▽	CURB INLET	▽	CURB STOP	⊙		
△	REDUCER	△	GUY ANCHOR	⊙		
X	COUPLING	X	LIGHT STANDARD			
⊕	ANODE	⊕	TREE			
EXISTING	LEGEND-PLAN	PROPOSED	EXISTING	LEGEND-PLAN	PROPOSED	EXISTING
				LEGEND-PROFILE	PROPOSED	

LOCATION APPROVED UNDERGROUND STRUCTURES	SUPV. U/G STRUCTURES COMMITTEE	DATE
NOTE:	LOCATION OF UNDERGROUND STRUCTURES AS SHOWN ARE BASED ON THE BEST INFORMATION AVAILABLE BUT NO GUARANTEE IS GIVEN THAT ALL EXISTING UTILITIES ARE SHOWN OR THAT THE GIVEN LOCATIONS ARE EXACT. CONFIRMATION OF EXISTENCE AND EXACT LOCATION OF ALL SERVICES MUST BE OBTAINED FROM THE INDIVIDUAL UTILITIES BEFORE PROCEEDING WITH CONSTRUCTION.	
B.M. ELEV.	FIELD BOOK #:	
POSTED TO LBS:		
DESIGNED BY DS/CJH	CHECKED BY TW	
DRAWN BY RWK/CJH	APPROVED BY KZ	
HOR. SCALE 1:250	RELEASED FOR CONSTRUCTION	
VERTICAL 1:50		
NO. REVISIONS	DATE	BY
	DATE	DATE

CITY OF WINNIPEG
WATER AND WASTE
ENGINEERING DIVISION

DESIGNED BY DS/CJH
CHECKED BY TW

DRAWN BY RWK/CJH
APPROVED BY KZ

HOR. SCALE 1:250
VERTICAL 1:50

DATE 2004 04 07

ENGINEER'S SEAL

ORIGINAL SIGNED BY K.R. ZUREK
04/04/19

BID OPPORTUNITY: 151-2004
FILENAME: D-8451.dwg
PLOT DATE: 2004 04 20

THE CITY OF WINNIPEG
WATER AND WASTE DEPARTMENT

2004 WATERMAIN RENEWALS

BANNATYNE AVENUE
FURBY STREET TO LYDIA STREET

SHEET 1 OF 10
CITY DRAWING NUMBER
D-8451