

NOTE: CHAINAGES SHOWN ARE ALONG W. R OF DAVID ST.



WATER SERVICE INFORMATION

ADDRESS	SIZE(mm) & TYPE (STREET)	SIZE(mm) & TYPE (PROP)	SHORT & LONG MEASUREMENT	CORP. LOCATION	REMARKS
627 DAVID ST	-	-	2.13 N OF S	OPP S/C	-
RESIDENTIAL	-	-	-	-	-
631 DAVID ST	-	-	2.44 S OF N	35.36 S 3RD HYD	-
RESIDENTIAL	-	-	-	-	-
635 DAVID ST	19	19	5.5 S NBL	0.6 S OF S/C	-
RESIDENTIAL	COPPER	COPPER	23.5 S 3RD HYD N PORT.	-	-
637 DAVID ST	19	19	4.88 SBL BLDG	0.6 S OF S/C	-
RESIDENTIAL	COPPER	COPPER	23.01 S 3RD HYD N PORT.	-	-
639 DAVID ST	19	19	5.4 NSL BLDG	0.3 S OF S/C	SERV. REPAIR APR/83
RESIDENTIAL	COPPER	COPPER	8.4 S 3RD HYD N PORT.	-	-
641 DAVID ST	19	19	6.7 NSL BLDG	0.3 S OF S/C	SERV. REPAIR APR/83
RESIDENTIAL	COPPER	COPPER	7.8 S 3RD HYD N PORT.	-	-

*SERVICES TO BE RENEWED TO R ALL OTHERS TO BE RECONNECTED

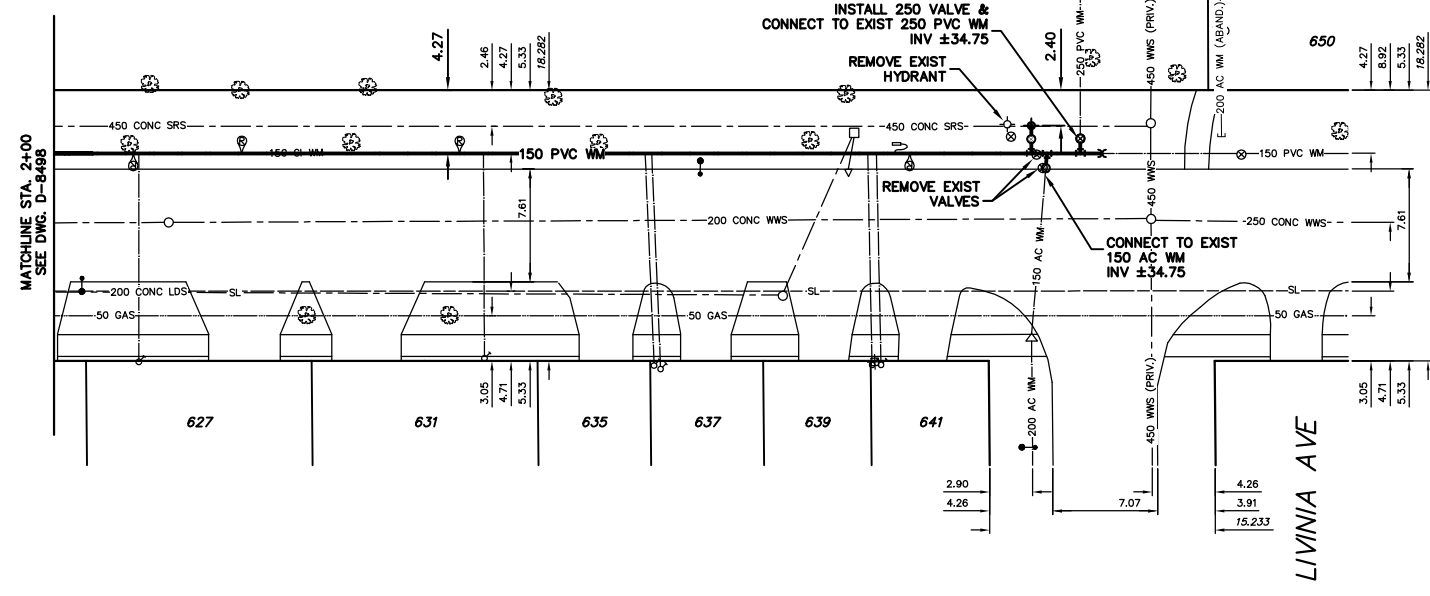
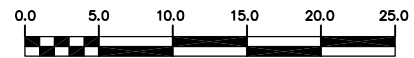
- CONSTRUCTION NOTES**
1. EXPOSE EXISTING WATERMAIN & CONFIRM INVERTS PRIOR TO CONSTRUCTION.
 2. LOCATION OF ALL SERVICES TO BE CONFIRMED IN THE FIELD.
 3. INSTALL WATERMAIN BY TRENCHLESS METHODS.
 4. TRENCHES AND EXCAVATIONS WITHIN 1 METRE OF A PAVED AREA INCLUDING SIDEWALKS SHALL BE CLASS 3 BACKFILL.
 5. ALL MATERIALS SHALL CONFORM TO THE CITY OF WINNIPEG STANDARD CONSTRUCTION SPECIFICATIONS.
 6. MINIMUM COVER TO TOP OF WATERMAIN SHALL BE 2.4 m.
 7. REPLACE ALL EXISTING LEAD SERVICES FROM PROPOSED WATERMAIN TO R.
 8. NOTIFY ALL AFFECTED RESIDENTS AND BUSINESSES 24 HOURS IN ADVANCE OF ANY WATER SHUTDOWNS OR DISRUPTION OF SERVICE.

METRIC
WHOLE NUMBERS INDICATE MILLIMETRES
DECIMALIZED NUMBERS INDICATE METRES

NOTE: ALL VALVES TO BE INSTALLED COUNTERCLOCKWISE TO CLOSE

WARNING

IF POWER EQUIPMENT OR EXPLOSIVES ARE TO BE USED FOR EXCAVATION ON THIS PROJECT THE CONTRACTOR MUST:
1) NOTIFY THE GAS COMPANY OF THE PROPOSED LOCATION OF EXCAVATION.
2) TAKE PRECAUTION TO AVOID DAMAGE TO GAS COMPANY INSTALLATIONS.
SEE PROVINCIAL REGULATION 210/72 FOR DETAILS



200 WM	WATERMAIN	200 WM	SL, HYDRO	150 WM	WATERMAIN	150 WM
⊕	HYDRANT	⊕	MTS	⊕	HYDRANT	⊕
⊙	VALVE	⊙	TRAFFIC SIGNALS	⊙	VALVE	⊙
525 LDS	LAND DRAINAGE SEWER	525 LDS	GAS	50 GAS	300 LDS	LAND DRAINAGE SEWER
375 WWS	WASTEWATER SEWER	375 WWS	SURVEY BAR	250 WWS	WASTEWATER SEWER	250 WWS
○	MANHOLE	○	FENCE	⊗	PROFILE	
□	CATCH BASIN	□	POLE - HYDRO, MTS	—	GROUND ABOVE PIPE	
▽	CURB INLET	▽	CURB STOP	◊		
△	REDUCER	△	GUY ANCHOR			
⊗	COUPLING	⊗	LIGHT STANDARD			
⊕	ANODE	⊕	TREE			
EXISTING	LEGEND-PLAN	PROPOSED	EXISTING	LEGEND-PLAN	PROPOSED	EXISTING
				LEGEND-PROFILE	PROPOSED	

LOCATION APPROVED UNDERGROUND STRUCTURES

SUPV. U/O STRUCTURES COMMITTEE DATE

NOTE:
LOCATION OF UNDERGROUND STRUCTURES AS SHOWN ARE BASED ON THE BEST INFORMATION AVAILABLE BUT NO GUARANTEE IS GIVEN THAT ALL EXISTING UTILITIES ARE SHOWN OR THAT THE GIVEN LOCATIONS ARE EXACT. CONFIRMATION OF EXISTENCE AND EXACT LOCATION OF ALL SERVICES MUST BE OBTAINED FROM THE INDIVIDUAL UTILITIES BEFORE PROCEEDING WITH CONSTRUCTION.

NO.	REVISIONS	DATE	BY

CITY OF WINNIPEG WATER AND WASTE ENGINEERING DIVISION

DESIGNED BY: DS/CJH
CHECKED BY: TW

DRAWN BY: CJH
APPROVED BY: KZ

HOR. SCALE: 1:250
VERTICAL: 1:50

DATE: 2004 05 19

ENGINEER'S SEAL

ORIGINAL SIGNED BY K.R. ZUREK 04/05/19

THE CITY OF WINNIPEG WATER AND WASTE DEPARTMENT

2004 WATERMAIN RENEWALS

DAVID STREET
100 m N OF PORTAGE AVENUE TO LIVINIA AVENUE

SHEET 12 OF 13
CITY DRAWING NUMBER: D-8499

BID OPPORTUNITY: 152-2004
FILENAME: D-8498_D-8499.dwg
PLOT DATE: 2004 05 19