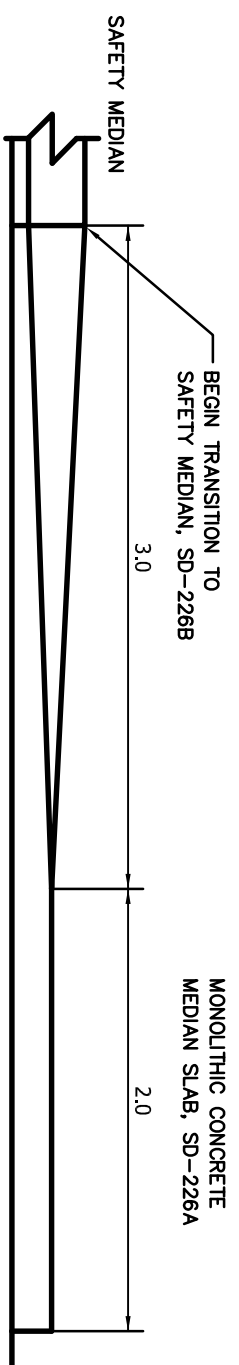
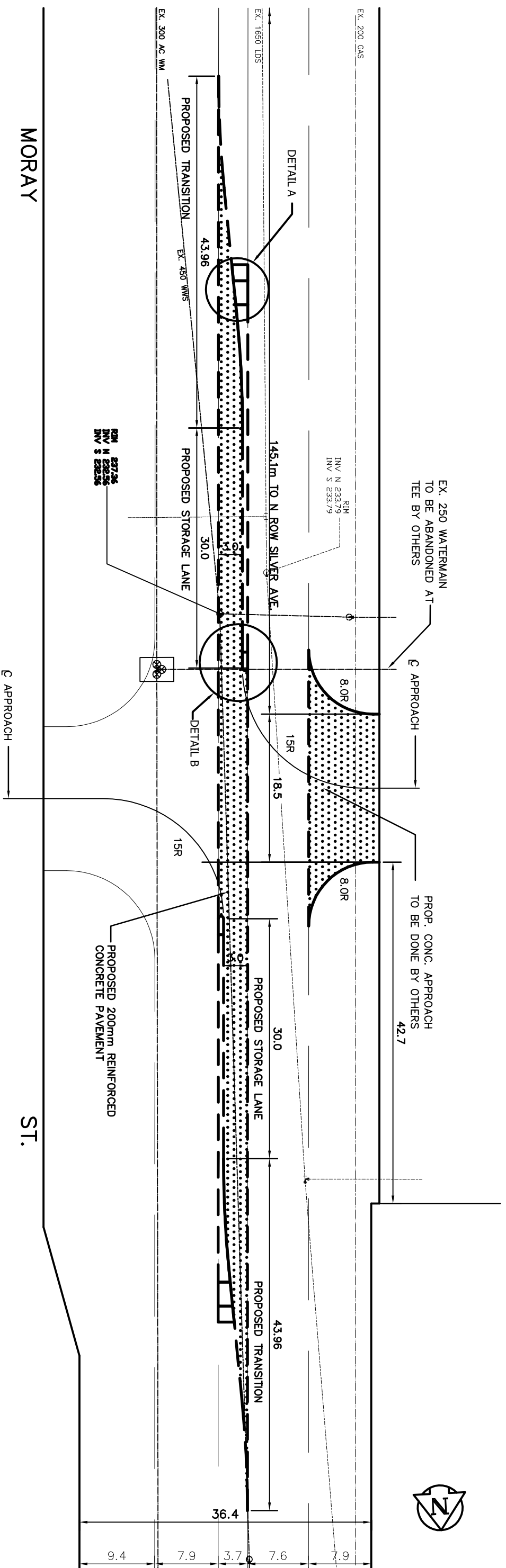


DETAIL "A"  
N.T.S.



DETAIL "B"  
N.T.S.



MACDON INDUSTRIES  
#680 MORAY ST.

<b>SEG ENGINEERING INC.</b> 200 TIGER AVENUE WINNIPEG, MANITOBA (204) 253-2118		ENGINEER <b>E.P. RIVALIN</b> CONSULTANT DRAWING NO. 089-037-01	
DESIGNED BY: S.C., NM (COW) DRAWN BY: S.C., FW (COW) HOR. SCALE: 1:500 VERT. SCALE: N/A DATE: FEBRUARY 2004	CHECKED BY: E.P.R. APPROVED BY: E.P.R. RELEASED FOR CONSTRUCTION:	<b>THE CITY OF WINNIPEG</b> PUBLIC WORKS DEPARTMENT TRANSPORTATION DIVISION 2004 INTERSECTION IMPROVEMENTS MORAY STREET NORTH OF SILVER AVENUE NORTH BOUND AND SOUTH BOUND LEFT TURN STORAGE LANES	
CITY DRAWING NO. A-9827 PRIVATE APPROACH APPROVAL D-9827		154-2004	