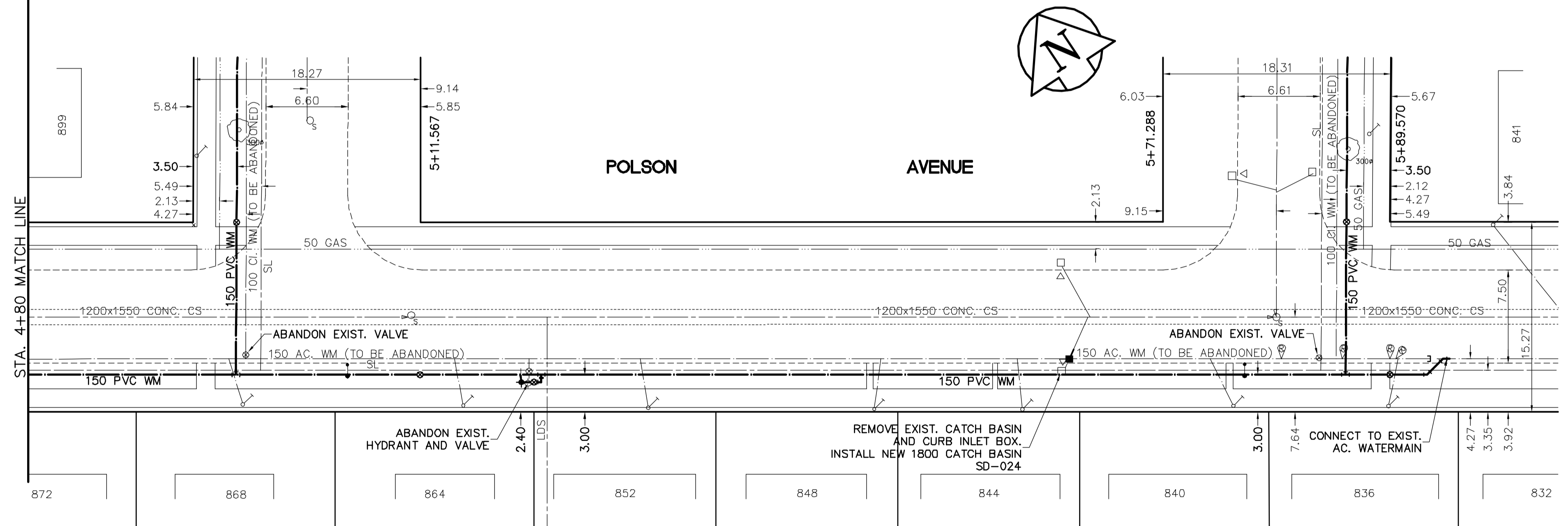
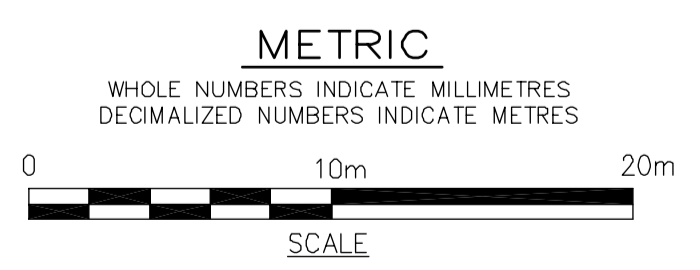


- CONSTRUCTION NOTES**
1. EXPOSE WATERMAIN CONNECTIONS AND CONFIRM INVERTS PRIOR TO CONSTRUCTION.
  2. INSTALL WATERMAIN BY TRENCHLESS METHODS.
  3. ALL MATERIALS SHALL CONFORM TO THE CITY OF WINNIPEG STANDARD CONSTRUCTION SPECIFICATIONS.
  4. MINIMUM COVER TO TOP OF PROPOSED WATERMAIN SHALL BE 2.5m FROM STREET CENTERLINE.
  5. INSTALL ALL HYDRANTS WITH FLANGE ELEVATION 50mm - 150mm ABOVE FINISHED GRADE.
  6. REPLACE ALL EXISTING LEAD SERVICES FROM THE PROPOSED WATERMAIN TO PROPERTY LINE.
  7. NOTIFY ALL AFFECTED RESIDENTS AND BUSINESSES 24 HOURS IN ADVANCE OF ANY WATER SHUTDOWN OR DISRUPTION OF SERVICE.
  8. LOCATION OF PREVIOUS WATERMAIN BREAKS SHOWN THUS IS APPROXIMATE AND FOR INFORMATION ONLY. NO GUARANTEE IS GIVEN TO THE COMPLETENESS OR ACCURACY OF THIS INFORMATION.
  9. LOCATION OF WATER SERVICES SHOWN ON DRAWINGS ARE APPROXIMATE. THE CONTRACTOR SHALL FIELD LOCATE ALL WATER SERVICES PRIOR TO CONSTRUCTION.
  10. ALL VALVES SHALL BE RED TOP (COUNTER CLOCKWISE TO CLOSE).
  11. BACKFILL UNDER OR WITHIN 1.0m OF PAVEMENTS, INCLUDING SIDEWALKS SHALL BE CLASS 3 BACKFILL EXCEPT AS NOTED. BACKFILL IN BOULEVARDS SHALL BE CLASS 5 BACKFILL.



ADDRESS/NATURE OF SERVICES	SIZE/MATERIAL	DIST. TO PROP.	POSITION OF S.C. (curb stop)	POSITION OF C.C. (corp)	COMMENTS:
836 POLSON AV	COPPER	0.5 m	Long: 31.7 m W of 2ND HYD E of AIRLIES	Long:	
RESIDENTIAL	19 mm		Short: 4.1 m W of EL HOUSE	Short: OPP of SC	
840 POLSON AV	COPPER	0.5 m	Long: 45.0 m W of 2ND HYD E of AIRLIES	Long:	
RESIDENTIAL	19 mm		Short: 1.4 m W of EL HOUSE	Short: 1.8 m W of SC	
844 POLSON AV	COPPER	0.3 m	Long: 39.9 m E of 1ST HYD E of AIRLIES	Long:	
RESIDENTIAL	19 mm		Short: 3.2 m W of EL HOUSE	Short: 0.3 m W of SC	
848 POLSON AV	COPPER	0.5 m	Long: 28.0 m E of 1ST HYD E of AIRLIES	Long:	
RESIDENTIAL	19 mm		Short: 0.5 m E of EL HOUSE	Short: 0.6 m E of SC	
852 POLSON AV	COPPER	0.3 m	Long: 9.6 m E of 1ST HYD E of AIRLIES	Long:	
RESIDENTIAL	19 mm		Short: 4.1 m W of EL HOUSE	Short: 0.3 m W of SC	
864 POLSON AV	COPPER	0.5 m	Long: 95.1 m E of EL AIRLIES	Long:	
RESIDENTIAL	19 mm		Short: 2.7 m W of EL HOUSE	Short: 0.9 m W of SC	
868 POLSON AV	COPPER	0.5 m	Long: 76.7 m E of EL AIRLIES	Long:	
RESIDENTIAL	19 mm		Short: 2.9 m W of EL HOUSE	Short: 0.6 m W of SC	



150 mm W.M.	150 mm W.M.	150 mm W.M.	150 mm W.M.	150 mm W.M.	150 mm W.M.	150 mm W.M.	150 mm W.M.	150 mm W.M.	150 mm W.M.
WATERMAIN	WATERMAIN	WATERMAIN	WATERMAIN	WATERMAIN	WATERMAIN	WATERMAIN	WATERMAIN	WATERMAIN	WATERMAIN
HYDRANT	HYDRANT	HYDRANT	HYDRANT	HYDRANT	HYDRANT	HYDRANT	HYDRANT	HYDRANT	HYDRANT
VALVE	VALVE	VALVE	VALVE	VALVE	VALVE	VALVE	VALVE	VALVE	VALVE
300mm L.D.S.	300mm L.D.S.	300mm L.D.S.	300mm L.D.S.	300mm L.D.S.	300mm L.D.S.	300mm L.D.S.	300mm L.D.S.	300mm L.D.S.	300mm L.D.S.
250mm W.W.S.	250mm W.W.S.	250mm W.W.S.	250mm W.W.S.	250mm W.W.S.	250mm W.W.S.	250mm W.W.S.	250mm W.W.S.	250mm W.W.S.	250mm W.W.S.
LAND DRAINAGE SEWER	LAND DRAINAGE SEWER	LAND DRAINAGE SEWER	LAND DRAINAGE SEWER	LAND DRAINAGE SEWER	LAND DRAINAGE SEWER	LAND DRAINAGE SEWER	LAND DRAINAGE SEWER	LAND DRAINAGE SEWER	LAND DRAINAGE SEWER
MANHOLE	MANHOLE	MANHOLE	MANHOLE	MANHOLE	MANHOLE	MANHOLE	MANHOLE	MANHOLE	MANHOLE
CATCH BASIN	CATCH BASIN	CATCH BASIN	CATCH BASIN	CATCH BASIN	CATCH BASIN	CATCH BASIN	CATCH BASIN	CATCH BASIN	CATCH BASIN
CURB INLET	CURB INLET	CURB INLET	CURB INLET	CURB INLET	CURB INLET	CURB INLET	CURB INLET	CURB INLET	CURB INLET
JUNCTIONS	JUNCTIONS	JUNCTIONS	JUNCTIONS	JUNCTIONS	JUNCTIONS	JUNCTIONS	JUNCTIONS	JUNCTIONS	JUNCTIONS
CULVERT	CULVERT	CULVERT	CULVERT	CULVERT	CULVERT	CULVERT	CULVERT	CULVERT	CULVERT
GAS	GAS	GAS	GAS	GAS	GAS	GAS	GAS	GAS	GAS
EXISTING	LEGEND - PLAN	PROPOSED	EXISTING	LEGEND - PLAN	PROPOSED	EXISTING	LEGEND - PROFILE	PROPOSED	EXISTING

**LOCATION APPROVED UNDERGROUND STRUCTURES**

SUPV. U/G STRUCTURES DATE COMMITTEE

**NOTE:**  
LOCATION OF UNDERGROUND STRUCTURES AS SHOWN ARE BASED ON THE BEST INFORMATION AVAILABLE. BUT NO GUARANTEE IS GIVEN THAT ALL EXISTING UTILITIES ARE SHOWN OR THAT THE GIVEN LOCATIONS ARE EXACT. CONFIRMATION OF EXISTENCE AND EXACT LOCATION OF ALL SERVICES MUST BE OBTAINED FROM THE INDIVIDUAL UTILITIES BEFORE PROCEEDING WITH CONSTRUCTION.

B.M.	25-001	BOLT IN 4.6m CONC. PILE, 0.3m N. OF N. LINE OF INKSTER BLVD. & 2.4m E. OF W. LINE OF AIRLIES ST.	ELEV.	231.460
NO.	ISSUED FOR TENDER	2004/4/27	GSK	
NO.	REVISIONS	DATE	BY	

**EARTH TECH**

atyc INTERNATIONAL LTD. COMPANY  
Earth Tech (Canada) Inc. Winnipeg, Manitoba 204.477.5381

DESIGNED BY: GSK CHECKED BY: GSK  
DRAWN BY: GDL APPROVED BY: [Signature]  
HOR. SCALE: 1:250 VERTICAL SCALE: 1:50  
RELEASED FOR CONSTRUCTION BY: K.R. ZUREK  
DATE: 2004/03/01 DATE: APRIL 27, 2004

ENGINEER'S SEAL

ORIGINAL SIGNED BY: J. E. HUTCHISON 2004/04/27

CONSULTANT DRAWING NO. 76531-C04

**THE CITY OF WINNIPEG**  
Winnipeg WATER AND WASTE DEPARTMENT

**WATERMAIN RENEWALS CONTRACT No. 5**

SHEET 4 OF 19

CITY DRAWING NUMBER: **D-8529**

POLSON AVENUE  
RADFORD STREET TO 175m EAST OF AIRLIES  
STATION 4+80 TO STATION 6+95