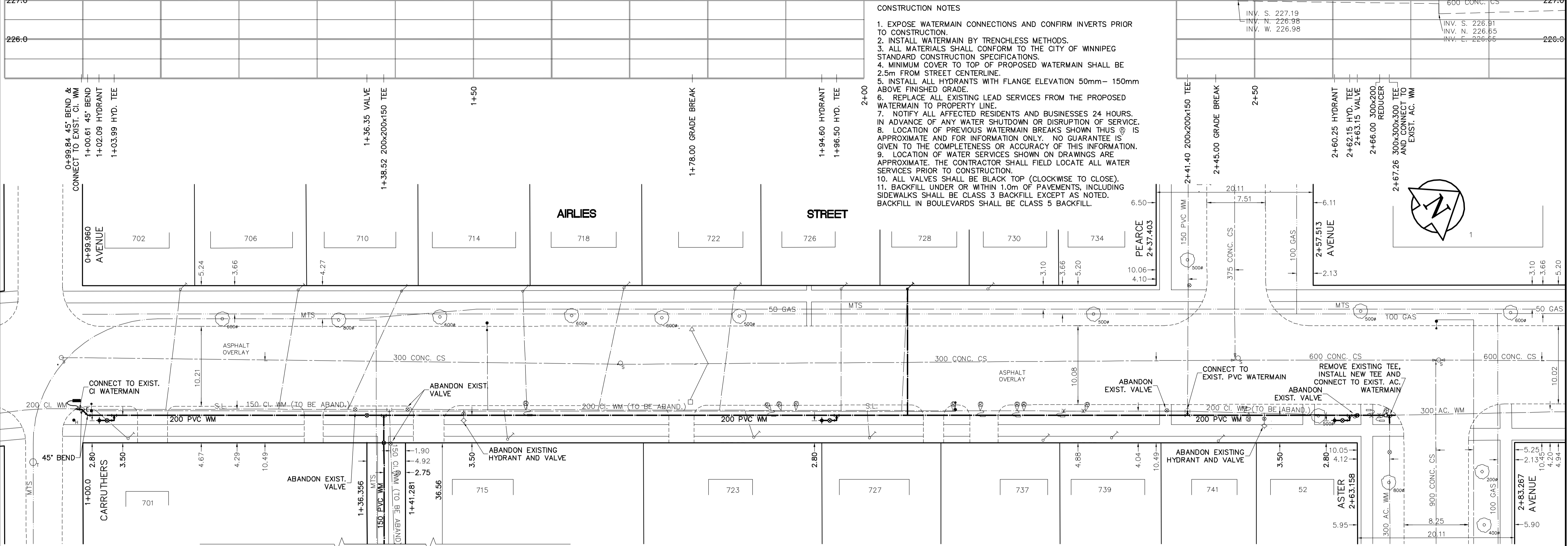
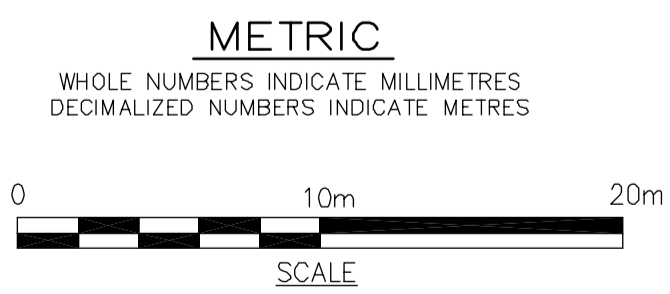


- CONSTRUCTION NOTES**
1. EXPOSE WATERMAIN CONNECTIONS AND CONFIRM INVERTS PRIOR TO CONSTRUCTION.
 2. INSTALL WATERMAIN BY TRENCHLESS METHODS.
 3. ALL MATERIALS SHALL CONFORM TO THE CITY OF WINNIPEG STANDARD CONSTRUCTION SPECIFICATIONS.
 4. MINIMUM COVER TO TOP OF PROPOSED WATERMAIN SHALL BE 2.5m FROM STREET CENTERLINE.
 5. INSTALL ALL HYDRANTS WITH FLANGE ELEVATION 50mm - 150mm ABOVE FINISHED GRADE.
 6. REPLACE ALL EXISTING LEAD SERVICES FROM THE PROPOSED WATERMAIN TO PROPERTY LINE.
 7. NOTIFY ALL AFFECTED RESIDENTS AND BUSINESSES 24 HOURS IN ADVANCE OF ANY WATER SHUTDOWN OR DISRUPTION OF SERVICE.
 8. LOCATION OF PREVIOUS WATERMAIN BREAKS SHOWN THUS IS APPROXIMATE AND FOR INFORMATION ONLY. NO GUARANTEE IS GIVEN TO THE COMPLETENESS OR ACCURACY OF THIS INFORMATION.
 9. LOCATION OF WATER SERVICES SHOWN ON DRAWINGS ARE APPROXIMATE. THE CONTRACTOR SHALL FIELD LOCATE ALL WATER SERVICES PRIOR TO CONSTRUCTION.
 10. ALL VALVES SHALL BE BLACK TOP (CLOCKWISE TO CLOSE).
 11. BACKFILL UNDER OR WITHIN 1.0m OF PAVEMENTS, INCLUDING SIDEWALKS SHALL BE CLASS 3 BACKFILL EXCEPT AS NOTED. BACKFILL IN BOULEVARDS SHALL BE CLASS 5 BACKFILL.



APEGM
 Certificate of Authorization
 Earth Tech Canada Inc.
 No. 730 Expiry: April 30, 2004



ADDRESS/NATURE OF SERVICES	SIZE/MATERIAL	DIST. TO PROP.	POSITION OF S.C. (curb stop)	POSITION OF C.C. (corp)	COMMENTS:
726 AIRLIES ST RESIDENTIAL	COPPER 19 mm		Long: 48.6 m N of 1ST HYDRANT N OF CARRUTHERS Short: 0.5 m N of NL HOUSE	Long: 0.6 m N of SC	
723 AIRLIES ST RESIDENTIAL	COPPER 19 mm	0.2 m	Long: 36.9 m N of 1ST HYDRANT N OF CARRUTHERS Short: 0.2 m S of NL HOUSE	Long: OPP of SC	
718 AIRLIES ST RESIDENTIAL	COPPER 19 mm	0.2 m	Long: 20.9 m N of 1ST HYDRANT N OF CARRUTHERS Short: 1.2 m N of NL HOUSE	Long: Short: 2.7 m S of SC	
715 AIRLIES ST RESIDENTIAL	COPPER 19 mm		Long: 5.5 m N of 1ST HYDRANT N OF CARRUTHERS Short: 0.9 m S of NL HOUSE	Long: Short: 0.6 m N of SC	
714 AIRLIES ST RESIDENTIAL	COPPER 19 mm		Long: Short: 0.6 m N of NL HOUSE	Long: Short: 0.2 m N of SC	4/01 REPLACED SERVICE BOX
710 AIRLIES ST RESIDENTIAL	COPPER 19 mm	0.2 m	Long: 7.9 m S of 1ST HYDRANT N OF CARRUTHERS Short: 0.3 m N of NL HOUSE	Long: Short: 5.9 m S of SC	REVERSE TAP
706 AIRLIES ST RESIDENTIAL	COPPER 19 mm		Long: 21.3 m S of HYDRANT of	Long: Short: 1.4 m S of SC	
702 AIRLIES ST RESIDENTIAL	COPPER 19 mm	0.2 m	Long: 11.6 m N of NL CARRUTHERS Short: 1.5 m N of NL HOUSE	Long: Short: 0.9 m S of SC	
701 AIRLIES ST RESIDENTIAL	COPPER 19 mm		Long: 5.2 m N of NL CARRUTHERS Short: 0.3 m N of SL GARAGE	Long: Short: 1.5 m W of SC	

ADDRESS/NATURE OF SERVICES	SIZE/MATERIAL	DIST. TO PROP.	POSITION OF S.C. (curb stop)	POSITION OF C.C. (corp)	COMMENTS:
1 PEARCE AV RESIDENTIAL	COPPER 19 mm	0.0 m	Long: 16.0 m W of WL AIRLIES Short: 3.3 m E of WL HOUSE	Long: Short: 2.7 m W of SC	CONN TO NEW W/MAIN AUG 1/90
941 CARRUTHERS AV RESIDENTIAL	COPPER 19 mm		Long: 37.2 m E of EL AIRLIES Short: 3.7 m E of WL HOUSE	Long: Short:	
741 AIRLIES ST RESIDENTIAL	COPPER 19 mm	0.5 m	Long: 13.1 m N of NL ASTER Short: 2.5 m N of NL HOUSE	Long: Short: OPP of SC	
739 AIRLIES ST RESIDENTIAL	COPPER 19 mm	0.3 m	Long: 31.7 m N of NL ASTER Short: 4.8 m S of NL HOUSE	Long: Short:	
737 AIRLIES ST RESIDENTIAL	COPPER 19 mm	0.8 m	Long: 40.5 m N of NL ASTER Short: 0.7 m S of NL HOUSE	Long: Short:	
734 AIRLIES ST RESIDENTIAL	COPPER 19 mm	0.1 m	Long: 18.0 m W of WL AIRLIES Short: 5.2 m E of WL HOUSE	Long: Short: 1.2 m W of SC	CONN TO NEW W/MAIN JULY 26/90
730 AIRLIES ST RESIDENTIAL	COPPER 19 mm		Long: 21.6 m S of SL PEARCE Short: 2.1 m N of SL HOUSE	Long: Short:	
728 AIRLIES ST RESIDENTIAL	COPPER 19 mm	0.3 m	Long: 32.6 m S of SL PEARCE Short: 2.1 m N of SL HOUSE	Long: Short: OPP of SC	FEB 05 LEFT RUN RENEW TO PROPERTY
727 AIRLIES ST RESIDENTIAL	COPPER 19 mm	0.5 m	Long: 51.7 m N of 1ST HYD. N OF CARRUTHERS Short: 3.4 m N of SL HOUSE	Long: Short: 0.9 m N of SC	

EXISTING	LEGEND - PLAN	PROPOSED	EXISTING	LEGEND - PLAN	PROPOSED	EXISTING	LEGEND - PROFILE	PROPOSED
150 mm W.M.	WATERMAIN	150 mm W.M.	HYDRO	TELEPHONE	150 mm W.M.	WATERMAIN	HYDRANT	VALVE
300mm L.O.S.	LAND DRAINAGE SEWER	300mm L.O.S.	CONCRETE	ASPHALT	300mm L.O.S.	LAND DRAINAGE SEWER	HYDRANT	VALVE
250mm W.W.S.	WASTEWATER SEWER	250mm W.W.S.	PROPERTY LINE	SURVEY BAR	250mm W.W.S.	WASTE WATER SEWER	VALVE	PROFILE
MANHOLE	CATCH BASIN	CURB INLET	JUNCTIONS	CULVERT	GAS			

LOCATION APPROVED UNDERGROUND STRUCTURES

SUPV. U/G STRUCTURES COMMITTEE DATE

NOTE:
 LOCATION OF UNDERGROUND STRUCTURES AS SHOWN ARE BASED ON THE BEST INFORMATION AVAILABLE, BUT NO GUARANTEE IS GIVEN THAT THE GIVEN LOCATIONS ARE EXACT. CONFIRMATION OF EXISTENCE AND EXACT LOCATION OF ALL SERVICES MUST BE OBTAINED FROM THE INDIVIDUAL UTILITIES BEFORE PROCEEDING WITH CONSTRUCTION.

B.M. 13-015 ELEV. 231.100 N.W. COR. POWERS ST & KINSURBY AVE. TBLT. IN W. CONC. FOUNDATION NO. 1010 POWERS ST. 0.5m S. & 0.1m BELOW BRICK S.E. CORNER

NO.	ISSUED FOR TENDER	DATE	BY
0	ISSUED FOR TENDER	2004/4/27	GSK

EARTH TECH
 atyco INTERNATIONAL LTD. COMPANY
 Earth Tech (Canada) Inc. Winnipeg, Manitoba 204.477.5381

DESIGNED BY GSK CHECKED BY GSK
 DRAWN BY GDL APPROVED BY K.R. ZUREK

HOR. SCALE: 1:250
 VERTICAL SCALE: 1:50

RELEASER FOR CONSTRUCTION BY: K.R. ZUREK
 DATE: APRIL 27, 2004

ENGINEER'S SEAL
 ORIGINAL SIGNED BY J. E. HUTCHISON 2004/04/27
 CONSULTANT DRAWING NO. 76531-C06

THE CITY OF WINNIPEG
 WATER AND WASTE DEPARTMENT

WATERMAIN RENEWALS
 CONTRACT No. 5

AIRLIES STREET
 CARRUTHERS AVENUE
 TO ASTER AVENUE

SHEET 6 OF 19
 CITY DRAWING NUMBER D-8531