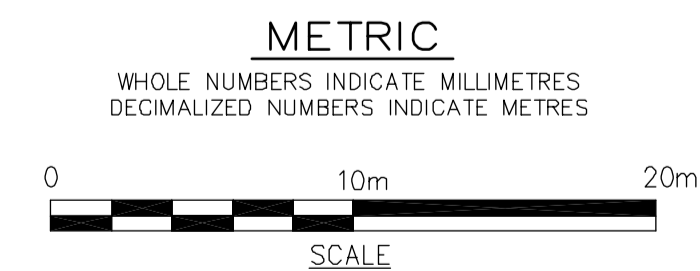
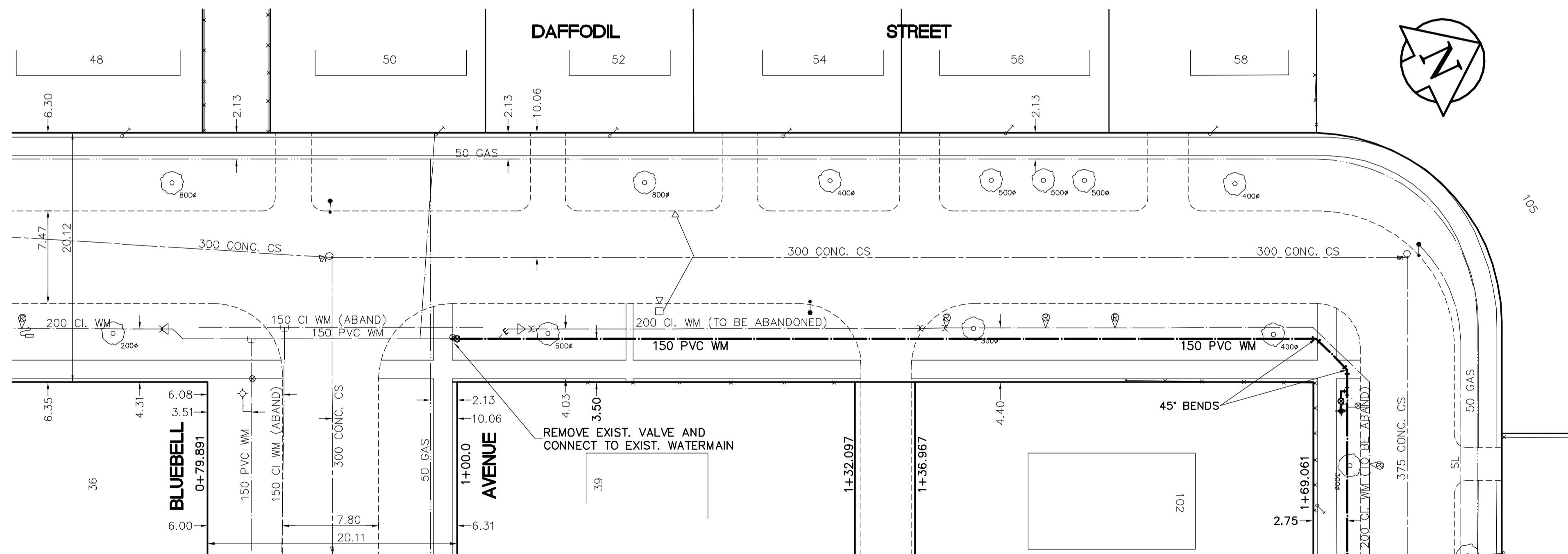


ADDRESS/ NATURE OF SERVICES	SIZE/ MATERIAL	DIST. TO PROP.	POSITION OF S.C. (curb stop)	POSITION OF C.C. (corp)	COMMENTS:
58 DAFFODIL ST RESIDENTIAL	COPPER 19 mm	0.2 m	Long: 8.1 m S of SL Short: 1.6 m N of SL	Long: TEAKWOOD Short: HOUSE	of of
56 DAFFODIL ST RESIDENTIAL	COPPER 19 mm	0.2 m	Long: 24.5 m S of SL Short: 5.4 m N of SL	Long: TEAKWOOD Short: HOUSE	of of
54 DAFFODIL ST RESIDENTIAL	COPPER 19 mm	0.3 m	Long: 26.4 m N of NL Short: 5.4 m N of SL	Long: BLUEBELL Short: HOUSE	of of
52 DAFFODIL ST RESIDENTIAL	COPPER 19 mm	0.3 m	Long: 12.2 m N of NL Short: 3.1 m N of SL	Long: BLUEBELL Short: HOUSE	of of
50 DAFFODIL ST RESIDENTIAL	COPPER 19 mm	0.2 m	Long: 1.8 m S of NL Short: 2.4 m S of SL	Long: BLUEBELL Short: HOUSE	of of SC

CONSTRUCTION NOTES

1. EXPOSE WATERMAIN CONNECTIONS AND CONFIRM INVERTS PRIOR TO CONSTRUCTION.
2. INSTALL WATERMAIN BY TRENCHLESS METHODS.
3. ALL MATERIALS SHALL CONFORM TO THE CITY OF WINNIPEG STANDARD CONSTRUCTION SPECIFICATIONS.
4. MINIMUM COVER TO TOP OF PROPOSED WATERMAIN SHALL BE 2.5m FROM STREET CENTERLINE.
5. INSTALL ALL HYDRANTS WITH FLANGE ELEVATION 50mm- 150mm ABOVE FINISHED GRADE.
6. REPLACE ALL EXISTING LEAD SERVICES FROM THE PROPOSED WATERMAIN TO PROPERTY LINE.
7. NOTIFY ALL AFFECTED RESIDENTS AND BUSINESSES 24 HOURS IN ADVANCE OF ANY WATER SHUTDOWN OR DISRUPTION OF SERVICE.
8. LOCATION OF PREVIOUS WATERMAIN BREAKS SHOWN THUS @ IS APPROXIMATE AND FOR INFORMATION ONLY. NO GUARANTEE IS GIVEN TO THE COMPLETENESS OR ACCURACY OF THIS INFORMATION.
9. LOCATION OF WATER SERVICES SHOWN ON DRAWINGS ARE APPROXIMATE. THE CONTRACTOR SHALL FIELD LOCATE ALL WATER SERVICES PRIOR TO CONSTRUCTION.
10. ALL VALVES SHALL BE BLACK TOP (CLOCKWISE TO CLOSE).
11. BACKFILL UNDER OR WITHIN 1.0m OF PAVEMENTS, INCLUDING SIDEWALKS SHALL BE CLASS 3 BACKFILL EXCEPT AS NOTED. BACKFILL IN BOULEVARDS SHALL BE CLASS 5 BACKFILL.



**APEGM**  
Certificate of Authorization  
Earth Tech Canada Inc.  
No. 730 Expiry: April 30, 2004

150 mm W.M.	WATERMAIN	150 mm W.M.	HYDRO	150 mm W.M.	WATERMAIN
⊕	HYDRANT	⊕	TELEPHONE	⊕	HYDRANT
⊙	VALVE	⊙	CONCRETE	⊙	VALVE
300mm L.D.S.	LAND DRAINAGE SEWER	300mm L.D.S.	ASPHALT	300mm L.D.S.	LAND DRAINAGE SEWER
250mm W.W.S.	WASTEWATER SEWER	250mm W.W.S.	PROPERTY LINE	250mm W.W.S.	WASTE WATER SEWER
○	MANHOLE	○	SURVEY BAR	○	⊕ PROFILE
□	CATCH BASIN	□	CURB STOP	⋄	
▽	CURB INLET	▽	TREE	⊕	
+	JUNCTIONS	+	ANODE	+	
—	CULVERT	—	CONCRETE SIDEWALK	—	
—	GAS	—	FENCE	—	

LOCATION APPROVED UNDERGROUND STRUCTURES

SUPV. U/G STRUCTURES DATE COMMITTEE

NOTE:  
LOCATION OF UNDERGROUND STRUCTURES AS SHOWN ARE BASED ON THE BEST INFORMATION AVAILABLE. BUT NO GUARANTEE IS GIVEN THAT ALL EXISTING UTILITIES ARE SHOWN OR THAT THE GIVEN LOCATIONS ARE EXACT. CONFIRMATION OF EXISTENCE AND EXACT LOCATION OF ALL SERVICES MUST BE OBTAINED FROM THE INDIVIDUAL UTILITIES BEFORE PROCEEDING WITH CONSTRUCTION.

B.M. 13-015 N.W. COR. POWERS ST & KINSBURY AVE. TBLT. IN ELEV. 231.100 W. CONC. FOUNDATION No. 1010 POWERS ST. 0.5m S. & 0.1m BELOW BRICK S.E. CORNER

DESIGNED BY	GSK	CHECKED BY	GSK
DRAWN BY	GDL	APPROVED BY	
HOR. SCALE:	1:250	RELEASED FOR CONSTRUCTION BY:	K.R. ZUREK
VERTICAL SCALE:	1:50	DATE	APRIL 27, 2004

**EARTH TECH**  
A TUCO INTERNATIONAL LTD. COMPANY  
Earth Tech (Canada) Inc. Winnipeg, Manitoba 204.477.5381

ENGINEER'S SEAL  
ORIGINAL SIGNED BY  
J. E. HUTCHISON  
2004/04/27

CONSULTANT DRAWING NO.  
76531-C07

**THE CITY OF WINNIPEG**  
Winnipeg WATER AND WASTE DEPARTMENT

**WATERMAIN RENEWALS**  
CONTRACT No. 5

DAFFODIL STREET  
BLUEBELL AVENUE TO  
TEAKWOOD AVENUE

SHEET 7 OF 19  
CITY DRAWING NUMBER  
D-8532