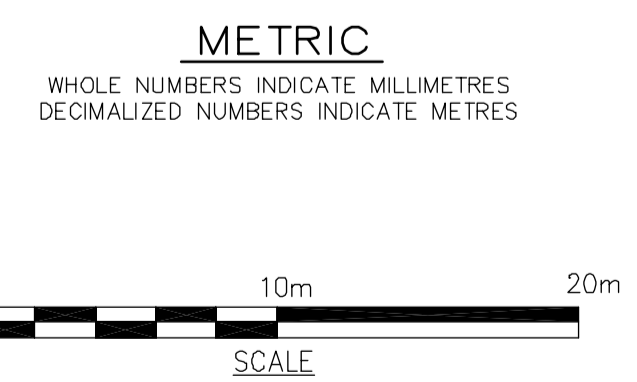
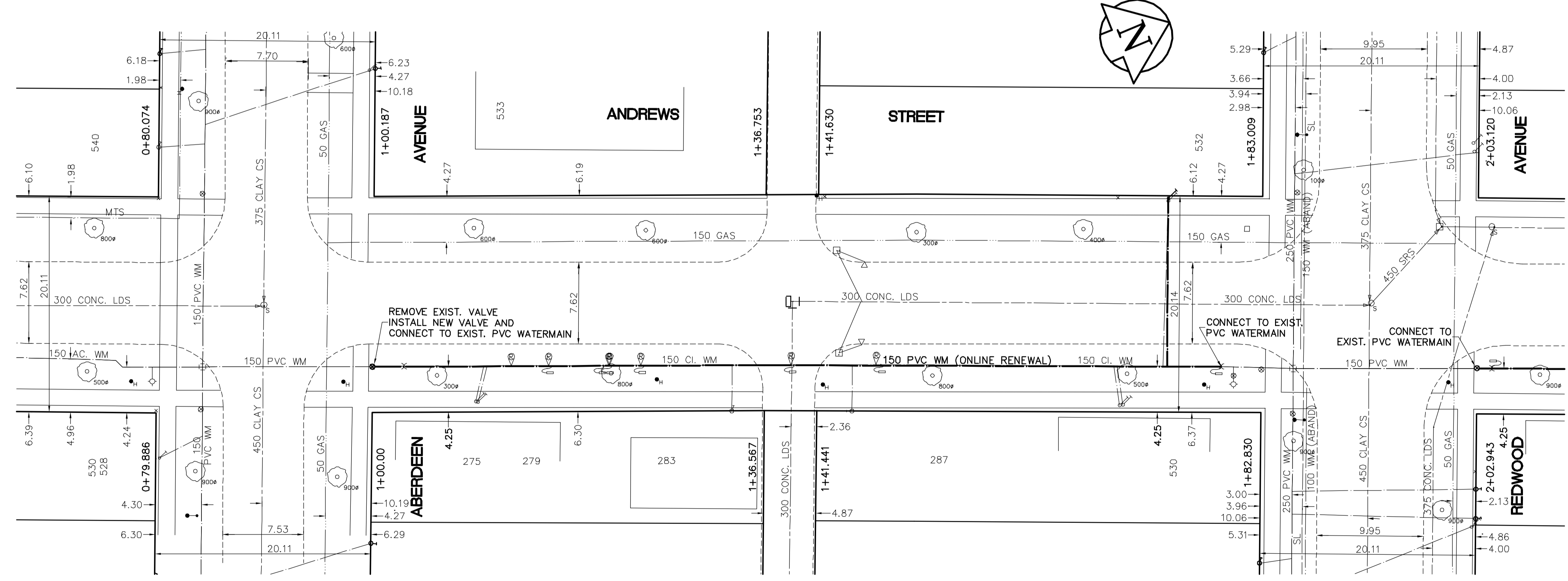


CONSTRUCTION NOTES

1. EXPOSE WATERMAIN CONNECTIONS AND CONFIRM INVERTS PRIOR TO CONSTRUCTION.
2. INSTALL WATERMAIN BY TRENCHLESS METHODS.
3. ALL MATERIALS SHALL CONFORM TO THE CITY OF WINNIPEG STANDARD CONSTRUCTION SPECIFICATIONS.
4. MINIMUM COVER TO TOP OF PROPOSED WATERMAIN SHALL BE 2.5m FROM STREET CENTERLINE.
5. INSTALL ALL HYDRANTS WITH FLANGE ELEVATION 50mm - 150mm ABOVE FINISHED GRADE.
6. REPLACE ALL EXISTING LEAD SERVICES FROM THE PROPOSED WATERMAIN TO PROPERTY LINE.
7. NOTIFY ALL AFFECTED RESIDENTS AND BUSINESSES 24 HOURS IN ADVANCE OF ANY WATER SHUTDOWN OR DISRUPTION OF SERVICE.
8. LOCATION OF PREVIOUS WATERMAIN BREAKS SHOWN THUS (X) IS APPROXIMATE AND FOR INFORMATION ONLY. NO GUARANTEE IS GIVEN TO THE COMPLETENESS OR ACCURACY OF THIS INFORMATION.
9. LOCATION OF WATER SERVICES SHOWN ON DRAWINGS ARE APPROXIMATE. THE CONTRACTOR SHALL FIELD LOCATE ALL WATER SERVICES PRIOR TO CONSTRUCTION.
10. ALL VALVES SHALL BE RED TOP (COUNTER CLOCKWISE TO CLOSE).
11. BACKFILL UNDER OR WITHIN 1.0m OF PAVEMENTS, INCLUDING SIDEWALKS SHALL BE CLASS 3 BACKFILL EXCEPT AS NOTED. BACKFILL IN BOULEVARDS SHALL BE CLASS 5 BACKFILL.

ADDRESS/RESIDENTIAL	SIZE/MATERIAL	DIST. TO PROP.	POSITION OF S.C. (curb stop)	POSITION OF C.C. (corp)	COMMENTS:
532 REDWOOD AV RESIDENTIAL	LEAD 13 mm	0.3 m	Long: 9.1 m S of SL REDWOOD Short: 8.8 m S of NL of BLDG.	Long: of Short: of SAME AS SC	RENEW TO PROPERTY
531 REDWOOD AV RESIDENTIAL	COPPER 19 mm	0.6 m	Long: 4.3 m W of WL ANDREWS Short: 4.3 m W of EL HOUSE	Long: of Short: 2.1 m E of SC	BRANCH SERV 533.
530 REDWOOD AV RESIDENTIAL	COPPER 19 mm	0.3 m	Long: 13.7 m S of SL REDWOOD Short: 3.4 m N of SL HOUSE	Long: of Short: OPP of SC	
530 REDWOOD AV RESIDENTIAL	COPPER 19 mm	0.3 m	Long: 13.4 m S of SL REDWOOD Short: 3.7 m N of SL HOUSE	Long: of Short: OPP of SC	
528A REDWOOD AV RESIDENTIAL	COPPER 19 mm	0.6 m	Long: 14.0 m E of EL ANDREWS Short: 0.4 m W of EL HOUSE	Long: of Short: 0.5 m W of SC	
528B REDWOOD AV RESIDENTIAL	COPPER 19 mm	0.2 m	Long: 17.7 m E of EL ANDREWS Short: 3.5 m E of WL HOUSE	Long: of Short: OPP of SC	
527 REDWOOD AV RESIDENTIAL	COPPER 19 mm	0.2 m	Long: 7.0 m E of EL ANDREWS Short: 1.8 m W of EL HOUSE	Long: of Short: 0.3 m E of SC	CONN TO W/MAIN 08/92
525 REDWOOD AV NOT IN USE	COPPER 19 mm	0.6 m	Long: 9.8 m E of EL ANDREWS Short: 0.5 m E of EL HOUSE	Long: of Short: 0.5 m W of SC	CONN TO W/MAIN 08/92
287 ANDREWS ST RESIDENTIAL	COPPER 19 mm		Long: 38.1 m S of SL REDWOOD Short: 2.6 m N of SL HOUSE	Long: of Short: OPP of SC	CONN TO WM 12/01
283 ANDREWS ST RESIDENTIAL	COPPER 19 mm	0.6 m	Long: 33.5 m N of NL ABERDEEN Short: 2.7 m S of NL HOUSE	Long: of Short: OPP of SC	
279 ANDREWS ST RESIDENTIAL	COPPER 19 mm	0.3 m	Long: 10.4 m N of NL ABERDEEN Short: 7.9 m S of NL HOUSE	Long: of Short: 0.5 m of SC	SERV WITH 275 ABERDEEN
275 ANDREWS ST RESIDENTIAL	COPPER 19 mm	0.3 m	Long: 10.4 m N of NL ABERDEEN Short: 7.5 m N of SL HOUSE	Long: of Short: OPP of SC	CROSSED W/279 ABERDEEN



APEGM
Certificate of Authorization
Earth Tech Canada Inc.
No. 730 Expiry: April 30, 2004

150 mm W.M.	WATERMAIN	150 mm W.M.	HYDRO	150 mm W.M.	WATERMAIN
⊕	HYDRANT	⊕	TELEPHONE	⊕	HYDRANT
⊙	VALVE	⊙	CONCRETE	⊙	VALVE
300mm L.O.S.	LAND DRAINAGE SEWER	300mm L.O.S.	ASPHALT	300mm L.O.S.	LAND DRAINAGE SEWER
250mm W.W.S.	WASTEWATER SEWER	250mm W.W.S.	PROPERTY LINE	250mm W.W.S.	WASTE WATER SEWER
○	MANHOLE	○	SURVEY BAR	○	○
□	CATCH BASIN	□	CURB STOP	⤴	○
▽	CURB INLET	▽	TREE	⊕	○
+	JUNCTIONS	+	ANODE	⊕	○
—	CULVERT	—	CONCRETE SIDEWALK	—	○
—	GAS	—	FENCE	—	○

LOCATION APPROVED UNDERGROUND STRUCTURES

SUPV. U/G STRUCTURES DATE COMMITTEE

NOTE:
LOCATION OF UNDERGROUND STRUCTURES AS SHOWN ARE BASED ON THE BEST INFORMATION AVAILABLE, BUT NO GUARANTEE IS GIVEN THAT THE GIVEN LOCATIONS ARE EXACT. CONFIRMATION OF EXISTENCE AND EXACT LOCATION OF ALL SERVICES MUST BE OBTAINED FROM THE INDIVIDUAL UTILITIES BEFORE PROCEEDING WITH CONSTRUCTION.

B.M. 26-027 E. SIDE MCGREGOR ST. S. OF MOUNTAIN AVE., TBLT. ELEV. 231.813
N.W. CONC. FOUNDATION OF Y.M.C.A. BLDG. 1m S. & 0.8m BELOW BRICK OF MOST N.W. COR. OF BLDG.

NO.	ISSUED FOR TENDER	DATE	BY
0	2004/4/27	GSK	

EARTH TECH
A **tyco** INTERNATIONAL LTD. COMPANY
Earth Tech (Canada) Inc. Winnipeg, Manitoba 204.477.5981

DESIGNED BY GSK	CHECKED BY GSK
DRAWN BY GDL	APPROVED BY K.R. ZUREK

HOR. SCALE: 1:250
VERTICAL SCALE: 1:50

RELEASED FOR CONSTRUCTION BY:
K.R. ZUREK
DATE: **APRIL 27, 2004**

ENGINEER'S SEAL

ORIGINAL SIGNED BY
J. E. HUTCHISON
2004/04/27

CONSULTANT DRAWING NO.
76531-C12

THE CITY OF WINNIPEG
Winnipeg WATER AND WASTE DEPARTMENT

WATERMAIN RENEWALS
CONTRACT No. 5

ANDREWS STREET
ABERDEEN AVENUE TO REDWOOD AVENUE

SHEET OF
12 OF **19**

CITY DRAWING NUMBER
D-8537