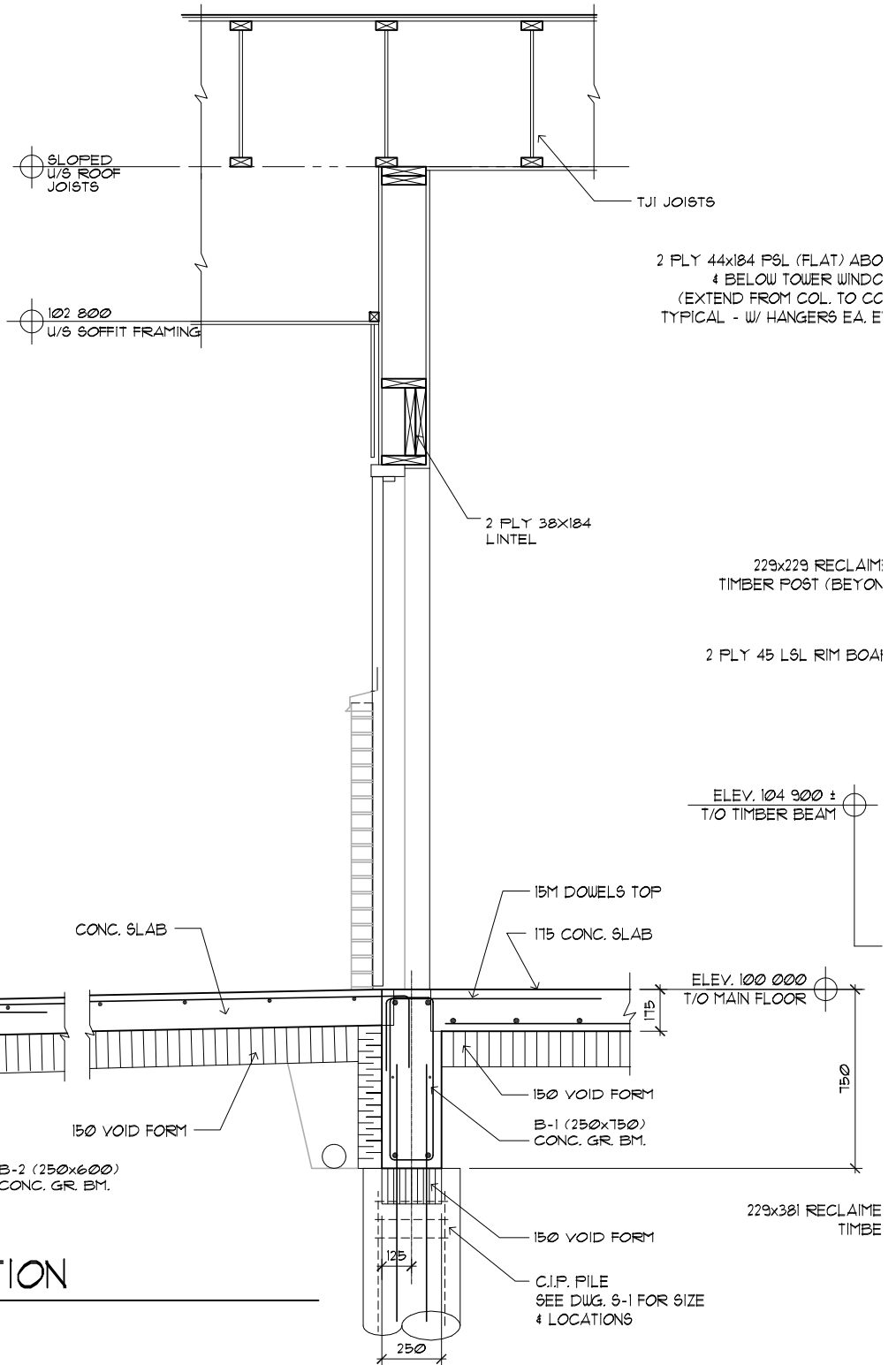


- 5 PLY 38x184 JOIST HANGER TOP & BOTTOM
- 50x5x400 STEEL STRAP EA. SIDE OF POST C/W (2)-10mm# X 75 LG. LAG SCREWS @ 100 O/C
- 16mm PLYWD SHEATHING
- 100 CONC. SLAB
- TJI FLOOR JOISTS
- 3 PLY 38x89 POST
- 3 PLY 38x89 JOIST HANGER TOP & BOTTOM
- 45x406 RIM BOARD - TYPICAL



1 SECTION
SK-2 N.T.S.

PROJECT **RED RIVER CC**

Date: 05/03/05	File No. 03050-55
Designed By: DP	Drawn By: CML

Kowalchuk
Consulting Engineers Ltd.

400 - 70 Arthur Street
Winnipeg, MB R3B 1G7
Phone: (204) 989-0050
Fax: (204) 942-1924
E-mail: kce@kce.ca

SHEET NO.
SK-2