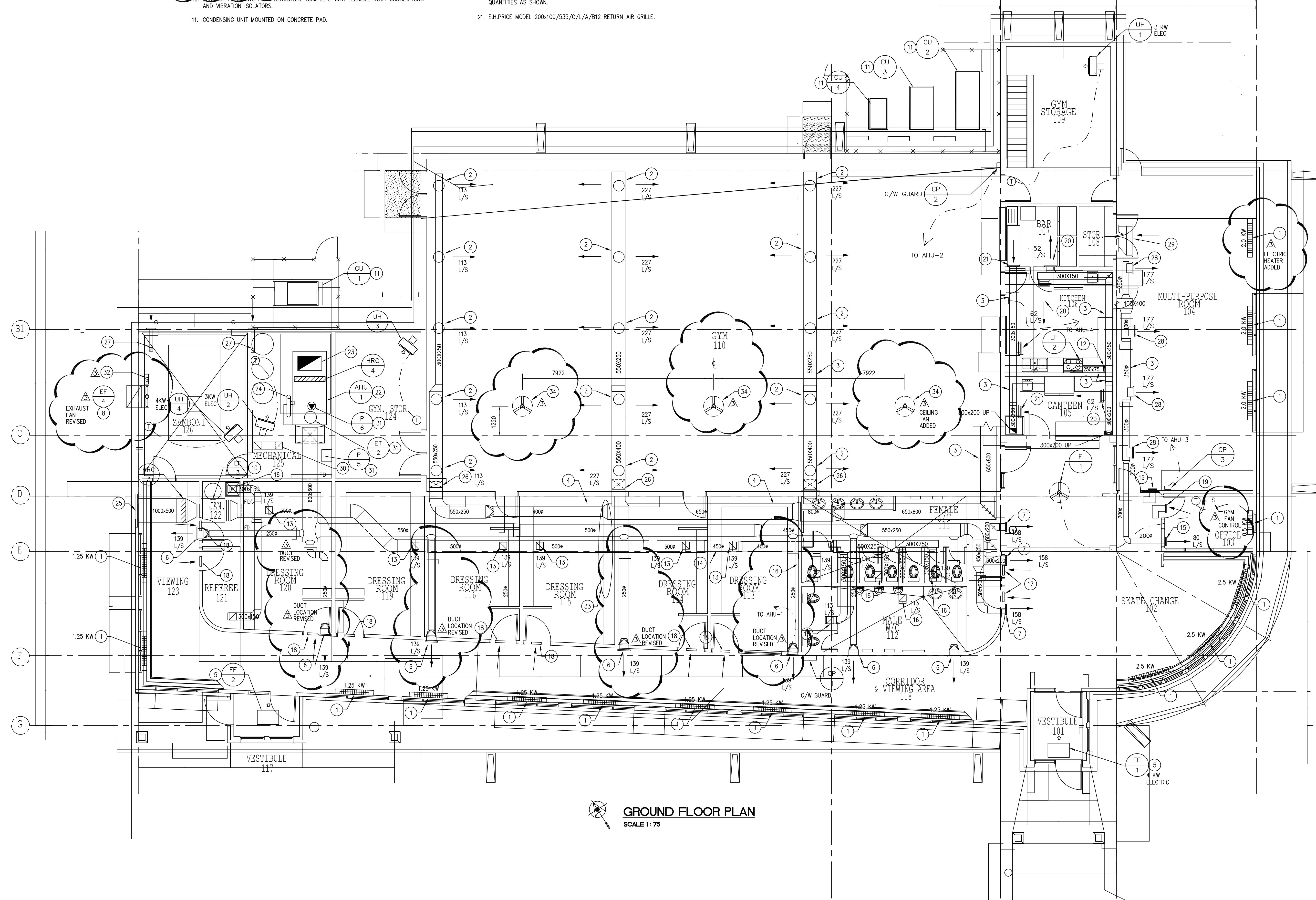
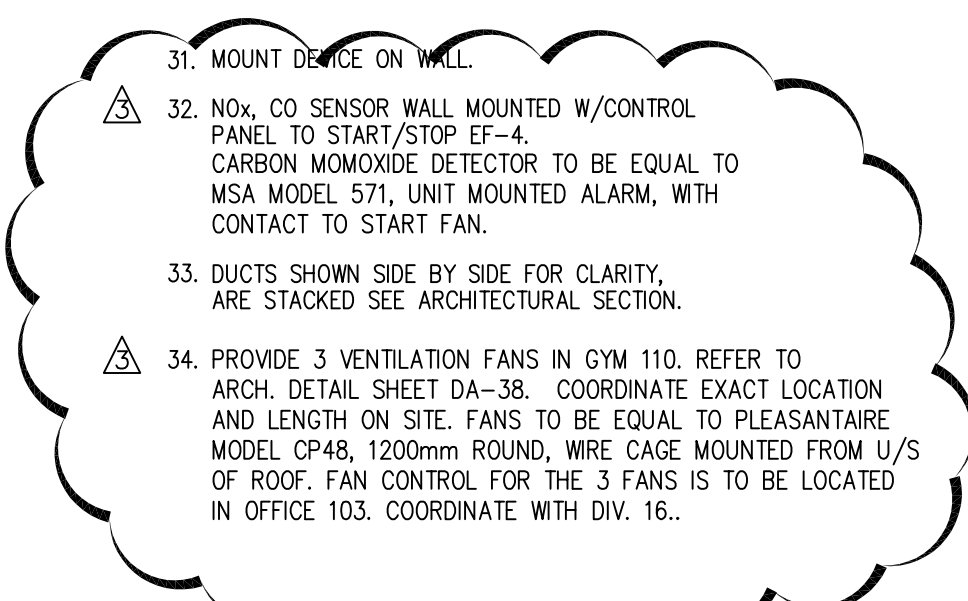
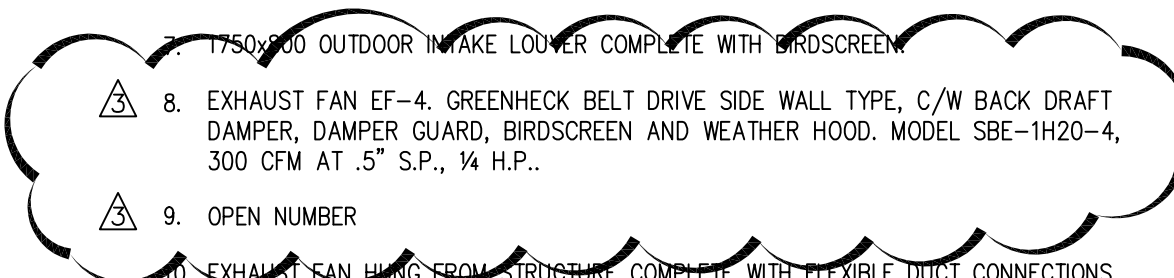


**DRAWING NOTES: ##**

1. ELECTRIC BASEBOARD HEATER REFER TO ELECTRICAL PLANS.
2. E.H.PRICE MODEL RDA/B12 SUPPLY AIR DIFFUSER. SIZE 10 OR 12 BASED ON CAPACITY. BALANCE TO AIR QUANTITIES AS SHOWN.
3. RUN DUCT IN BULKHEAD. REFER TO ARCHITECTURAL DETAILS.
4. RUN DUCT EXPOSED TIGHT TO UNDERSIDE OF ROOF STRUCTURE.
5. ELECTRIC ENTRANCE HEATER REFER TO ELECTRICAL PLANS.
6. E.H.PRICE MODEL 400x150/900/L/A/B12 SUPPLY AIR REGISTER. BALANCE TO AIR QUANTITIES AS SHOWN.
7. 1750x600 OUTDOOR INTAKE LOUVER COMPLETE WITH BIRDSCREEN.
8. EXHAUST FAN EF-4. GREENHECK BELT DRIVE SIDE WALL TYPE, C/W BACK DRAFT DAMPER, DAMPER GUARD, BIRDSCREEN AND WEATHER HOOD. MODEL SBE-1H20-4, 300 CFM AT .5" S.P., 1/4 H.P..
9. OPEN NUMBER
10. EXHAUST FAN HANG FROM STRUCTURE COMPLETE WITH FLEXIBLE DUCT CONNECTIONS AND VIBRATION ISOLATORS.
11. CONDENSING UNIT MOUNTED ON CONCRETE PAD.
12. 250x75 EXHAUST DUCT UP TO MECHANICAL MEZZANINE.
13. E.H.PRICE MODEL 250x200/900/L/A/B12 EXHAUST AIR GRILLE MOUNTED ON UNDERSIDE OF DUCT.
14. EXHAUST DUCT SHOWN IN THIS LOCATION FOR CLARITY ONLY MOUNT DUCT TIGHT TO UNDERSIDE OF GYM SUPPLY AIR DUCT ON NORTH WALL.
15. E.H.PRICE MODEL 250x100/5200/C/L/A/B12 SUPPLY AIR REGISTER. BALANCE TO AIR QUANTITIES SHOWN.
16. E.H.PRICE MODEL 250x250/900/L/A/B12 EXHAUST AIR GRILLE. BALANCE TO AIR QUANTITIES AS SHOWN.
17. E.H.PRICE MODEL 600x500/STG1/BF/B15 STEEL DOOR TRANSFER GRILLE.
18. E.H.PRICE MODEL 600x400/STG1/BF/B15 STEEL DOOR TRANSFER GRILLE.
19. E.H.PRICE MODEL 250x100/535/C/L/A/B12 RETURN AIR GRILLE WITH 250x100 TRANSFER AIR SOUND ELBOW.
20. E.H.PRICE MODEL 200x100/5200/C/S/A/B12 SUPPLY AIR REGISTER. BALANCE TO AIR QUANTITIES AS SHOWN.
21. E.H.PRICE MODEL 200x100/535/C/L/A/B12 RETURN AIR GRILLE.
22. AIR UNIT MOUNTED ON FLOOR
23. 1000x600 OUTSIDE AIR INTAKE GOOSENECK COMPLETE WITH BIRDSCREEN.
24. 150# GAS VENT UP THROUGH ROOF TO 900 ABOVE ROOF COMPLETE WITH RAIN CAP. COORDINATE W/ ARCHITECTURAL.
25. 1000x500 EXHAUST AIR LOUVER C/W BIRDSCREEN.
26. RUN DUCT IN JOIST SPACE. REFER TO ARCHITECTURAL FOR DETAILS.
27. 150x150 INSULATED VENTILATION AIR, COMPLETE WITH DUCT TURNED UP AT HIGH LEVEL, LOUVER ON EXTERIOR WALL.
28. E.H.PRICE MODEL 450x150/5200/C/S/A/B12 SUPPLY AIR REGISTER. BALANCE TO AIR QUANTITIES AS SHOWN.
29. E.H.PRICE MODEL 1200x200/95/C/L/A/B12 RETURN AIR GRILLE.
30. 300x300 INSULATED COMBUSTION AIR GOOSENECK HOOD COMPLETE WITH BIRDSCREEN. DUCT DOWN TO FLOOR AND PROVIDE ESKIMO TRAP.
31. MOUNT DEVICE ON WALL.
32. NOX. CO SENSOR WALL MOUNTED W/CONTROL PANEL TO START/STOP EF-4. CARBON MONOXIDE DETECTOR TO BE EQUAL TO MSA MODEL 571, UNIT MOUNTED ALARM, WITH CONTACT TO START FAN.
33. DUCTS SHOWN SIDE BY SIDE FOR CLARITY, ARE STACKED SEE ARCHITECTURAL SECTION.
34. PROVIDE 3 VENTILATION FANS IN GYM 110. REFER TO ARCH. DETAIL SHEET DA-38. COORDINATE EXACT LOCATION AND LENGTH ON SITE. FANS TO BE EQUAL TO PLEASANTIAIRE MODEL CP48, 1200mm ROUND, WIRE CAGE MOUNTED FROM U/S OF ROOF. FAN CONTROL FOR THE 3 FANS IS TO BE LOCATED IN OFFICE 103. COORDINATE WITH DIV. 16.



**GROUND FLOOR PLAN**  
SCALE 1:75

REVISIONS		
NO.	DATE	PARTICULARS
1	05-03-23	EXPANDED TENDER
3	05-05-10	ADDENDUM ITEMS

NOTES

**APEGN**  
Certificate of Authorization  
SMS Engineering Ltd.  
No. 166 Expiry: April 30, 2004

**SMS ENGINEERING**  
SMS Engineering Ltd. Consulting Engineers  
770 Bradford Street Winnipeg MB Canada R3M 0N3  
Telephone: 204.775.0291 Fax: 204.772.2153  
sms@smseng.com

03-514-01

PROFESSIONAL SEALS

ORIGINAL CONTRACT DRAWING  
SIGNED AND SEALED BY  
V. S. WALKES P. ENG.  
MARCH 23, 2005

THIS DRAWING MUST NOT BE SCALED.  
THE CONTRACTOR SHALL VERIFY ALL DIMENSIONS AND OFFER QUANTITIES FOR ALL WORK. ALL DISCREPANCIES, OMISSIONS AND ERRORS ARE TO BE REPORTED TO THE ARCHITECT.  
DRAWING AND SPECIFICATIONS AS INSTRUMENTS OF SERVICE. THE ARCHITECT ASSUMES RESPONSIBILITY FOR THE ACCURACY OF THE INFORMATION AND DATA PROVIDED. THE ARCHITECT'S LIABILITY IS LIMITED TO THE DESIGN AND SPECIFICATIONS PROVIDED. THE ARCHITECT'S LIABILITY IS LIMITED TO THE DESIGN AND SPECIFICATIONS PROVIDED. THE ARCHITECT'S LIABILITY IS LIMITED TO THE DESIGN AND SPECIFICATIONS PROVIDED.

200 -141 Bannatyne Avenue, Winnipeg, Manitoba R3B 0R3  
Telephone - 204.936.0938 Facsimile - 204.943.5597

PROJECT TITLE  
**RED RIVER COMMUNITY CENTRE REDEVELOPMENT**

LOCATION  
WINNIPEG, MB  
293 MURRAY AVENUE

CLIENT  
THE CITY OF WINNIPEG

DRAWING TITLE  
**Ground Floor Plan  
HVAC**

DRAWN GM	APPROVED VSW	DRAWING M2-1
SCALE 1:75	DATE ISSUED 05-03-23	
JOB NUMBER 03-514-01	DATE PLOTTED 05-03-23	REVISION R-3