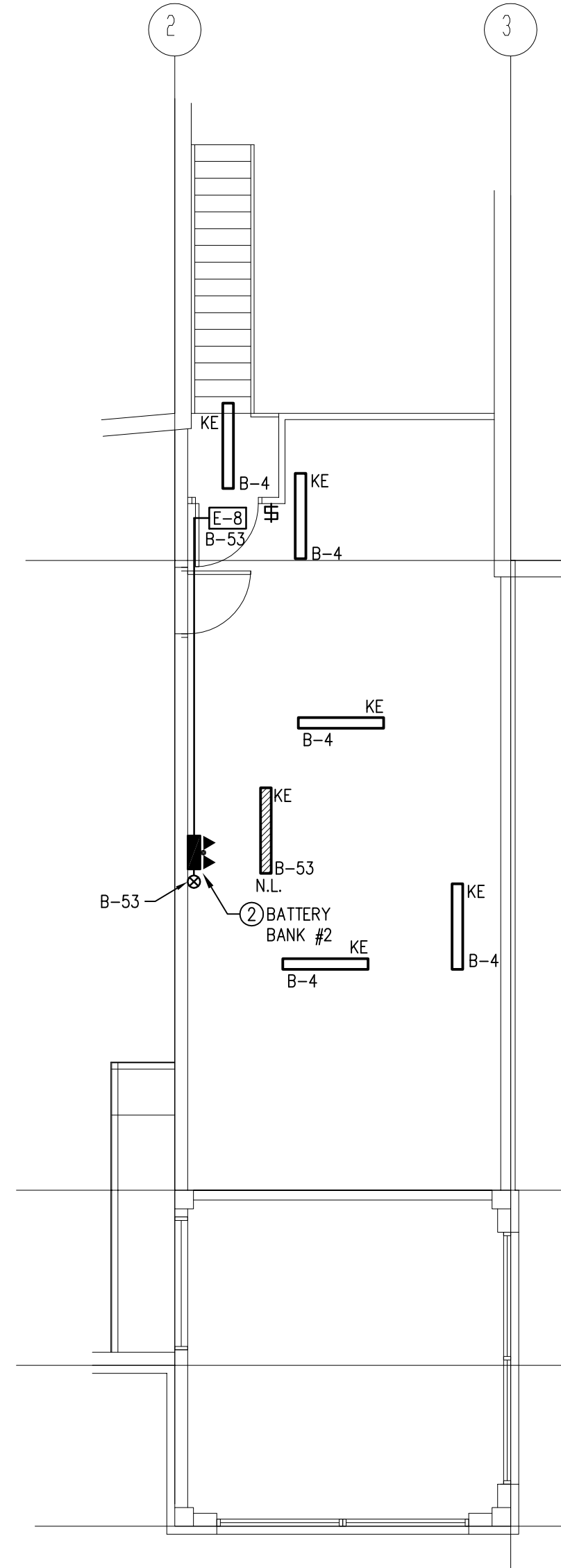
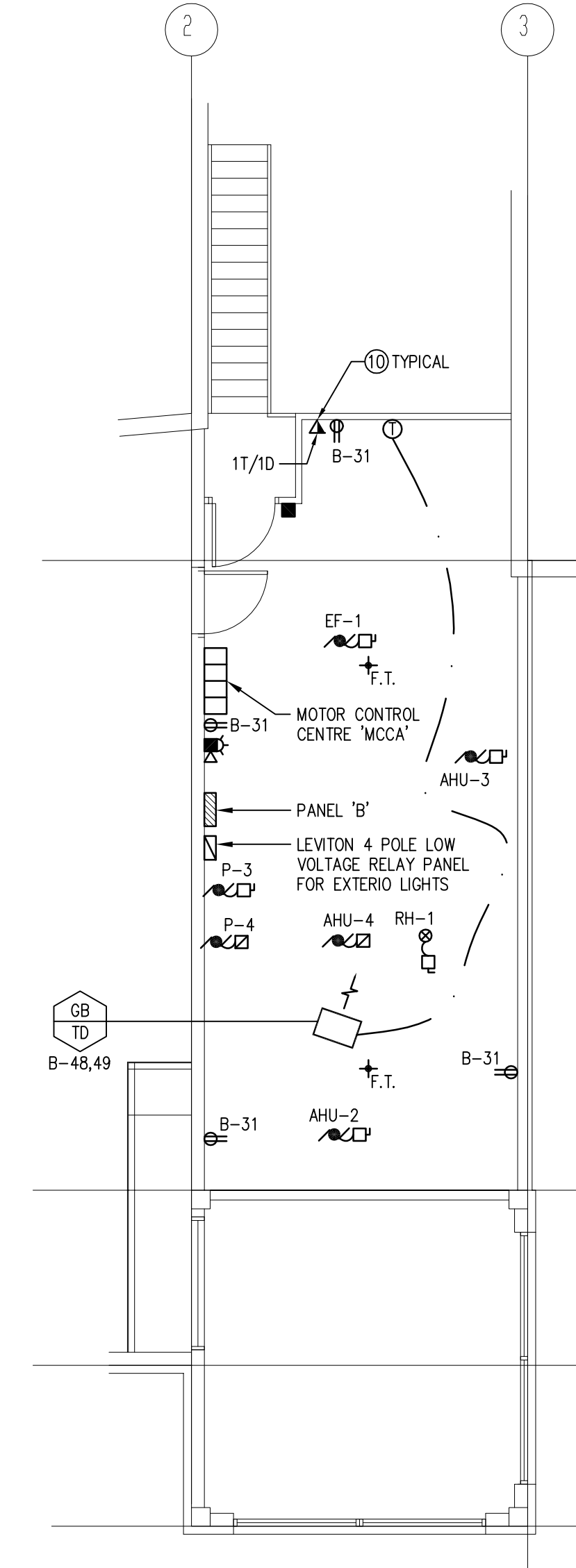


MAIN DISTRIBUTION SCHEMATIC



MEZZANINE FLOOR PLAN - LIGHTING
SCALE 1:75



MEZZANINE FLOOR PLAN - POWER AND SYSTEMS
SCALE 1:75

| REVISIONS | | |
|-----------|----------|-----------------|
| NO. | DATE | PARTICULARS |
| 1 | 05-03-23 | EXPANDED TENDER |
| | | |
| | | |
| | | |
| | | |

NOTES

SMS ENGINEERING
 SMS Engineering Ltd. Consulting Engineers
 770 Bratford Street Winnipeg MB Canada R3H 0N3
 Telephone: 204.775.0291 Fax: 204.772.2153
 sms@smseng.com
 03-514-01

PROFESSIONAL SEALS

APEGM
 Certificate of Authorization
 SMS Engineering Ltd.
 No. 166 Expiry: April 30, 2004

ORIGINAL DRAWING
 SIGNED AND SEALED BY
 B. D. LESKO, P. ENG.
 MARCH 23, 2005

THIS DRAWING MUST NOT BE SCALED.
 THE CONTRACTOR SHALL VERIFY ALL DIMENSIONS AND OFFER BACK TO SITE BEFORE COMMENCEMENT OF WORK. ALL DISCREPANCIES, ERRORS, AND OMISSIONS ARE TO BE REPORTED TO THE ARCHITECT.
 DRAWING AND SPECIFICATIONS, AS INSTRUMENTS OF SERVICE, ARE THE PROPERTY OF THE ENGINEER. THE COPYRIGHT IN THE SAME BEING RESERVED TO HIM.
 NO REPRODUCTION MAY BE MADE WITHOUT THE PERMISSION OF THE ARCHITECT AND WHEN MADE, MUST BE FOR HIS USE. ALL RIGHTS TO BE RETURNED TO THE ARCHITECT ON REQUEST.

200 -141 Bannatyne Avenue, Winnipeg, Manitoba R3B 0R3
 Telephone - 204.956.0938 Facsimile - 204.949.5597

PROJECT TITLE
RED RIVER COMMUNITY CENTRE REDEVELOPMENT

LOCATION
 WINNIPEG, MB
 293 MURRAY AVENUE

CLIENT
 THE CITY OF WINNIPEG

DRAWING TITLE
Main Distribution Schematic

| | | |
|-------------------------|--------------------------|-----------------|
| DRAWN CM | APPROVED ALG | DRAWING E3.1 |
| SCALE NTS | DATE ISSUED 05-03-23 | REVISION R-1 |
| JOB NUMBER 03-514-01 | DATE PLOTTED 05-03-23 | REVISION R-1 |