

DRAWING NOTES: (M)

1. ELECTRIC BASEBOARD HEATER REFER TO ELECTRICAL PLANS.
2. E.H.PRICE MODEL RCD/A/B12 SUPPLY AIR DIFFUSER, SIZE 10 OR 12 BASED ON CAPACITY. BALANCE TO AIR QUANTITIES AS SHOWN.
3. RUN DUCT IN BULKHEAD. REFER TO ARCHITECTURAL DETAILS.
4. RUN DUCT EXPOSED TIGHT TO UNDERSIDE OF ROOF STRUCTURE.
5. ELECTRIC ENTRANCE HEATER REFER TO ELECTRICAL PLANS.
6. E.H.PRICE MODEL 400x150/900/L/A/B12 SUPPLY AIR REGISTER. BALANCE TO AIR QUANTITIES AS SHOWN.
7. 1750x800 OUTDOOR INTAKE LOUVER COMPLETE WITH BIRDSCREEN.
8. EF-4 MOUNTED ON ROOF
9. EDG CRATE GRILLE (PRICE 80 300x300)
10. EXHAUST FAN HUNG FROM STRUCTURE COMPLETE WITH FLEXIBLE DUCT CONNECTIONS AND VIBRATION ISOLATORS.
11. CONDENSING UNIT MOUNTED ON CONCRETE PAD.
12. 250x75 EXHAUST DUCT UP TO MECHANICAL MEZZANINE.
13. E.H.PRICE MODEL 250x200/900/L/A/B12 EXHAUST AIR GRILLE MOUNTED ON UNDERSIDE OF DUCT.
14. EXHAUST DUCT SHOWN IN THIS LOCATION FOR CLARITY ONLY MOUNT DUCT TIGHT TO UNDERSIDE OF GYM SUPPLY AIR DUCT ON NORTH WALL.
15. E.H.PRICE MODEL 250x100/5200/C/L/A/B12 SUPPLY AIR REGISTER. BALANCE TO AIR QUANTITIES SHOWN.
16. E.H.PRICE MODEL 250x250/900/L/A/B12 EXHAUST AIR GRILLE. BALANCE TO AIR QUANTITIES AS SHOWN.
17. E.H.PRICE MODEL 600x500/STGI/BF/B15 STEEL DOOR TRANSFER GRILLE.
18. E.H.PRICE MODEL 600x400/STGI/BF/B15 STEEL DOOR TRANSFER GRILLE.
19. E.H.PRICE MODEL 250x100/535/C/L/A/B12 RETURN AIR GRILLE WITH 250x100 TRANSFER AIR SOUND ELBOW.
20. E.H.PRICE MODEL 200x100/5200/C/S/A/B12 SUPPLY AIR REGISTER. BALANCE TO AIR QUANTITIES AS SHOWN.
21. E.H.PRICE MODEL 200x100/535/C/L/A/B12 RETURN AIR GRILLE.
22. AIR UNIT MOUNTED ON FLOOR
23. 1000x600 OUTSIDE AIR INTAKE GOOSENECK COMPLETE WITH BIRDSCREEN.
24. 150# GAS VENT UP THROUGH ROOF TO 900 ABOVE ROOF COMPLETE WITH RAIN CAP. COORDINATE W/ ARCHITECTURAL.
25. 1000x500 EXHAUST AIR LOUVER C/W BIRDSCREEN.
26. RUN DUCT IN JOIST SPACE. REFER TO ARCHITECTURAL FOR DETAILS.
27. 150x150 INSULATED VENTILATION AIR, COMPLETE WITH DUCT TURNED UP AT HIGH LEVEL. LOUVER ON EXTERIOR WALL.
28. E.H.PRICE MODEL 450x150/5200/C/S/A/B12 SUPPLY AIR REGISTER. BALANCE TO AIR QUANTITIES AS SHOWN.
29. E.H.PRICE MODEL 1200x200/95/C/L/A/B12 RETURN AIR GRILLE.
30. 300x300 INSULATED COMBUSTION AIR GOOSENECK HOOD COMPLETE WITH BIRDSCREEN. DUCT DOWN TO FLOOR AND PROVIDE ESKIMO TRAP.
31. MOUNT DEVICE ON WALL.
32. NOx CO SENSOR WALL MOUNTED W/CONTROL PANEL. TO START STOP EF-4.
33. DUCTS SHOWN SIDE BY SIDE FOR CLARITY. ARE STACKED SEE ARCHITECTURAL SECTION.

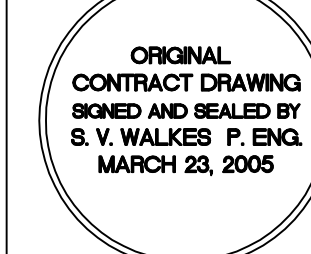
REVISIONS		
NO.	DATE	PARTICULARS
1	05-03-23	EXPANDED TENDER

NOTES



SMS ENGINEERING
 SMS Engineering Ltd. Consulting Engineers
 770 Bannatway Avenue Winnipeg, Manitoba R3B 0B3
 Telephone - 204.956.0938 Fax 204.943.5597
 03-514-01 sms@smseng.com

PROFESSIONAL SEALS



THIS DRAWING MUST NOT BE SCALED.
 THE CONTRACTOR SHALL VERIFY ALL DIMENSIONS AND CHECK DATA ON SITE PRIOR TO COMMENCEMENT OF WORK. OMISSIONS AND ERRORS ARE TO BE REPORTED TO THE ARCHITECT.
 DRAWING AND SPECIFICATIONS, AS INSTRUMENTS OF SERVICE, ARE THE PROPERTY OF SMS ENGINEERING LTD. NO REPRODUCTION MAY BE MADE WITHOUT THE PERMISSION OF THE ARCHITECT AND ANY WORK MUST BE RETURNED TO THE ARCHITECT ON REQUEST.

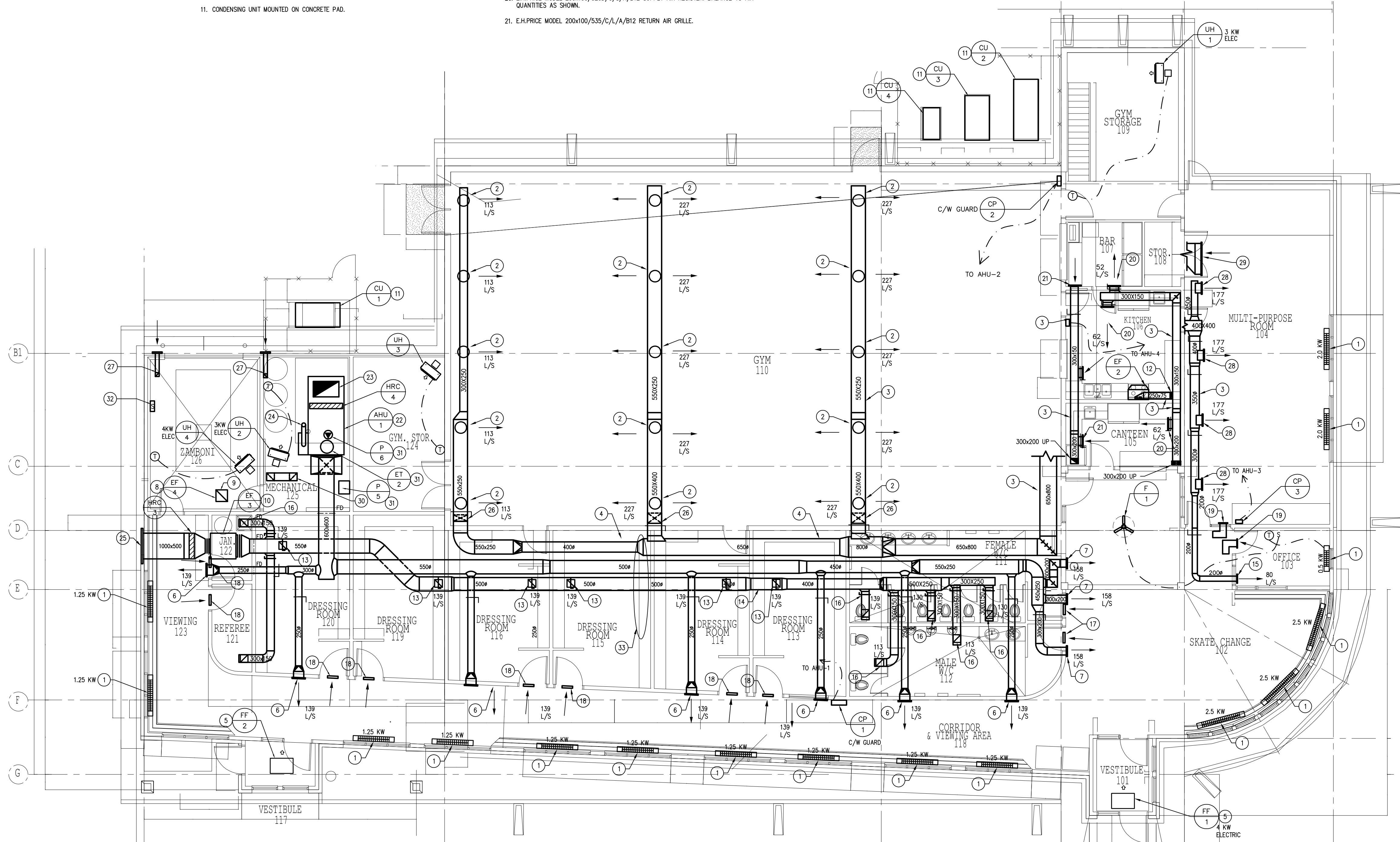
200 -141 Bannatway Avenue, Winnipeg, Manitoba R3B 0B3
 Telephone - 204.956.0938 Facsimile - 204.943.5597

PROJECT TITLE
RED RIVER COMMUNITY CENTRE REDEVELOPMENT

LOCATION
 WINNIPEG, MB
 233 MURRAY AVENUE
 CLIENT
 THE CITY OF WINNIPEG

DRAWING TITLE
Ground Floor Plan HVAC

DRAWN GM	APPROVED VSW	DRAWING M2-1
SCALE 1:75	DATE ISSUED 05-03-23	
JOB NUMBER 03-514-01	DATE PLOTTED 05-03-23	REVISION R-1



GROUND FLOOR PLAN
 SCALE 1:75